

2655 OAKLEY PARK ROAD  
COMMERCE TWP., MICHIGAN

OFFICE FOR SALE OR LEASE

For Sale: 28,403 Square Feet

For Lease: 691 – 7,504 Square Feet



**SIGNATURE  
ASSOCIATES**  
KNOW SIGNATURE | KNOW RESULTS

**COMMERCE CENTER**



## PROPERTY FEATURES

- 691 – 7,504 square foot suites available
- 28,403 total building square footage
- Impeccable office building with modern design and finishes throughout
- High visibility location
- Ample parking
- Wooded area creates a park-like atmosphere
- A must see building!
- Contact broker for sale and lease rate



For more information, please contact:

**JASON STOUGH**

(248) 948 4180

[jstough@signatureassociates.com](mailto:jstough@signatureassociates.com)

**JEFF LEMANSKI**

(248) 359 0641

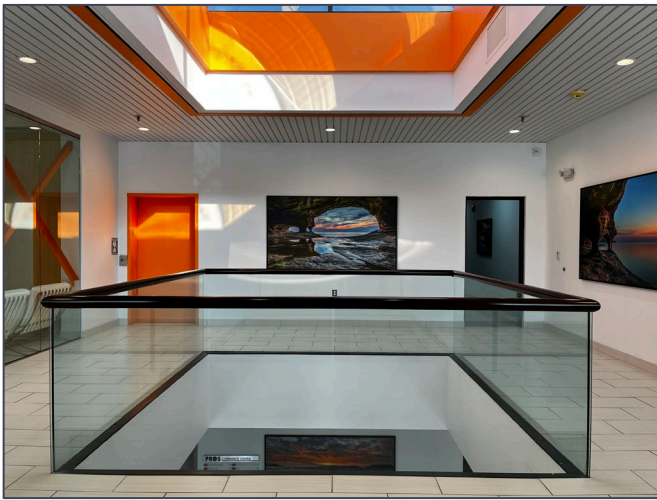
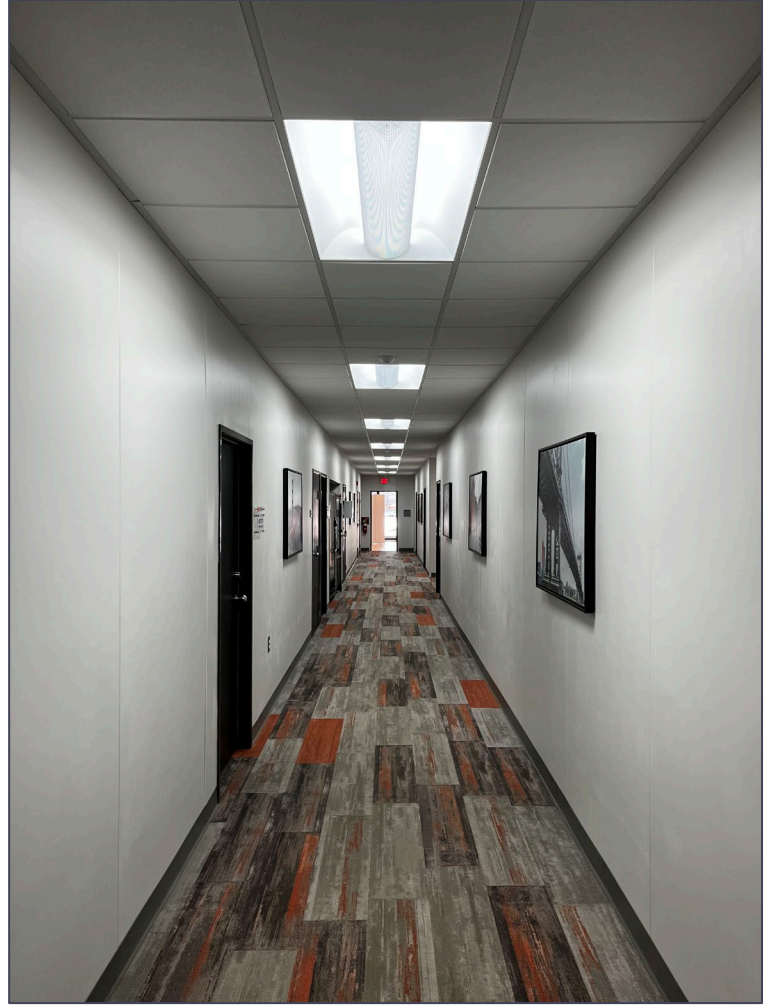
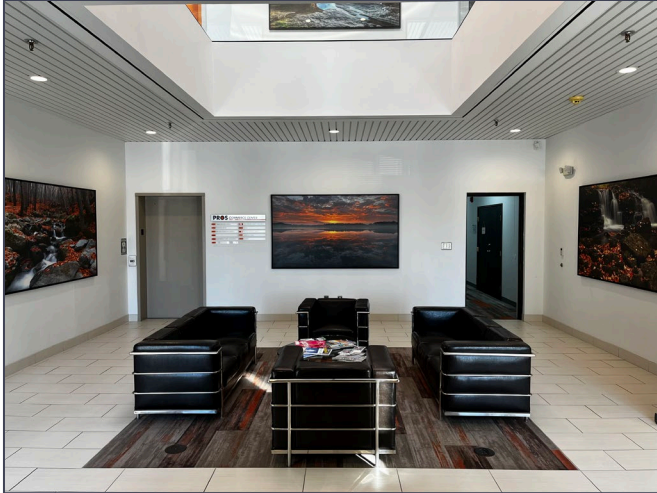
[jlemanski@signatureassociates.com](mailto:jlemanski@signatureassociates.com)

**JOHN BOYD**

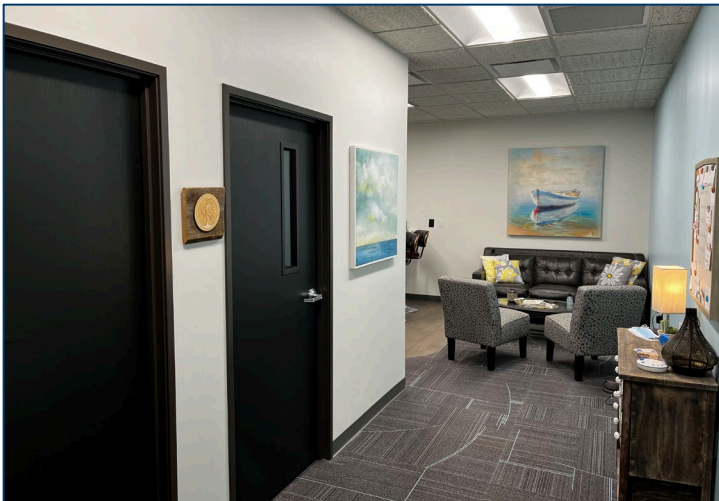
(248) 948 0102

[jboyd@signatureassociates.com](mailto:jboyd@signatureassociates.com)

Common Area Photos



Suite 102 Photos



For more information, please contact:

**JASON STOUGH**  
(248) 948 4180  
jstough@signatureassociates.com

**JEFF LEMANSKI**  
(248) 359 0641  
jlemanski@signatureassociates.com

**JOHN BOYD**  
(248) 948 0102  
jboyd@signatureassociates.com

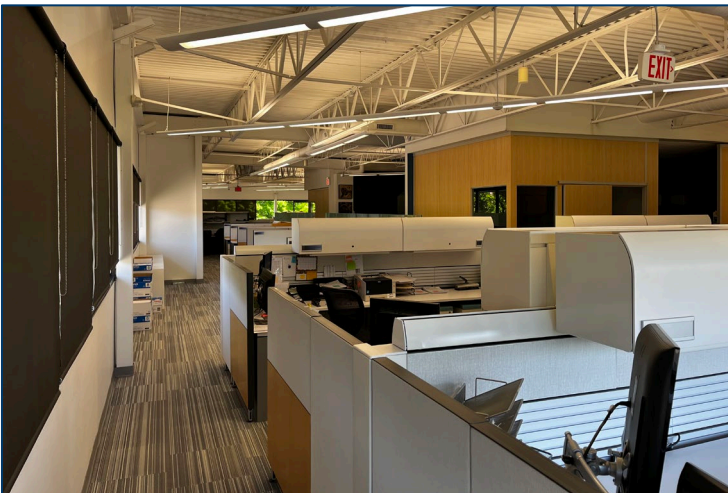
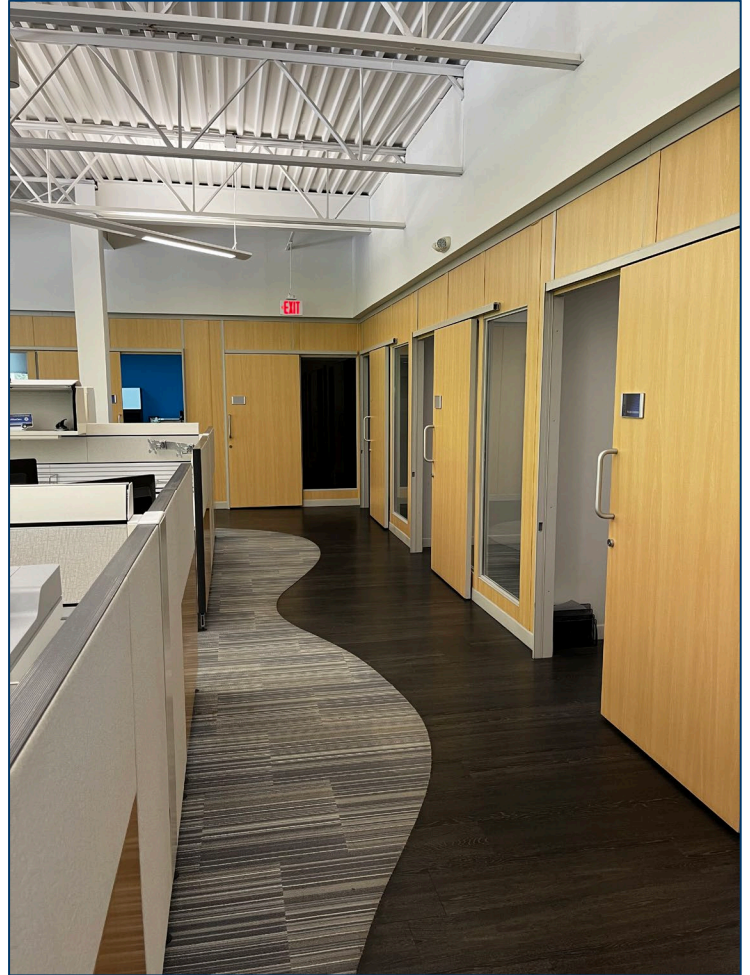
# 2655 Oakley Park Road – Commerce Twp., Michigan

## Office For Sale or Lease

For Lease –  
691 – 7,504 SF

For Sale –  
28,403 SF

### Suite 200 Photos



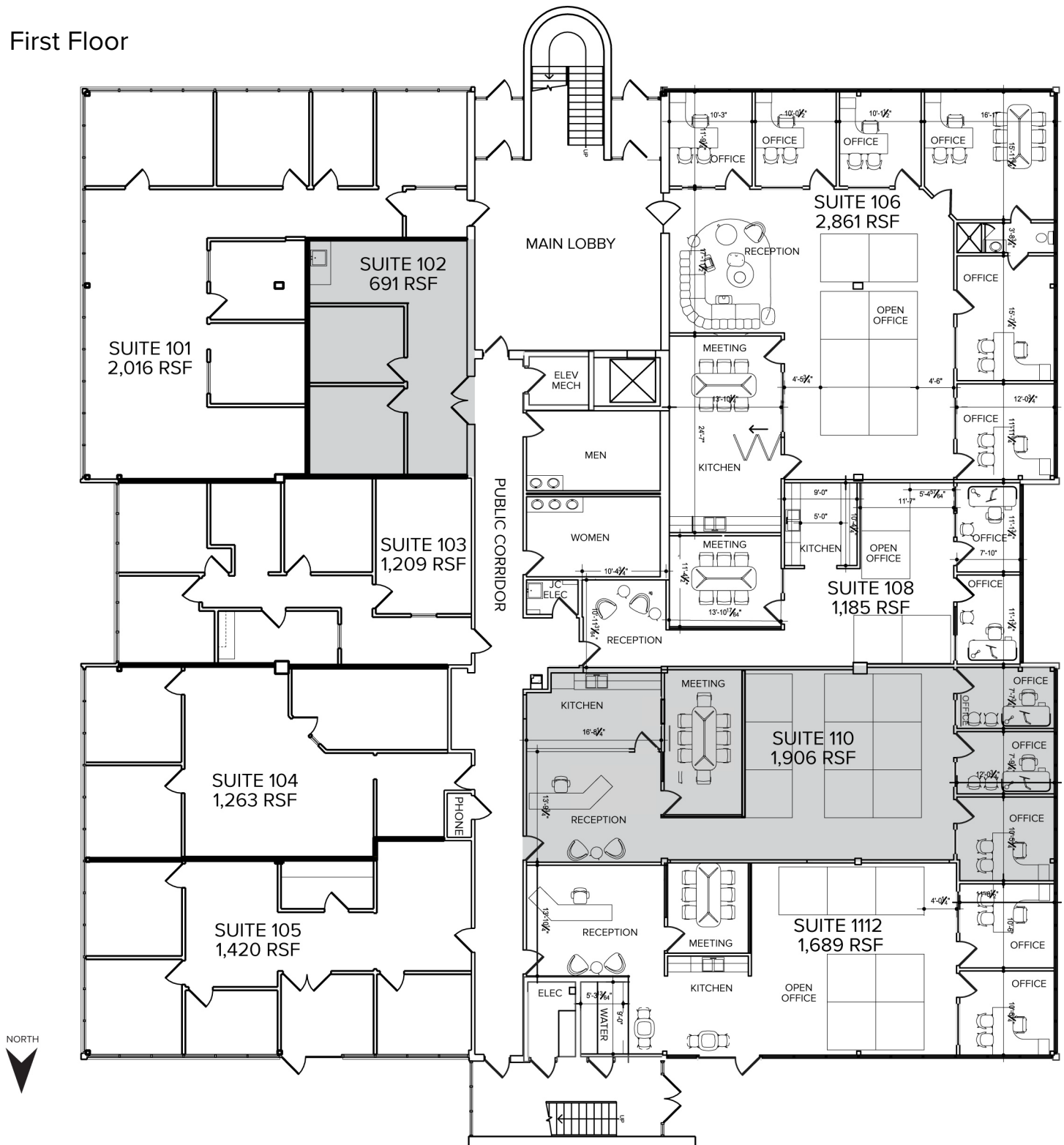
For more information, please contact:

**JASON STOUGH**  
(248) 948 4180  
jstough@signatureassociates.com

**JEFF LEMANSKI**  
(248) 359 0641  
jlemanski@signatureassociates.com

**JOHN BOYD**  
(248) 948 0102  
jboyd@signatureassociates.com

First Floor



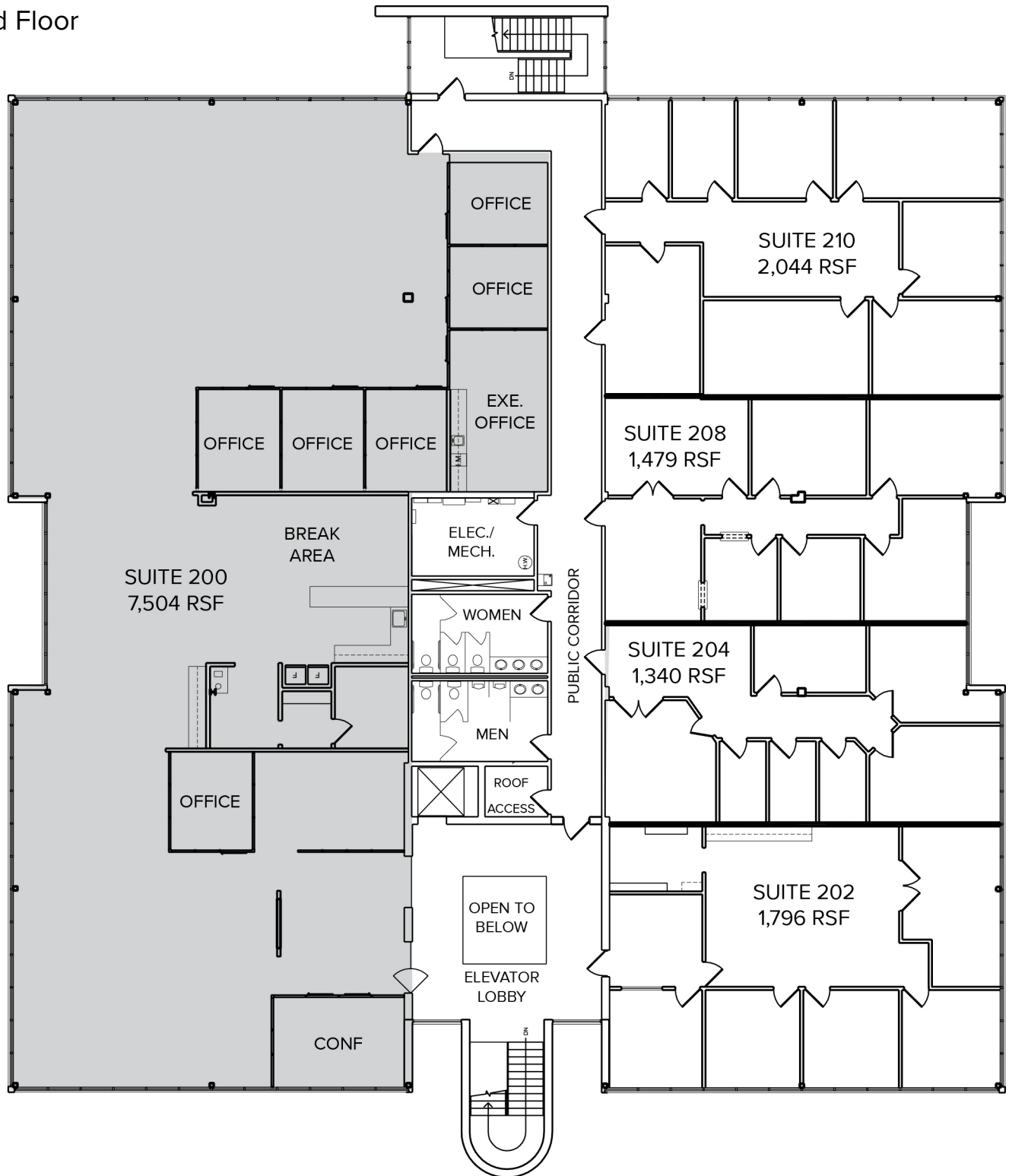
For more information, please contact:

**JASON STOUGH**  
(248) 948 4180  
jstough@signatureassociates.com

**JEFF LEMANSKI**  
(248) 359 0641  
jlemanski@signatureassociates.com

**JOHN BOYD**  
(248) 948 0102  
jboyd@signatureassociates.com

Second Floor



For more information, please contact:

**JASON STOUGH**  
(248) 948 4180  
jstough@signatureassociates.com

**JEFF LEMANSKI**  
(248) 359 0641  
jlemanski@signatureassociates.com

**JOHN BOYD**  
(248) 948 0102  
jboyd@signatureassociates.com