



## 5006 Curtis Ave

5006 Curtis Ave, Curtis Bay, MD 21226

**BERKSHIRE  
HATHAWAY**  
HOMESERVICES

**HOMESALE  
REALTY**



Will Ferguson  
The Ferguson Group  
77 Main St, Annapolis, MD 21401  
[wferguson@homesale.com](mailto:wferguson@homesale.com)  
410-505-9700 Office  
240-731-8935 Cell



Tashia Turner  
1425 Clarkview Rd, Baltimore, MD 21209  
[tturner@homesale.com](mailto:tturner@homesale.com)  
410-583-0400 Office  
240-671-4443 Cell



# 5006 Curtis Ave

\$19.68 /SF/YR

## COMMERCIAL SPACE for lease

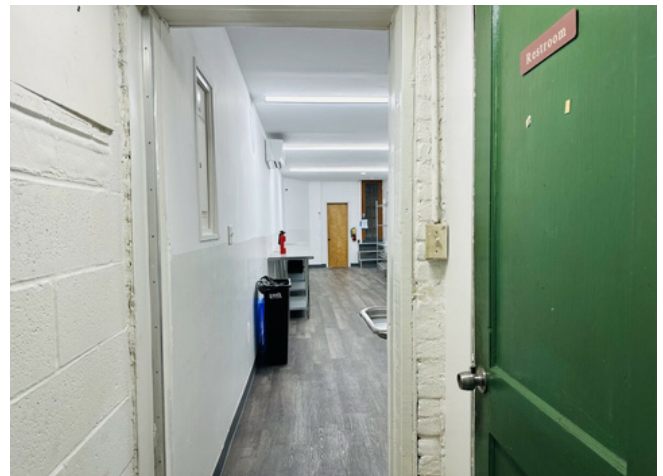
This 700 sq. ft. updated flex space is located in Curtis Bay. Great space for light food processing, food prep, packaging, bottling, art studio, office space, storage and more!

Amenities include Wi-Fi, commercial fridge, stainless steel prep tables and shelving, three compartment sinks, etc. Potential to also build to accommodate your business based on U&O. Currently not set up for cooking on site.

Easy commute to Baltimore City, and AA County and close to all major highways like 97/695/895/295 and Ritchie Hwy. \*Rent includes water and sewer with a cap of \$125/mo. \*\*AVAILABLE NOW\*\*

- Street Parking
- Easy Commute to Baltimore
- Easy Commute to Anne Arundel County
- Compartment Sinks
- Commercial Fridge
- Lots of Light

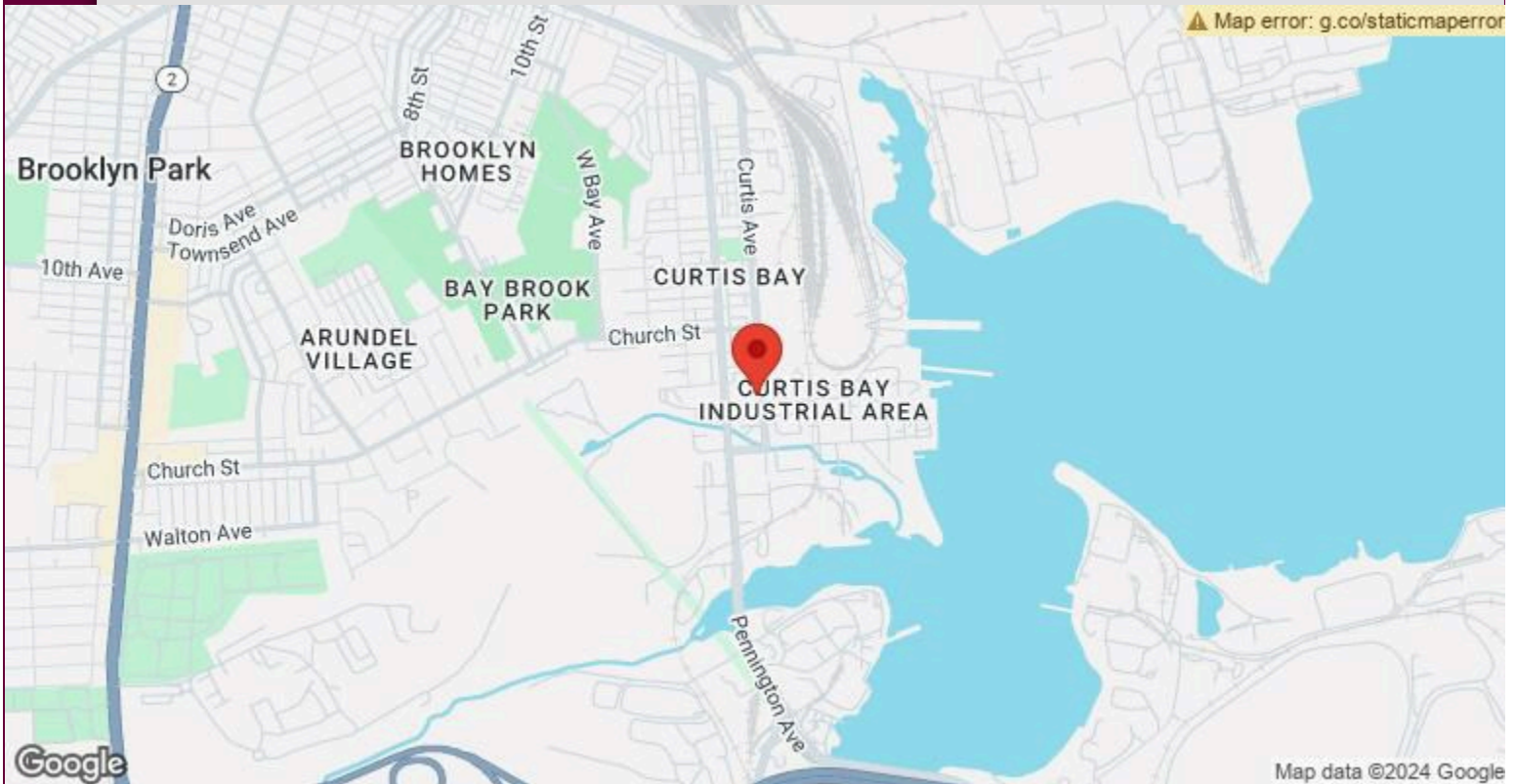
Rental Rate:	\$19.68 /SF/YR
Property Type:	Flex, Retail
Property Subtype:	Storefront Retail/Residential
Gross Leasable Area:	2,235 SF
Year Built:	1900
Walk Score <sup>®</sup> :	48 (Car-Dependent)
Transit Score <sup>®</sup> :	45 (Some Transit)
Rental Rate Mo:	\$1.64 /SF/MO



## 1st Floor Ste 5006

Space Available	700 SF
Rental Rate	\$19.68 /SF/YR
Date Available	Now
Service Type	TBD
Space Type	Relet Retail
Space Use	Flex, Retail
Lease Term	Negotiable

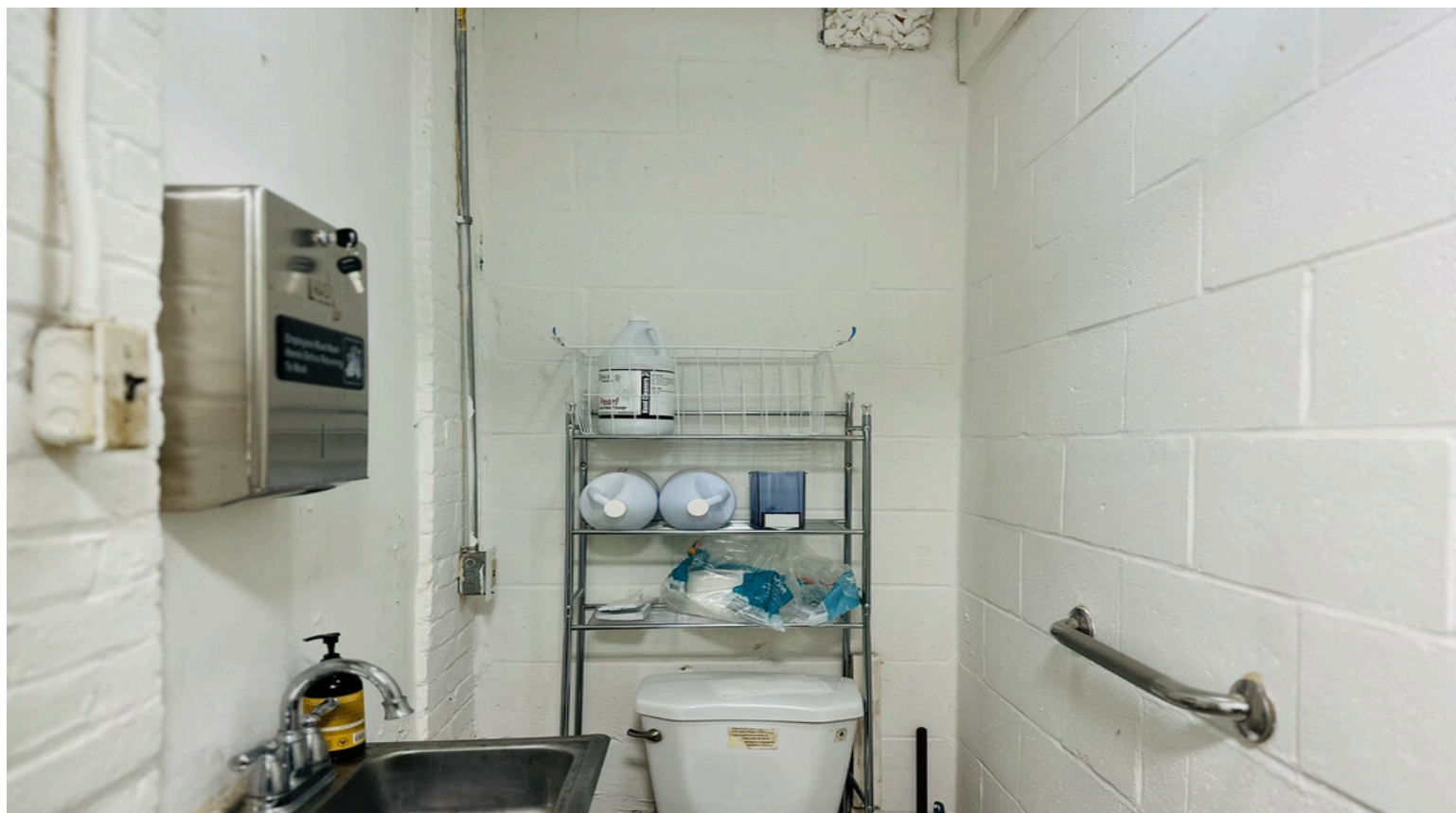
Great space for light food processing, food prep, packaging, bottling, art studio, office space, storage and more! Amenities include Wi-Fi, commercial fridge, stainless steel prep tables and shelving, three compartment sinks, etc. Potential to also build to accommodate your business based on U&O. Currently not set up for cooking on site. Easy commute to Baltimore City, and AA County and close to all major highways like 97/695/895/295 and Ritchie Hwy.



This building is a certified member of the "Made in Baltimore Program", which has been supporting makers and manufacturers in Baltimore City since 2016



# Property Photos

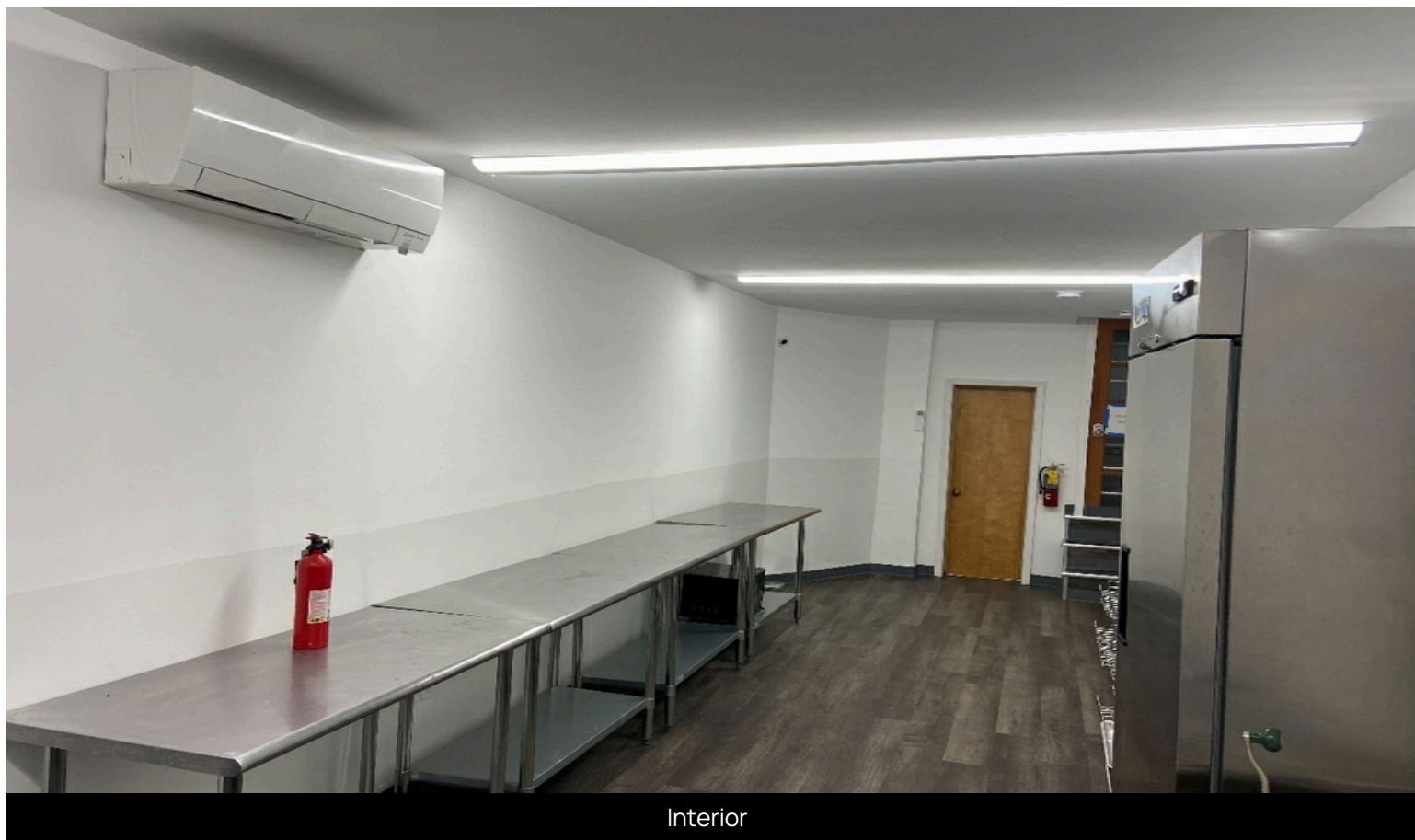


Interior

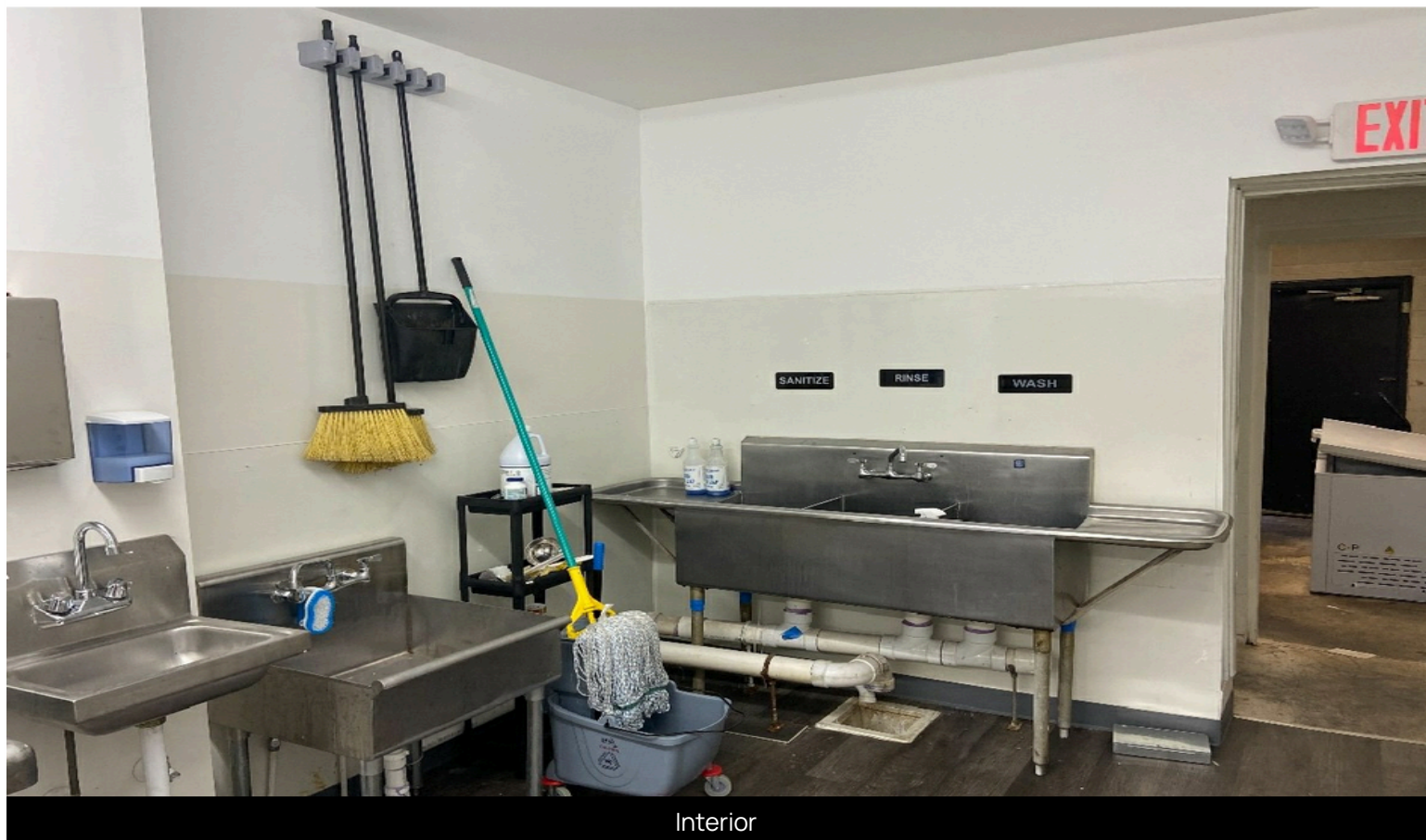


Interior

# Property Photos

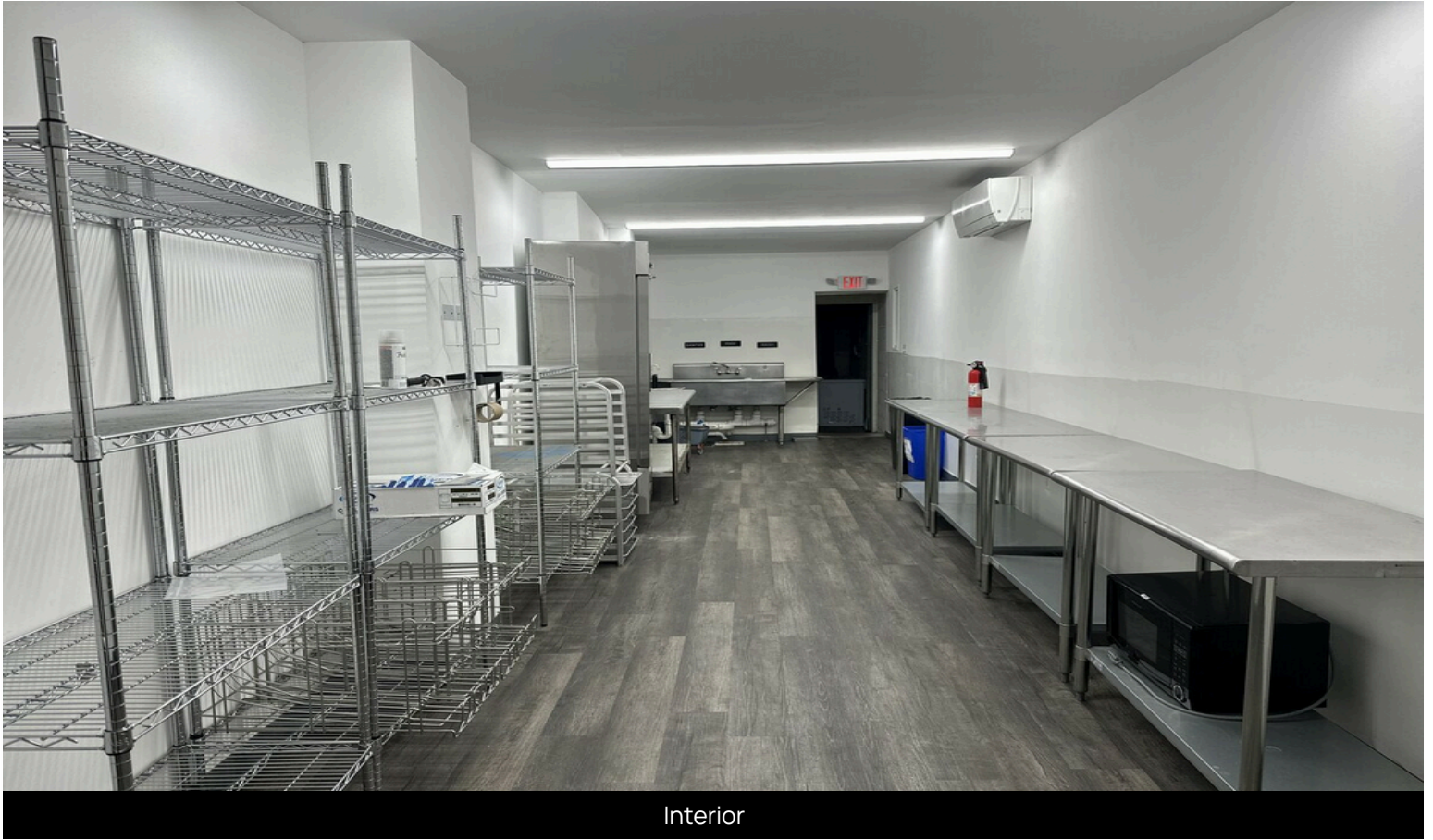


Interior

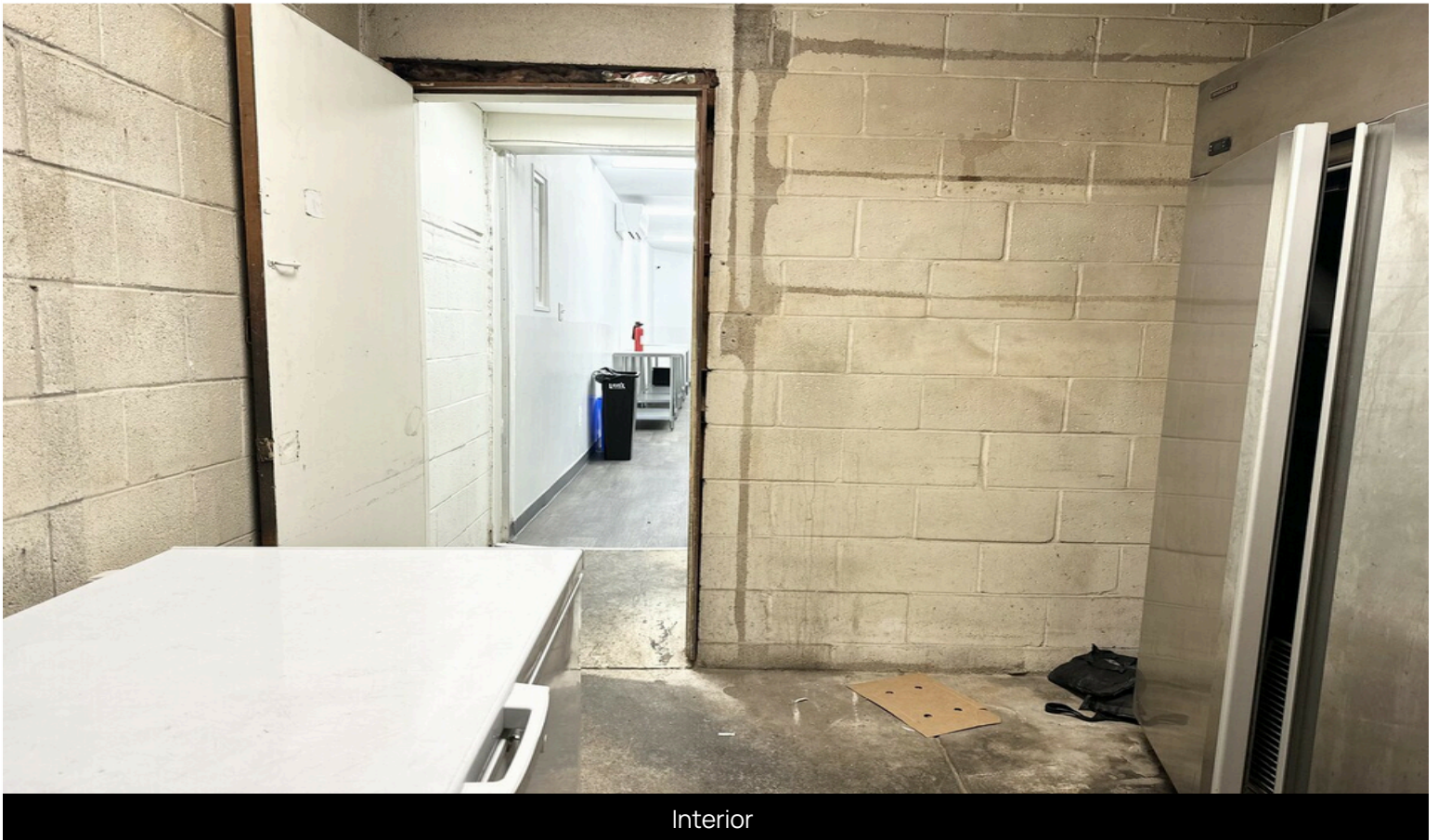


Interior

# Property Photos

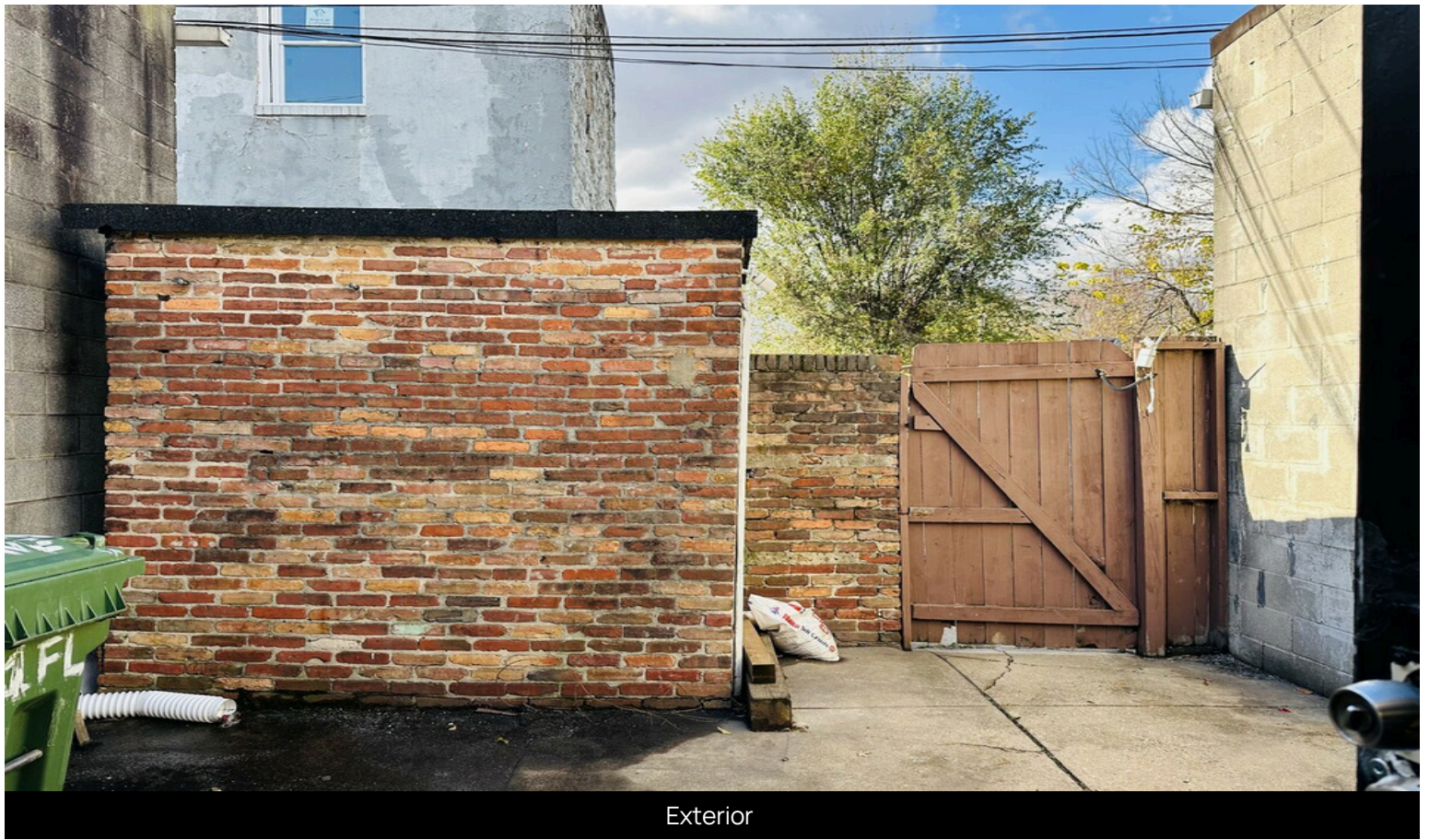


Interior



Interior

# Property Photos



Exterior



Exterior