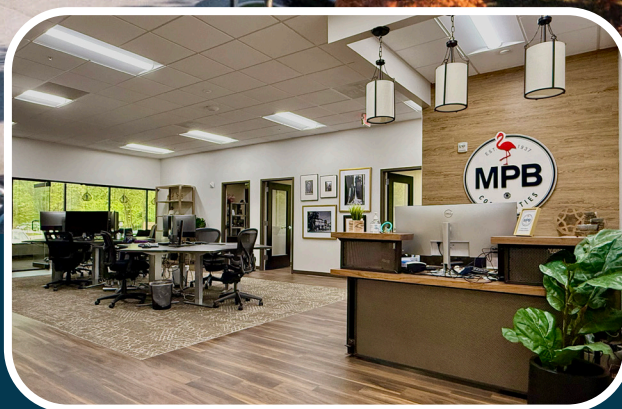


181 **HARRY S. TRUMAN PKWY**

SUITE 175 | ANNAPOLIS, MD

Class A Office Space
Annapolis Corporate Park
FOR SUBLEASE

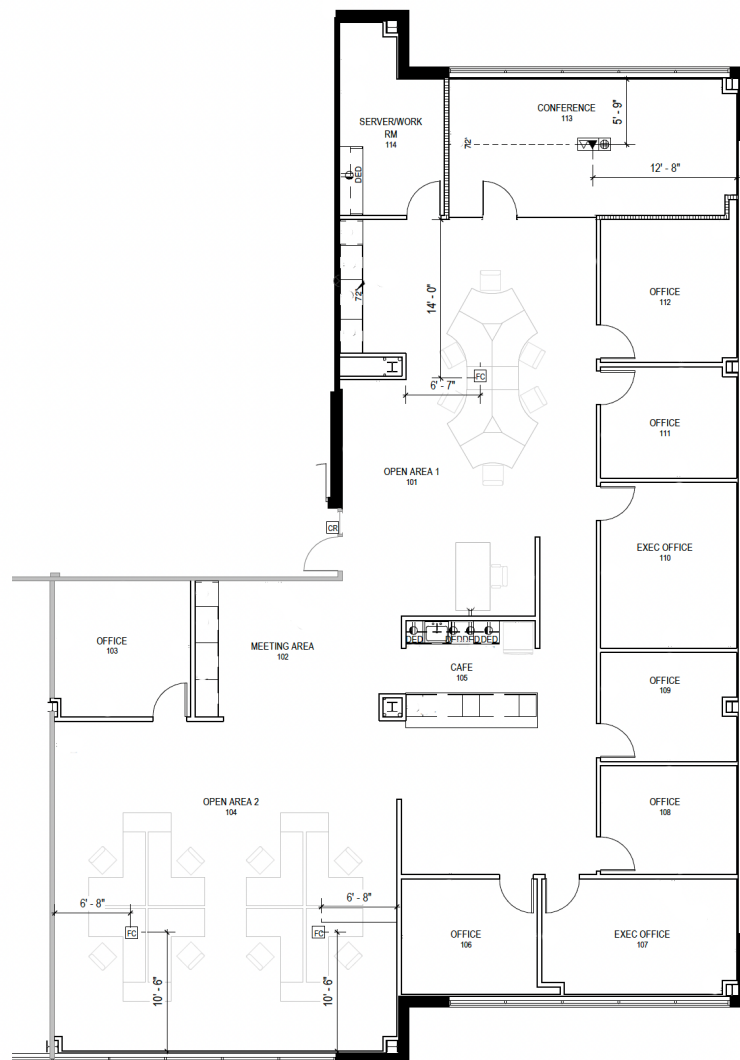


181 HARRY S. TRUMAN PKWY

SUITE 175 | ANNAPOLIS, MD

PROPERTY HIGHLIGHTS:

- 4,593 SF Class A office space
- 5 Years remaining
- Window-lined office space with high-end buildout
- 8 offices, open workstation area, conference room, open kitchenette and meeting area
- Free, unreserved parking
- Contact Brokers for additional information



BUILDING HIGHLIGHTS:

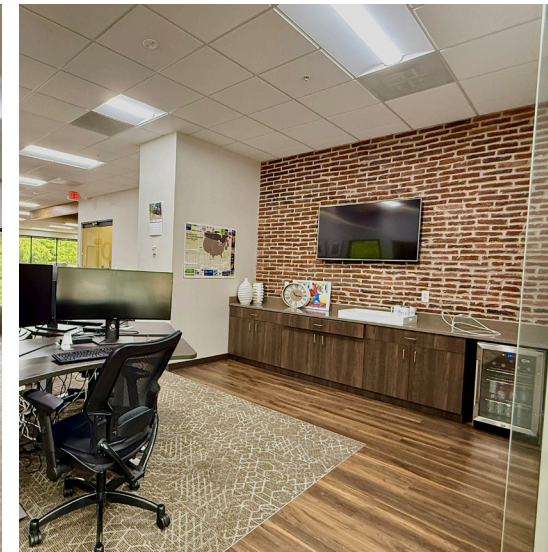
SQUARE FOOTAGE	63,668 SF
LEED	Gold Core & Shell
CEILING HEIGHT	10 ft. Clear Minimum
ELEVATOR	Yes
PARKING	4.5 spaces per 1,000 SF
HVAC	Gas, VAV + zone control
ZONING	C-2



While we have no reason to doubt the accuracy of any of the information supplied, we cannot, and do not, guarantee its accuracy. All information should be independently verified prior to a purchase or lease of the property. We are not responsible for errors, omissions, misuse, or misinterpretation of information contained herein and make no warranty of any kind, express or implied, with respect to the property or any other matters.

MOVING COMMERCIAL REAL ESTATE GOALS **FORWARD.**

Property Overview



Area Overview



181 **HARRY S. TRUMAN PKWY**

SUITE 175 | ANNAPOLIS, MD

Ryan J. Brant
rbrant@rossocre.com
C | 301.768.2710

John Rosso SIOR
john@rossocre.com
C | 410.802.1909



One Annapolis Street | Suite 101 | Annapolis, MD 21401 | www.RossoCRE.com

While we have no reason to doubt the accuracy of any of the information supplied, we cannot, and do not, guarantee its accuracy. All information should be independently verified prior to a purchase or lease of the property. We are not responsible for errors, omissions, misuse, or misinterpretation of information contained herein and make no warranty of any kind, express or implied, with respect to the property or any other matters.