



Pahrump Medical Center

Elizabeth Heller

Owner

(775) 537-4096

Pahrumpmedicalcenter@gmail.com

FOR LEASE

1480 E Calvada Blvd #900A

Pahrump, NV 89048



PROPERTY SUMMARY



DESCRIPTION

Newly remodeled! Call Now to See this clean professional office space in central Pahrump, Nevada. The 1500' ft unit is ground level, featuring an efficient floor plan, adjoined to other medical practices.

Ready to move in? We are ready to welcome you and assist in a smooth ideal start or expansion for your professional business. This commercial space features 5 generous-sized office/exam rooms, 2 bathrooms as well as a reception, waiting room and comfortable kitchen/break room. The adjacent parking area is substantial and included in rent.

Pahrump is an easy 1-hour drive, 62 miles west of Las Vegas in a rapidly growing suburban-rural mixed community with a population of nearly 55000 people with numerous thriving businesses in the close area.

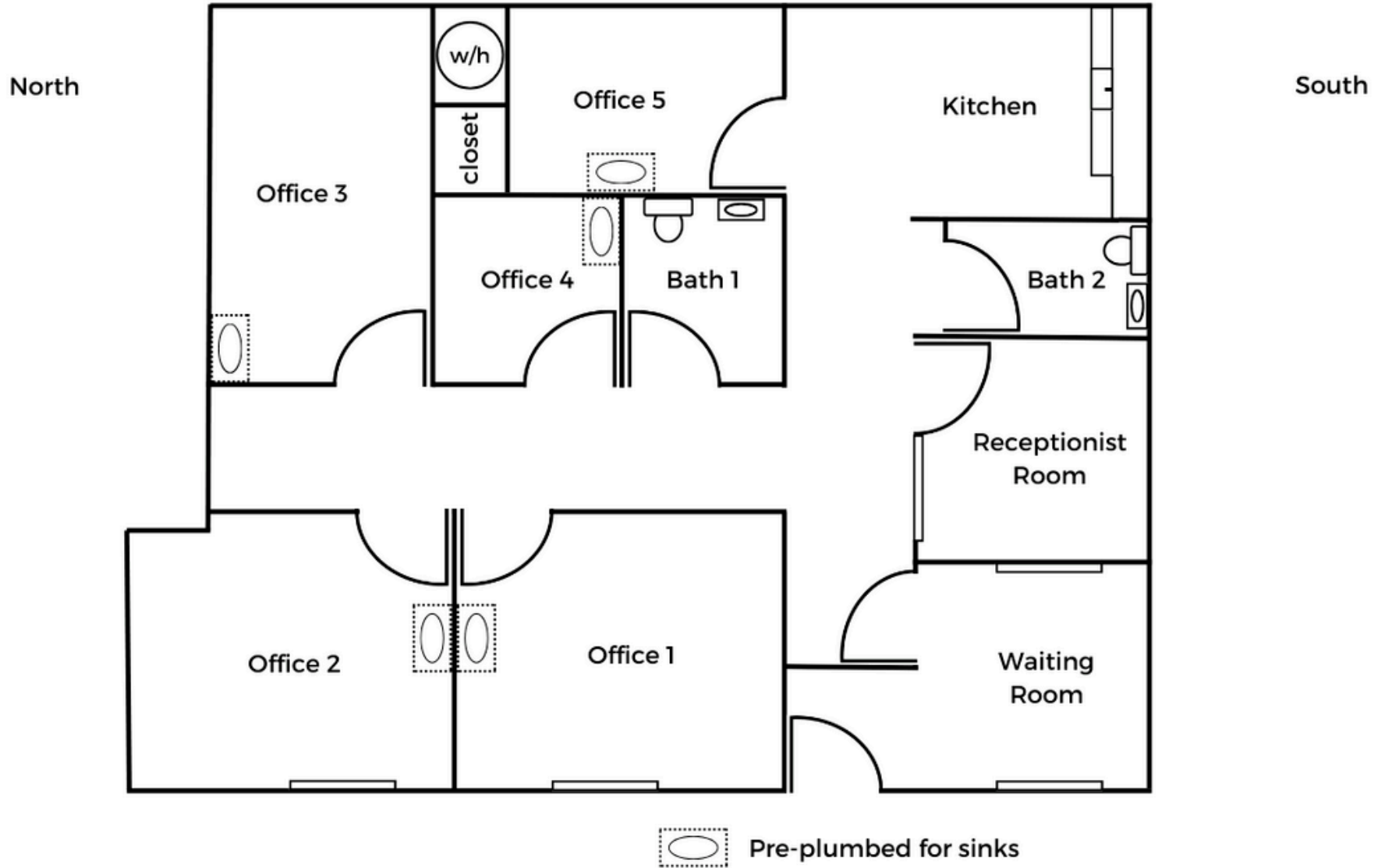
OFFERING SUMMARY

LEASE RATE:	\$ 1.10 / SF
AVAILABLE SF:	1,500 SF
BUILDING	6,000 SF
SIZE:	1,500 SF

PROPERTY HIGHLIGHTS

- Free parking with lighting.
- Each room is doubled drywalled for soundproofing.
- CAM charges include outside lighting, water/ sewer, pest control and trash.
- Tenant is responsible for interior gas and electric.
- High speed internet into the suite.
- Convenient floor plan for any specialty practice: every room has water already has a separate break room and staff bath as well as a secondary office .
- Recent upgrades to suite include: new paint, new interior doors, water available in each room, new flooring, and 2 new ledges for HIPAA compliant receptionist windows.
- Four offices can have plumbing installed for sinks.
- 2 Large LED lighted signs (front & back of office building) for your signage
- Landlord will also help with marketing of your business the first year to help drive traffic to your location! Your success is our success!

LEASE SPACES



LEASE INFORMATION

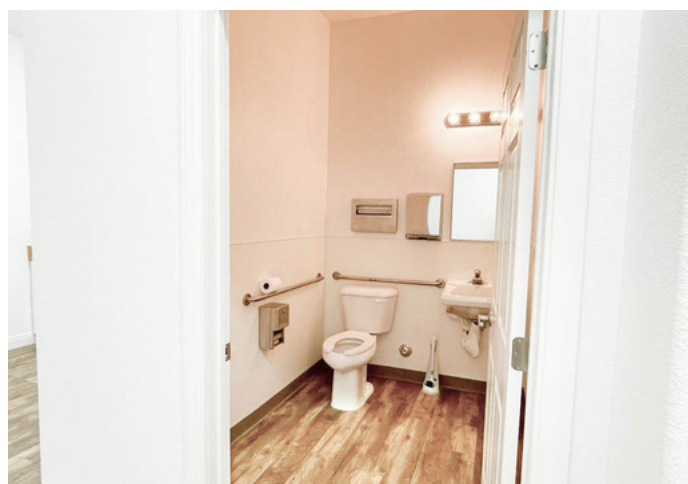
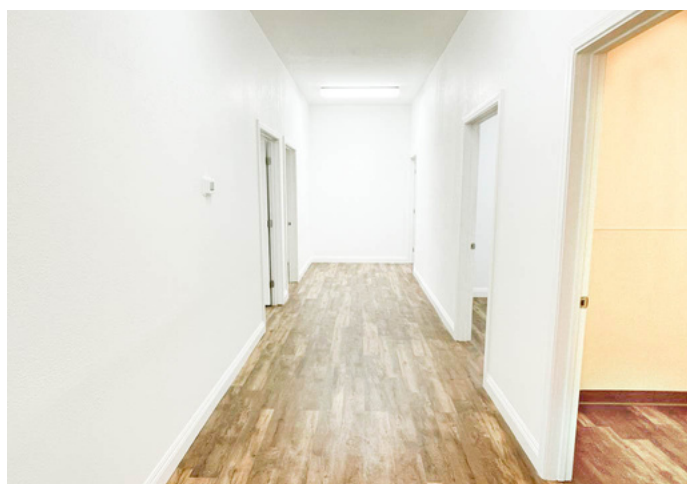
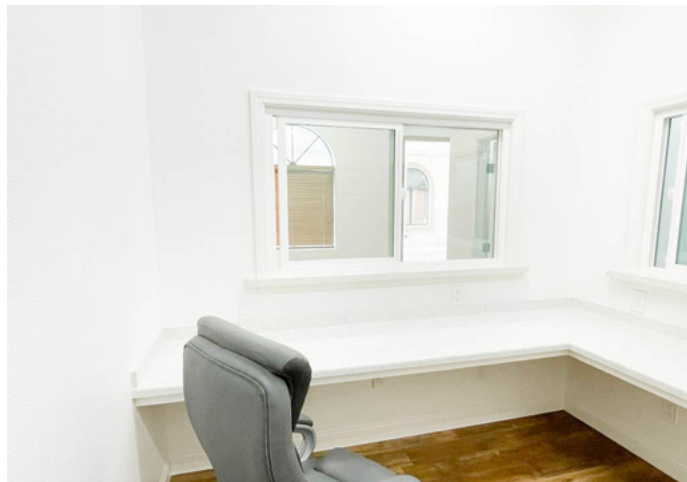
LEASE TYPE: Operating

LEASE TERM: Negotiable

TOTAL SPACE: 1,500 SF

LEASE RATE: \$1.10 SF/month

ADDITIONAL PHOTOS



ADDITIONAL PHOTOS





Pahrump Medical Center

Contact Us

Elizabeth Heller

Owner



(775) 537-4096



Pahrumpmedicalcenter@gmail.com



1480 E Calvada Blvd #900A
Pahrump, NV 89048



www.pahrumpmedicalcenter.net