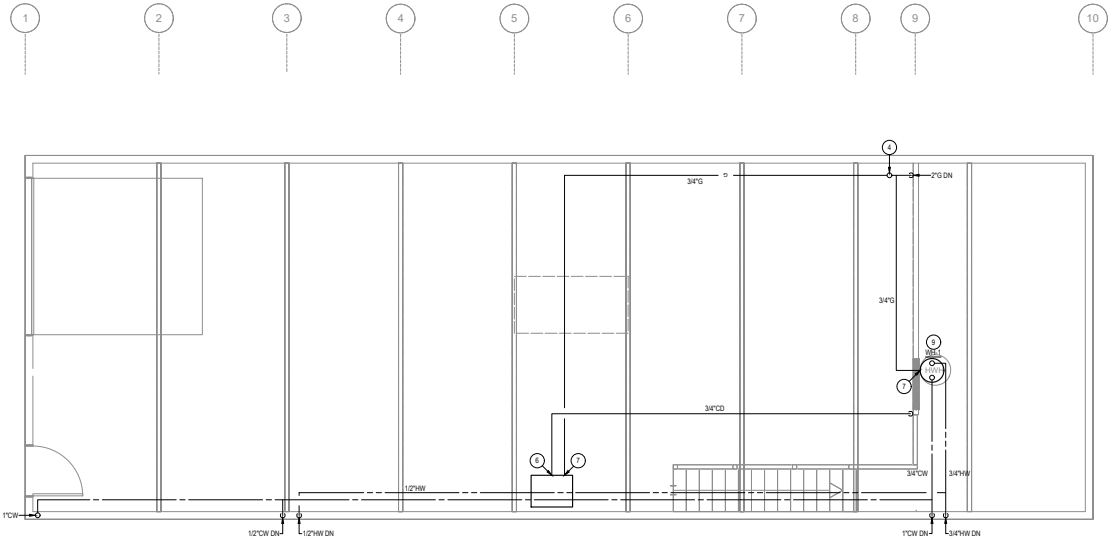


1 PLUMBING FLOOR PLAN  
1/8" = 1'-0"



2 PLUMBING MEZZANINE PLAN  
1/8" = 1'-0"

**KEYED NOTES:**

- 1 EXISTING IN FLOOR GREASE INTERCEPTOR DOES NOT HAVE ADEQUATE CAPACITY FOR 300WV SINK. REMOVE EXISTING INTERCEPTOR AND MODIFY WASTE LINE TO ASSURE WASTE LINE IS NOT INTERRUPTED. VERIFY CONDITIONS IN FIELD.
- 2 RELOCATE EXISTING FLOOR SINK TO LOCATION INDICATED. MODIFY WASTE AND VENT CONNECTIONS AS REQUIRED.
- 3 CONNECT TO EXISTING WASTE AND VENT. MODIFY ROUGH-INS AS REQUIRED. PROVIDE NEW WATER CONNECTIONS AS INDICATED. VERIFY CONDITIONS IN FIELD.
- 4 CONNECT TO EXISTING GAS AT CEILING. VERIFY CONDITIONS IN FIELD.
- 5 PROVIDE NEW GAS SOLENOID VALVE FOR TYPE I HOOD. INTERLOCK VALVE WITH HOOD FIRE SUPPRESSION SYSTEM TO SHUT DOWN GAS BELOW HOOD.
- 6 CONNECT TO EXISTING WATER WHERE WATER ENTERS BUILDING. ROUTE UP IN WALL TO UNDERSIDE OF CEILING. VERIFY CONDITIONS IN FIELD.
- 7 CONNECT GAS THROUGH DIRT LEG, GAS COOK UNION AND FLEXIBLE CONNECTION. COORDINATE WITH MECHANICAL SECTION OF WORK.
- 8 STUB OUT 2" GAS 18" AFF FOR CONNECTION TO HOOD APPLIANCES.
- 9 ROUTE WATER HEATER RELIEF TO MOP SINK.

Issue	Date
BUILDING PERMIT SET	10.03.23

**HVER ARCHITECTURE**  
263 Amherst Avenue  
Berkeley, CA 94704  
510.827.1915 [1-1]

**FIRE REPAIR**  
724 Allison Way  
Berkeley, CA 94710

**PLUMBING FLOOR PLANS**

Date	10.03.23
Issue	FOR PERMIT
Drawn by	SL
Sheet	

**LITZENBERGER ENGINEERING INC.**  
30327 Conley Road #100  
Alhambra, CA 91807  
Phone: (626) 999-1902  
LEI 2365