



1552 BERGEN PARKWAY

Evergreen, Colorado 80439

PROPERTY FEATURES

- Excellent high-visibility location in Bergen Park
- Locally Owned and Managed
- Close to restaurants, retail centers and grocery stores
- Second floor space with unique high vaulted ceilings
- Large windows with great views
- Private restroom in suite



PROPERTY SPECIFICATIONS

Available:	Suite 201	927 RSF
Lease Rate:		\$11.50/SF NNN
NNN:		\$10.00/SF
Availability:		Immediate
Building Size:		13,000 SF

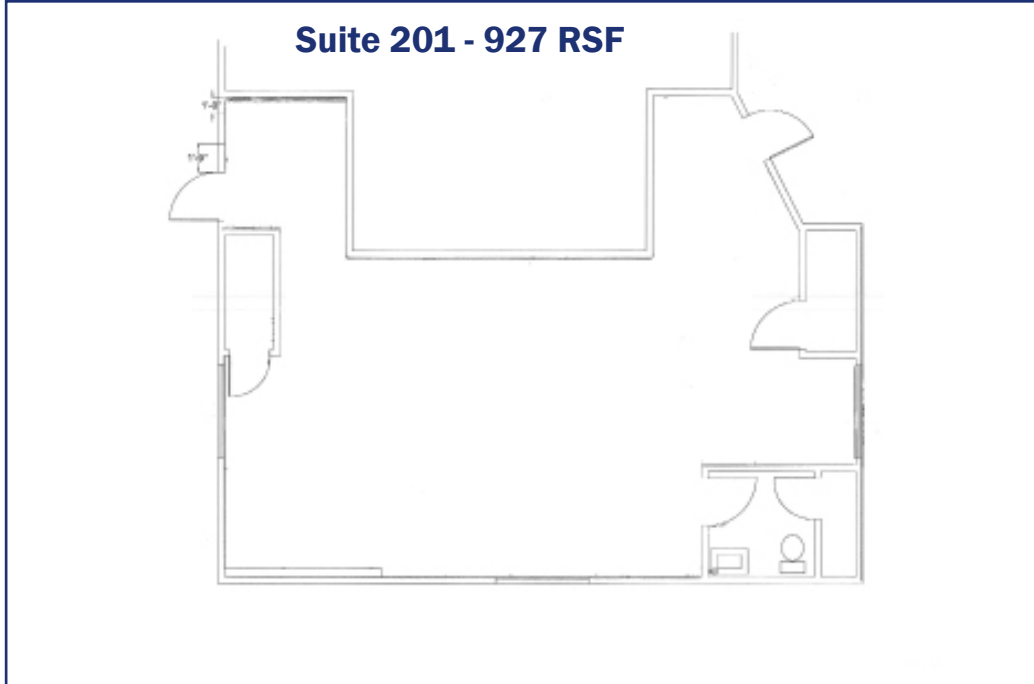
FOR MORE INFORMATION CONTACT:

RENÉE SPICER

rspicer@gcgcre.com | 720.476.5226

JAMIE MACBETH

jmacbeth@gcgcre.com | 720.476.5229



FOR MORE INFORMATION CONTACT:

RENÉE SPICER

rspicer@gcgcre.com | 720.476.5226

JAMIE MACBETH

jmacbeth@gcgcre.com | 720.476.5229