

FOR LEASE

3233 W CASTOR ST.
SANTA ANA, CALIFORNIA

+37,690 SQUARE FEET AVAILABLE FOR LEASE



Voit

REAL ESTATE SERVICES

2020 Main Street | Suite 100 | Irvine, California 92614 | 949.851.5100 | 949.261.9092 Fax | www.Voitco.com



TODD MARTENS
Vice President
Lic # 01469247
949.263.5331
tmartens@voitco.com

±37,690 SQUARE FEET AVAILABLE FOR LEASE

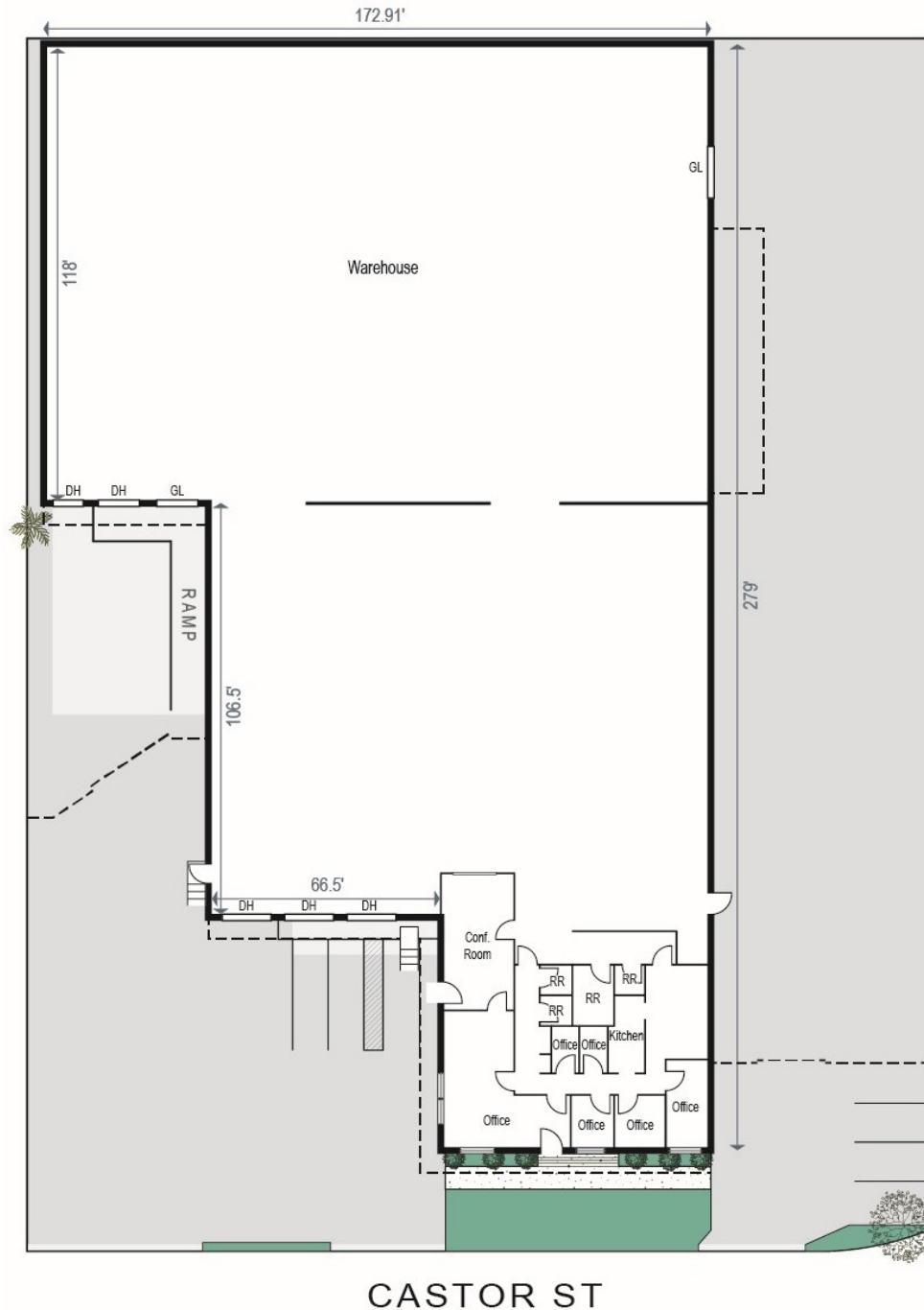


PROPERTY FEATURES:

- Free Standing, Single Story Building
- Approximately 2,500 SF Office
 - Bonus Mezzanine Storage – 2,000 SF (approx.)
- Dock High Loading Doors – 5
- Ground Level Loading Doors – 2
- Clear Height – 20' (approx.)
- Fenced Yard – 13,800 SF (approx.)
- Power – 400 AMPS 120/208 V
- Newer Roof and HVAC
- Warehouse Lighting - Motion Sensor T-9
- Sprinklers - .66 GPM/3000
- LOW NNN Fees – \$0.10 PSF (approx.)



±37,690 SQUARE FEET AVAILABLE FOR LEASE



±37,690 SQUARE FEET AVAILABLE FOR LEASE



FOR LEASE

3233 W CASTOR ST.
SANTA ANA, CALIFORNIA

+37,690 SQUARE FEET AVAILABLE FOR LEASE



Voit

REAL ESTATE SERVICES

2020 Main Street | Suite 100 | Irvine, California 92614 | 949.851.5100 | 949.261.9092 Fax | www.Voitco.com



TODD MARTENS
Vice President
Lic # 01469247
949.263.5331
tmartens@voitco.com