



**7720 HIGHLAND
ROAD**

**7720 Highland Road
Waterford, MI 48327**

7720 Highland Road offers 4,200 square feet of warehouse or shop space, located prominently along M-59. This prime location offers excellent visibility, making it an ideal spot for businesses looking to standout. The M-59 road frontage ensures your business will be seen by thousands of potential customers daily. The property offers a secured fenced yard and 2 overhead doors for easy loading and unloading.



LEASE

Call for Rate

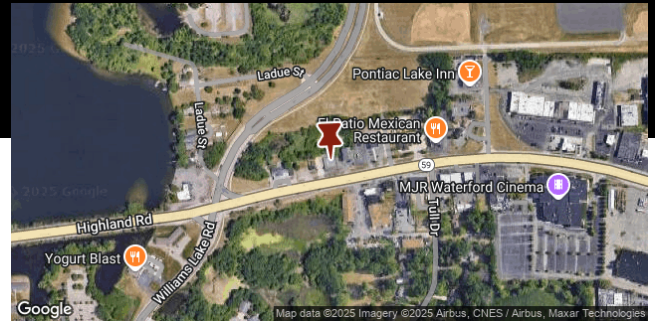
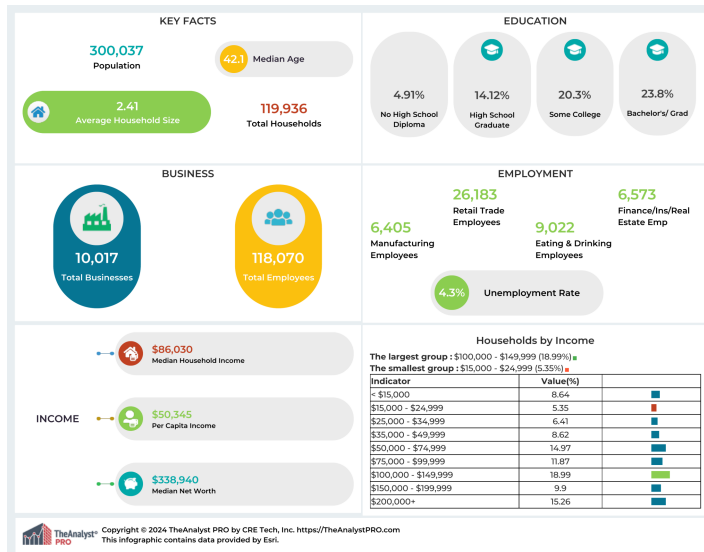
***Rental Area: 4,200 Sq. Ft.
Year Built: 1967***

Contact:
313.312.5764
TREVOR BROOKS
License: 6501374378
t.brooks@kwcommercial.com



SPACE FOR LEASE

313.312.5764



This information has been obtained from sources believed reliable. We have not verified it and make no guarantee, warranty or representation about it. Any projections, opinions, assumptions or estimates used are for example only and do not represent the current or future performance of the property. You and your advisors should conduct a careful, independent investigation of the property to determine to your satisfaction the suitability of the property for your needs. Photos herein are the property of their respective owners and use of these images without the express written consent of the owner is prohibited.