



Crescent One

25 Goldsmith St, Greenville, SC 29609

Nate Tomforde

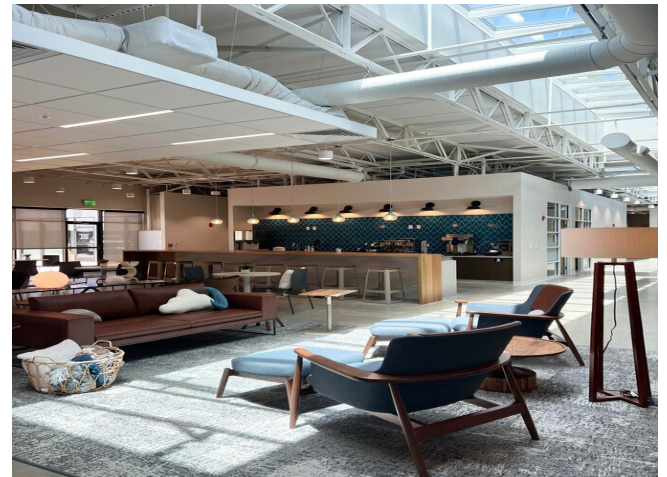
Hartness Development Inc
500 Hartness Dr, Greenville, SC 29615
nate@hartnessliving.com
(864) 610-5441



Crescent One

\$27.00 /SF/YR

Crescent Startup Community, a large-scale mixed-use Innovation District will provide a dedicated space for startups, entrepreneurs, and the development of innovative ideas and research. Crescent will sit on seven acres of land on Poinsett Highway and open in late Spring 2024 with the completion of Phase One, a 56,000 square foot adaptive reuse project. Phase Two will include 150,000 square feet of new build mixed-use space dedicated to innovation....



Rental Rate:	\$27.00 /SF/YR
Property Type:	Office
Property Subtype:	Loft/Creative Space
Building Class:	A
Rentable Building Area:	56,000 SF
Year Built:	1954
Walk Score ®:	47 (Car-Dependent)
Rental Rate Mo:	\$2.25 /SF/MO

Unknown Floor Ste I

Space Available	5,773 SF
Rental Rate	\$27.00 /SF/YR
Date Available	Now
Service Type	Full Service
Space Type	Relet
Space Use	Office
Lease Term	5 - 20 Years

Positioned on the 2nd floor this space has its own elevator access and includes \$60 per SF in TI allowance. This space is located in the largest coworking space in Greenville, SC.

1

1st Floor Ste G

Space Available	5,871 SF
Rental Rate	\$27.00 /SF/YR
Date Available	Now
Service Type	Full Service
Space Type	Relet
Space Use	Office/Retail
Lease Term	5 Years

Office Space for Lease at Crescent Startup Community. Crescent Startup Community is a vibrant innovation district designed for startups, entrepreneurs, and groundbreaking research. Crescent One, located on seven acres along Poinsett Highway, offers prime office space in a dynamic environment. Full-Service Lease! This comes with \$90 per SF in TI allowance. Tenant Benefits: Discounted Gym Membership Outdoor Entertainment Venue Collaborative Spaces Swamp Rabbit Trail Expansion Community and Innovation Close Proximity to Downtown

2

1st Floor Ste H

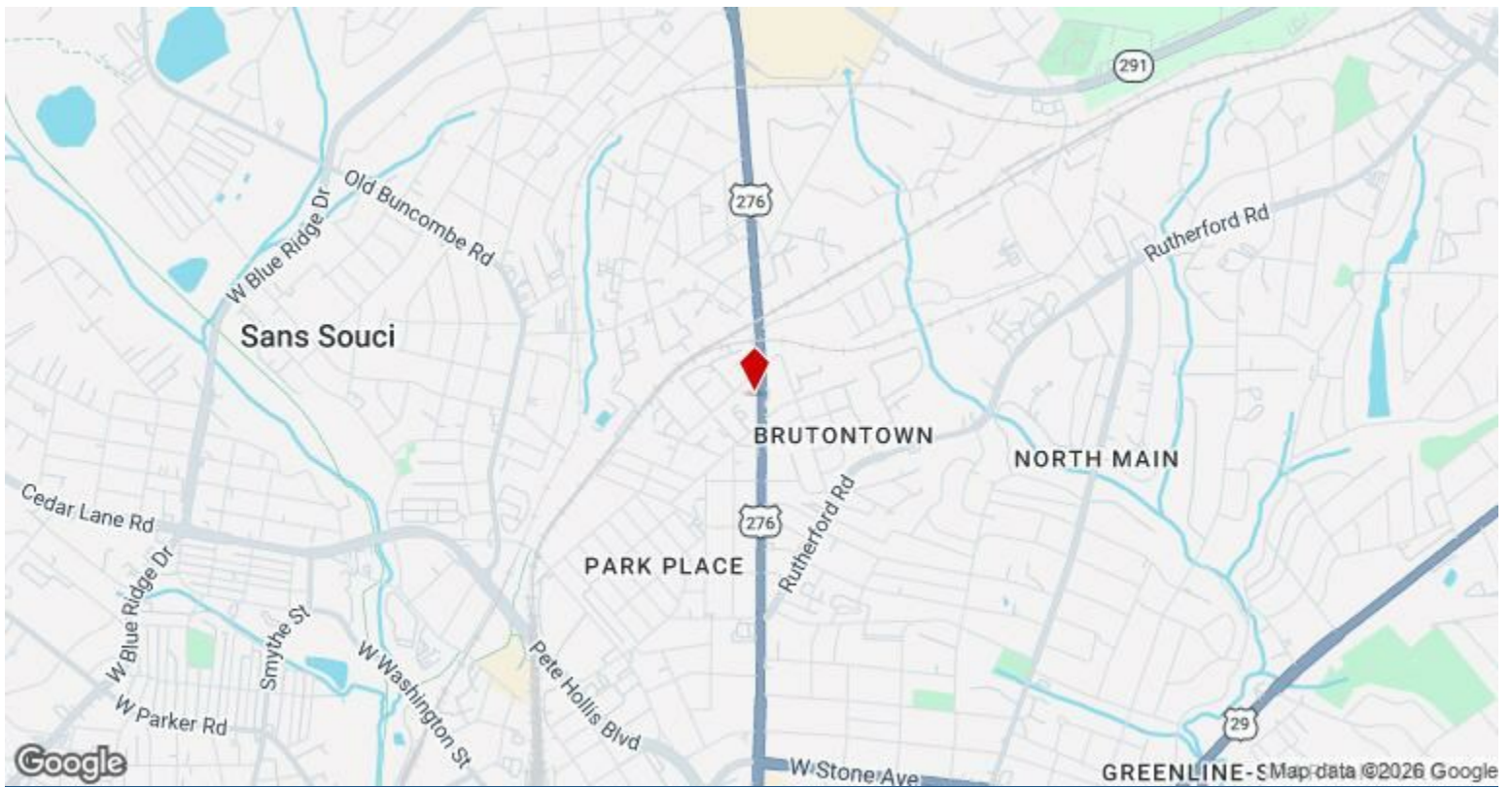
Space Available	3,137 SF
Rental Rate	\$27.00 /SF/YR
Date Available	Now
Service Type	Full Service
Space Type	Relet
Space Use	Office/Retail
Lease Term	5 - 20 Years

This space includes a \$60 per SF TI allowance in the largest coworking space in Greenville, SC. This coworking space has over 50 companies using and running their businesses here.

3

Major Tenant Information

Tenant	SF Occupied	Lease Expired
Flywheel	-	
Furman University	-	



25 Goldsmith St, Greenville, SC 29609

Crescent Startup Community, a large-scale mixed-use Innovation District will provide a dedicated space for startups, entrepreneurs, and the development of innovative ideas and research. Crescent will sit on seven acres of land on Poinsett Highway and open in late Spring 2024 with the completion of Phase One, a 56,000 square foot adaptive reuse project. Phase Two will include 150,000 square feet of new build mixed-use space dedicated to innovation.

Property Photos



Interior Photo



Building Photo

Property Photos



Building Photo