



SCHACKER REALTY

Exclusive Listing

## Industrial Property For Sale Or Lease, Available: 62,360 sq. ft. 19 Harbor Park Dr, Port Washington



### Specifications:

Building Size:	62,360 sq. ft.
Lot Size:	4.18 Acres
Office Space:	12,843 sq. ft.
Ceiling Height 1:	22.0' @ 49,774 sq. ft.
Ceiling Height 2:	12.0' @ 12,584 sq. ft.
Loading:	6 Dock(s), 1 Drive-in(s)
Power:	1,200 amps
A/C:	Offices Only
Parking:	99
Sewers:	Yes

### Pricing and Timing:

Occupancy:	Immediately
Sale Price:	\$18,500,000 (\$296.66/sq. ft.)
Lease Price:	\$ 17.50 Net
Taxes:	\$309,641.20 (\$4.97/sq. ft.)

Furnished & racked Class A industrial building located in Nassau County's finest business park • 150kw (600 amp) Back-up generator, LED lighting, Full dock packages • 5 miles to NYC border, 6 minutes to Long Island Expwy.



James Parnes, RE Salesperson  
516-732-7864 (cell)  
631-293-3700 x45  
jp@schackerrealty.com



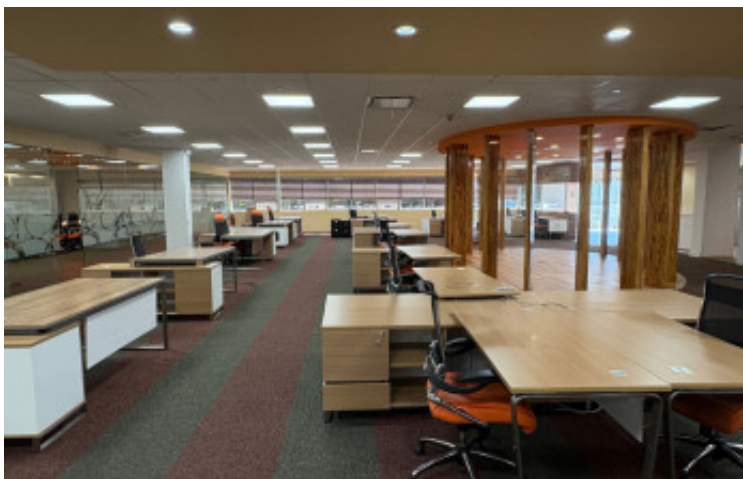
Philip Shwom, SIOR, CCIM, President  
631-786-4422 (cell)  
631-293-3700 x39  
ps@schackerrealty.com  
Real Estate Broker

All information is subject to errors, omissions, modification, and withdrawal.  
Measurements may be estimates and information shown should not be relied upon without independent verification.



SCHACKER REALTY

19 Harbor Park Dr, Port Washington



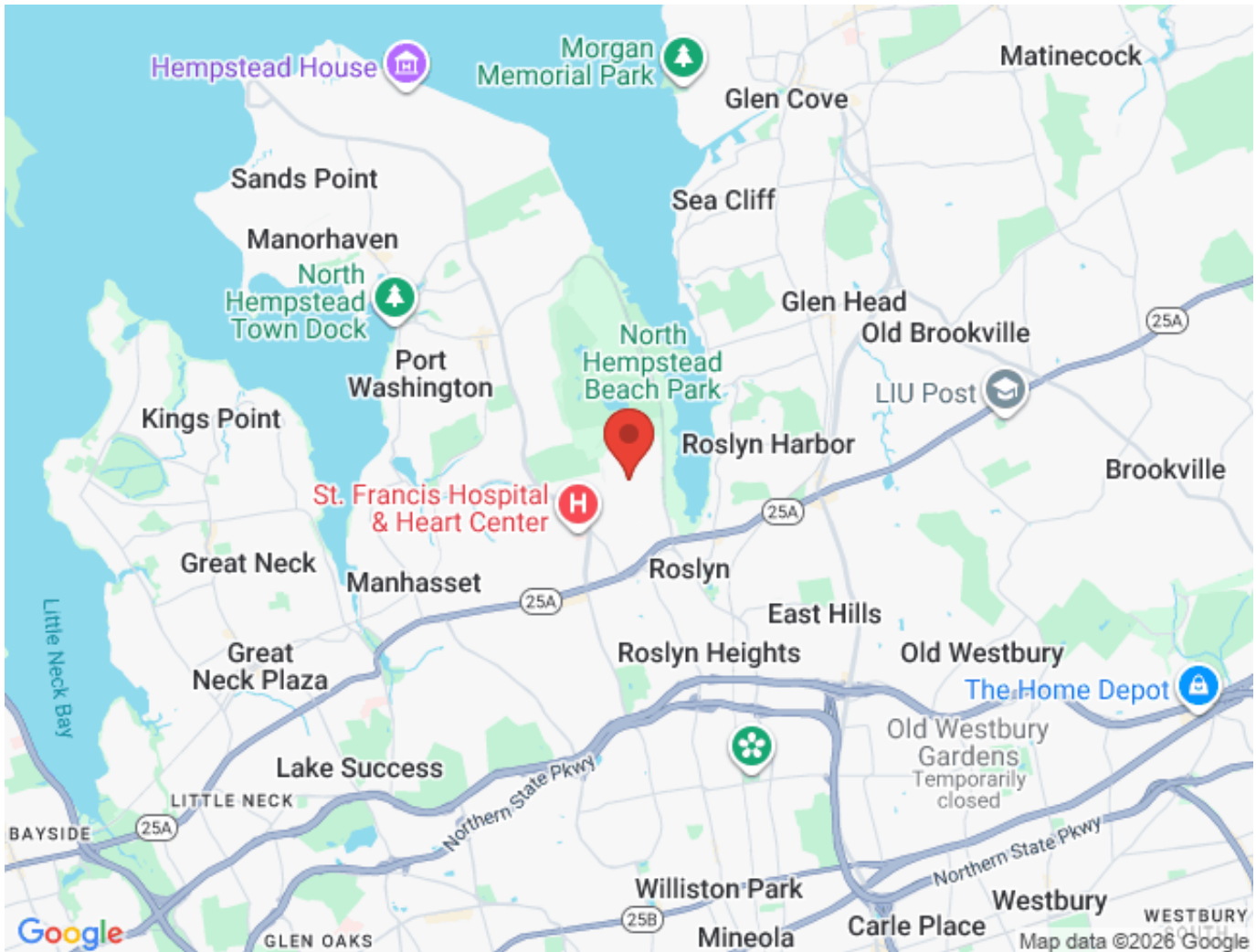
All information is subject to errors, omissions, modification, and withdrawal.  
Measurements may be estimates and information shown should not be relied upon without independent verification.



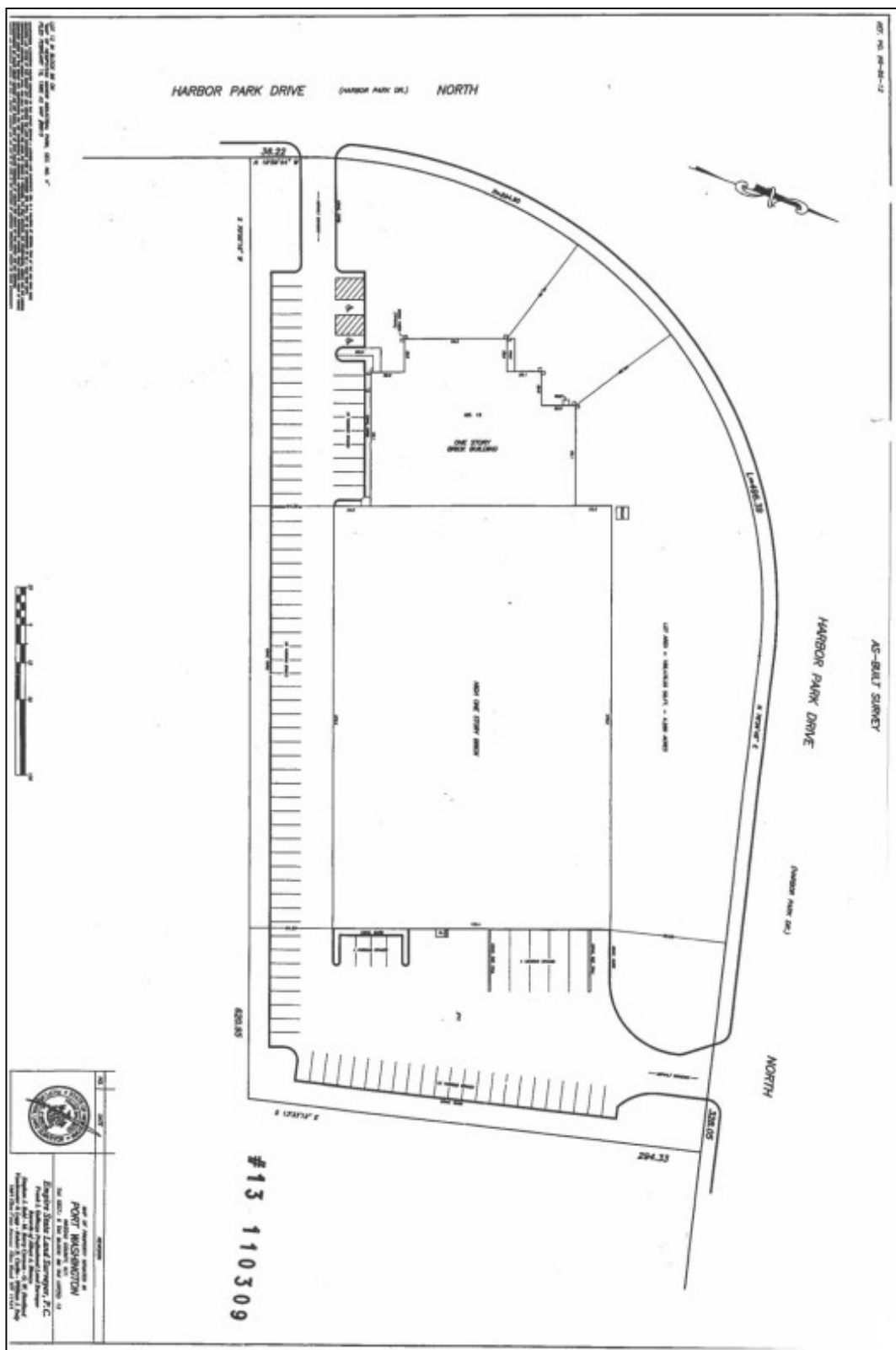


SCHACKER REALTY

## 19 Harbor Park Dr, Port Washington



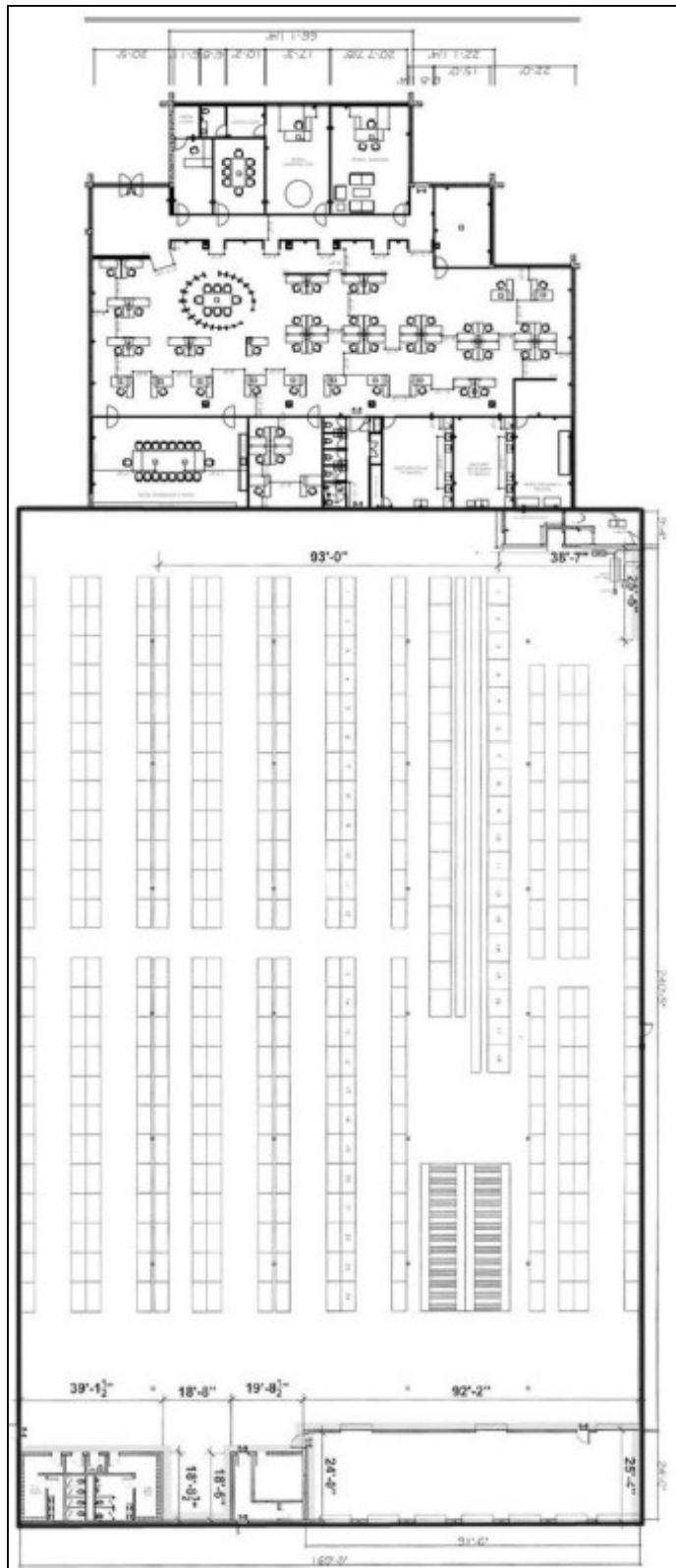
All information is subject to errors, omissions, modification, and withdrawal.  
Measurements may be estimates and information shown should not be relied upon without independent verification.





SCHACKER REALTY

19 Harbor Park Dr, Port Washington



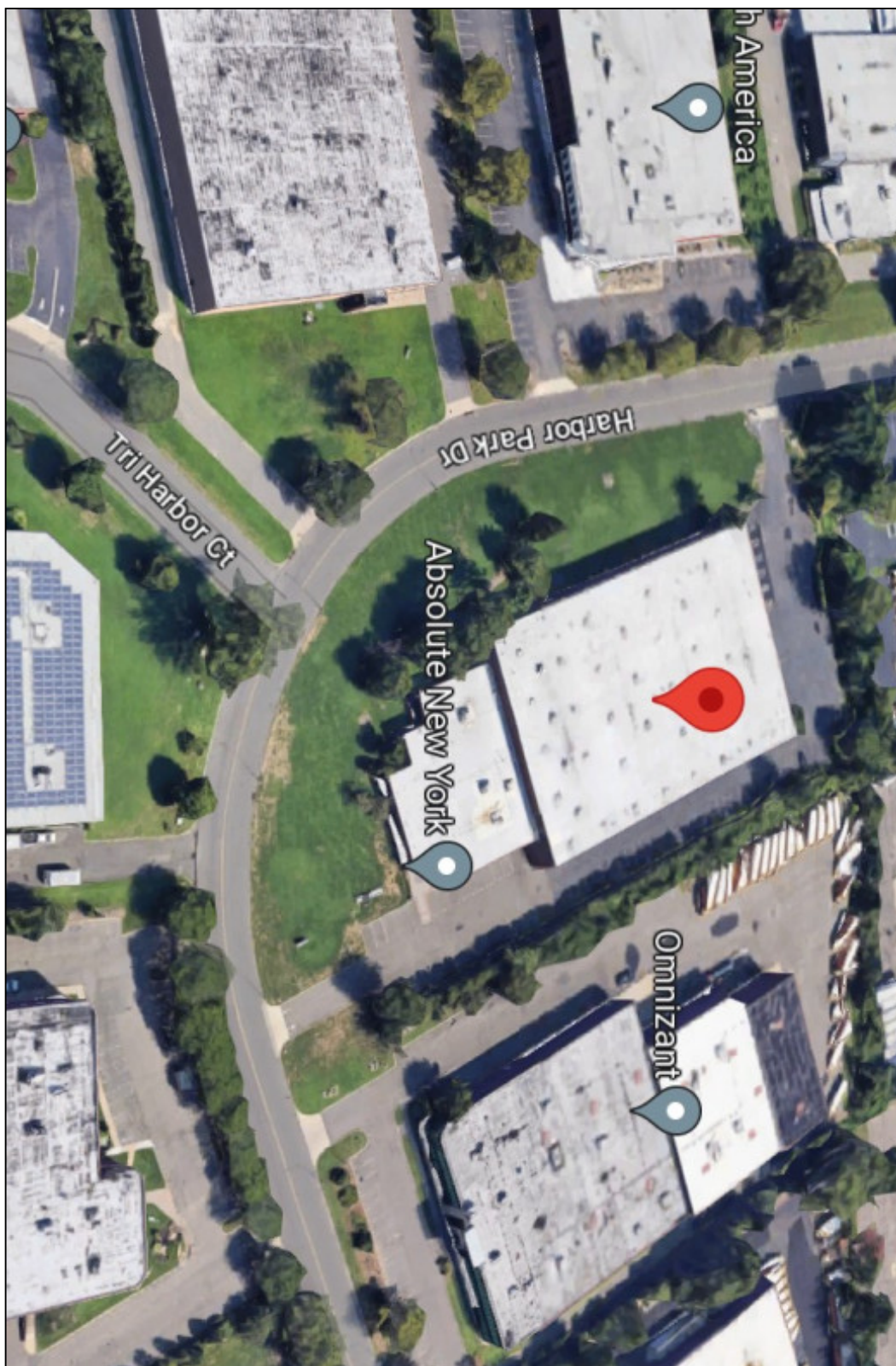
All information is subject to errors, omissions, modification, and withdrawal.  
Measurements may be estimates and information shown should not be relied upon without independent verification.





SCHACKER REALTY

19 Harbor Park Dr, Port Washington



All information is subject to errors, omissions, modification, and withdrawal.  
Measurements may be estimates and information shown should not be relied upon without independent verification.