



8,927 SF Office/Medical Space for Lease

13801 Metcalf Avenue

Overland Park, KS

Location Details

13801 Metcalf Avenue

is a brand new 26,018 SF medical/office building located directly on Metcalf Avenue and near South Johnson County's best food, retail and entertainment spots including Prairie Fire and Lifetime Fitness. In close proximity to 69 Highway, 13801 Metcalf is surrounded by highly sought after single family and multifamily neighborhoods.



Demographics

Population

1-miles	3-miles	5-miles
13,825	91,221	191,752

Number of Households

1-miles	3-miles	5-miles
6,245	35,333	75,745

Median Household Income

1-miles	3-miles	5-miles
\$95,482	\$120,435	\$114,913

Median Age

1-miles	3-miles	5-miles
36.1	39.8	40.7

Availabilities

2nd Floor West Shell Space:

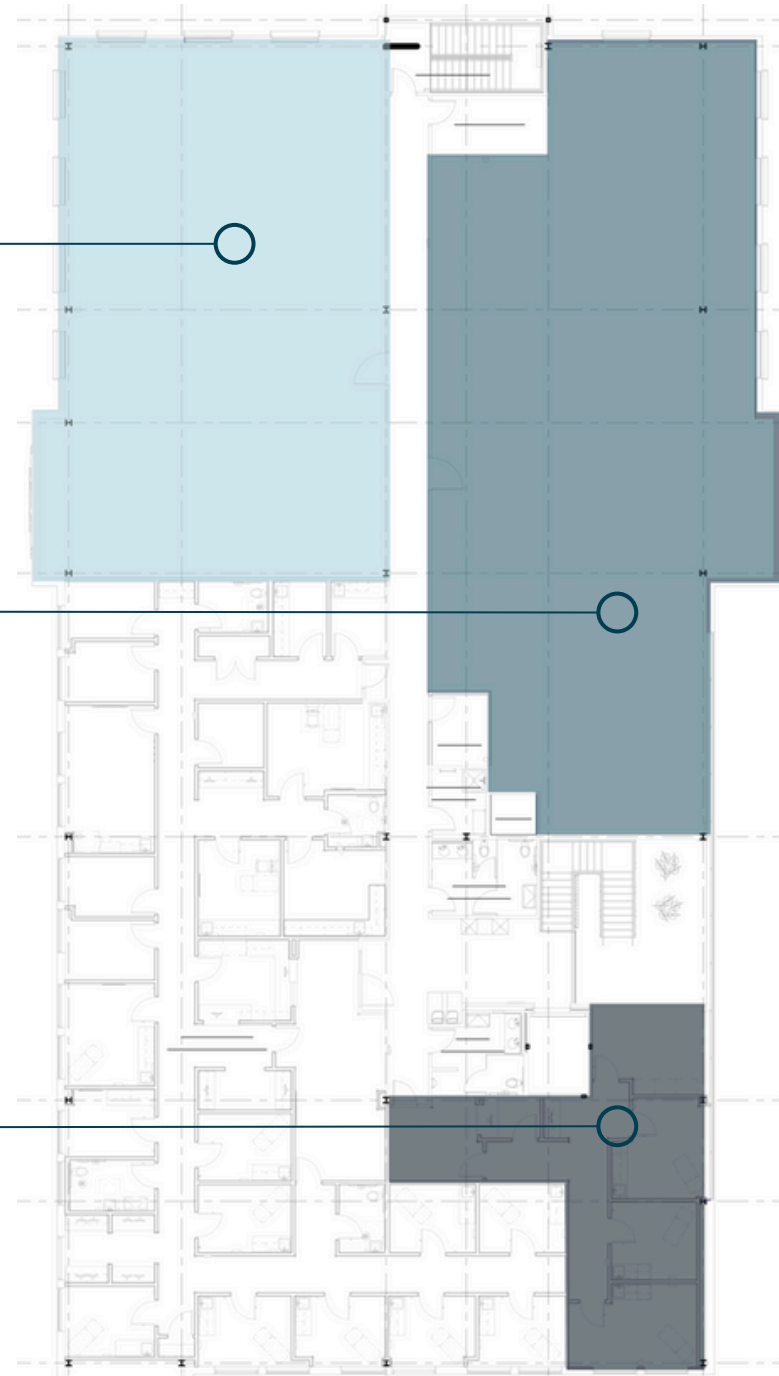
3,397 RSF
\$21.46 PSF NNN

2nd Floor East Shell Space:

4,306 RSF
\$21.46 PSF NNN

2nd Floor Spec Suite:

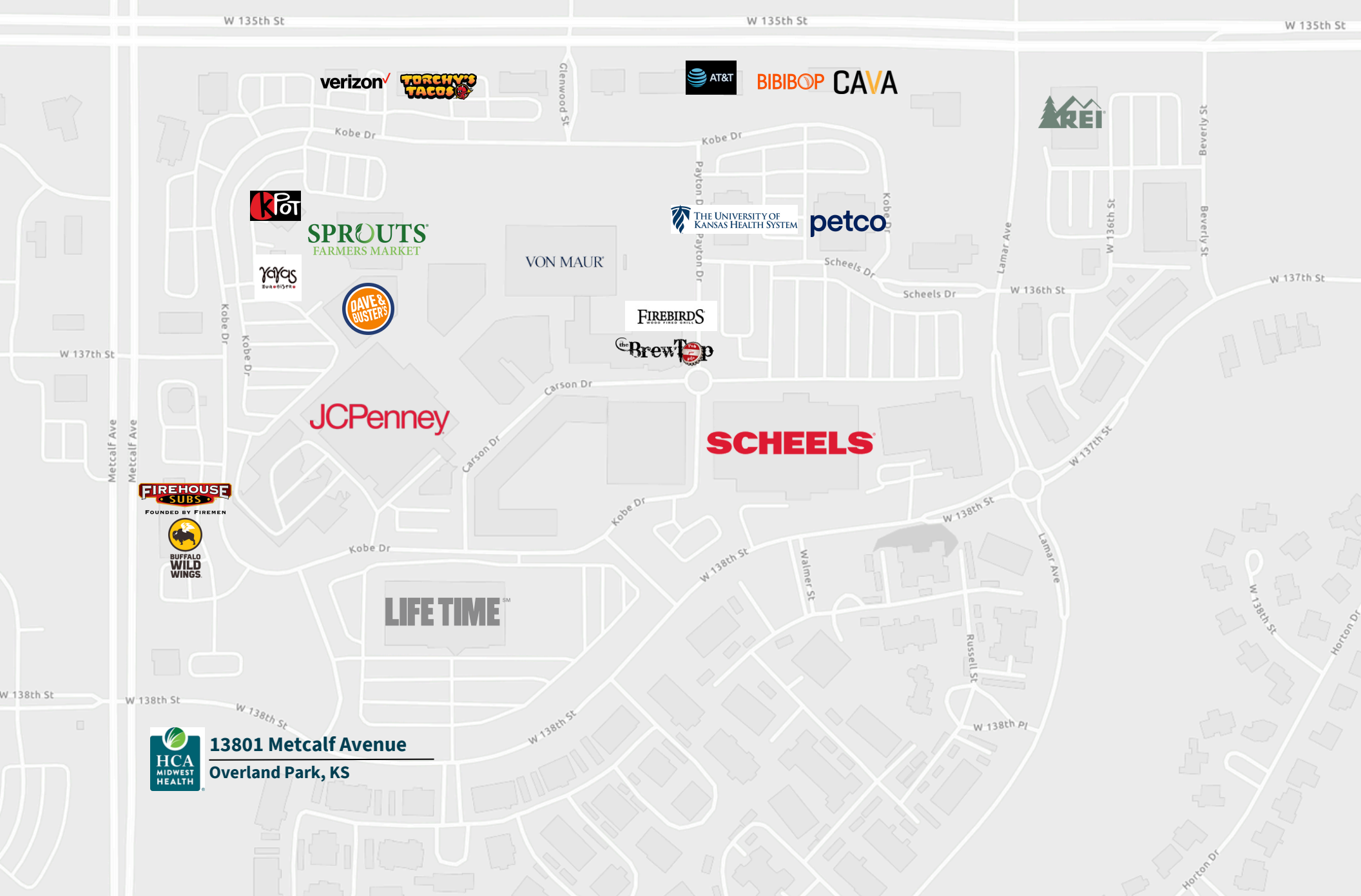
1,224 RSF
\$24.35 PSF NNN
Fully Furnished - available at additional cost
One office
Three exam rooms
Nursing station



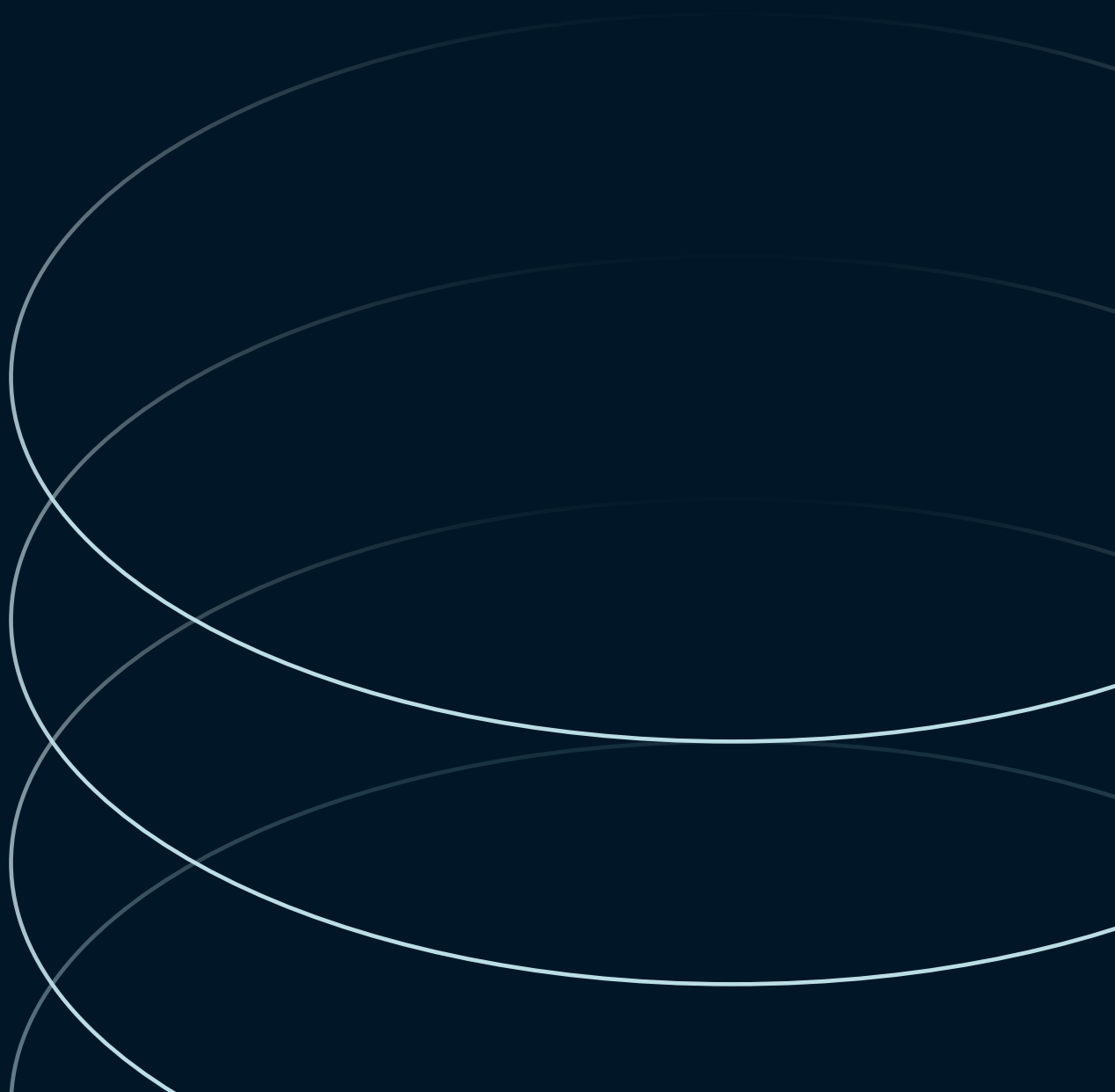
Space Photos



Amenities Map



 **13801 Metcalf Avenue**
Overland Park, KS



RJ Trowbridge

Senior Vice President
rj.trowbridge@jll.com
+1 913 469 4637

Avery Comeau

Associate
avery.comeau@jll.com
+1 913 927 9252