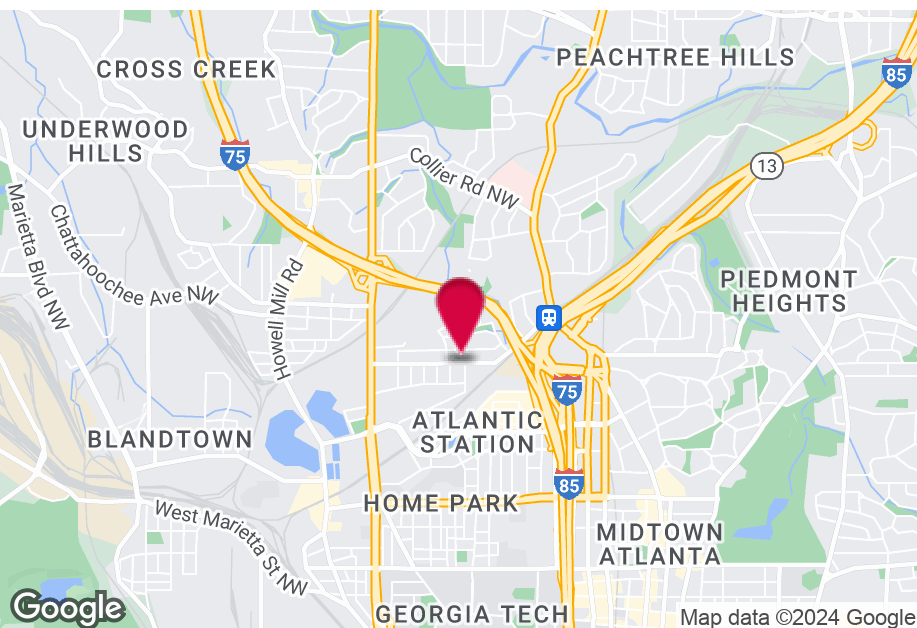


FOR LEASE

1486 MECASLIN STREET NORTHWEST, SUITE 200

Atlanta, GA 30309

3,300+/- SF OFFICE LOFT



PROPERTY HIGHLIGHTS

- Large Open Area Including Kitchen
- 4 Office / Studios
- 100% HVAC
- 2 Full Baths
- 2nd Floor
- Bonus 825+/- SF Concrete Decks

BUILDING SUMMARY

Available SF	3,300 SF
Building Size	10,054 SF
Zoning	I-1 Beltline Overlay

Brian Bratton, SIOR
Vice President
bbratton@kingindustrial.com
404.942.2028

Steve Ratchford, SIOR, CCIM
Senior Vice President
sratchford@kingindustrial.com
404.942.2003

King Industrial
Realty, Inc.

CORFAC
INTERNATIONAL

Industrial • Commercial • Investment

ADDITIONAL PHOTOS



Brian Bratton, SIOR
Vice President
bbratton@kingindustrial.com
404.942.2028

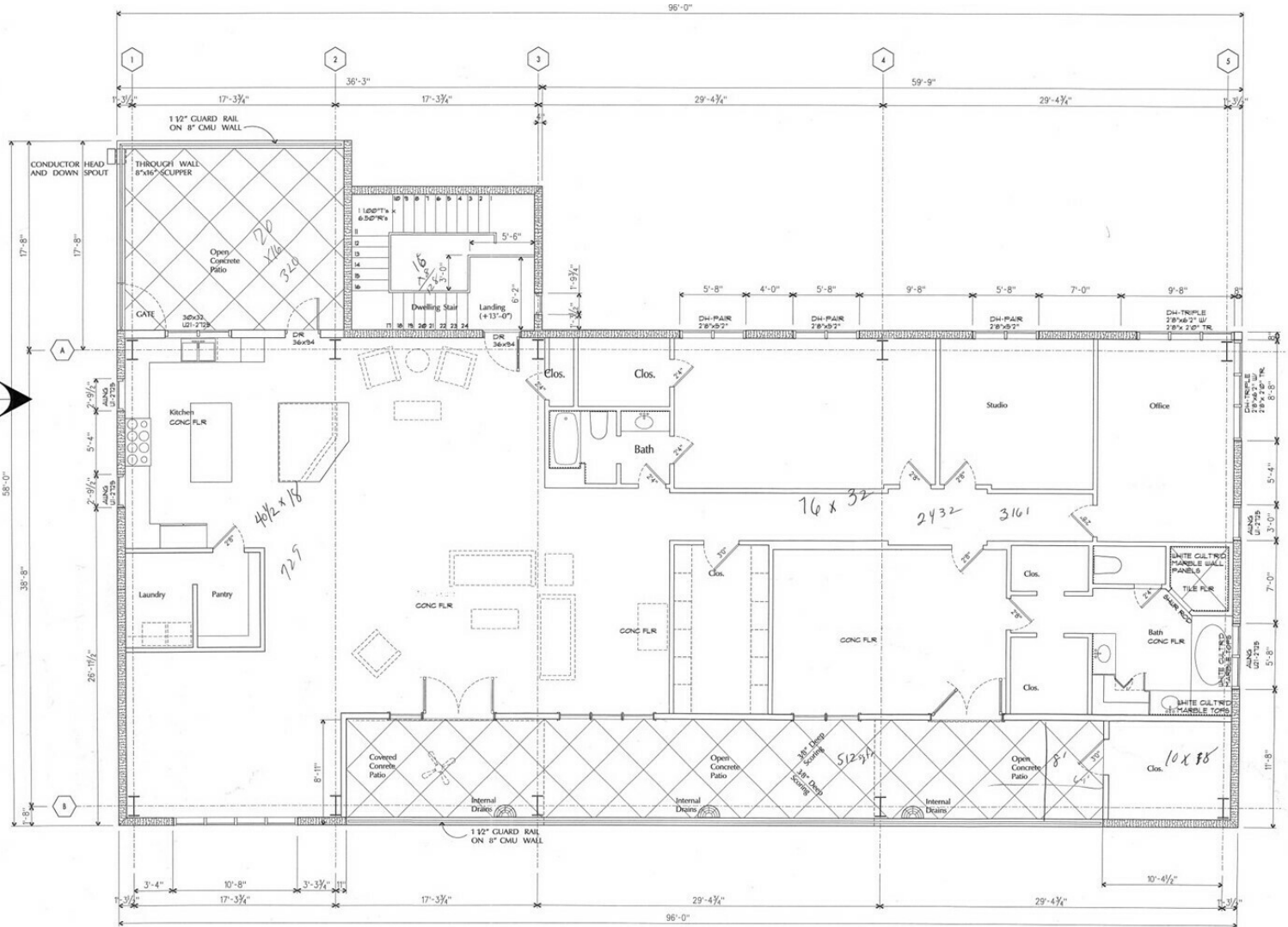
Steve Ratchford, SIOR, CCIM
Senior Vice President
sratchford@kingindustrial.com
404.942.2003

King Industrial Realty, Inc.

CORFAC
INTERNATIONAL

Industrial • Commercial • Investment

FLOOR PLAN



Brian Bratton, SIOR
 Vice President
 bbratton@kingindustrial.com
 404.942.2028

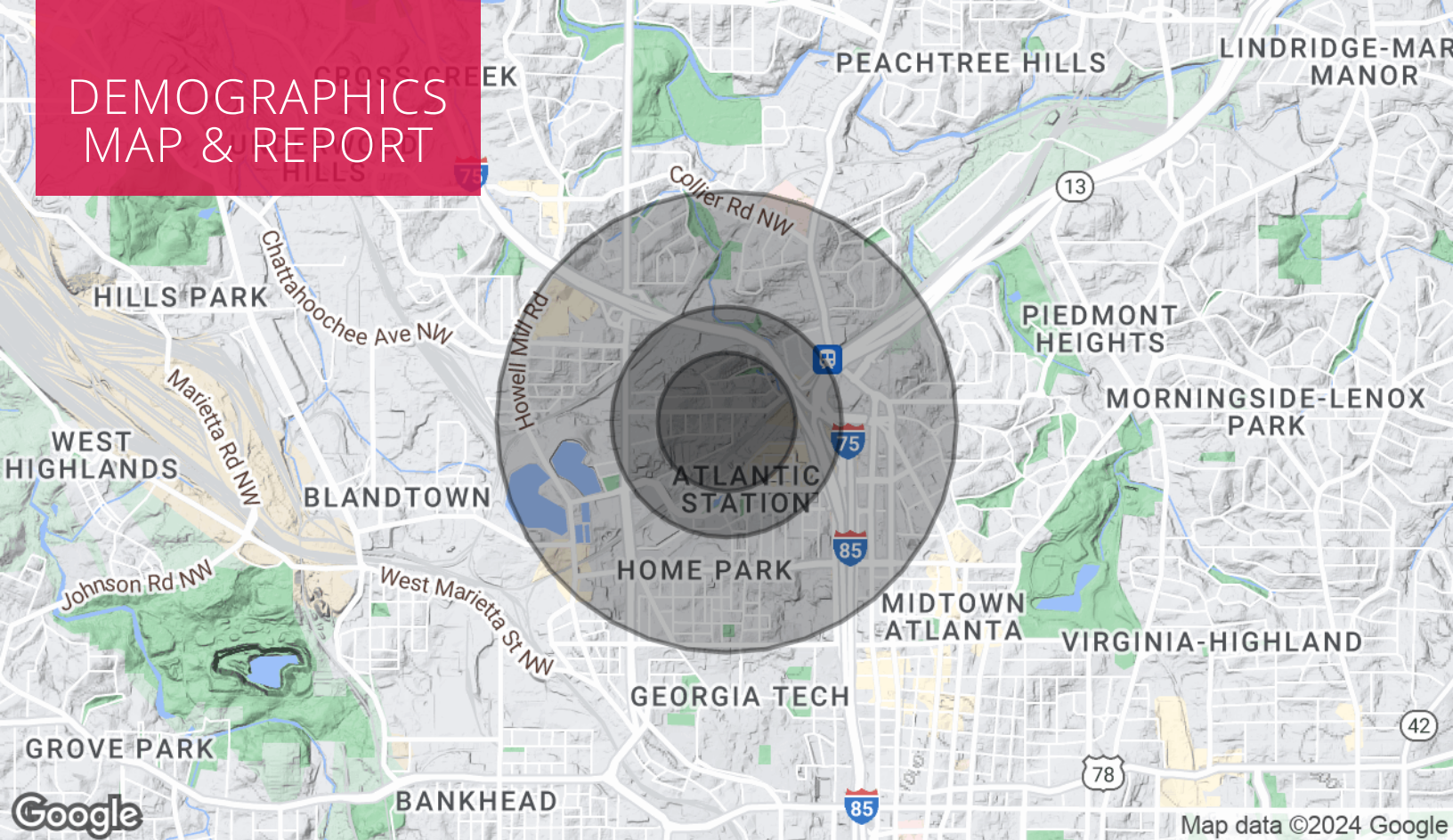
Steve Ratchford, SIOR, CCIM
 Senior Vice President
 sratchford@kingindustrial.com
 404.942.2003

King Industrial Realty, Inc.

CORFAC INTERNATIONAL

Industrial • Commercial • Investment

DEMOGRAPHICS MAP & REPORT



POPULATION

	0.3 MILES	0.5 MILES	1 MILE
Total Population	1,314	7,070	23,897
Average Age	35	35	34
Average Age (Male)	0	0	0
Average Age (Female)	0	0	0

HOUSEHOLDS & INCOME

	0.3 MILES	0.5 MILES	1 MILE
Total Households	809	4,431	13,129
# of Persons per HH	1.6	1.6	1.8
Average HH Income	\$123,264	\$116,680	\$127,281
Average House Value	\$732,429	\$600,431	\$663,501

Demographics data derived from AlphaMap

Brian Bratton, SIOR
Vice President
bbratton@kingindustrial.com
404.942.2028

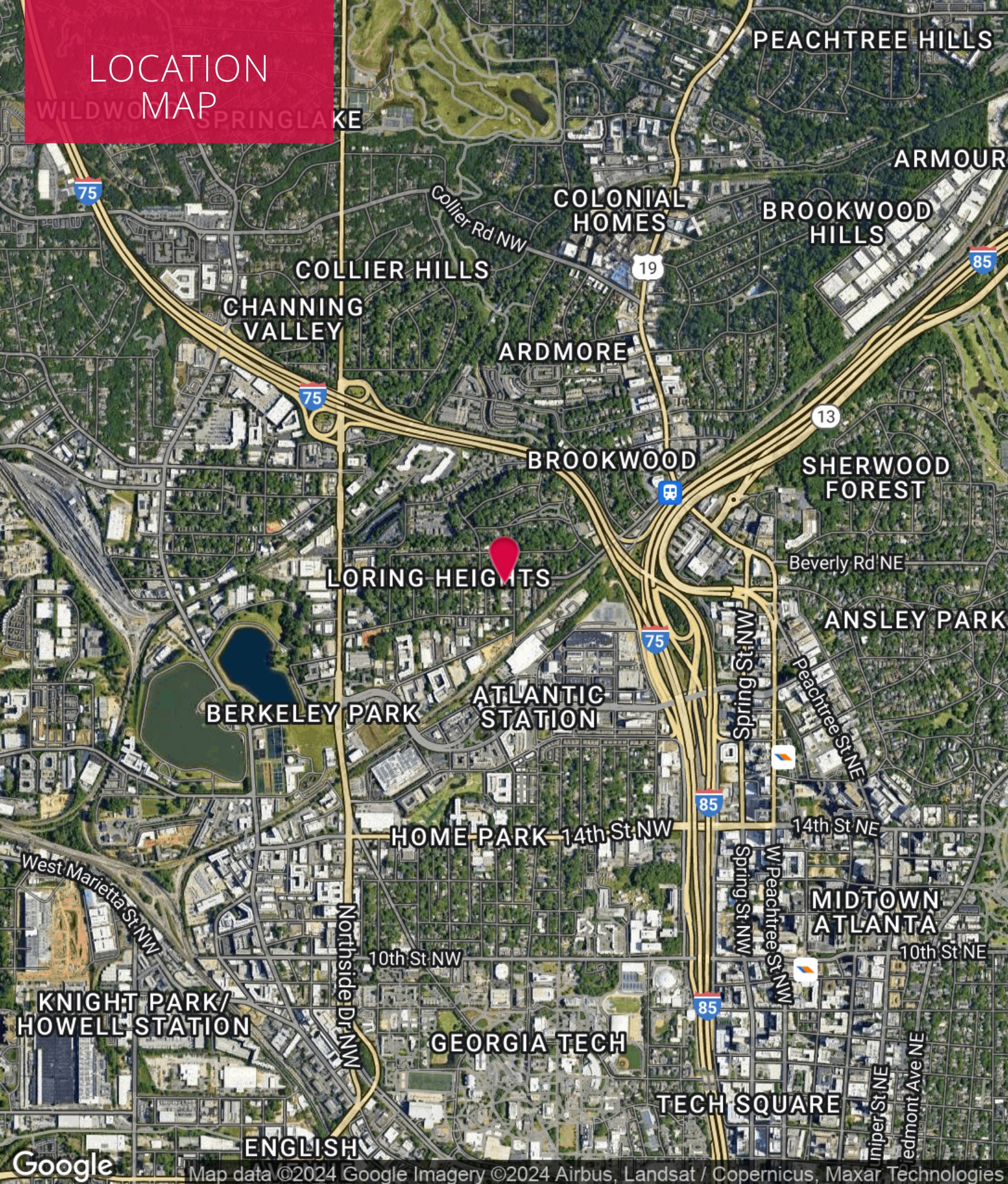
Steve Ratchford, SIOR, CCIM
Senior Vice President
sratchford@kingindustrial.com
404.942.2003

King Industrial
Realty, Inc.

CORFAC
INTERNATIONAL

Industrial • Commercial • Investment

LOCATION MAP



Google

Map data ©2024 Google Imagery ©2024 Airbus, Landsat / Copernicus, Maxar Technologies

Brian Bratton, SIOR
Vice President
bbratton@kingindustrial.com
404.942.2028

Steve Ratchford, SIOR, CCIM
Senior Vice President
sratchford@kingindustrial.com
404.942.2003

King Industrial
Realty, Inc.

CORFAC
INTERNATIONAL

Industrial • Commercial • Investment

EXCLUSIVELY LISTED BY:

Brian Bratton, SIOR

Vice President

bbratton@kingindustrial.com

404.942.2028

Steve Ratchford, SIOR, CCIM

Senior Vice President

sratchford@kingindustrial.com

404.942.2003

KING Industrial
Realty, Inc.

CORFAC
INTERNATIONAL

Industrial • Commercial • Investment