



## FOR LEASE

# 5701 Greendale Road | Richmond, Virginia 23228

### Property Features

- 22,506 SF Class B, Industrial Warehouse
- Ceiling Height: 20' - 24'
- 3 docks, 1 drive-in
- Office Space: ± 2,000 SF
- Built in 2000, metal construction
- 25 minutes to Richmond International Airport
- 16 free surface parking spaces available
- Available December 1, 2024
- Lease Rate: \$9.75/SF NN

### MORE INFORMATION

**Chris Rice**

804.513.6000

[chrissrice@naidominion.com](mailto:chrissrice@naidominion.com)

**Lewis Little**

804.513.6000

[lewislittle@naidominion.com](mailto:lewislittle@naidominion.com)



7110 Forest Avenue Suite 103 | Richmond, VA 23226 | 804.346.5000 | [www.naidominion.com](http://www.naidominion.com)

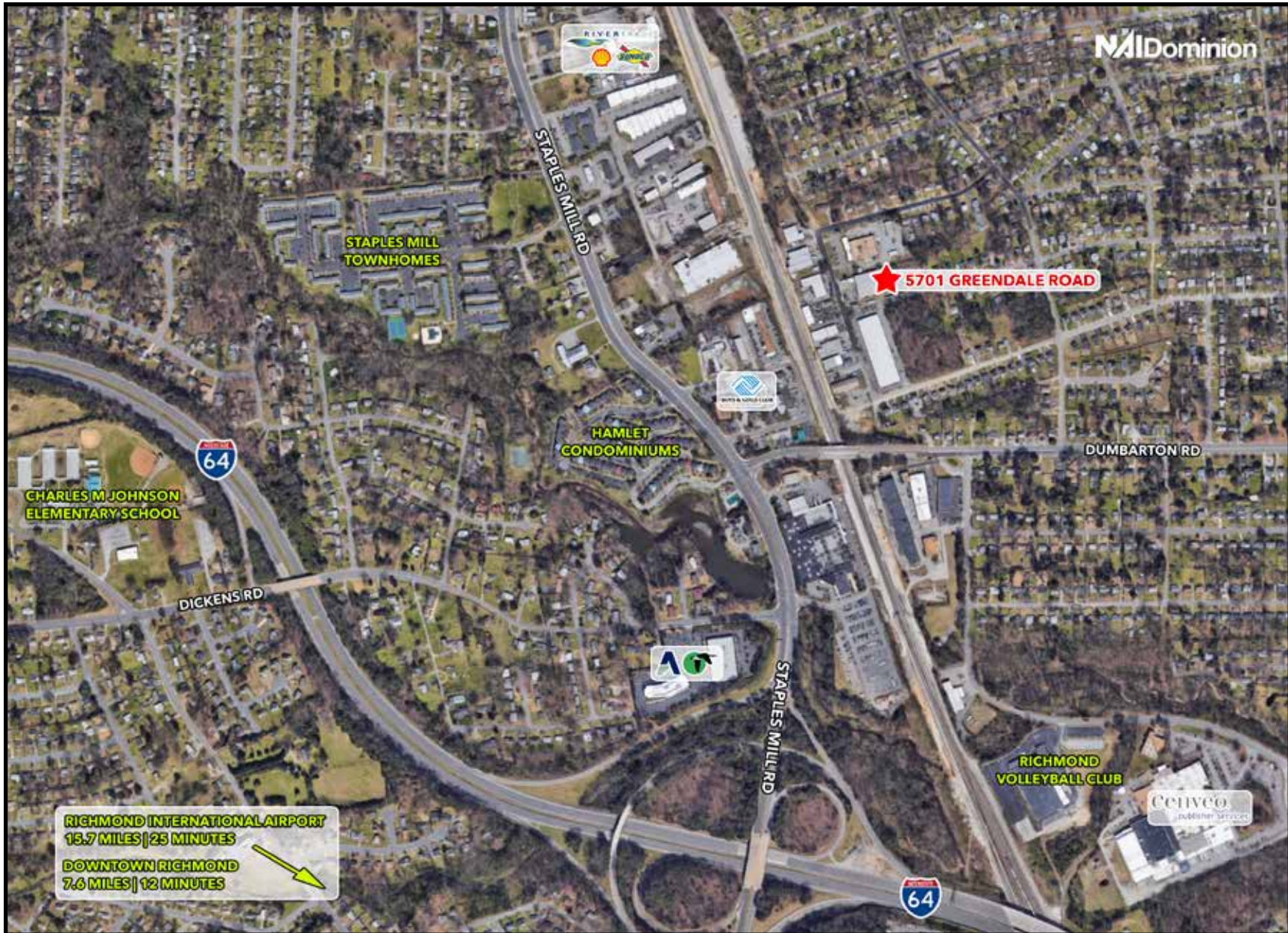
Although the information contained herein was provided by sources believed to be reliable, NAI DOMINION makes no representation, expressed or implied, as to its accuracy and said information is subject to errors, omissions or changes.



**FOR LEASE**

# 5701 Greendale Road

## Area Map

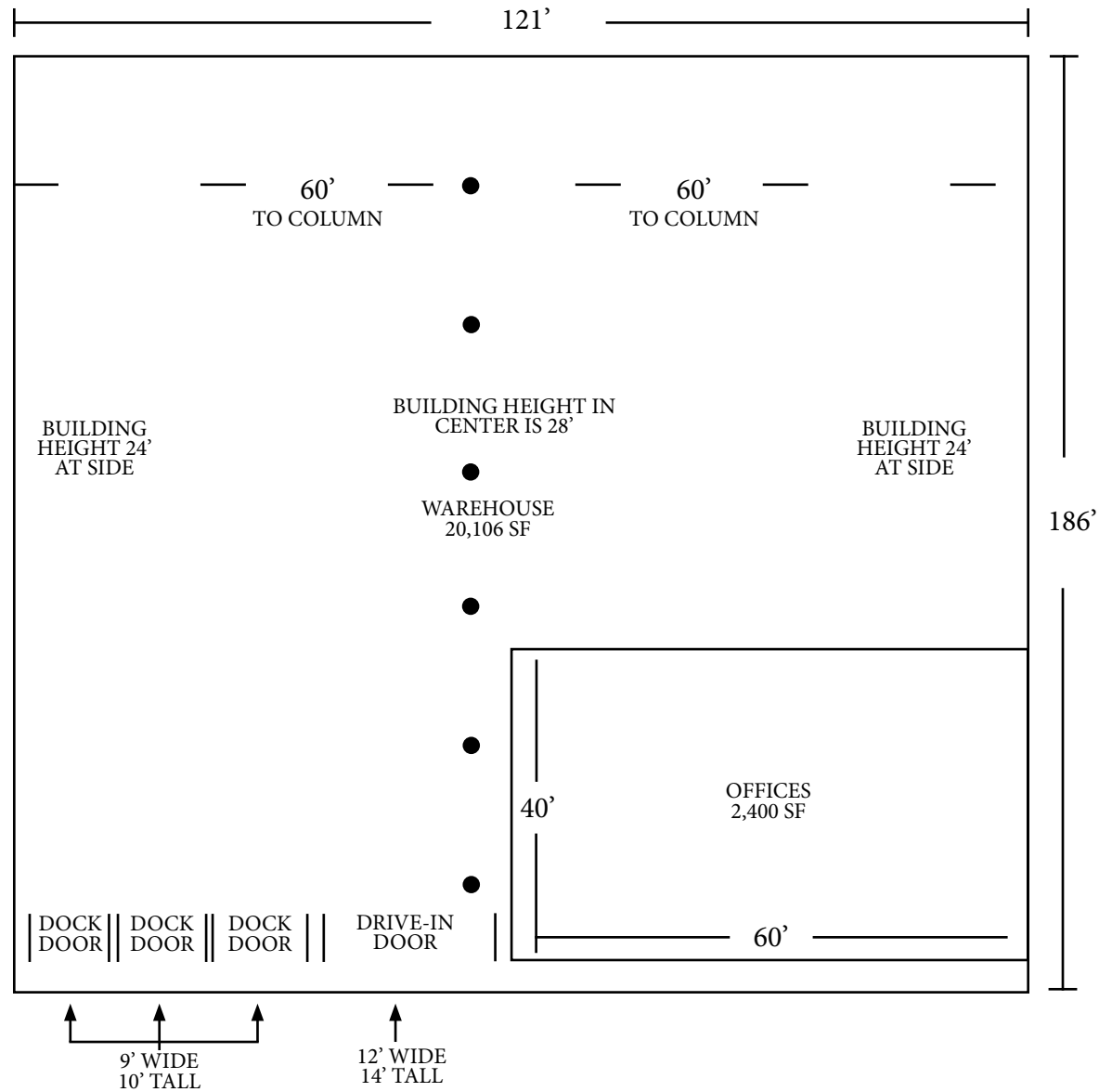


FOR LEASE

# 5701 Greendale Road

# Tenant Floor Plan

TOTAL SQUARE FOOTAGE - 22,506

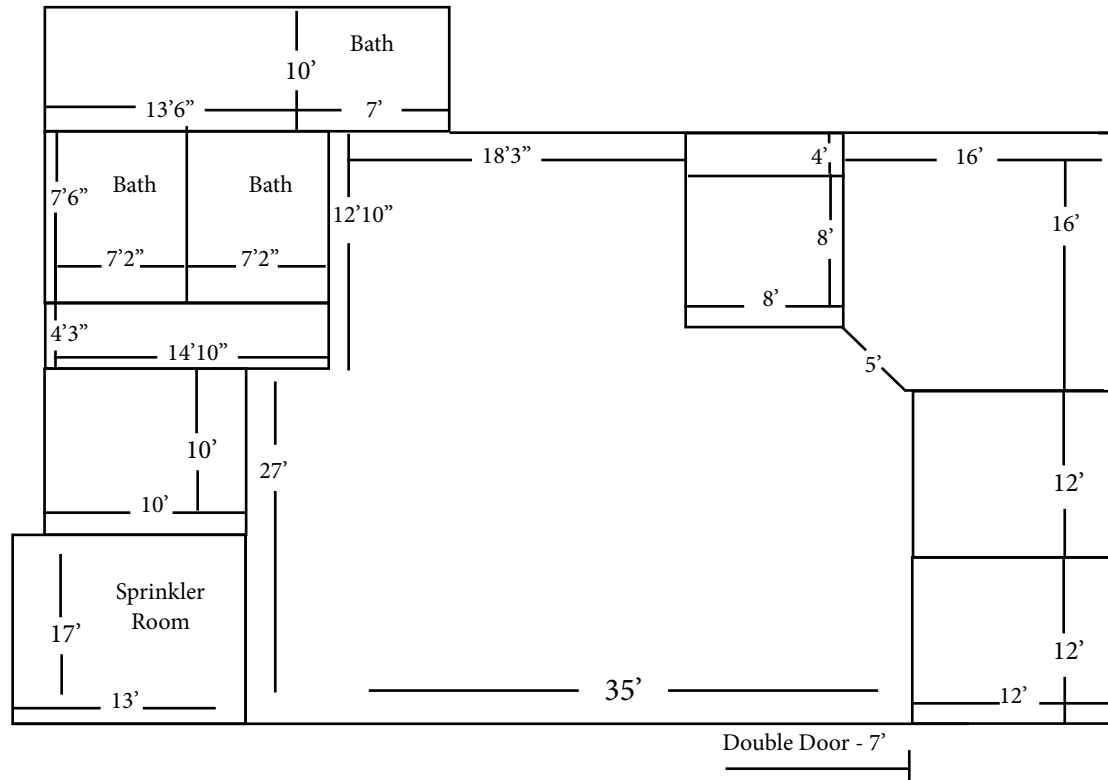


FOR LEASE

# 5701 Greendale Road

# Tenant Floor Plan

OFFICE LAYOUT - 1/8" = 1 Foot





FOR LEASE

5701 Greendale Road

Property Photos

