

WAYLINE

WAYLINE

WELCOME

6711, 6721 + 6731 Columbia Gateway Drive | Columbia, MD
wayline.copt.com



COPT DEFENSE
PROPERTIES

WORKDAYS YOUR WAY

Meet WAYLINE—your all-inclusive workday destination, exclusively available to tenants of 6711, 6721 and 6731 Columbia Gateway Drive.

WAYLINE features modern bohemian design details and a lush lineup of amenities—from flexible conference space and a sweetgreen Outpost, to a yoga lawn and sun drenched terrace.



COLUMBIA GATEWAY

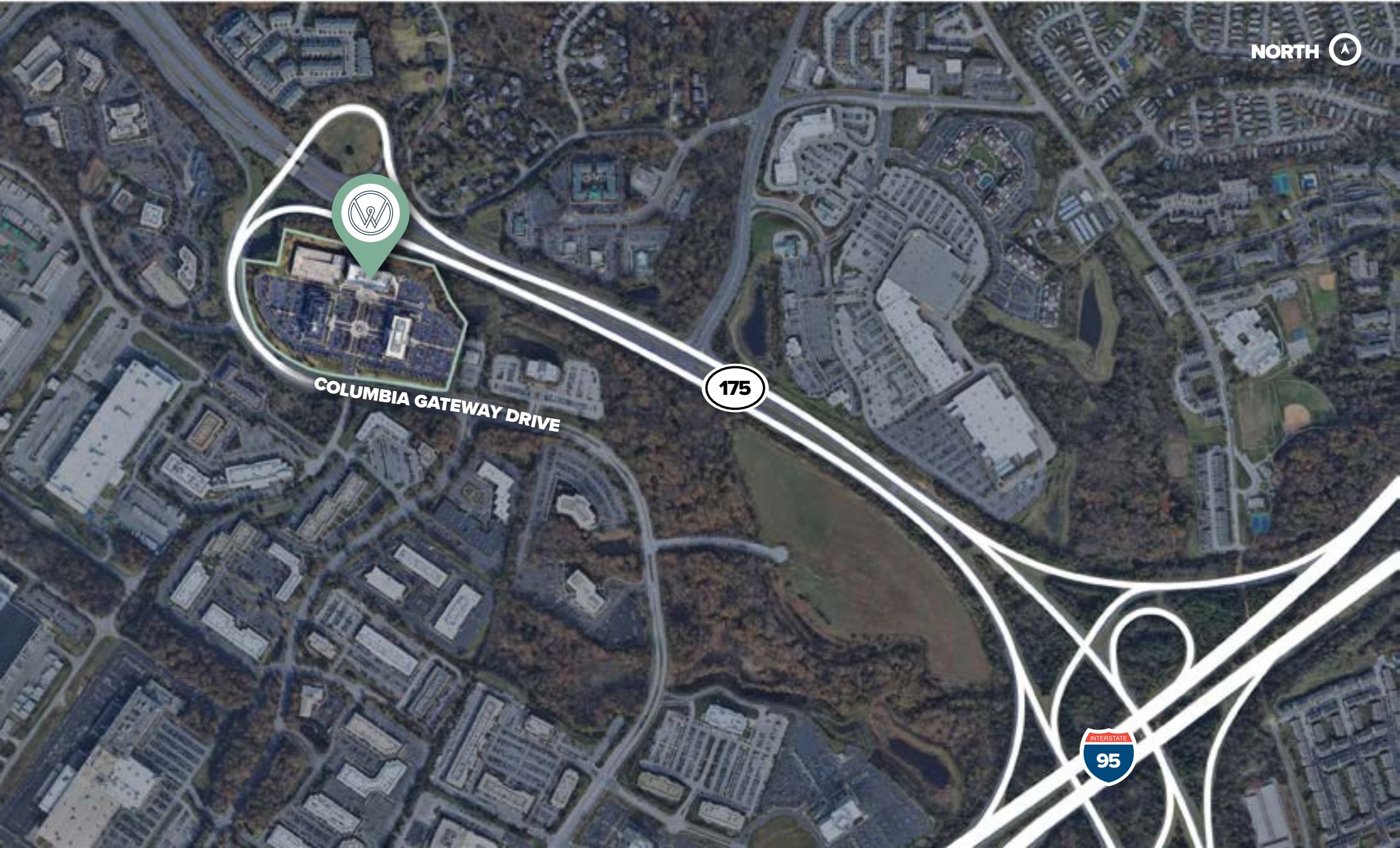
28 Buildings | 2.3M SF

NORTH 



IMMEDIATE ACCESS TO I-95

Located Within 1 Mile of I-95 Entrance + Exit Ramps



NORTH 

COLUMBIA GATEWAY DRIVE

175

INTERSTATE
95

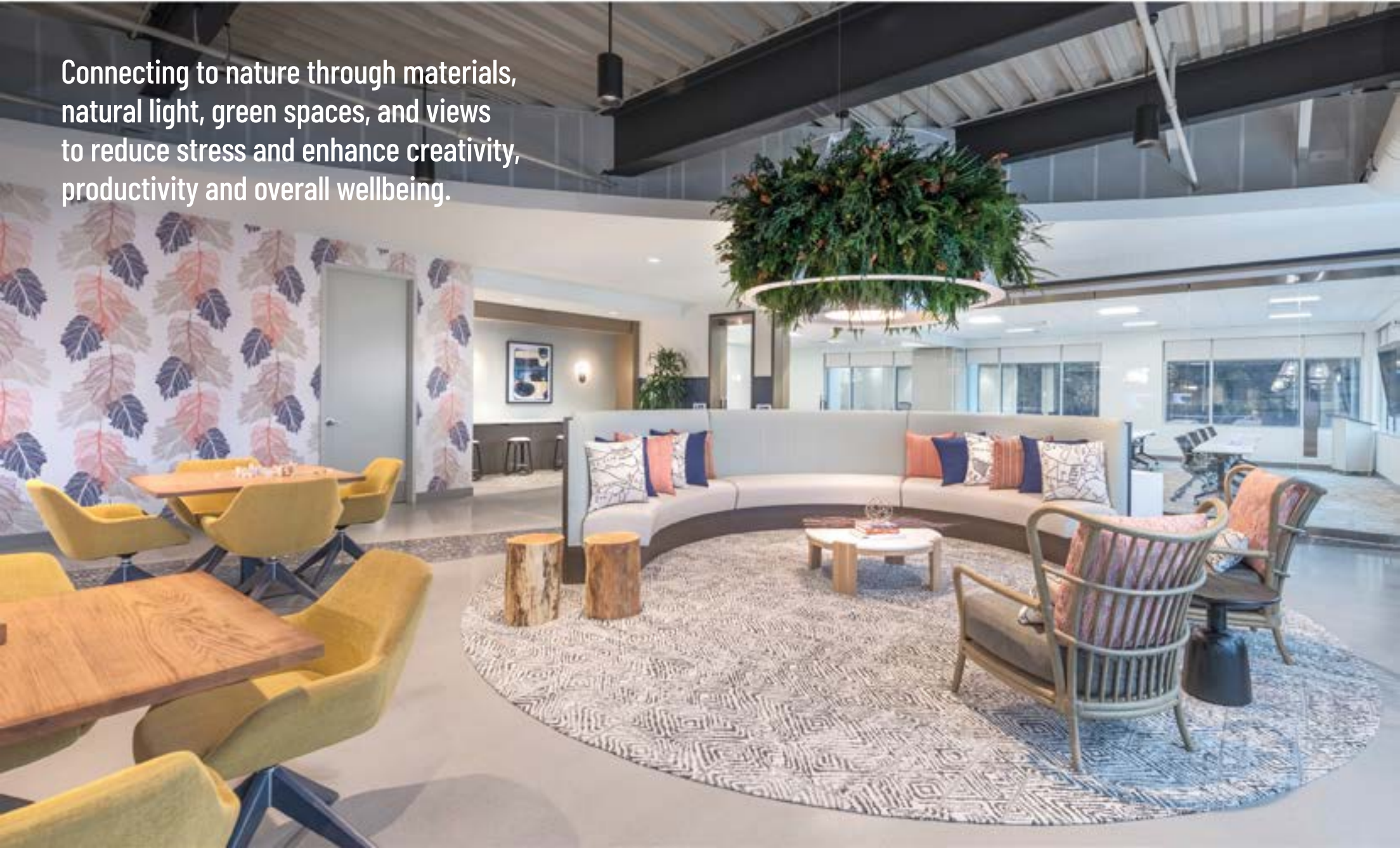
WAYLINE CAMPUS

3 Buildings | 390,100 SF

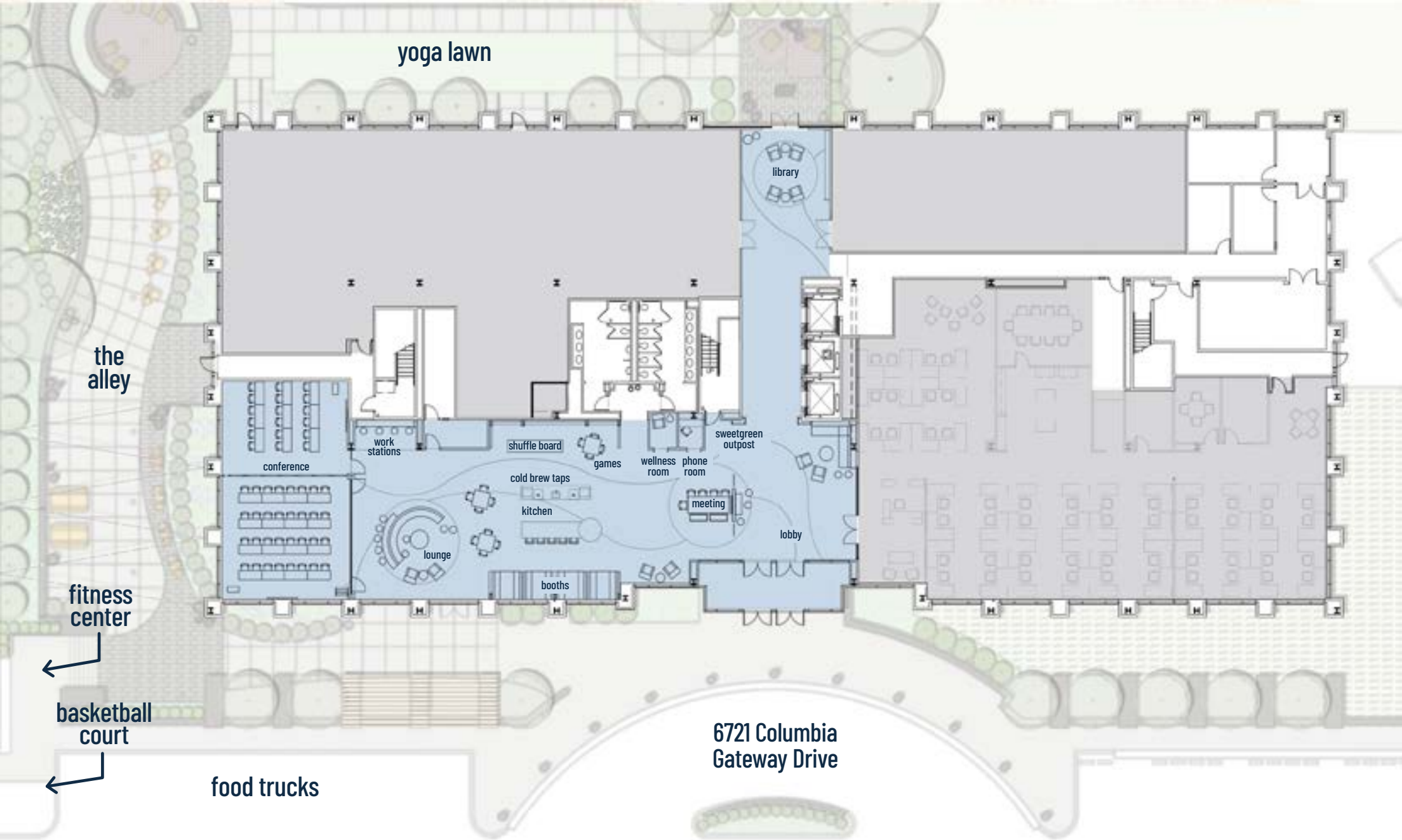


BIOPHILIC DESIGN

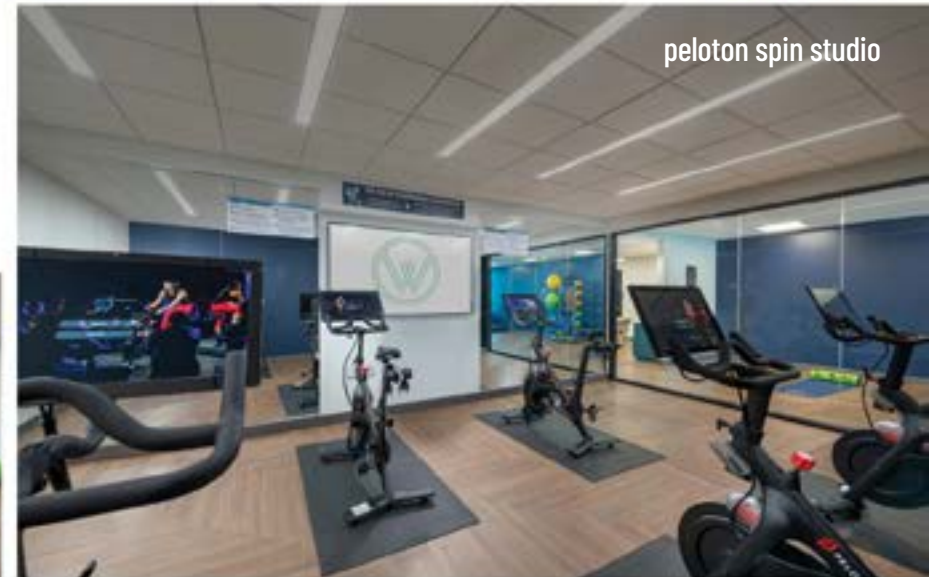
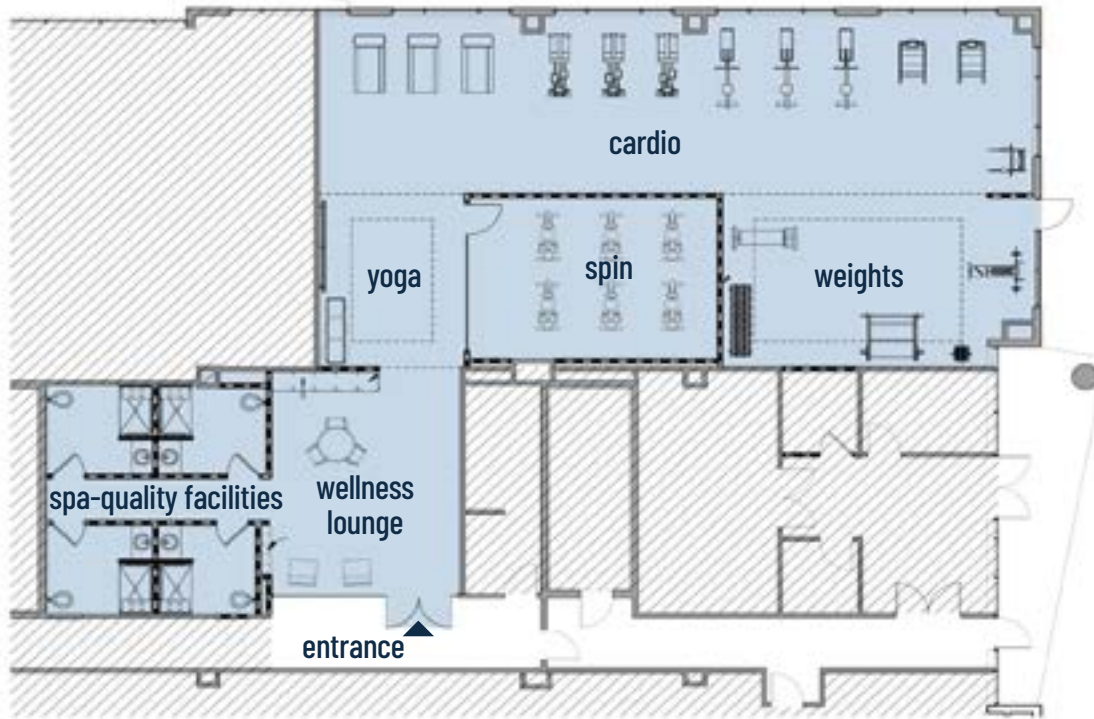
Connecting to nature through materials, natural light, green spaces, and views to reduce stress and enhance creativity, productivity and overall wellbeing.



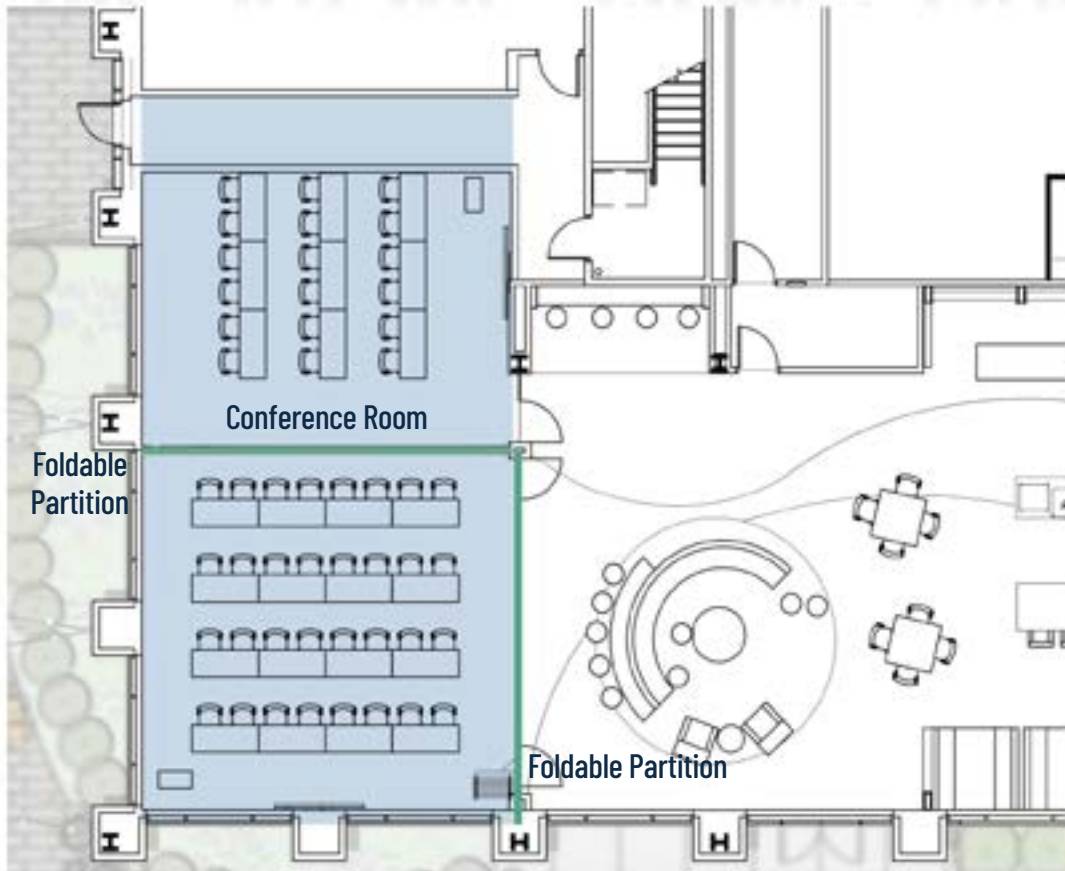
WAYLINE EXPERIENCE



SPA-QUALITY FITNESS CENTER



FLEXIBLE CONFERENCE ROOMS



- Combined 50+ person capacity
- Cisco Room Kit Plus with video conferencing
- 2 large format monitors

COMMUNITY KITCHEN WITH COFFEE, NITRO BREW + GAMES



A VARIETY OF COMMUNAL WORK + SOCIAL SPACES



SWEETGREEN OUTPOST— CONVENIENT, MADE FROM SCRATCH, HEALTHY FOOD DELIVERED DAILY

12

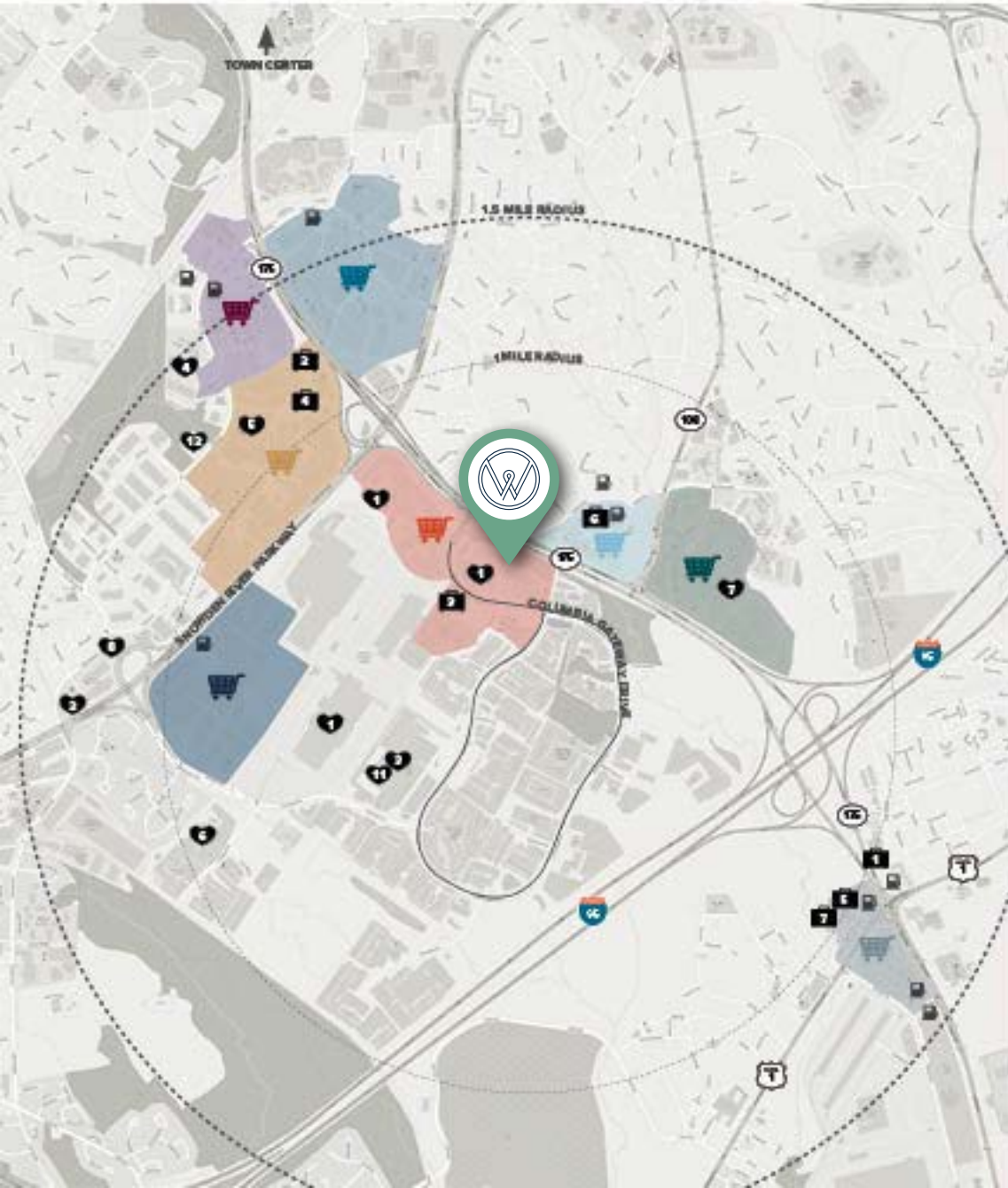


sweetgreen  OUTPOST™



SURROUNDING AMENITIES

70+ Restaurants | 7 Hotels | 1.5 Mile Radius



- Columbia Gateway Retail**
- Abby's Gourmet Deli
 - Aida Bistro & Wine Bar
 - Capital Bank
 - The Columbia Bank
 - Dunkin'
 - Flavors of India
 - Kinder Care Learning Center
 - Rudy's Mediterranean Grill

- Columbia Crossing**
- Bank of America
 - BB&T
 - Big Lots
 - BJ's Restaurant & Brewhouse
 - Bob's Discount Furniture
 - Buffalo Wild Wings
 - BurgerFi
 - The Burger Joint
 - California Tortilla
 - Cava
 - Chipotle Mexican Grill
 - Dick's Sporting Goods
 - Famous Dave's
 - FedEx Office
 - Jimmy John's
 - Jo-Ann Fabric
 - La Madeleine Bakery & Café
 - La-Z-boy
 - Long Horn Steakhouse
 - Maiwand Kabob
 - Mission BBQ
 - Noodles & Co.
 - Nordstrom Rack
 - Old Navy
 - Party City
 - PETCO
 - PNC Bank
 - Red Robin
 - Romano's Macaroni Grill
 - Starbucks
 - Subway
 - Target
 - THB Bagelry + Grill
 - T.J.Maxx
 - Tutti Frutti

- Columbia Restaurant Park**
- Bob Evans
 - McDonald's
 - Olive Garden
 - Royal Taj
 - TGI Fridays

- Gateway Overlook**
- Aldi
 - Best Buy
 - Capital One
 - Costco & Costco Gas
 - Ethan Allen
 - Five Below
 - Golf Galaxy
 - Jersey Mike's
 - Lowe's
 - Massage Envy
 - On The Border
 - The Perfect Pour
 - Road Runner Sports
 - Silver Diner
 - Trader Joe's
 - Ulta
 - Wells Fargo

- Dobbin Road Retail**
- 2nd Ave
 - Advance Auto Parts
 - AT&T
 - Auto Zone
 - Bray & Scarf Appliances and Kitchen
 - Capital One Bank
 - Chick-fil-A
 - Columbia Ale House
 - Destination XL
 - First Watch Café
 - Five Guys Burgers & Fries
 - Frisco Tap House
 - Gamestop
 - Hand & Stone Massage and Facial Spa
 - Lane Bryant
 - M&T Bank

- McDonald's
- MVA
- MyEyeDr
- Nalley Fresh
- Panera Bread
- Pei Wei Asian Diner
- Pie Five Pizza Company
- Potbelly Sandwich Works
- Qdoba
- Quickway Hibachi
- Roggenart Bakery
- Ross Dress for Less
- Sprint
- Starbucks
- Sushi King
- Tropical Smoothies Café
- Walmart
- Wendys

- Snowden Square**
- Bed Bath & Beyond
 - Bertucci's Brick Oven
 - BJ's & BJ's Gas
 - Boston Market
 - DSW
 - Dunkin
 - Hobby Lobby
 - Home Depot
 - Homegoods
 - Marshalls
 - Michaels
 - PetSmart
 - Red Lobster
 - Ruby Tuesday
 - Shell
 - Staples
 - Tower Federal Credit Union
 - United Artists Theatres
 - Verizon Wireless

- Stanford Boulevard Retail**
- Cinco de Mayo
 - The Greene Turtle
 - Indigo Indian Cuisine
 - Katana Sushi & Thai
 - Mango Grove
 - Neo Pizza & Taphouse
 - Nottingham's Tavern

- Riverside Coffee
- Smoothie King
- Stanford Grill
- Texas Roadhouse
- Wegmans

- Route 1 Retail**
- Advanced Auto Parts
 - Cricket
 - Enterprise
 - IHOP
 - Jerry's Subs & Pizza
 - McDonald's
 - MOM's Organic Market
 - Ollie's Bargain Outlet
 - Panda Express
 - Squisitos
 - Starbucks
 - Xfinity

- Hotels**
- 1 Comfort Inn & Suites
 - 2 Courtyard by Marriott
 - 3 Extended Stay America
 - 4 Extended Stay America
 - 5 Holiday Inn
 - 6 Homewood Suites
 - 7 La Quinta Inn & Suites

- Fitness/Recreation**
- 1 COPT FitSpot
 - 2 Curves
 - 3 Earth Treks Climbing Center
 - 4 Gymboree Play & Music
 - 5 Krav Maga
 - 6 Life Time Fitness
 - 7 Gold's Gym
 - 8 My Gym
 - 9 Orangetheory Fitness
 - 10 Planet Fitness
 - 11 SoFive Soccer Center
 - 12 Top Tier Fitness

COLUMBIA GATEWAY AMENITIES

Conferencing | Fitness Centers | Delis + Restaurants | Banks | Child Care



NORTH

- CAFE GATEWAY
- FOOD TRUCKS
- UNIV. TRAINING CENTER
- 3 MI. (APPROX.) WALKING/JOGGING TRAIL
- FOOD TRUCKS
- FOOD TRUCKS
- PCMC AREA
- MARKET DELI
- FOOD TRUCKS
- FITSPOT
- SPORTS TRUCKS CLIMBING
- BASKETBALL COURT
- SOFTBALL COURT
- WHS CAFETERIA
- LE TIME ATHLETIC
- GA THEATRE
- SHOPSIDE SQUARE RETAIL
- WEGMANS
- EXTENDED STAY APARTMENT
- WALKWAY PLAZA PARK
- FOOD INNOVATION CENTER
- ASIA BISTRO
- BASKETBALL COURT
- HUBSPOT
- COURTYARD / MARKET
- ASBY'S DELI
- FOOD TRUCKS
- FITSPOT

COPT AMENITIES

Exclusively Available to COPT Defense Tenants

HubSpot

A contemporary conference center outfitted with all the essentials for events and conferences

- Wifi- and AV-equipped flexible space
- Collaborative seating accommodates 50 people
- Pre-function lounge + catering kitchen
- Outdoor space with fire pit
- Onsite café
- Abundant free parking
- EV charging stations



Working for the Weekday

Signature programming and practical perks curated by COPT Defense, from festive pop-ups to outstanding onsite services and impactful community initiatives



LEASING

Krysta Herring

443.285.5709 | krysta.herring@copt.com

John Hermann

443.285.5711 | john.hermann@copt.com

