

## Harrison Place

919 S Harrison Street  
Fort Wayne, IN 46802



OFFICE/RETAIL

FOR LEASE

## Downtown Office Space Available

Harrison Place is located at the corner of Harrison Street and Wayne Street, within blocks of everything downtown Fort Wayne has to offer. Major recent redevelopment projects in the area include Ash Skyline Plaza, The Landing, Promenade Park, Riverfront at Promenade Park, The Bradley Hotel, and The Pearl. This building has two spaces available for lease. A tenant improvement allowance is negotiable for market rate leases. Parking is available for tenants in the adjacent privately owned parking garage.

## Property Highlights

- ▶ Main level office or retail space available
  - ▶ Suite 100: 2,078 SF
  - ▶ Suite 110: 2,513 SF
- ▶ Private parking garage adjacent to building
- ▶ **FOR LEASE: \$19.00-\$21.00/SF/Yr NNN**
  - ▶ **Suite 100: \$21.00/SF/Yr NNN**
  - ▶ **Suite 110: \$19.00/SF/Yr NNN**

### BRAD STURGES

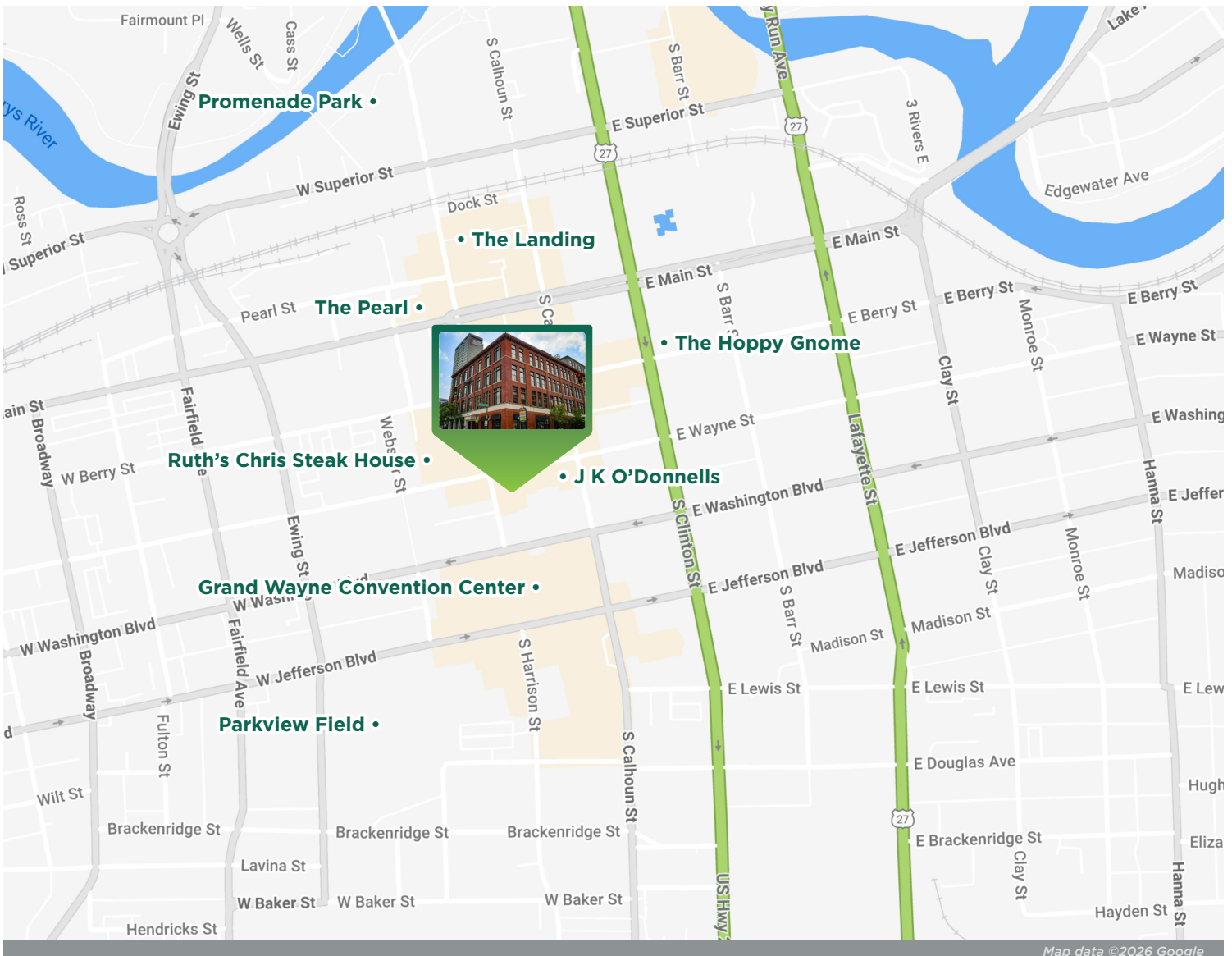
President  
260 424 8448  
brad.sturges@sturgespg.com

### SHELBY WILSON

Broker  
260 424 8448  
shelby.wilson@sturgespg.com



**Harrison Place**  
919 S Harrison Street  
Fort Wayne, IN 46802



Map data ©2026 Google

## Excellent Location

Harrison Place is located within easy walking distance of downtown Fort Wayne's celebrated Ash Skyline Plaza, the Grand Wayne Convention Center, Allen County Courthouse, Citizens Square, popular restaurants, office buildings, and the Fort Wayne Visitors Center. Daytime employees during the week total over 30,000, and the nearby Grand Wayne Convention Center hosts over 315 events per year. The building is also located in the heart of the Harrison Street Corridor, which is a flourishing retail and residential hotbed, from Parkview Field all the way north to the Riverfront. The recently completed projects include The Bradley, the remodeled Randall Lofts, a redevelopment of The Landing district, and Promenade Park at the Riverfront.

### BRAD STURGES

President  
260 424 8448  
brad.sturges@sturgespg.com

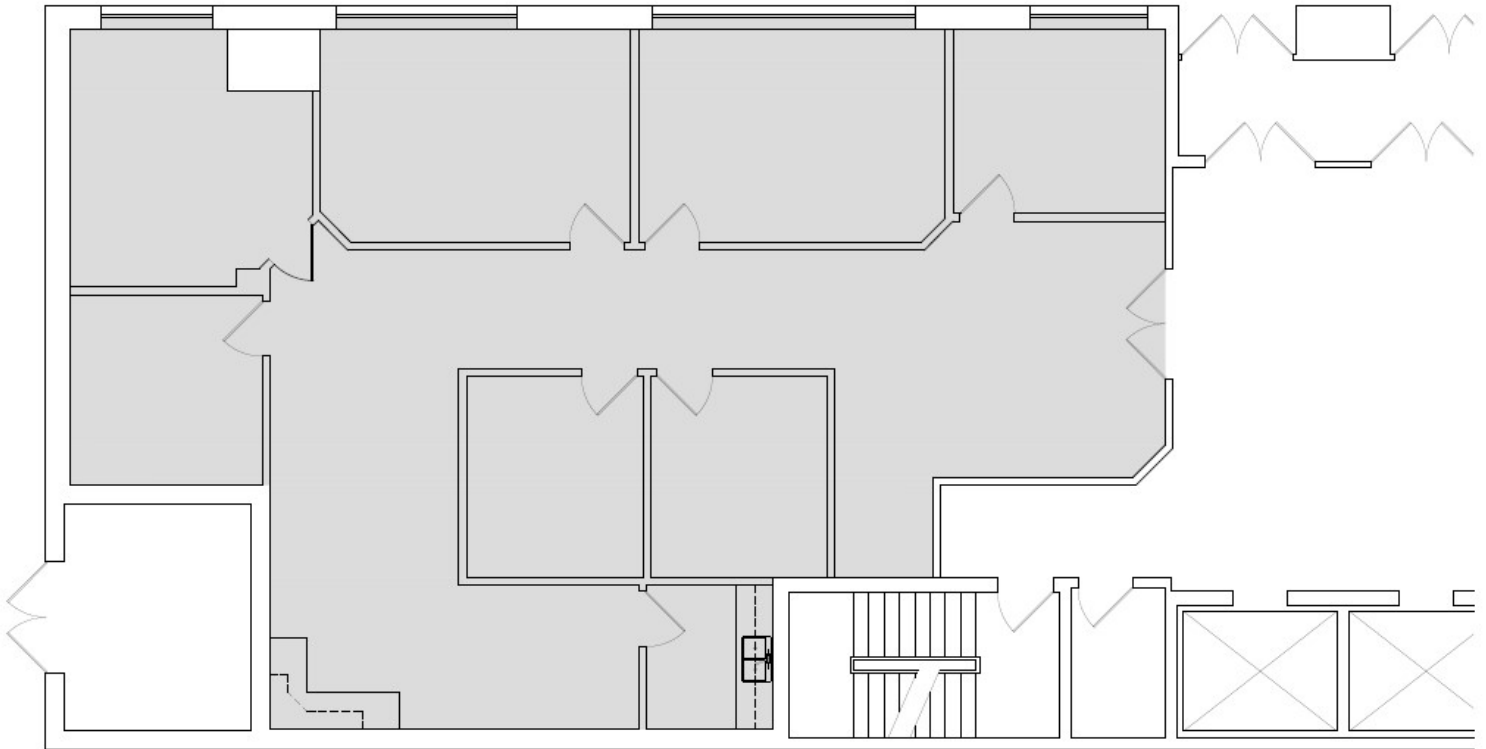
### SHELBY WILSON

Broker  
260 424 8448  
shelby.wilson@sturgespg.com



**Harrison Place**  
919 S Harrison Street  
Fort Wayne, IN 46802

**Suite 100 Available - 2,078 SF**



Floor plan may not be to scale.  
Contact broker for detailed floor plan.

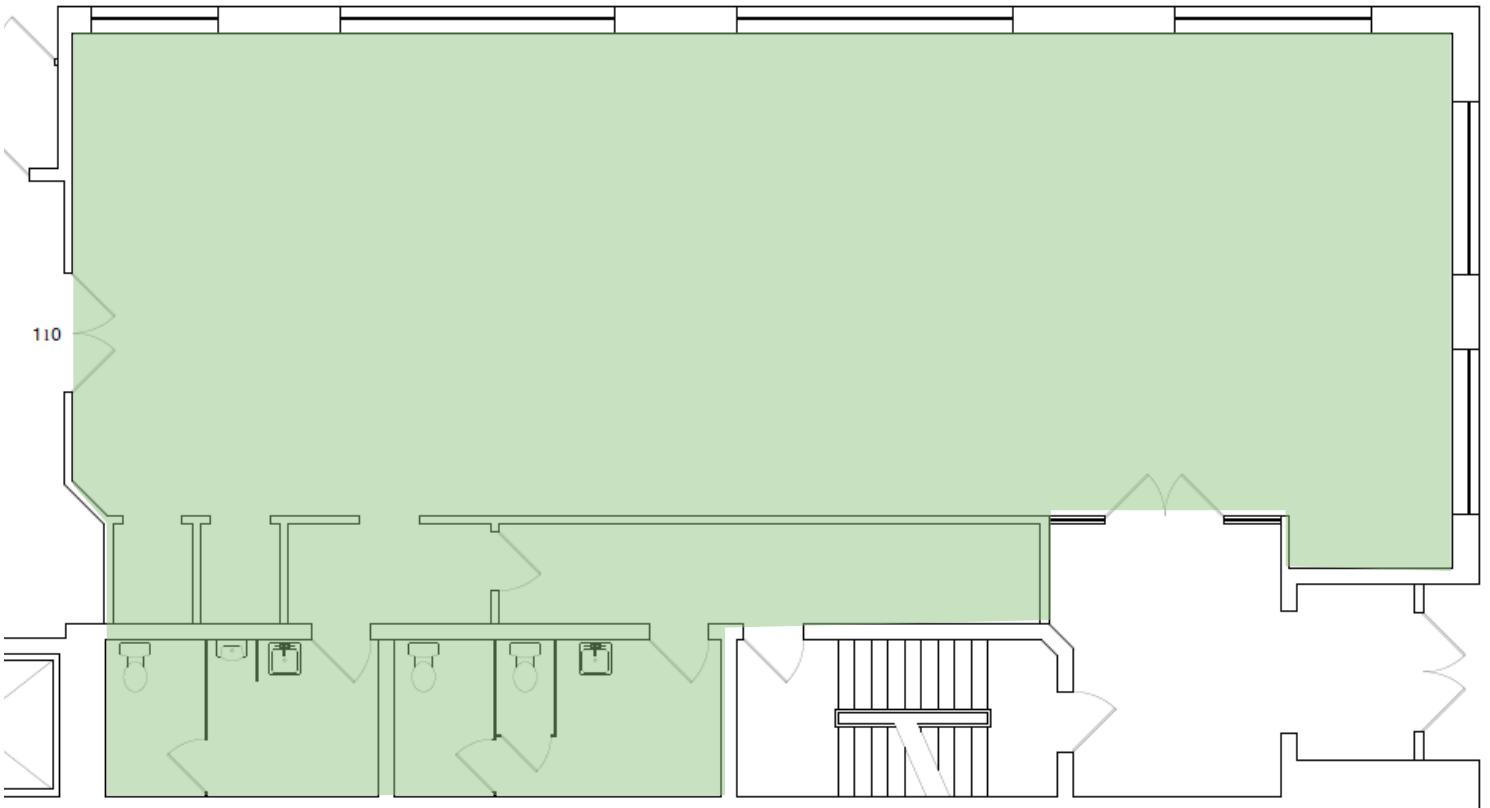
**BRAD STURGES**  
President  
260 424 8448  
brad.sturges@sturgespg.com

**SHELBY WILSON**  
Broker  
260 424 8448  
shelby.wilson@sturgespg.com



**Harrison Place**  
919 S Harrison Street  
Fort Wayne, IN 46802

**Suite 110 Available - 2,513 SF**



Floor plan may not be to scale.  
Contact broker for detailed floor plan.

**BRAD STURGES**  
President  
260 424 8448  
brad.sturges@sturgespg.com

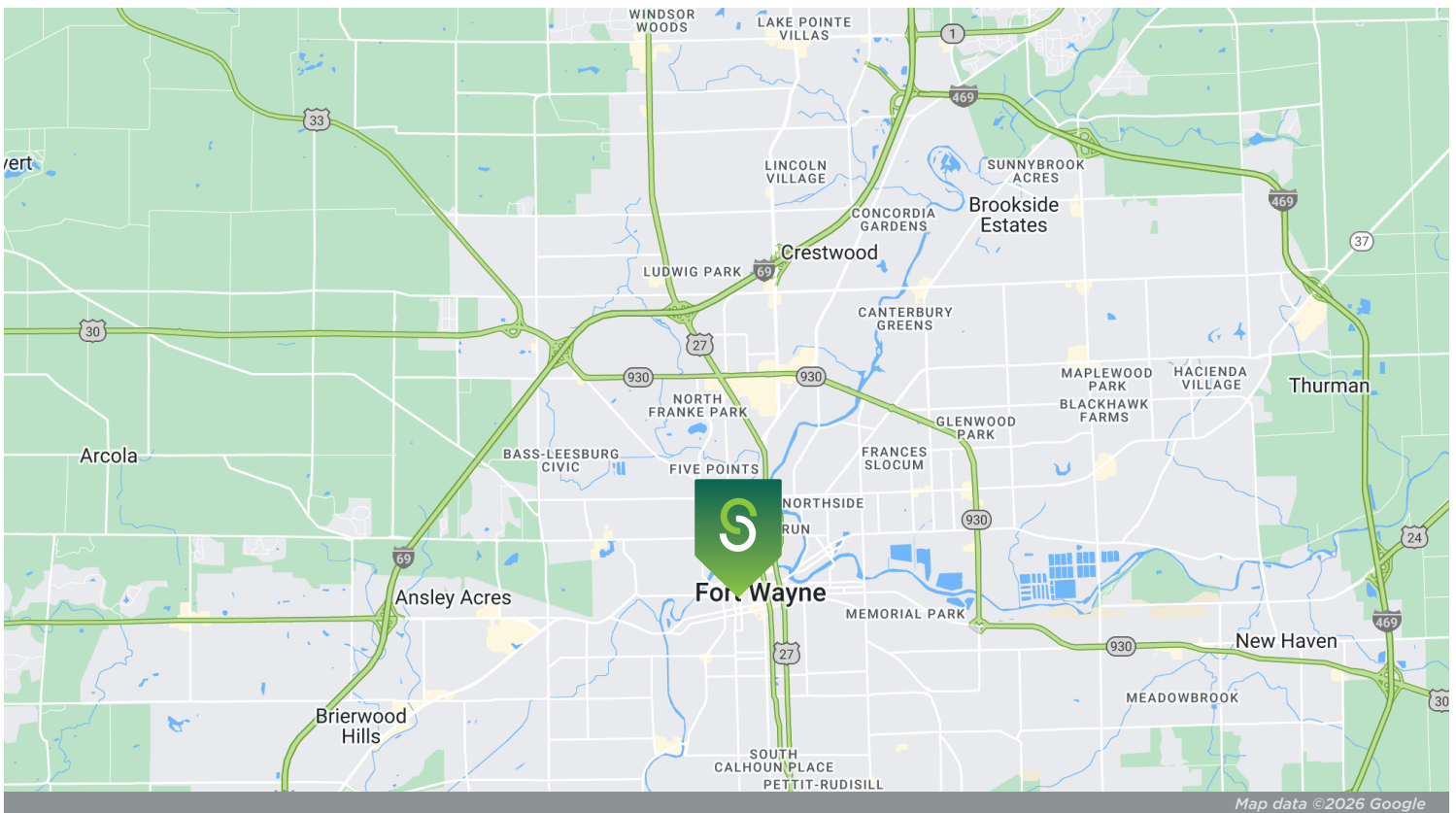
**SHELBY WILSON**  
Broker  
260 424 8448  
shelby.wilson@sturgespg.com



**Harrison Place**  
 919 S Harrison Street  
 Fort Wayne, IN 46802



Parking Garage



Map data ©2026 Google

© 2026 Sturges, LLC. This information has been obtained from sources believed reliable. We have not verified it and make no guarantee, warranty, or representation about it. Any projections, opinions, assumptions, or estimates used are for example only and do not represent the current or future performance of the property. You and your advisors should conduct a careful, independent investigation of the property to determine to your satisfaction the suitability of the property for your needs.

Photos herein are the property of their respective owners and use of these images without the express written consent of the owner is prohibited. Maps used herein are attained via Snazzy Maps, Google Maps, and/or Google Earth, and are therefore the property of Google.

**BRAD STURGES**  
 President  
 260 424 8448  
 brad.sturges@sturgespg.com

**SHELBY WILSON**  
 Broker  
 260 424 8448  
 shelby.wilson@sturgespg.com



**Harrison Place**  
919 S Harrison Street  
Fort Wayne, IN 46802

### PROPERTY INFORMATION

Address	919 S Harrison Street
City, State, Zip	Fort Wayne, IN 46802
County	Allen
Township	Wayne
Parcel Number	02-12-02-457-001.000-074 02-12-02-457-010.000-074



### LEASE INFORMATION

Lease Rate & Type	\$19.00 - \$21.00/SF/Yr NNN
Terms	5 year minimum
Availability	Immediate

### RESPONSIBLE PARTIES

Utilities	Office-Landlord, Retail- Tenant
Lawn & Snow	Office-Landlord, Retail- Tenant
Property Taxes	Office-Landlord, Retail- Tenant
Property Insurance	Office-Landlord, Retail- Tenant
Maintenance & Repairs	Office-Landlord, Retail- Tenant
Common Area	Office-Landlord, Retail- Tenant
Roof & Structure	Landlord
Janitorial	Tenant

### AVAILABLE UNITS

Total Building Area	28,762 SF
Total Available	4,591 RSF
Max Contiguous	2,513 RSF
Units Available	Rate/SF/Yr
• Suite 100	\$21.00
• Suite 110	\$19.00

### UTILITIES

Electric Provider	AEP
Natural Gas Provider	NIPSCO
Water & Sewer Provider	City of Fort Wayne
High Speed Data	2 carrier dual approach fiber (Zayo/Comcast) & Comcast/ Frontier Copper

### BUILDING INFORMATION

Property Type	Office
Year Built	1912
# of Stories	5
Construction Type	Concrete/Masonry
Roof	Membrane
Heating	Boiler
A/C	Cooling tower
Sprinkler	Yes
Elevators	2
Signage	Interior directory signage

### SITE DATA

Site Acreage	0.14 AC
Zoning	DC - Downtown core
Parking	Parking garage on site

### ADDITIONAL INFORMATION

- Two suites remaining - office or retail
- Private parking garage adjacent to building

#### BRAD STURGES

President  
260 424 8448  
brad.sturges@sturgespg.com

#### SHELBY WILSON

Broker  
260 424 8448  
shelby.wilson@sturgespg.com