

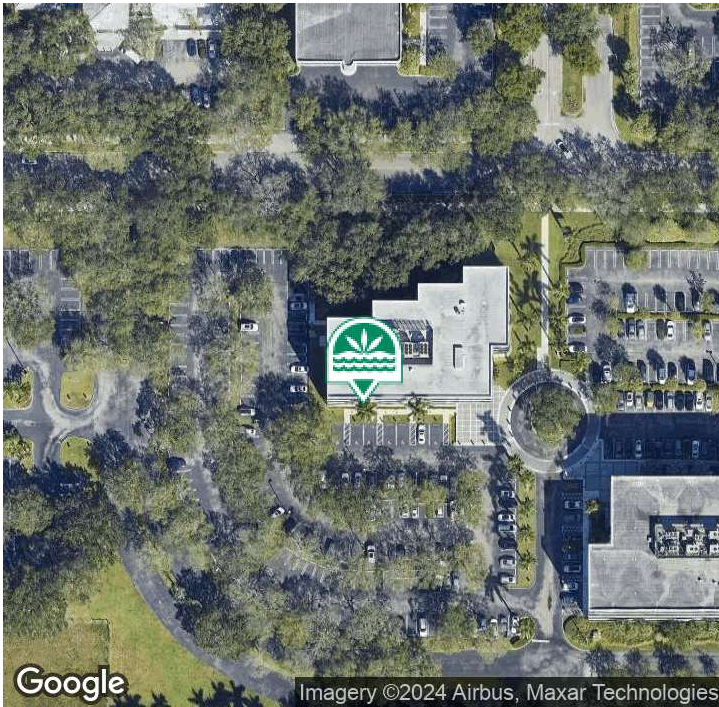
Office Space For Lease

## Governors Square: Spessard Holland Building

8000 Governors Square Blvd.  
Miami Lakes, FL 33016



### SUITE 200



#### PROPERTY DESCRIPTION

Spessard Holland is a 4-story multi-tenant building overlooking Graham Dairy Lake in Miami Lakes Business Park West. Located near the entrance of the business park, this building offers the perfect business location for employees to commute to work and take advantage of the major amenities of the park. Amenities include restaurants, daycare facilities, and Miami Lakes Picnic Park West, all within walking distance of the business park. Parking is available at 4/1000 SF at no charge.

#### OFFERING SUMMARY

Lease Rate:	\$21.50 SF/yr (NNN)
Cam/Taxes:	\$11.932 / \$2.27
Available SF:	3,574 SF
Building Size:	53,115 SF

For More Information Contact:

**Philip Wyllie**

Director of Leasing

954.257.7953

philipw@grahamcos.com

Office Space For Lease

## Governors Square: Spessard Holland Building

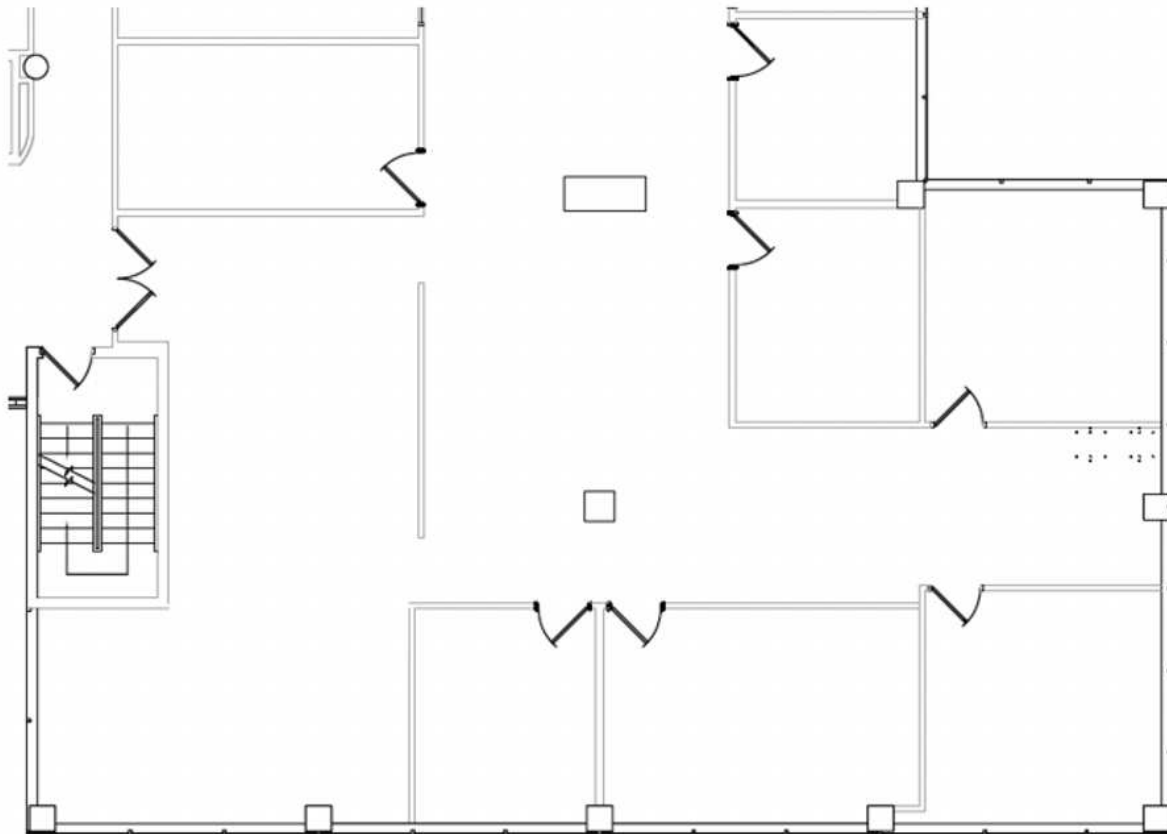
8000 Governors Square Blvd.

Miami Lakes, FL 33016



### SUITE 200 FLOOR PLAN

Spessard # 200



For More Information Contact:

**Philip Wyllie**

Director of Leasing

954.257.7953

philipw@grahamcos.com



Office Space For Lease

## Governors Square: Spessard Holland Building

8000 Governors Square Blvd.  
Miami Lakes, FL 33016



### ADDITIONAL PHOTOS



For More Information Contact:

**Philip Wyllie**

Director of Leasing

954.257.7953

[philipw@grahamcos.com](mailto:philipw@grahamcos.com)



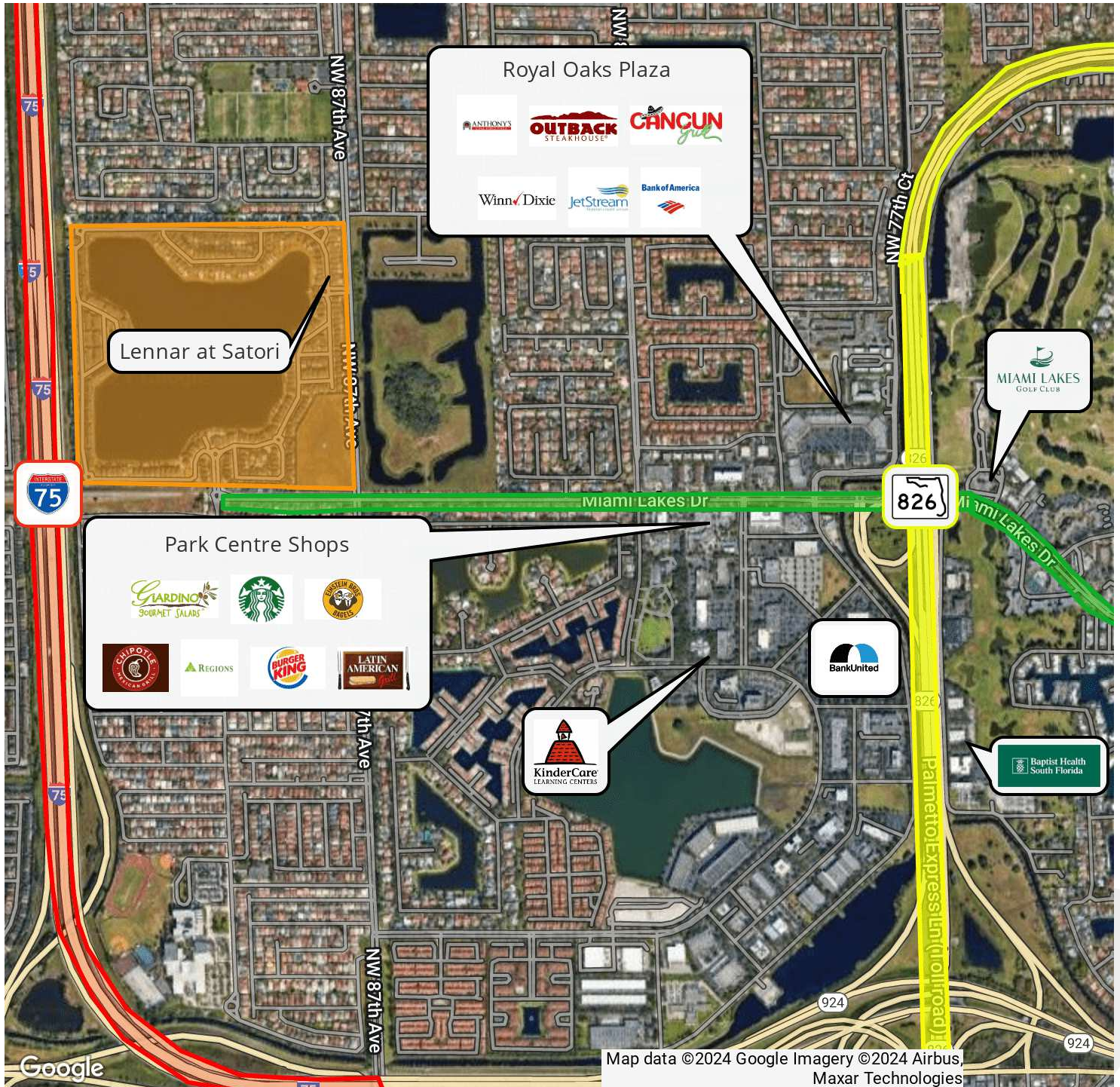
Office Space For Lease

## Governors Square: Spessard Holland Building

8000 Governors Square Blvd.  
Miami Lakes, FL 33016



### RETAILER MAP BUSINESS PARK WEST



For More Information Contact:

**Philip Wyllie**

Director of Leasing

954.257.7953

philipw@grahamcos.com