



±34,864  
Students

UTSA Park West  
Athletics Complex  
Track & Field Complex

Public  
Storage

**SITE**  
**±1.614 AC**

Hausman Pass

W Hausman Rd

# LAND FOR SALE

SWQ of Loop 1604 &  
W Hausman Rd in  
Northwest San Antonio

±1.614 Acres  
Available



**ERIC WEISS**

210-215-5086 CELL  
ERIC@4MREALTY.COM

**MICHAEL WEISS**

210-215-5001 CELL  
MIKE@4MREALTY.COM

**NICK PRATER**

210-559-4018 CELL  
NICK@4MREALTY.COM

## LOCATION

NEC of Hausman Rd & Hausman Pass, just east of Loop 1604 in San Antonio, Texas 78249

## PROPERTY HIGHLIGHTS

- 1.614-acre tract
- 1.37 net usable
- Zoned C3
- Detention in place
- Property is located across from the Baptist Neighborhood Hospital and in close proximity to the University of Texas at San Antonio (UTSA) with nearly 34,864 students enrolled
- Louis D Brandeis High School is located just south of the site with 2,777 students enrolled
- Great demographics with a population of 11,815 and an average household income of \$127,047 within one mile

## DEMOGRAPHIC SNAPSHOT

	3 mi	5 mi
2024 Population	87,201	215,582
2029 Projected Pop.	90,749	216,382
Average HH Income	\$116,051	\$109,711

## TRAFFIC COUNTS

Hausman Rd: 23,949 VPD (TXDOT '23)

Loop 1604: 23,949 VPD (TXDOT '23)



WWW.4MREALTY.COM

**Eric Weiss**

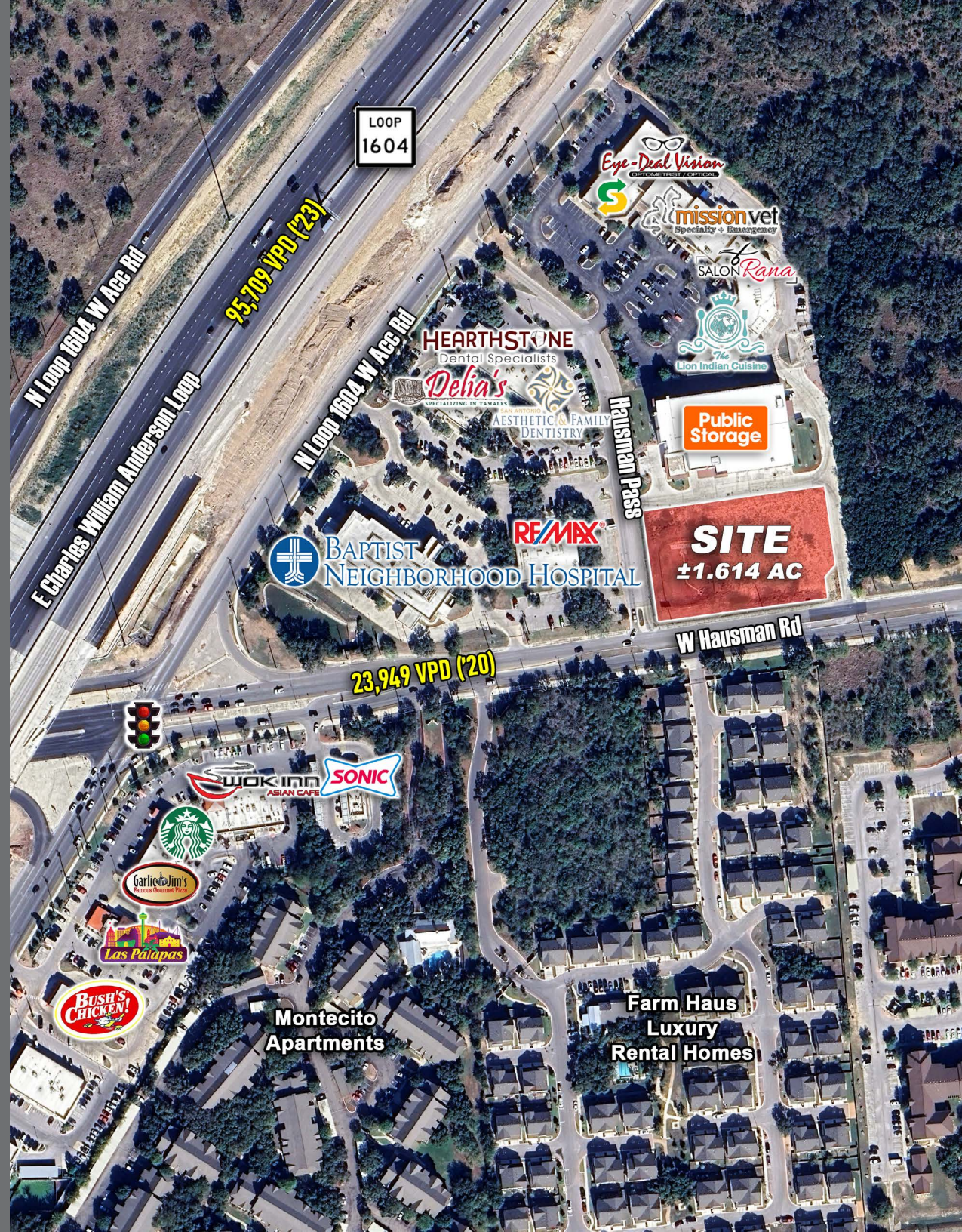
210.215.5086

**Michael Weiss**

210.215.5001

**Nick Prater**

210.559.4018



# DRONE IMAGES



LOOKING NORTHEAST



LOOKING SOUTHEAST



LOOKING SOUTHWEST



LOOKING NORTHWEST

# SITE AERIAL



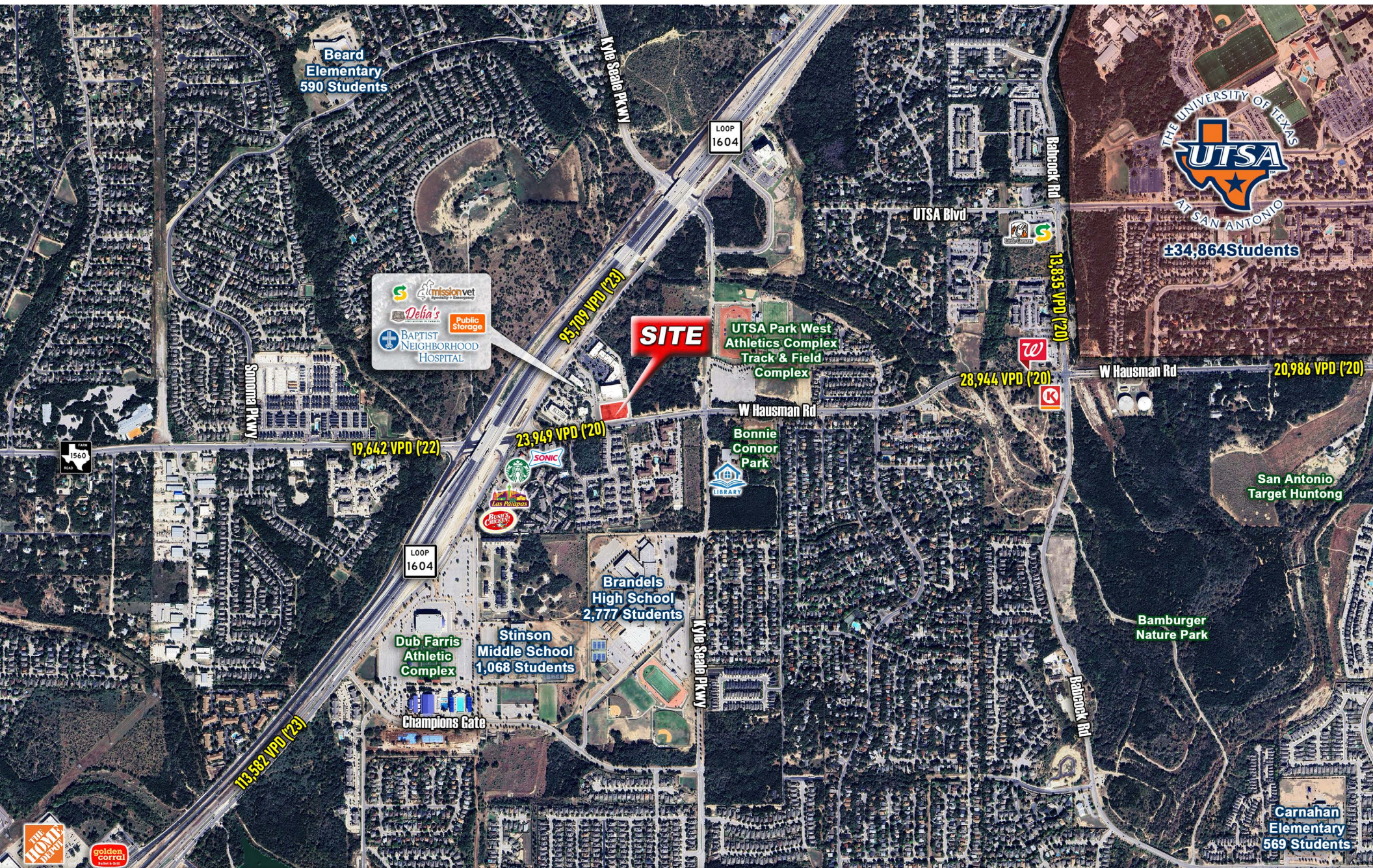
**Eric Weiss** | 210-215-5086  
eric@4mrealty.com

**Michael Weiss** | 210-215-5001  
mike@4mrealty.com

**Nick Prater** | 210-559-4018  
nick@4mrealty.com

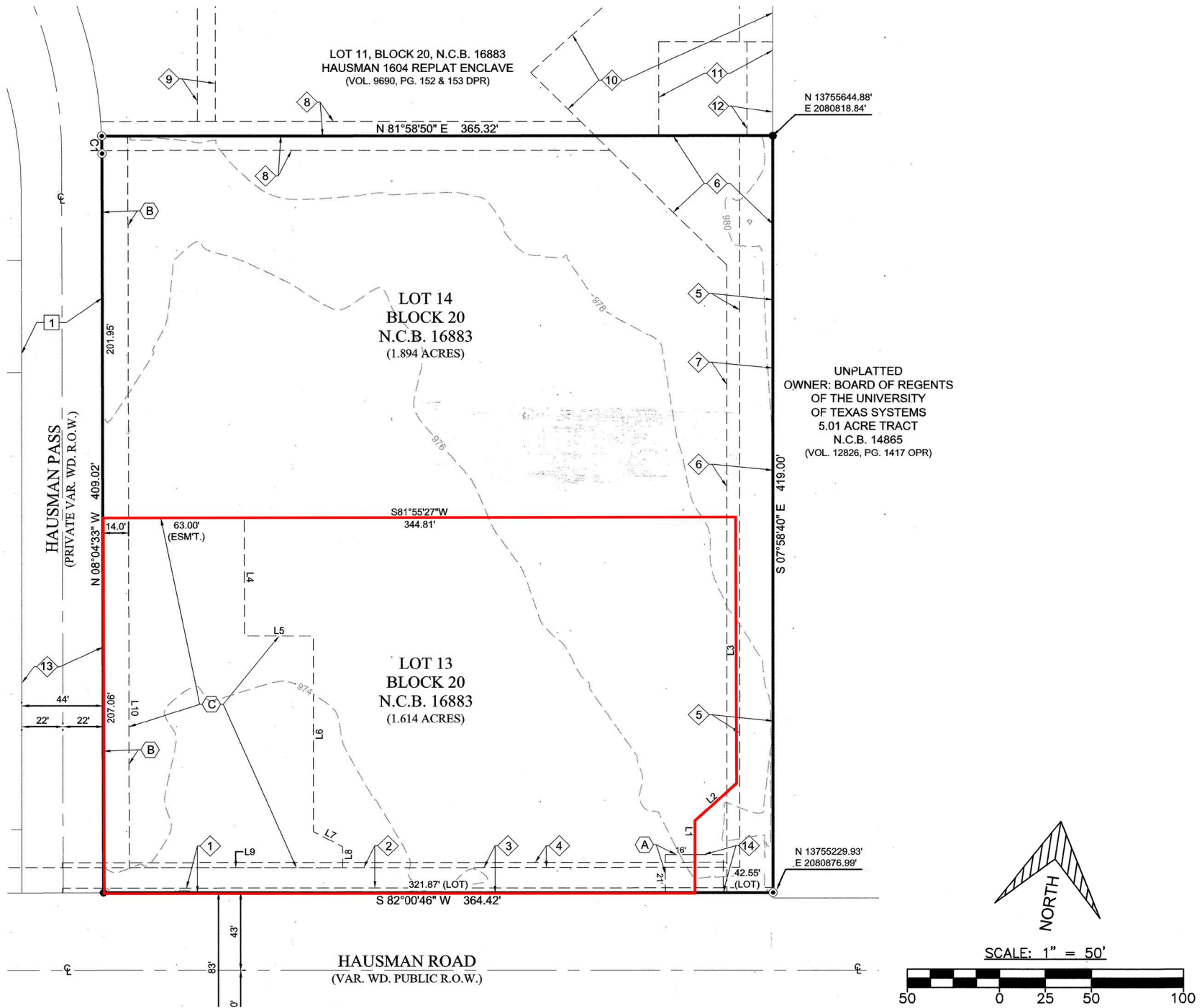
 **4M Realty**  
COMPANY

# INTERSECTION AERIAL



The map displays the proposed site for a new UTSA campus, marked with a red 'SITE' label and a white arrow. The site is located near the intersection of Loop 1604 and W Hausman Rd. The map is overlaid with numerous logos of local businesses, schools, and landmarks. Key locations include:

- UTSA Logo:** 34,864 Students
- UTSA Park West Athletics Complex Track & Field Complex**
- UTSA Blvd**
- W Hausman Rd**
- Loop 1604**
- Major Roads:** I-10, I-37, I-835, I-491, I-490, I-495, I-496, I-497, I-498, I-499, I-500, I-501, I-502, I-503, I-504, I-505, I-506, I-507, I-508, I-509, I-510, I-511, I-512, I-513, I-514, I-515, I-516, I-517, I-518, I-519, I-520, I-521, I-522, I-523, I-524, I-525, I-526, I-527, I-528, I-529, I-530, I-531, I-532, I-533, I-534, I-535, I-536, I-537, I-538, I-539, I-540, I-541, I-542, I-543, I-544, I-545, I-546, I-547, I-548, I-549, I-550, I-551, I-552, I-553, I-554, I-555, I-556, I-557, I-558, I-559, I-560, I-561, I-562, I-563, I-564, I-565, I-566, I-567, I-568, I-569, I-570, I-571, I-572, I-573, I-574, I-575, I-576, I-577, I-578, I-579, I-580, I-581, I-582, I-583, I-584, I-585, I-586, I-587, I-588, I-589, I-590, I-591, I-592, I-593, I-594, I-595, I-596, I-597, I-598, I-599, I-600, I-601, I-602, I-603, I-604, I-605, I-606, I-607, I-608, I-609, I-610, I-611, I-612, I-613, I-614, I-615, I-616, I-617, I-618, I-619, I-620, I-621, I-622, I-623, I-624, I-625, I-626, I-627, I-628, I-629, I-630, I-631, I-632, I-633, I-634, I-635, I-636, I-637, I-638, I-639, I-640, I-641, I-642, I-643, I-644, I-645, I-646, I-647, I-648, I-649, I-650, I-651, I-652, I-653, I-654, I-655, I-656, I-657, I-658, I-659, I-660, I-661, I-662, I-663, I-664, I-665, I-666, I-667, I-668, I-669, I-670, I-671, I-672, I-673, I-674, I-675, I-676, I-677, I-678, I-679, I-680, I-681, I-682, I-683, I-684, I-685, I-686, I-687, I-688, I-689, I-690, I-691, I-692, I-693, I-694, I-695, I-696, I-697, I-698, I-699, I-700, I-701, I-702, I-703, I-704, I-705, I-706, I-707, I-708, I-709, I-710, I-711, I-712, I-713, I-714, I-715, I-716, I-717, I-718, I-719, I-720, I-721, I-722, I-723, I-724, I-725, I-726, I-727, I-728, I-729, I-730, I-731, I-732, I-733, I-734, I-735, I-736, I-737, I-738, I-739, I-740, I-741, I-742, I-743, I-744, I-745, I-746, I-747, I-748, I-749, I-750, I-751, I-752, I-753, I-754, I-755, I-756, I-757, I-758, I-759, I-760, I-761, I-762, I-763, I-764, I-765, I-766, I-767, I-768, I-769, I-770, I-771, I-772, I-773, I-774, I-775, I-776, I-777, I-778, I-779, I-780, I-781, I-782, I-783, I-784, I-785, I-786, I-787, I-788, I-789, I-790, I-791, I-792, I-793, I-794, I-795, I-796, I-797, I-798, I-799, I-800, I-801, I-802, I-803, I-804, I-805, I-806, I-807, I-808, I-809, I-810, I-811, I-812, I-813, I-814, I-815, I-816, I-817, I-818, I-819, I-820, I-821, I-822, I-823, I-824, I-825, I-826, I-827, I-828, I-829, I-830, I-831, I-832, I-833, I-834, I-835, I-836, I-837, I-838, I-839, I-840, I-841, I-842, I-843, I-844, I-845, I-846, I-847, I-848, I-849, I-850, I-851, I-852, I-853, I-854, I-855, I-856, I-857, I-858, I-859, I-860, I-861, I-862, I-863, I-864, I-865, I-866, I-867, I-868, I-869, I-870, I-871, I-872, I-873, I-874, I-875, I-876, I-877, I-878, I-879, I-880, I-881, I-882, I-883, I-884, I-885, I-886, I-887, I-888, I-889, I-890, I-891, I-892, I-893, I-894, I-895, I-896, I-897, I-898, I-899, I-900, I-901, I-902, I-903, I-904, I-905, I-906, I-907, I-908, I-909, I-910, I-911, I-912, I-913, I-914, I-915, I-916, I-917, I-918, I-919, I-920, I-921, I-922, I-923, I-924, I-925, I-926, I-927, I-928, I-929, I-930, I-931, I-932, I-933, I-934, I-935, I-936, I-937, I-938, I-939, I-940, I-941, I-942, I-943, I-944, I-945, I-946, I-947, I-948, I-949, I-950, I-951, I-952, I-953, I-954, I-955, I-956, I-957, I-958, I-959, I-960, I-961, I-962, I-963, I-964, I-965, I-966, I-967, I-968, I-969, I-970, I-971, I-972, I-973, I-974, I-975, I-976, I-977, I-978, I-979, I-980, I-981, I-982, I-983, I-984, I-985, I-986, I-987, I-988, I-989, I-990, I-991, I-992, I-993, I-994, I-995, I-996, I-997, I-998, I-999, I-1000, I-1001, I-1002, I-1003, I-1004, I-1005, I-1006, I-1007, I-1008, I-1009, I-1010, I-1011, I-1012, I-1013, I-1014, I-1015, I-1016, I-1017, I-1018, I-1019, I-1020, I-1021, I-1022, I-1023, I-1024, I-1025, I-1026, I-1027, I-1028, I-1029, I-1030, I-1031, I-1032, I-1033, I-1034, I-1035, I-1036, I-1037, I-1038, I-1039, I-1040, I-1041, I-1042, I-1043, I-1044, I-1045, I-1046, I-1047, I-1048, I-1049, I-1050, I-1051, I-1052, I-1053, I-1054, I-1055, I-1056, I-1057, I-1058, I-1059, I-1060, I-1061, I-1062, I-1063, I-1064, I-1065, I-1066, I-1067, I-1068, I-1069, I-1070, I-1071, I-1072, I-1073, I-1074, I-1075, I-1076, I-1077, I-1078, I-1079, I-1080, I-1081, I-1082, I-1083, I-1084, I-1085, I-1086, I-1087, I-1088, I-1089, I-1090, I-1091, I-1092, I-1093, I-1094, I-1095, I-1096, I-1097, I-1098, I-1099, I-1100, I-1101, I-1102, I-1103, I-1104, I-1105, I-1106, I-1107, I-1108, I-110





## Information About Brokerage Services

*Texas law requires all real estate license holders to give the following information about brokerage services to prospective buyers, tenants, sellers and landlords.*

2-10-2025



### TYPES OF REAL ESTATE LICENSE HOLDERS:

A **BROKER** is responsible for all brokerage activities, including acts performed by sales agents sponsored by the broker.

A **SALES AGENT** must be sponsored by a broker and works with clients on behalf of the broker.

### A BROKER'S MINIMUM DUTIES REQUIRED BY LAW (A client is the person or party that the broker represents):

- Put the interests of the client above all others, including the broker's own interests;
- Inform the client of any material information about the property or transaction received by the broker;
- Answer the client's questions and present any offer to or counter-offer from the client; and
- Treat all parties to a real estate transaction honestly and fairly.

### A LICENSE HOLDER CAN REPRESENT A PARTY IN A REAL ESTATE TRANSACTION:

**AS AGENT FOR OWNER (SELLER/LANDLORD):** The broker becomes the property owner's agent through an agreement with the owner, usually in a written listing to sell or property management agreement. An owner's agent must perform the broker's minimum duties above and must inform the owner of any material information about the property or transaction known by the agent, including information disclosed to the agent or subagent by the buyer or buyer's agent. **An owner's agent fees are not set by law and are fully negotiable.**

**AS AGENT FOR BUYER/TENANT:** The broker becomes the buyer/tenant's agent by agreeing to represent the buyer, usually through a written representation agreement. A buyer's agent must perform the broker's minimum duties above and must inform the buyer of any material information about the property or transaction known by the agent, including information disclosed to the agent by the seller or seller's agent. **A buyer/tenant's agent fees are not set by law and are fully negotiable.**

**AS AGENT FOR BOTH - INTERMEDIARY:** To act as an intermediary between the parties the broker must first obtain the written agreement of *each party* to the transaction. The written agreement must state who will pay the broker and, in conspicuous bold or underlined print, set forth the broker's obligations as an intermediary. A broker who acts as an intermediary:

- Must treat all parties to the transaction impartially and fairly;
- May, with the parties' written consent, appoint a different license holder associated with the broker to each party (owner and buyer) to communicate with, provide opinions and advice to, and carry out the instructions of each party to the transaction.
- Must not, unless specifically authorized in writing to do so by the party, disclose:
  - that the owner will accept a price less than the written asking price;
  - that the buyer/tenant will pay a price greater than the price submitted in a written offer; and
  - any confidential information or any other information that a party specifically instructs the broker in writing not to disclose, unless required to do so by law.

**AS SUBAGENT:** A license holder acts as a subagent when aiding a buyer in a transaction without an agreement to represent the buyer. A subagent can assist the buyer but does not represent the buyer and must place the interests of the owner first.

### TO AVOID DISPUTES, ALL AGREEMENTS BETWEEN YOU AND A BROKER SHOULD BE IN WRITING AND CLEARLY ESTABLISH:

The broker's duties and responsibilities to you, and your obligations under the representation agreement.

Who will pay the broker for services provided to you, when payment will be made and how the payment will be calculated.

**LICENSE HOLDER CONTACT INFORMATION:** This notice is being provided for information purposes. It does not create an obligation for you to use the broker's services. Please acknowledge receipt of this notice below and retain a copy for your records.

#### 4M Realty Company

Licensed Broker/Broker Firm Name or Primary Assumed Business Name

Michael Weiss

Designated Broker of Firm

Nicholas T. Prater

Licensed Supervisor of Sales Agent/Associate

Eric Weiss

Sales Agent/Associate's Name

325425

License No.

279123

License No.

493024

License No.

624992

License No.

www.4mrealty.com

Email

mike@4mrealty.com

Email

nick@4mrealty.com

Email

eric@4mrealty.com

Email

(210) 342-4242

Phone

(210) 342-4242

Phone

(210) 342-4242

Phone

(210) 342-4242

Phone

Buyer/Tenant/Seller/Landlord Initials

Date

Regulated by the Texas Real Estate Commission

Information available at [www.trec.texas.gov](http://www.trec.texas.gov)

IABS 1-1