

# RETAIL LAND FOR SALE (FUEL RESTRICTED)

891 East Main Street • Price, Utah 84501

## HIGHLIGHTS

- LOT SIZE: 0.72 ACRES
- SOLD “AS-IS” WITH DEED RESTRICTION ON FUEL STATION USE
- SELLER WILL DEMOLISH BUILDING, REMOVE FUEL TANKS & PROVIDE A “NO FURTHER ACTION” LETTER BY Q4 2025
- SALE PRICE: \$350,000
- ZONING: GENERAL COMMERCIAL (C-1)

SELLER WILL DEMOLISH BUILDING, REMOVE FUEL TANKS & PROVIDE A “NO FURTHER ACTION” LETTER BY Q4 2025

MAIN ST 11,000 ADT

### TANNER OLSON

801.930.6752 | [tolson@legendcommercial.com](mailto:tolson@legendcommercial.com)

### JOE MILLS

801.930.6755 | [jmills@legendcommercial.com](mailto:jmills@legendcommercial.com)

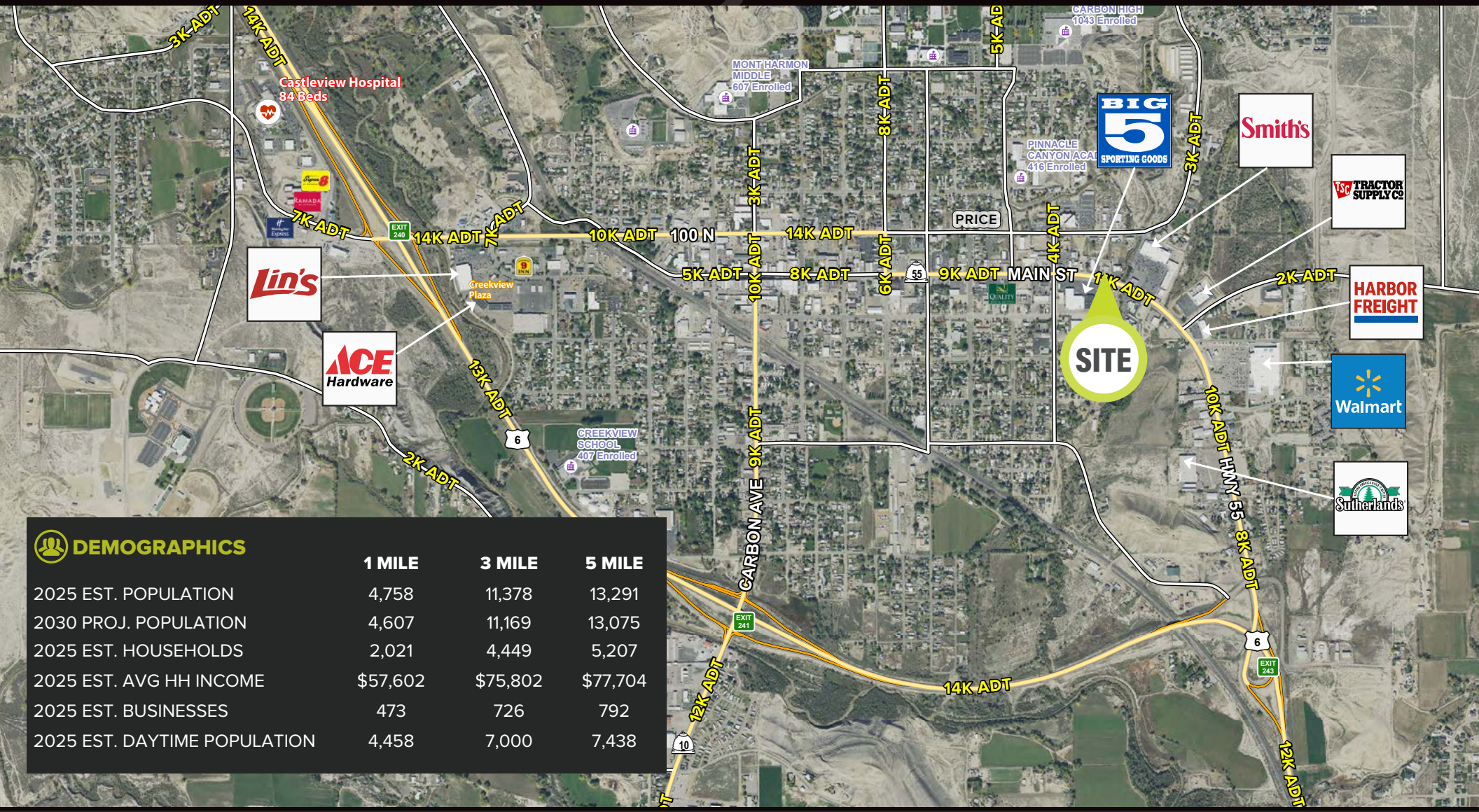
PARTNER **XTEAM**  
RETAIL ADVISORS

**LEGEND**  
COMMERCIAL ■■■■

801.930.6750 | [www.legendllp.com](http://www.legendllp.com)  
2180 S 1300 E, Suite 240 | Salt Lake City, UT 84106

# PRICE, UTAH

## LOCATION



### DEMOGRAPHICS

	1 MILE	3 MILE	5 MILE
2025 EST. POPULATION	4,758	11,378	13,291
2030 PROJ. POPULATION	4,607	11,169	13,075
2025 EST. HOUSEHOLDS	2,021	4,449	5,207
2025 EST. AVG HH INCOME	\$57,602	\$75,802	\$77,704
2025 EST. BUSINESSES	473	726	792
2025 EST. DAYTIME POPULATION	4,458	7,000	7,438

### TANNER OLSON

801.930.6752 | [tolson@legendcommercial.com](mailto:tolson@legendcommercial.com)

### JOE MILLS

801.930.6755 | [jmills@legendcommercial.com](mailto:jmills@legendcommercial.com)



## LEGEND

COMMERCIAL

801.930.6750 | [www.legendllp.com](http://www.legendllp.com)  
 2180 S 1300 E, Suite 240 | Salt Lake City, UT 84106

© Legend Partners, LLP. All rights reserved. All information contained herein is from sources deemed reliable; however, no representation or warranty is made to the accuracy thereof.

