



# 2660 BRIDGEWAY

---

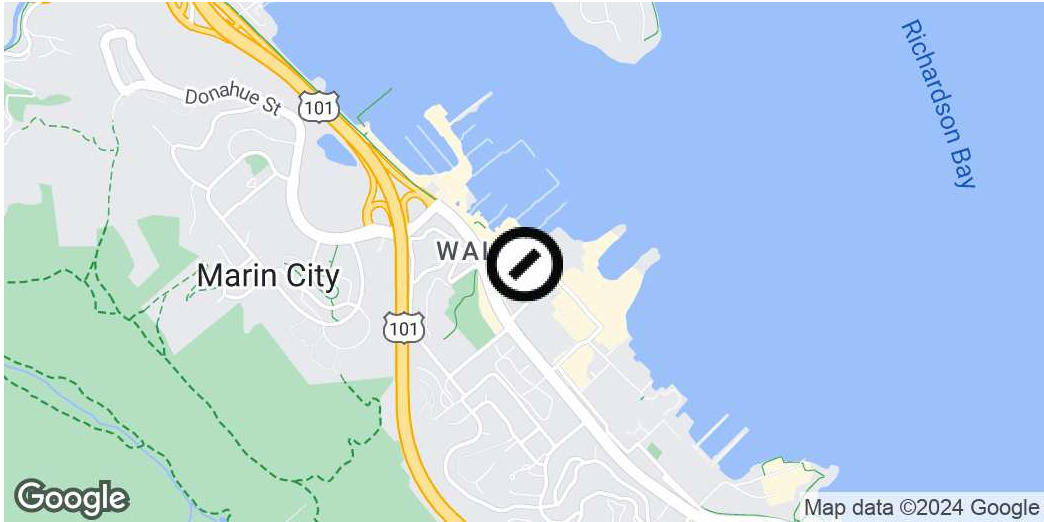
2660 Bridgeway, Sausalito, CA 94965

Get in touch

**Joby Tapia**  
Senior Vice President

415.254.4788  
joby.tapia@compass.com  
CalDRE #01307460

# Executive Summary



### Offering Summary

Sale Price:	\$2,350,000
Building Size:	2,700 SF
Lot Size:	10,798 SF
Number of Units:	1
Price / SF:	\$870.37
Year Built:	1969
Zoning:	Multi

### Property Overview

Located at 2660 Bridgeway in Sausalito, CA, this 2,700 SF building and outparcel is an ideal opportunity for an owner/user needing both industrial and public meeting space with abundant parking.

### Property Highlights

- 2,700 SF industrial/flex space building
- Zoned Multi for versatile usage
- Strategic location in Sausalito, CA
- Potential for diverse commercial and industrial applications

**Joby Tapia**  
**Senior Vice President**  
 415.254.4788  
 joby.tapia@compass.com  
 CalDRE #01307460

# Property Description



## Property Description

Introducing a prime industrial/flex space investment opportunity at 2660 Bridgeway, Sausalito, CA. This 2,700 SF building, constructed in 1969, offers 1 unit in a Multi-zoned area. Ideal for discerning investors seeking a well-located property with potential for diverse usage. With its strategic location in the heart of Sausalito, this property presents an excellent opportunity to capitalize on the flourishing commercial real estate market.

## Location Description

**Joby Tapia**  
Senior Vice President

415.254.4788  
joby.tapia@compass.com  
CalDRE #01307460

# Complete Highlights



## Property Highlights

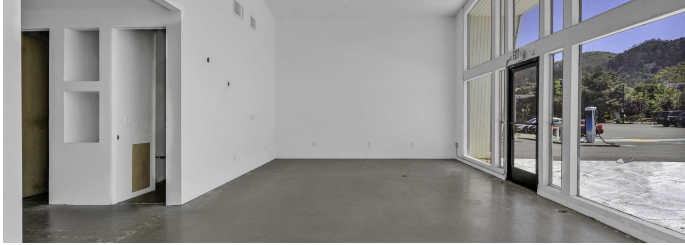
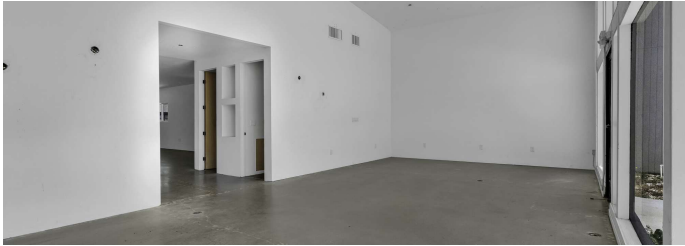
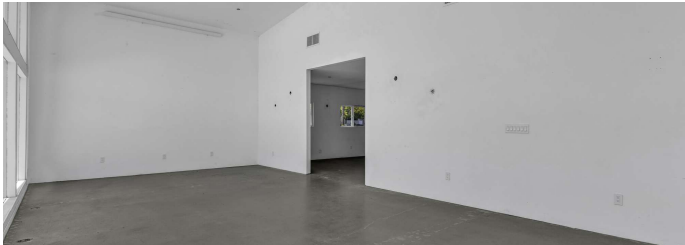
- 2,700 SF industrial/flex space building
- Constructed in 1969
- Zoned Multi for versatile usage
- 1 unit offering flexibility for investment
- Strategic location in Sausalito, CA
- Potential for diverse commercial and industrial applications



**Joby Tapia**  
Senior Vice President

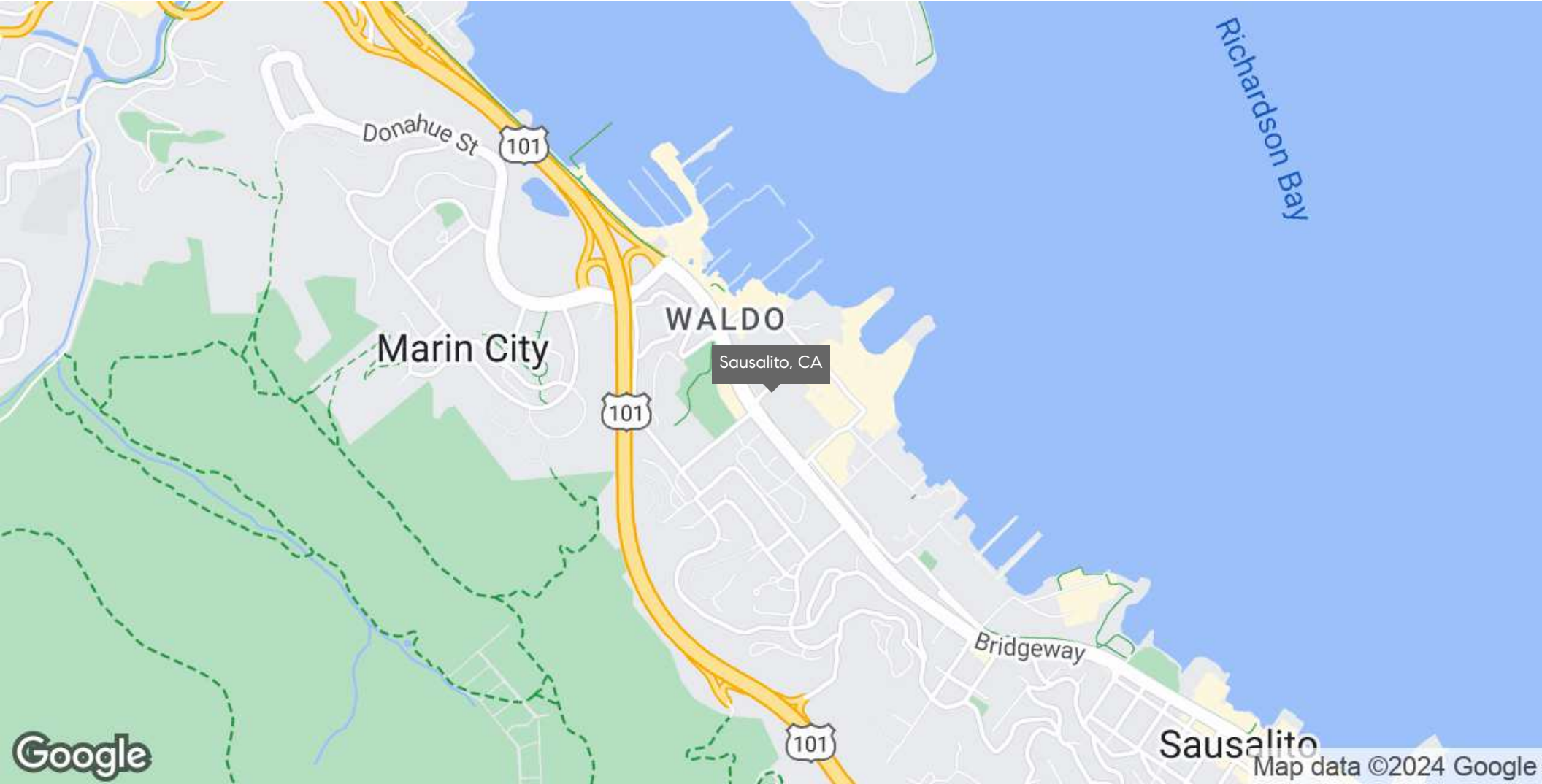
415.254.4788  
joby.tapia@compass.com  
CalDRE #01307460

# Additional Photos



**Joby Tapia**  
Senior Vice President  
415.254.4788  
joby.tapia@compass.com  
CalDRE #01307460

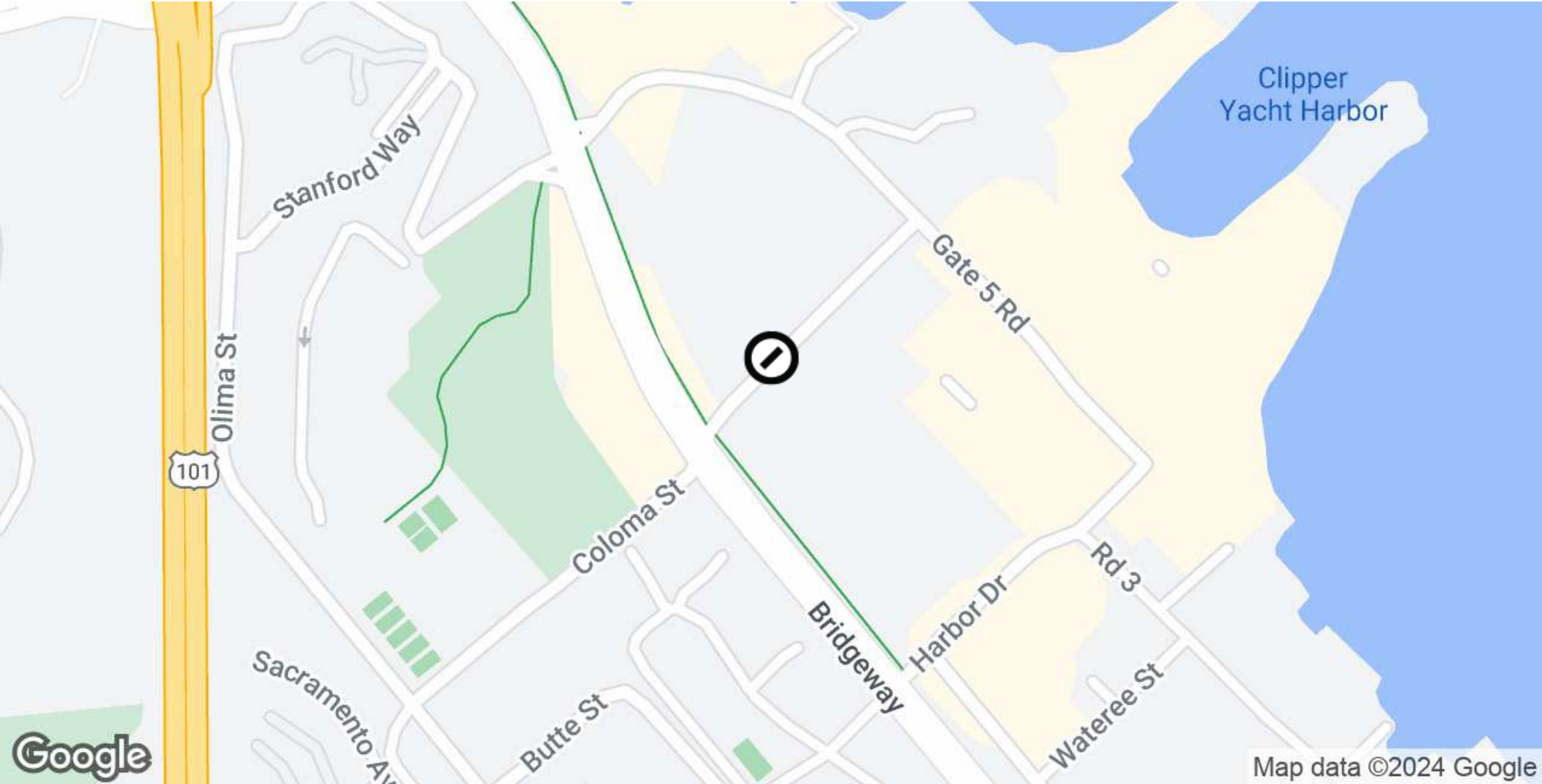
# Regional Map



**Joby Tapia**  
Senior Vice President  
415.254.4788  
joby.tapia@compass.com  
CalDRE #01307460

Compass is a real estate broker licensed by the State of California and abides by Equal Housing Opportunity laws. License Number 01991628, 01527235, 1527365. All material presented herein is intended for informational purposes only and is compiled from sources deemed reliable but has not been verified. Changes in price, condition, sale or withdrawal may be made without notice. No statement is made as to the accuracy of any description. All measurements and square footage are approximate.

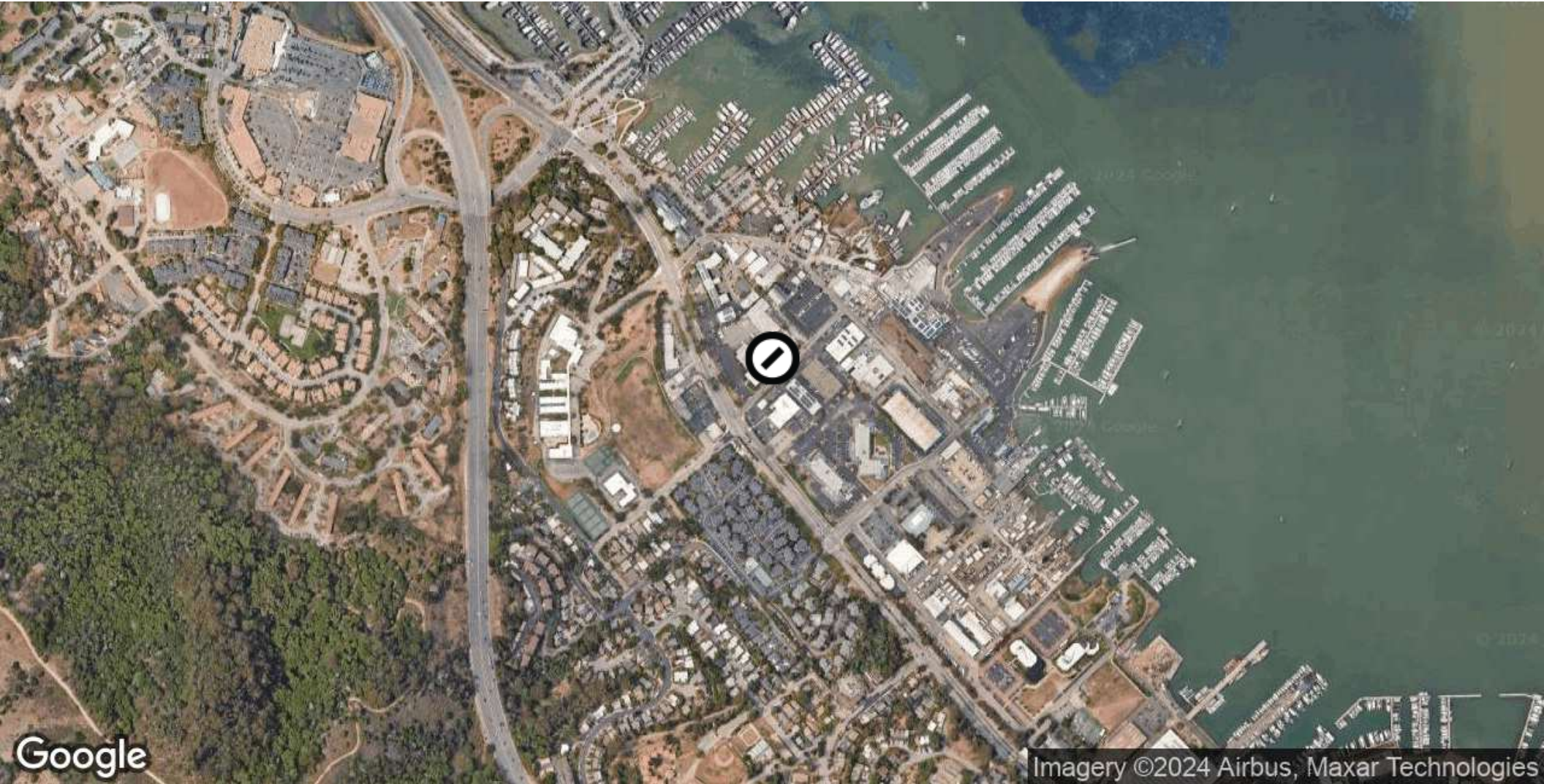
# Location Map



**Joby Tapia**  
Senior Vice President  
415.254.4788  
joby.tapia@compass.com  
CalDRE #01307460

Compass is a real estate broker licensed by the State of California and abides by Equal Housing Opportunity laws. License Number 01991628, 01527235, 1527365. All material presented herein is intended for informational purposes only and is compiled from sources deemed reliable but has not been verified. Changes in price, condition, sale or withdrawal may be made without notice. No statement is made as to the accuracy of any description. All measurements and square footage are approximate.

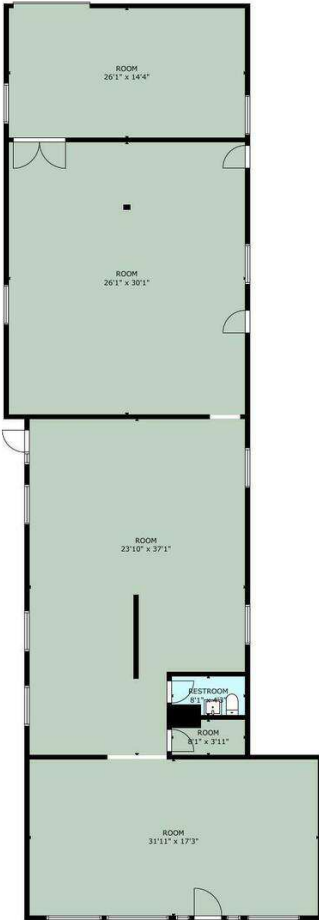
# Aerial Map



**Joby Tapia**  
**Senior Vice President**  
415.254.4788  
joby.tapia@compass.com  
CalDRE #01307460



# Floor Plans



GROSS INTERNAL AREA  
 TOTAL: 2627 sq.ft  
 FLOOR 1: 2627 sq.ft

RENDERING BY SPOTLIGHT PHOTOGRAPHY, INC. ALL MEASUREMENTS ARE APPROXIMATE AND MAY NOT BE EXACT. DO NOT RELY ON THE ACCURACY OF THIS FLOORPLAN WHEN DETERMINING THE PRICE OF A PROPERTY OR MAKING DECISIONS REGARDING BUYING OR SELLING OF PROPERTIES WITHOUT INDEPENDENT VERIFICATION.

FLOOR 1

**Joby Tapia**  
 Senior Vice President  
 415.254.4788  
 joby.tapia@compass.com  
 CalDRE #01307460





**Joby Tapia**

**Senior Vice President**

joby.tapia@compass.com

Direct: **415.254.4788** | Cell: **415.254.4788**

CalDRE #01307460

**Compass Commercial - San Francisco & Los Angeles**  
1699 Van Ness Avenue  
San Francisco, CA 94109  
415.874.5001

**Joby Tapia**  
**Senior Vice President**  
415.254.4788  
joby.tapia@compass.com  
CalDRE #01307460

