

1 MONTH FREE RENT PER YEAR
4% TENANT REP COMMISSION

CLICK OR SCAN



TO VIEW
PROPERTY VIDEO

7920 ARJONS DRIVE

SAN DIEGO, CA 92126

FOR LEASE | ± 7,483 SQUARE FOOT INDUSTRIAL WITH STREET FRONT

 **LEE &
ASSOCIATES**
COMMERCIAL REAL ESTATE SERVICES

1902 Wright Place, Suite 180
Carlsbad, CA 92008
P. 760.929.9700 F. 760.929.9977
www.lee-associates.com
Corporate Lic # 01096996

TIM GOSSELIN, CCIM
Principal
(760) 822-3730
tgosselin@lee-associates.com
DRE Lic#: 01495432



Confidentiality Agreement

DO NOT DISTURB THE OCCUPANT. The information contained in the following Marketing Brochure is proprietary and strictly confidential. It is intended to be reviewed only by the party receiving it from Lee & Associates and should not be made available to any other person or entity without the written consent of Lee & Associates. This Marketing Brochure has been prepared to provide summary, unverified information to prospective tenants, and to establish only a preliminary level of interest in the subject property. The information contained herein is not a substitute for a thorough due diligence investigation. Lee & Associates has not made any investigation, and makes no warranty or representation, with respect to the income or expenses for the subject property, the future projected financial performance of the property, the size and square footage of the property and improvements, the presence or absence of contaminating substances, PCB's or asbestos, the compliance with State and Federal regulations, the physical condition of the improvements thereon, or the financial condition or business prospects of the premises, or verified the floor plans. The information contained in this Marketing Brochure has been obtained from sources we believe to be reliable; however, Lee & Associates has not verified, and will not verify, any of the information contained herein, nor has Lee & Associates conducted any investigation regarding these matters and makes no warranty or representation whatsoever regarding the accuracy or completeness of the information provided.

All potential occupiers must take appropriate measures to verify all of the information set forth herein.

PROPERTY FEATURES

7920 ARJONS DRIVE
SAN DIEGO, CA 92126
± 7,483 SQ. FT.

- 40% office / 60% warehouse
- (2) grade level 12' x 12' truck doors
- ± 20' warehouse clearance
- Building signage available
- Shower in unit
- Corner unit with good parking

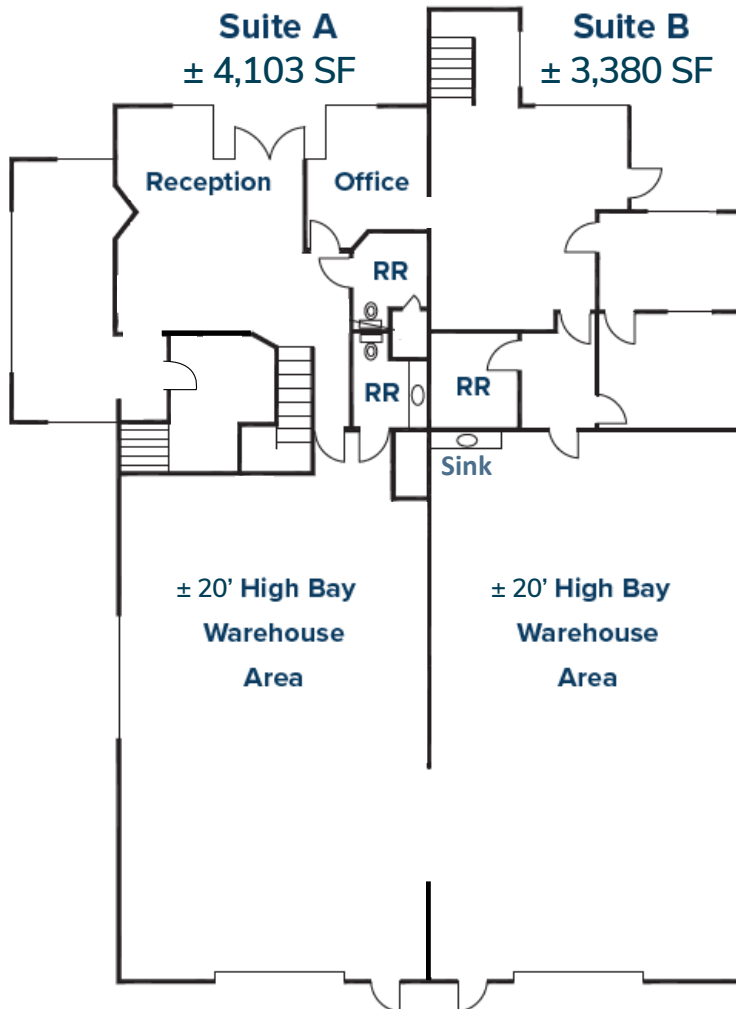
Lease Rate: \$1.55 PSF per Month MG + Utilities



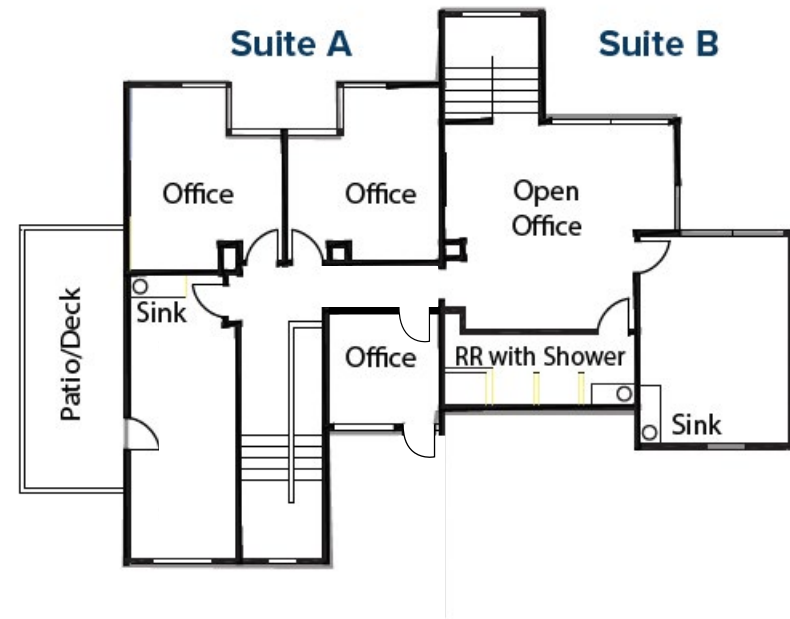
FLOOR PLAN

7920 ARJONS DRIVE
SAN DIEGO, CA 92126
± 7,483 SQ. FT.

FIRST FLOOR AREA



SECOND FLOOR OFFICE AREA



* Rendering is an approximation, not drawn

CORONADO

POINT LOMA

MISSION BAY

LA JOLLA



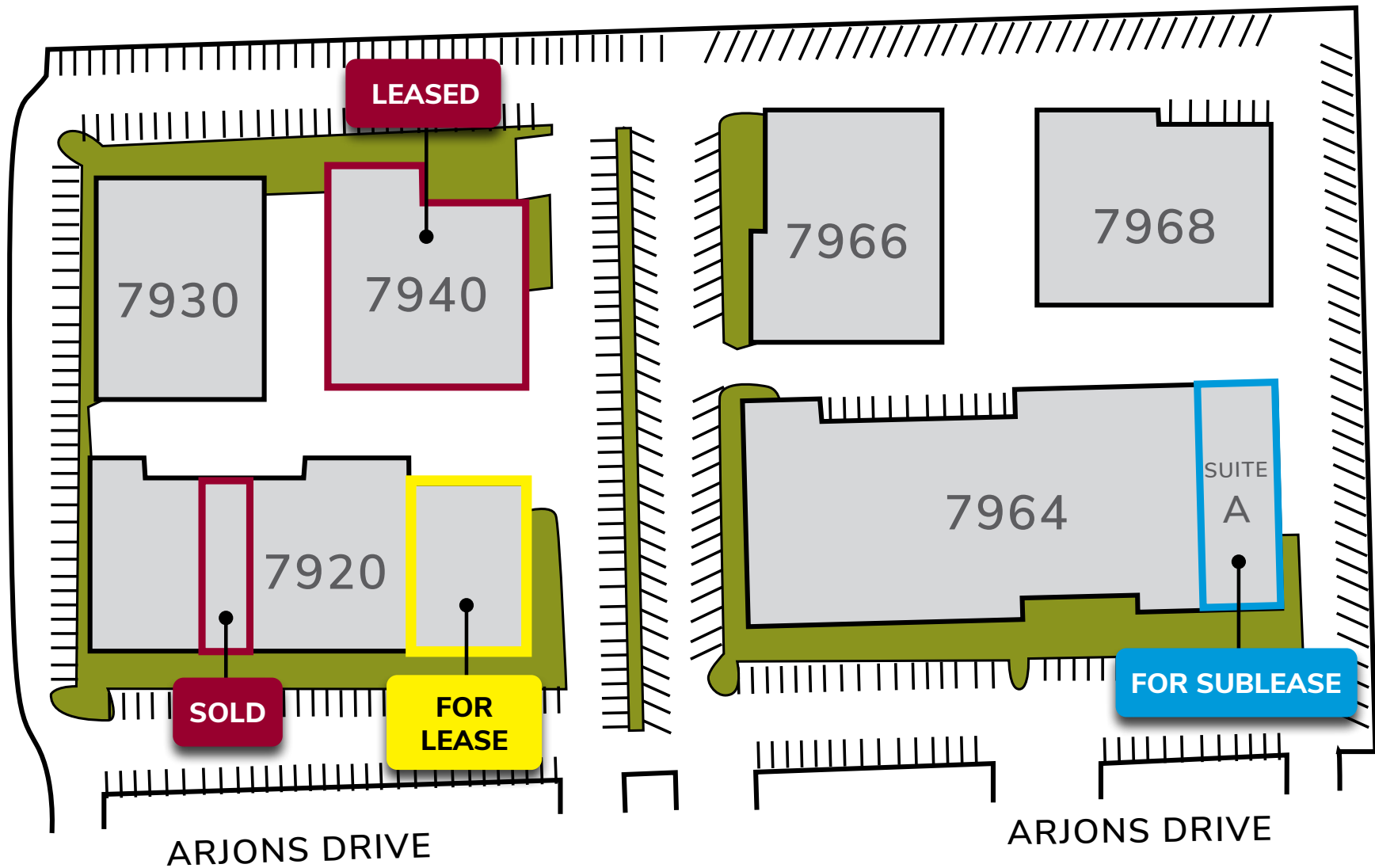
MIRAMAR DR

DOWDY DR

7920 ARJONS DR

ARJONS DR





**NO ONE IS MORE ACTIVE AT
MIRALANI BLUFFS I & II**



TIM GOSSELIN
Principal
(760) 822-3730
CalBRE Lic#: 01495432



LOCATION MAP

7920 ARJONS DRIVE
SAN DIEGO, CA 92126
± 7,483 SQ. FT.



7920 ARJONS DRIVE

SAN DIEGO, CA 92126



COMMERCIAL REAL ESTATE SERVICES

1902 Wright Place, Suite 180 Carlsbad, CA 92008
P: 760-929-9700 | www.lee-associates.com/sandiegonoorth | Corporate Lic # 01096996

TIM GOSSELIN, CCIM
Principal
(760) 822-3730
tgosselin@lee-associates.com
DRE Lic#: 01495432



ALL INFORMATION FURNISHED REGARDING PROPERTY FOR SALE, RENTAL OR FINANCING IS FROM SOURCES DEEMED RELIABLE, BUT NO WARRANTY OR REPRESENTATION IS MADE TO THE ACCURACY THEREOF AND SAME IS SUBMITTED TO ERRORS, OMISSIONS, CHANGE OF PRICE, RENTAL OR OTHER CONDITIONS PRIOR TO SALE, LEASE OR FINANCING OR WITHDRAWAL WITHOUT NOTICE. NO LIABILITY OF ANY KIND IS TO BE IMPOSED ON THE BROKER HEREIN.