

4160

Piedmont Pkway

GREENSBORO, NC

Suite 101 | 1,417 SF

Suite 106 | 707 SF

Suite 113 | 1,389 SF

OFFICE
FOR
LEASE

CALL FOR PRICING

PROPERTY HIGHLIGHTS

- Professional Office Building
- Conveniently located with easy access to Wendover Ave and Highway 68
- Building offers keycard access and full-service amenities
- Parking surrounds the building with multiple building entrances
- Variety of shopping and dining options nearby
- Ground floor suite with lobby exposure

DEMOGRAPHICS

	1 Mile	3 Miles	5 Miles
Total Population	3,009	39,124	106,927
Total Households	1,589	17,077	46,851
Total HH Income	\$82,593	\$94,520	\$86,888

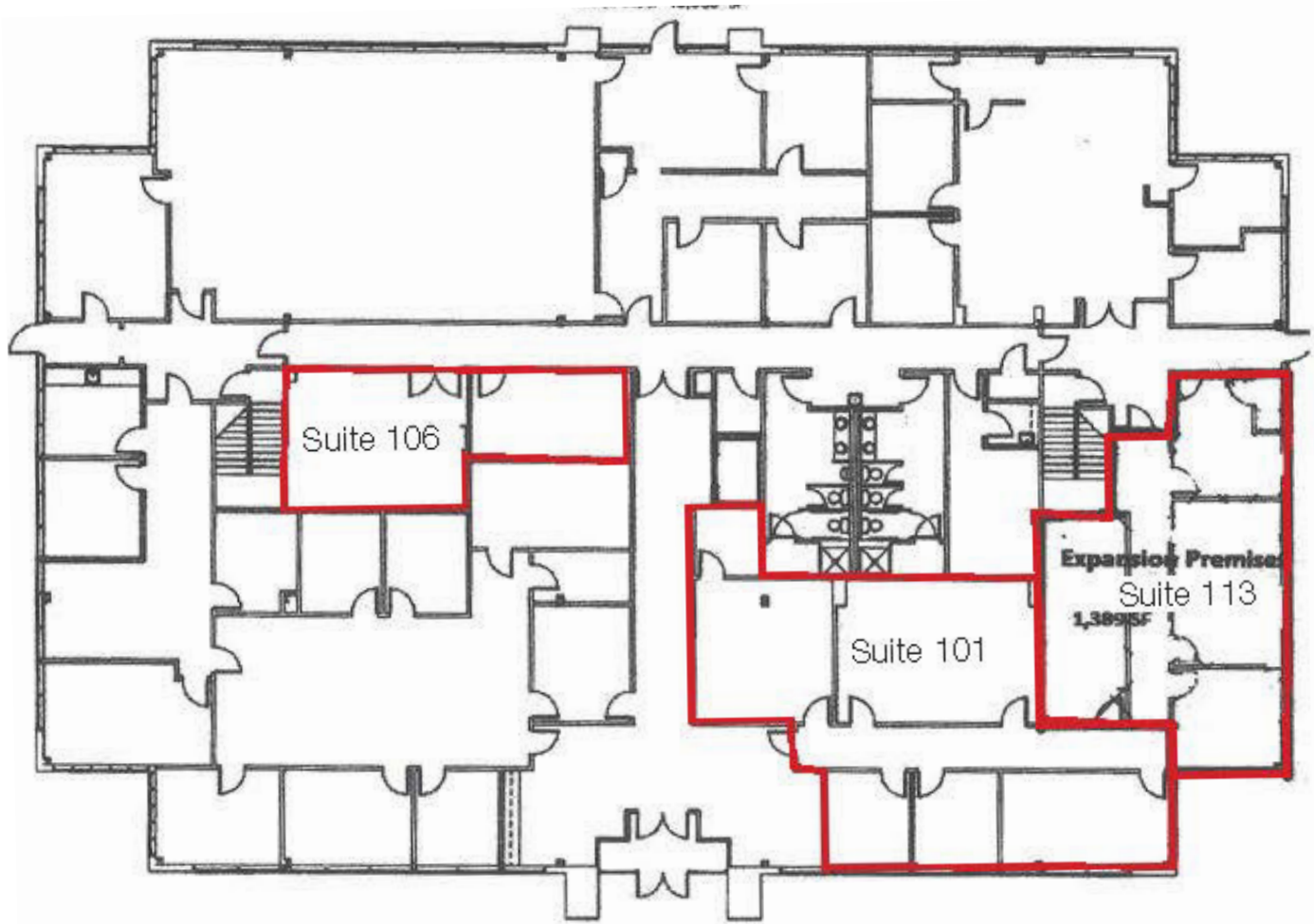
NAIPiedmont Triad
Commercial Real Estate Services, World Wide

NANCY COX
BROKER
336.686.5388
ncox@naipt.com

LAWRENCE COX
BROKER
336.337.2281
lcox@naipt.com

348 N. Elm Street • Greensboro, NC 27401 • naipt.com

Floor Plan

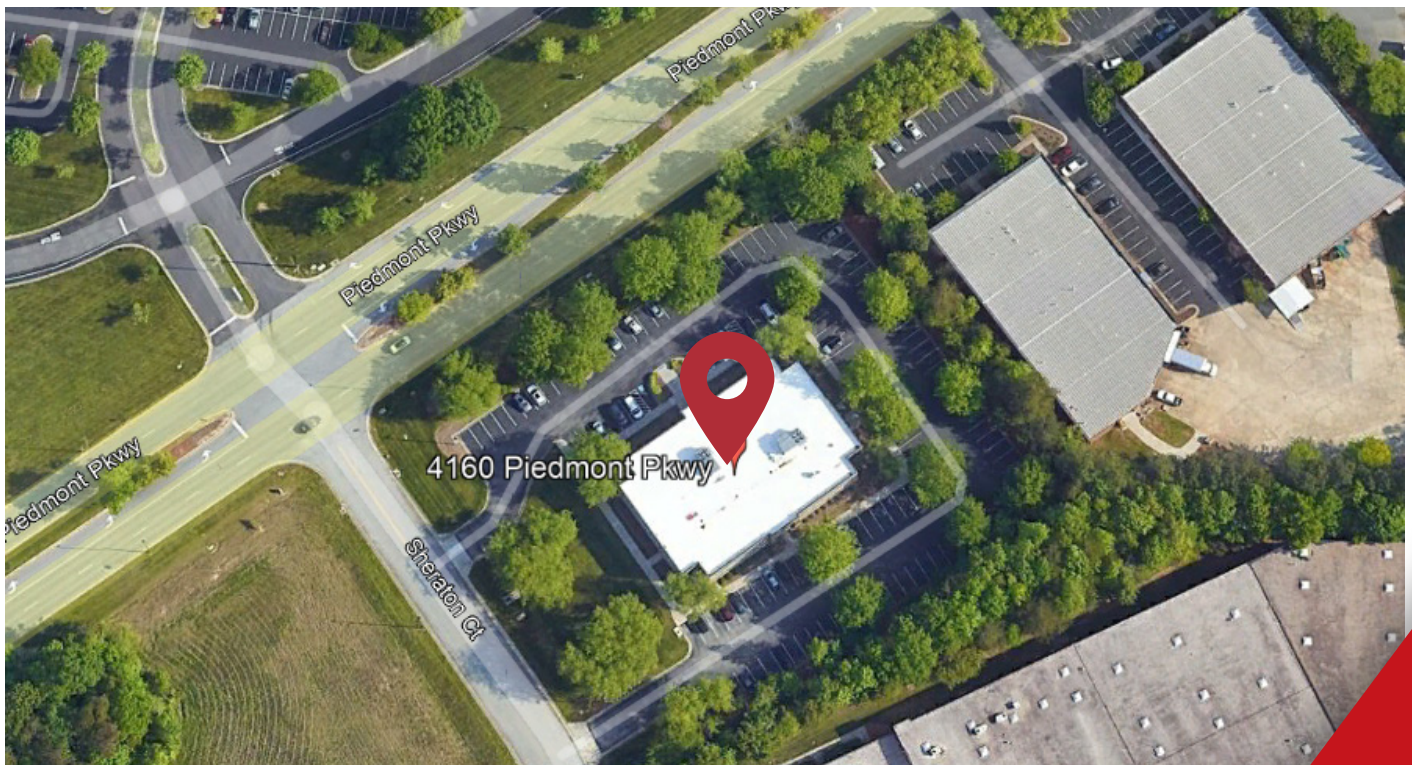
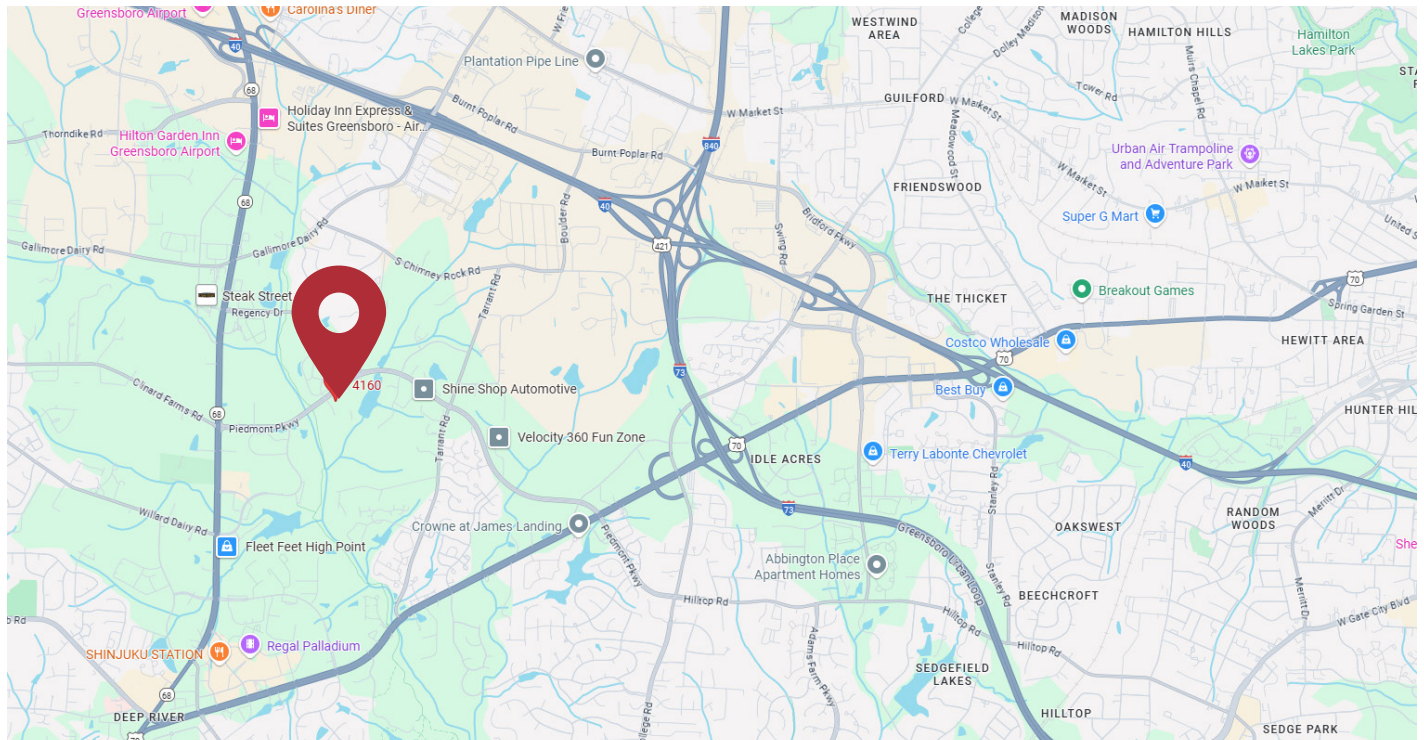


This material may contain content generated with AI assistance and publicly sourced data. NAI Piedmont Triad makes every effort to verify the information but makes no warranties or representations regarding the accuracy, completeness, or reliability of the information. Independent verification of all details is strongly encouraged. Prices, terms, and availability are subject to change without prior notice.

NANCY COX
BROKER
336.686.5388
ncox@naipt.com

LAWRENCE COX
BROKER
336.337.2281
Lcox@naipt.com

348 N. Elm Street • Greensboro, NC 27401 • naipt.com



This material may contain content generated with AI assistance and publicly sourced data. NAI Piedmont Triad makes every effort to verify the information but makes no warranties or representations regarding the accuracy, completeness, or reliability of the information. Independent verification of all details is strongly encouraged. Prices, terms, and availability are subject to change without prior notice.

NANCY COX
BROKER
336.686.5388
ncox@naipt.com

LAWRENCE COX
BROKER
336.337.2281
Lcox@naipt.com

348 N. Elm Street • Greensboro, NC 27401 • naipt.com