

# 6850

## N DURANGO DR

LAS VEGAS, NV 89149

# CENTENNIAL HILLS MEDICAL OFFICE FOR LEASE

SUITES RANGING FROM  
1,489 SF - 3,511 SF

SUITE 100



CLICK HERE

## Centennial Hills Medical Plaza



HEALTHCARE

**JAMIE KRAHNE**  
SENIOR VICE PRESIDENT  
702.216.2363 **CELL**  
jamiiek@dcghealthcare.com  
B.143850/PM.164496

**MIKE TYMCZYN**  
VICE PRESIDENT  
702.271.4004 **CELL**  
miket@dcghealthcare.com  
S.177844

## PROPERTY HIGHLIGHTS

- Shell and turnkey suites available
- Tenant improvement allowances based upon term length
- Covered physician parking included
- High visibility from US-95 and I-215 Beltway
- On-site facility engineer
- Current specialties include: Pediatrics - Primary Care - OB/GYN - Cardiology - ENT

AREA MAP

N DURANGO DR

W DEER SPRINGS WAY



CENTENNIAL HILLS MEDICAL PLAZA

Centennial Hills Medical Plaza

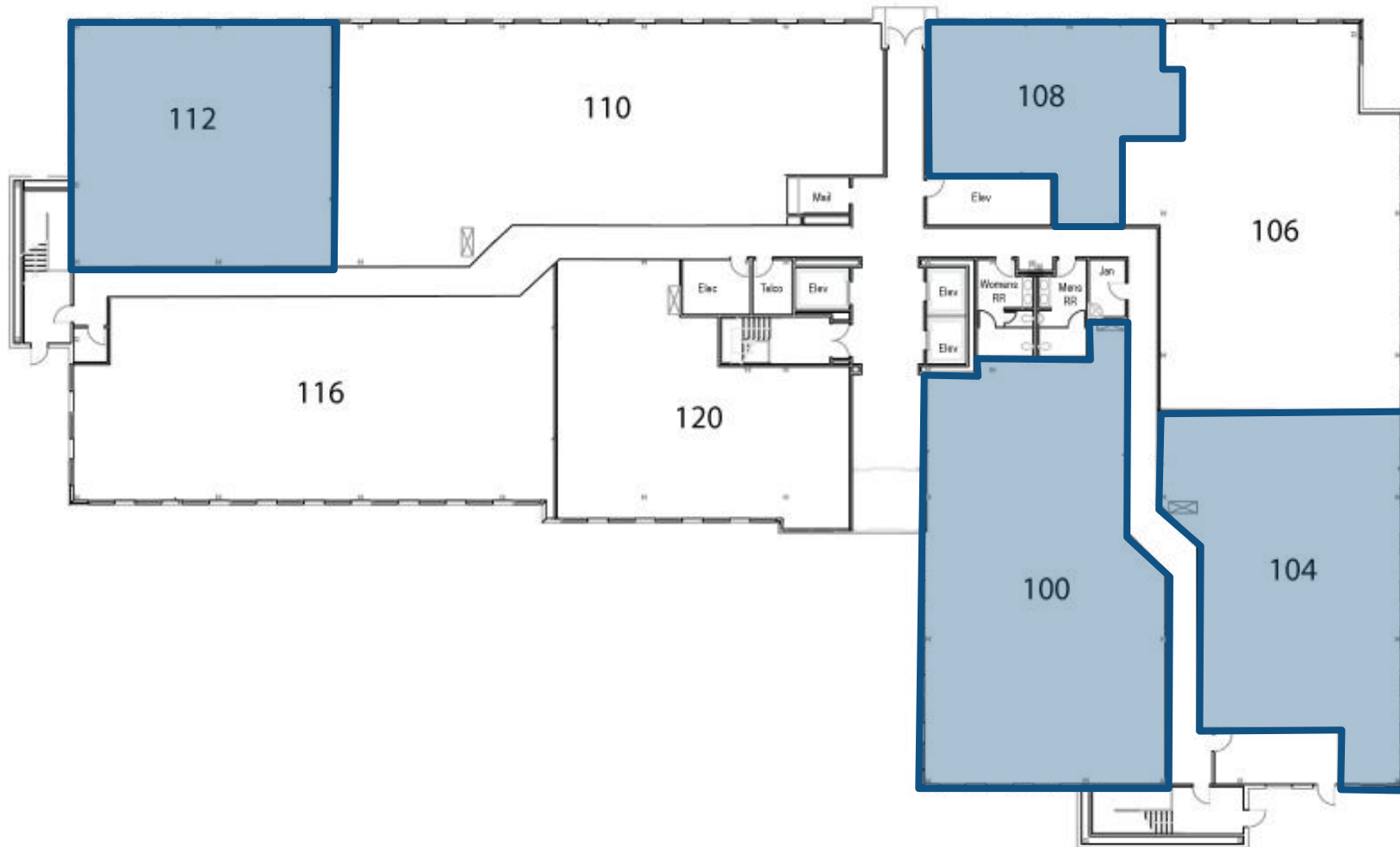


# FIRST FLOOR



## AVAILABLE SUITES

SUITE 100	3,511 SF SEPARATE ENTRY
SUITE 104	1,505 SF SHELL
SUITE 108	1,518 SF
SUITE 112	2,090 SF SHELL





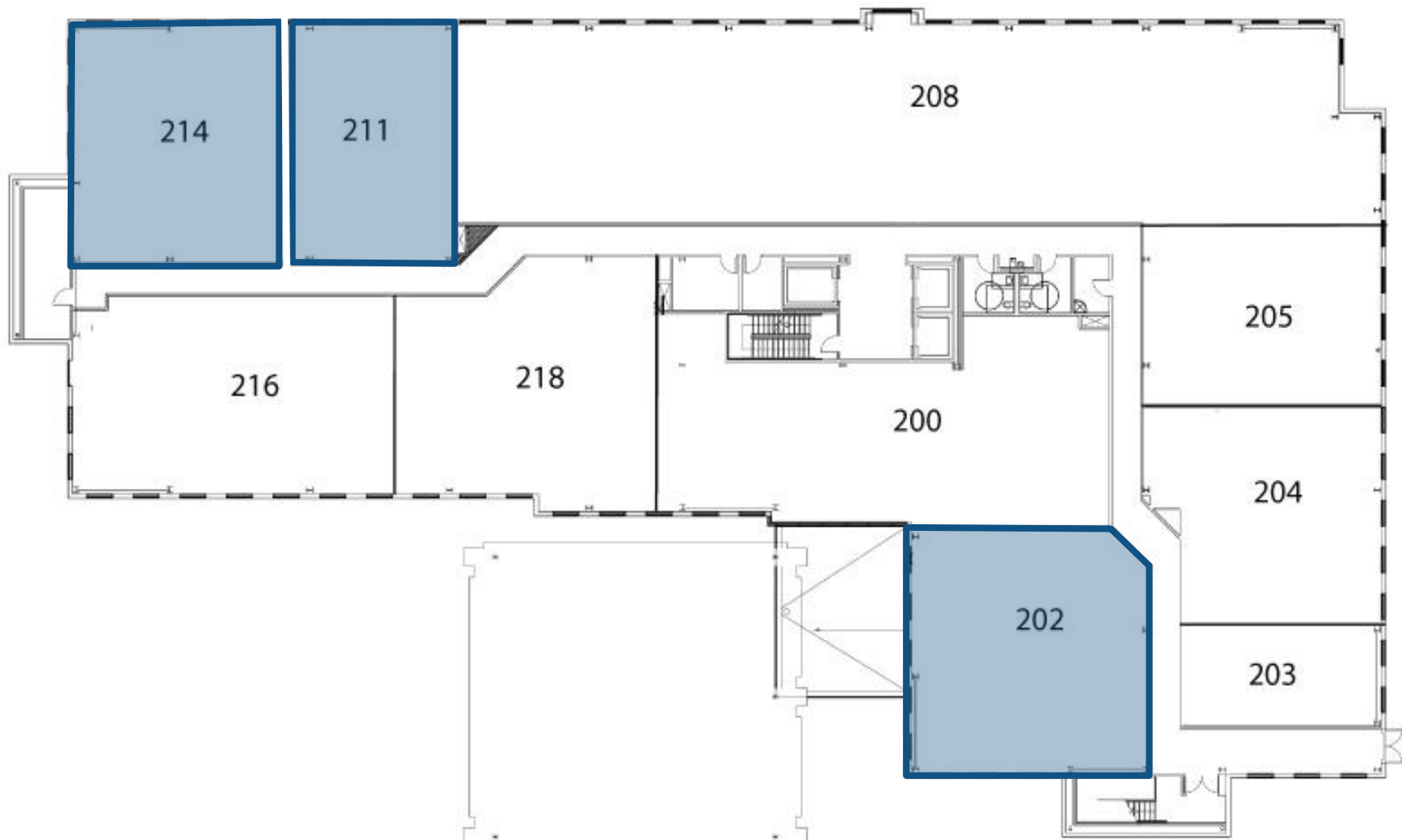
**SUITE 100**



# SECOND FLOOR

## AVAILABLE SUITES

SUITE 202	2,205 SF
SUITE 211	1,489 SF
SUITE 214	1,919 SF





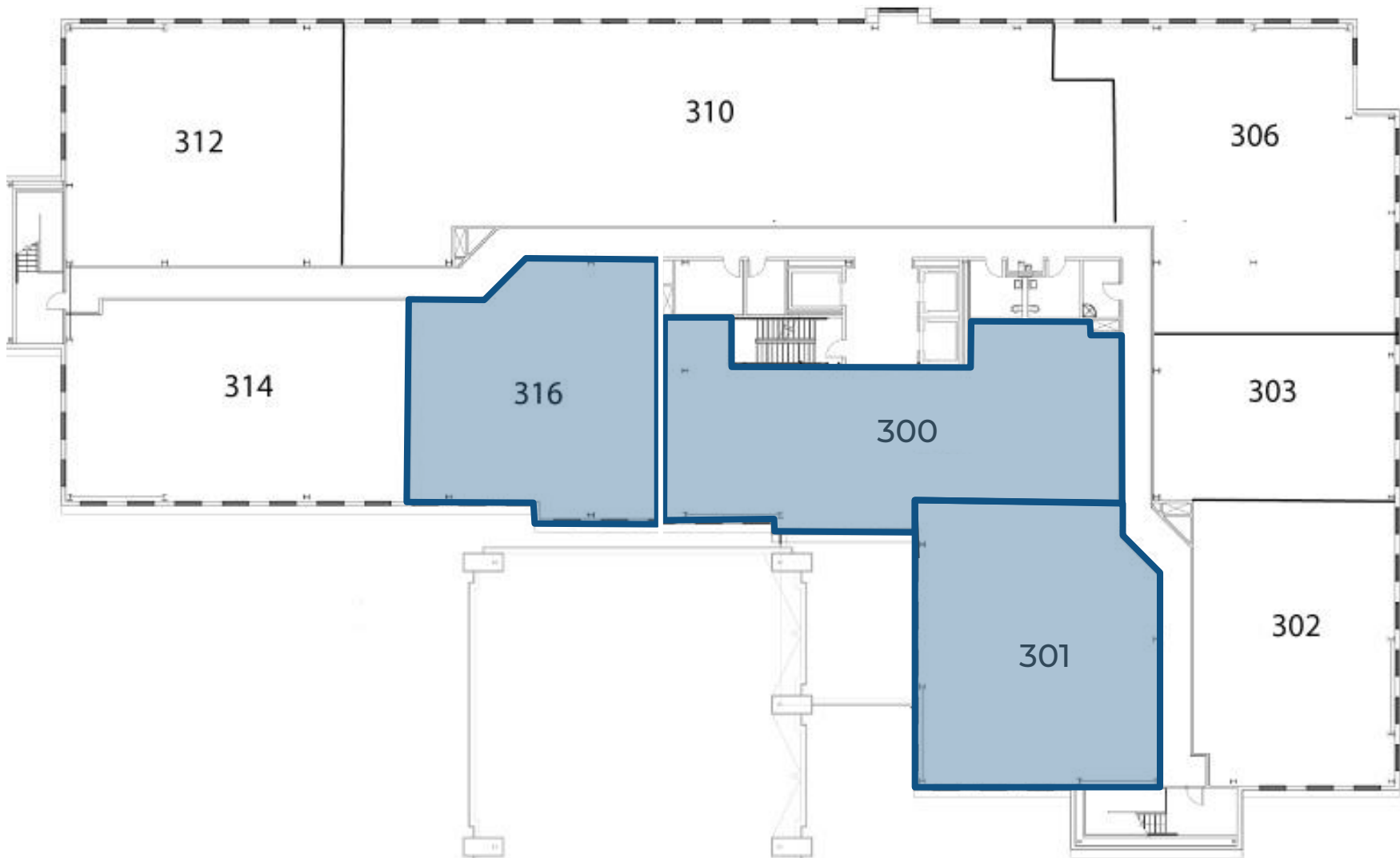
SUITE 214

DCG

# THIRD FLOOR

## AVAILABLE SUITES

SUITE 300	2,841 SF
SUITE 301	2,446 SF
SUITE 316	1,743 SF SHELL







SUITE 300

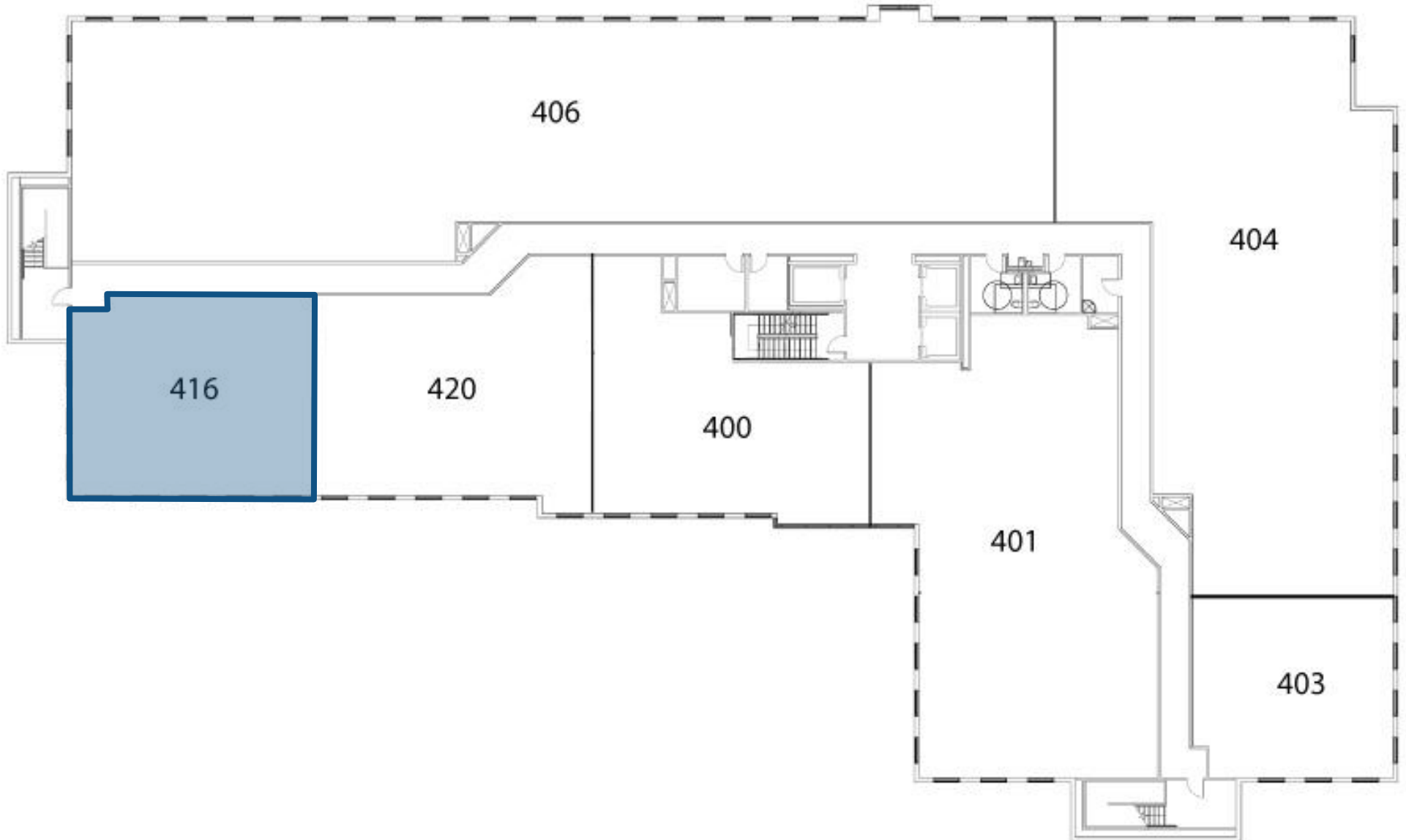


**FOURTH FLOOR**

**AVAILABLE SUITES**

**SUITE 416**

**1,729 SF  
SHELL**



## HOSPITAL SERVICES



### **Cardiovascular**

- Chest Pain Center
- Angioplasty
- Cardiac Catheterization Lab
- Intravascular Ultrasound
- Pacemaker/Defibrillator
- Biventricular Implants
- Peripheral Vascular Interventions

### **Diabetes**

- Inpatient care

### **Dialysis**

- Inpatient care

### **Emergency Services**

- Emergency Care 24/7
- Fast-track Urgent Care
- Call-ahead Appointments
- Advanced Primary Stroke Center

### **Endoscopic Procedures**

- Comprehensive Reflux Center
- Endoscopic Ultrasound

### **Laboratory Services**

#### **Maternity Services**

- Triage
- Antepartum
- Labor and Delivery
- Postpartum
- Level III Neonatal ICU
- Midwifery Services

#### **Orthopedics and Spine Services**

- Total knee replacement
- Partial knee resurfacing
- Hip replacement

#### **Outpatient Rehabilitation**

#### **Pediatrics**

- Outpatient surgery
- Pediatric sedation service

### **Radiology**

- Angiography, CT scan
- MRI
- Nuclear Medicine
- O-Arm Imaging
- X-ray
- Bone density

### **Rehabilitation**

- Physical Therapy
- Speech Therapy
- Occupational Therapy

### **Respiratory Services**

#### **Surgery**

- Inpatient
- Outpatient
- Robotic

#### **Wound Care**

- Inpatient care
- Outpatient care
- Hyperbaric medicine