



UNREAL
CAPITAL

1060 Memorial Drive SE
Atlanta, GA 30316



PROPERTY FEATURES:

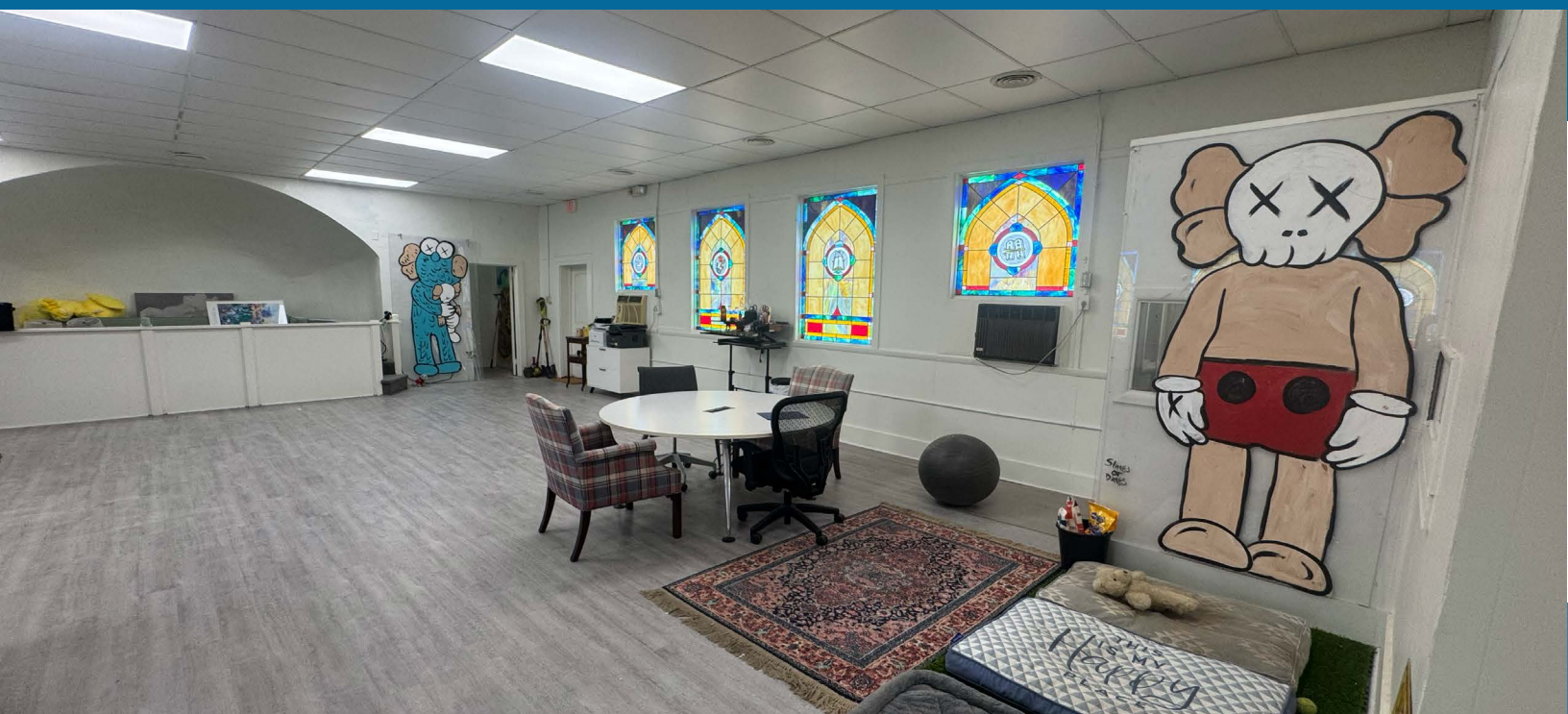
- + 20+ Parking Spaces
- + Fenced Lot
- + Prominent Signage Opportunity
- + Versatile/Open Floorplan
- + 10' Ceilings
- + Vintage Stained Glass Windows
- + Adjacent to new \$25MM Mixed-Use
- + Two Bathrooms
- + Office/Creative/Retail/Assembly
- + Walkscore of 90/100

AVAILABILITY:

- + 1,650 SF
- + Available Immediately
- + Custom Floorplans Available
- + \$4,000/Monthly NNN

LOCATION:

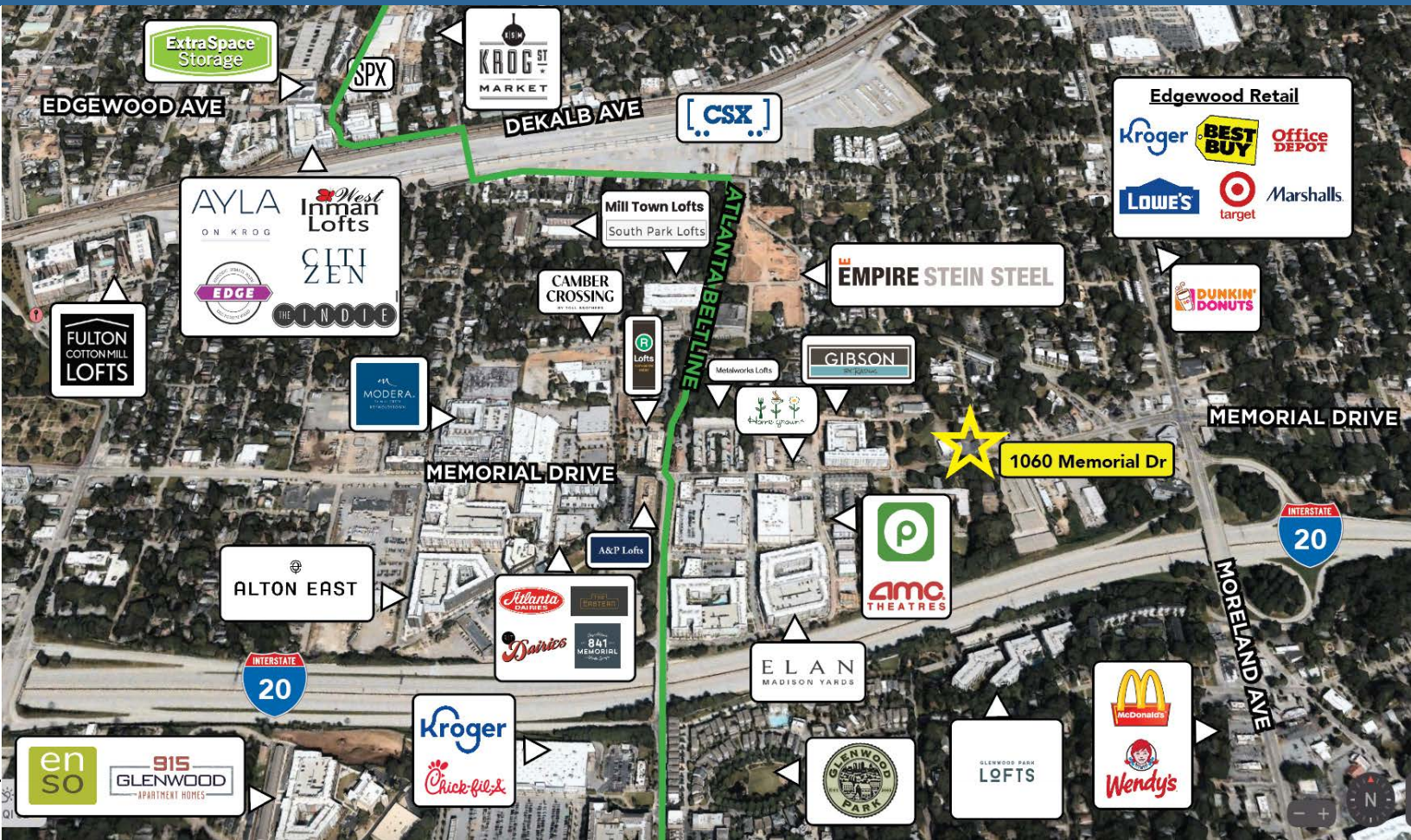
- + Prominent Reynoldstown Location
- + Growth Path Along Memorial Dr
- + Blocks from Beltline + Madison Yards
- + Easy Access to I-20



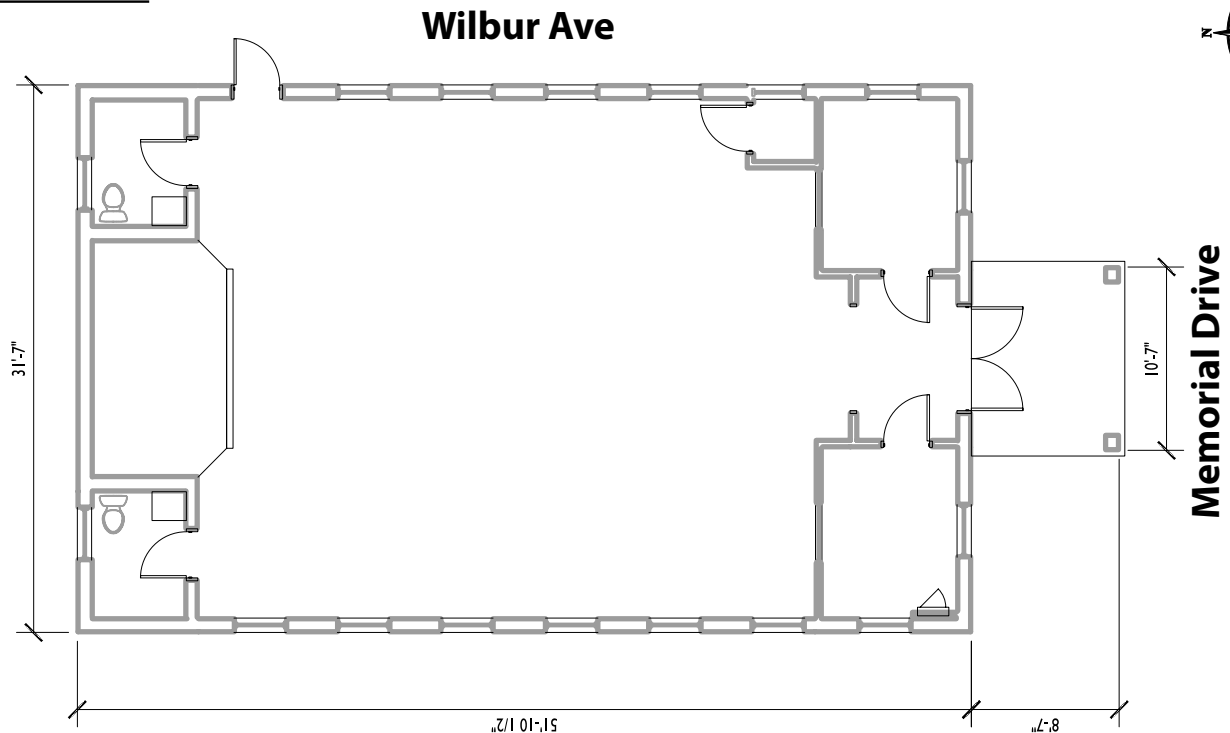


UNREAL
CAPITAL

1060 Memorial Drive SE
Atlanta, GA 30316



Floor Plan



Fenced Parking Lot

SPENCER COAN
502.500.6084
sc@unrealcapital.com

JARED BARNETT
404.606.3420
jb@unrealcapital.com