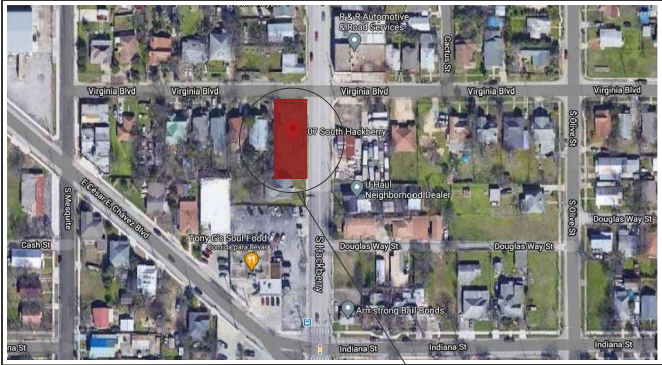


CONSTRUCTION DOCUMENTS FOR:

907 HACKBERRY

907 S HACKBERRY SAN ANTONIO, TEXAS 78247

PROJECT LOCATION MAP



AERIAL LOCATION MAP
N.T.S.

INDEX OF DRAWINGS

SHEET NO.	DRAWING CLASSIFICATION	DRAWING TITLE
G0.00	GENERAL	COVER SHEET
A1.01	ARCHITECTURAL	FIRST FLOOR PLAN DUPLEX 02
A1.02	ARCHITECTURAL	SECOND FLOOR PLAN DUPLEX 02
A1.03	ARCHITECTURAL	CEILING PLAN DUPLEX 02
A1.04	ARCHITECTURAL	ELEVATIONS AND SECTIONS DUPLEX 02
A1.05	ARCHITECTURAL	MODEL 3D

THE CITY OF SAN ANTONIO ADOPTED CODES:
2018 INTERNATIONAL BUILDING CODE, IBC
2018 INTERNATIONAL EXISTING BUILDING CODE, IEBC
2018 SAN ANTONIO PROPERTY MAINTENANCE CODE
(BASED ON THE 2018 INTERNATIONAL PROPERTY MAINTENANCE CODE)

NOTES:

907 HACKBERRY
907 S HACKBERRY
SAN ANTONIO, TEXAS 78247

COVER SHEET

SHEET NO.

G0.00

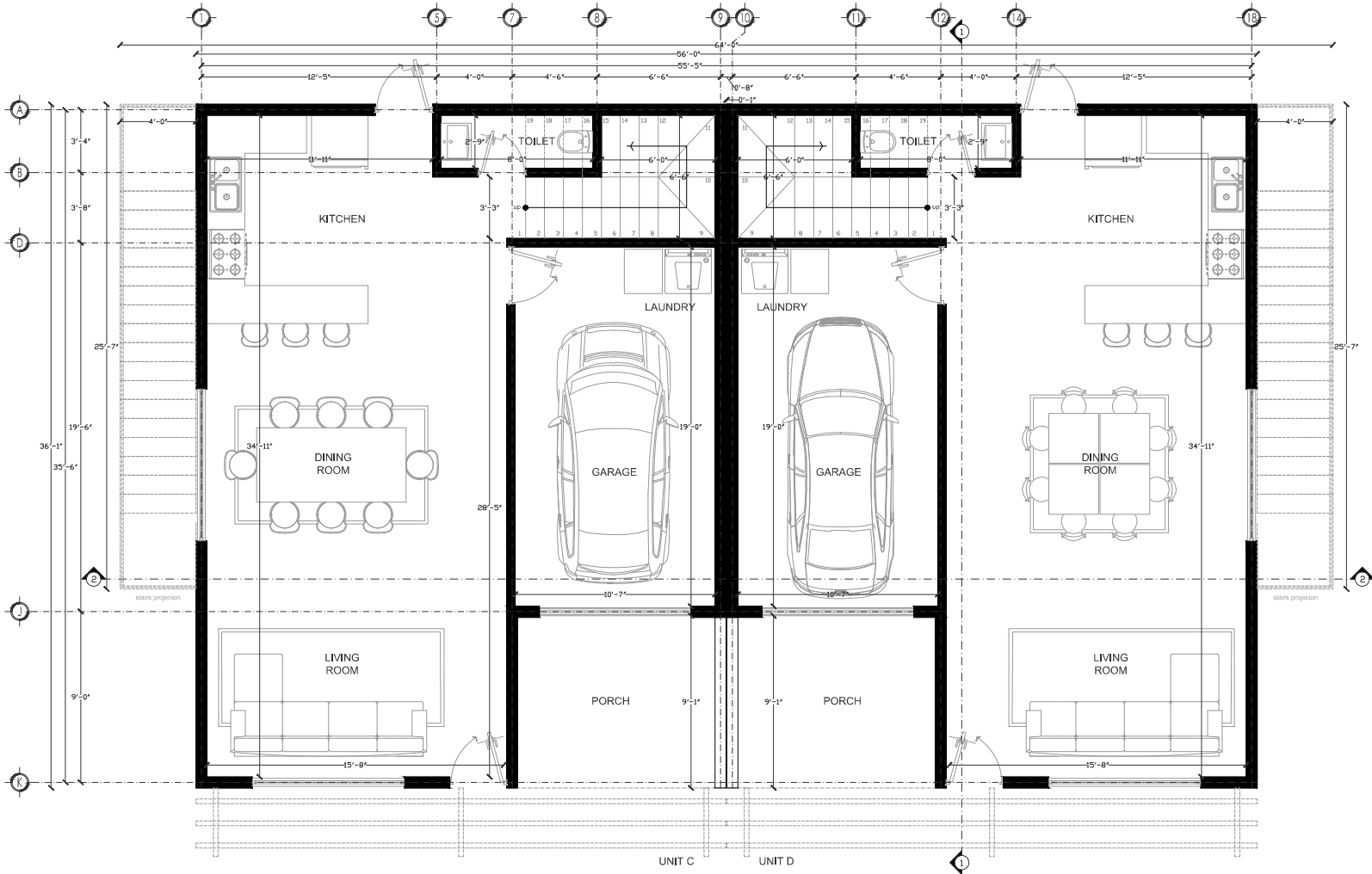
NOTES:

907 HACKBERRY
907 S HACKBERRY
SAN ANTONIO, TEXAS 78247

FIRST FLOOR PLAN DUPLEX 02

SHEET NO.

A1.01



01
MTO
DUPLEX 02 FIRST FLOOR PLAN ARCHITECTURE
3/8" = 1'-0"

NOTES:

907 HACKBERRY
907 S HACKBERRY
SAN ANTONIO, TEXAS 78247

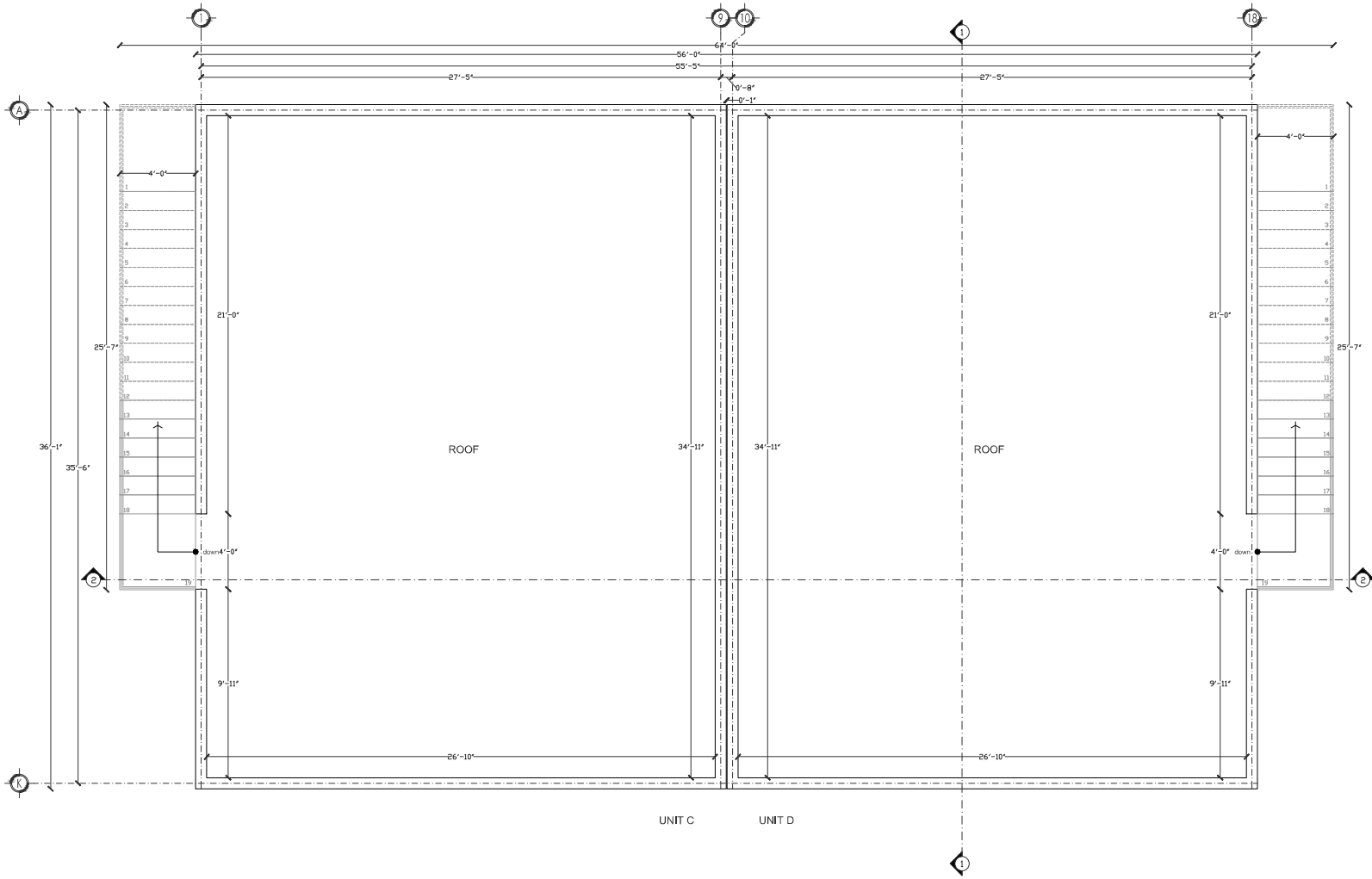
SECOND FLOOR PLAN DUPLEX 02


SHEET NO.

A1.02

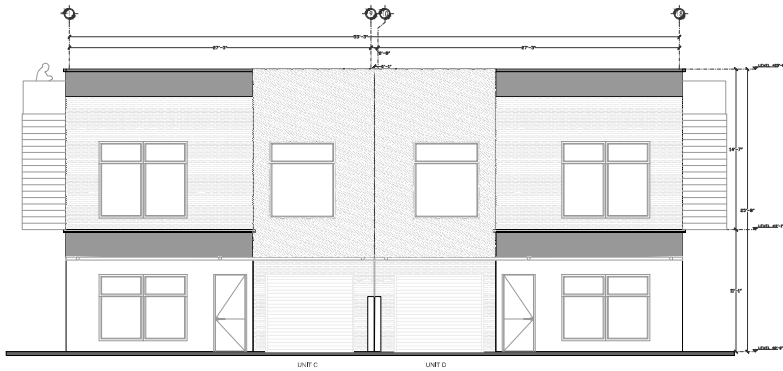


01
A1.02 DUPLEX 02 SECOND FLOOR PLAN ARCHITECTURE
3/8" = 1'-0"

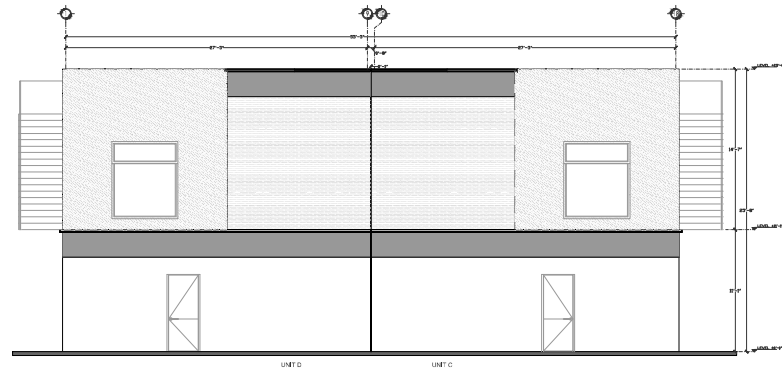



 DUPLEX 02 S CEILING PLAN ARCHITECTURE
 3/8" = 1'-0"

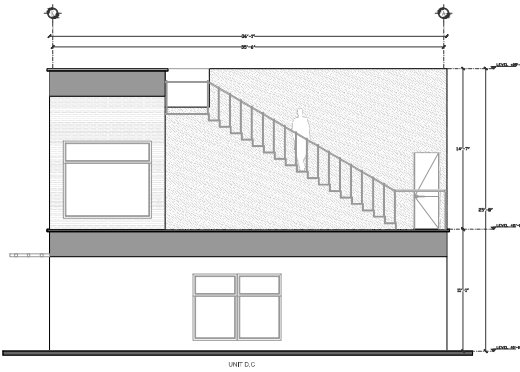
NOTES:



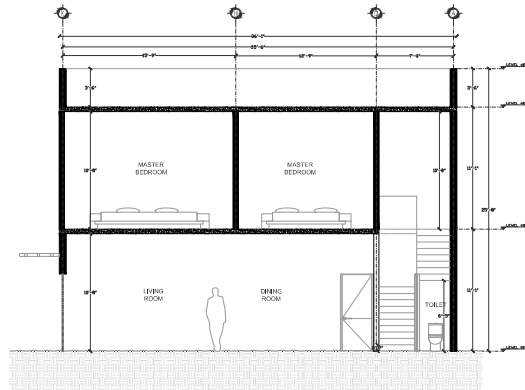
01
01/24
DUPLEX 02 FRONT ELEVATION ARCHITECTURE
3/16" = 1'-0"



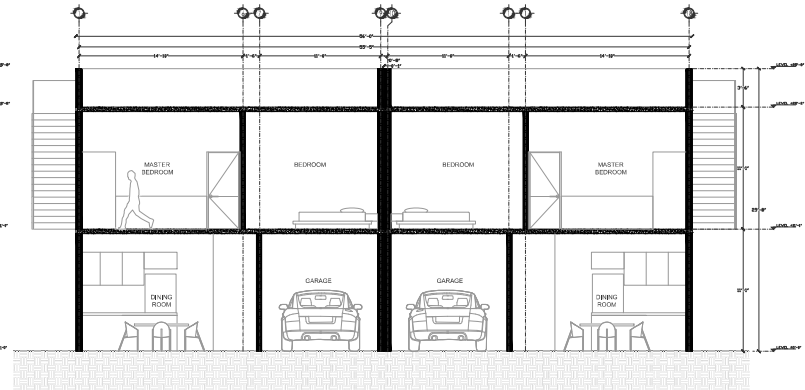
02
02/24
DUPLEX 02 BACK ELEVATION ARCHITECTURE
3/16" = 1'-0"



03
03/24
DUPLEX 02 SIDE ELEVATION ARCHITECTURE
3/16" = 1'-0"



04
04/24
DUPLEX 02 SECTION 1 ARCHITECTURE
3/16" = 1'-0"



05
05/24
DUPLEX 02 SECTION 2 ARCHITECTURE
3/16" = 1'-0"

NOTES: