

Retail Pads Available in La Grange, NC

Willie Measley Road at US 70 East
La Grange, NC 28551

±2.3 Acre and ±1.6 Acre Retail Pads

- + **LOCATION:** La Grange, NC
- + **STRATEGIC POSITION:** Along the National Freight Network (NFN) route from the Port of Morehead City, NC, to Raleigh, NC
- + **HIGH VISIBILITY:** 32,500 VPD along US 70 East
- + **TRAFFIC CAPTURE:** Local and commercial traffic along an underserved corridor
- + **HIGHWAY 70 DIVISION:**
 - + West towards Goldsboro: Hwy 70 divides into Bus 70 and the bypass
 - + East towards Kinston: Hwy 70 will branch into the future 70 Bypass and Bus 70
- + **KINSTON BYPASS:**
 - + Four-lane, median divided freeway
 - + Approximately 21 miles from U.S. 70 near La Grange to U.S. 70 near Dover
 - + Design speed of 70 mph
 - + Aims to reduce traffic congestion and delays in Lenoir, Jones, and Craven Counties



2024 DEMOGRAPHICS	1 MILE	3 MILES	5 MILES
Population	397	3,979	10,344
Households	217	1,760	4,326
Average HH Income	\$87,387	\$70,924	\$75,862
Daytime Population	695	3,538	7,828

Contact Us

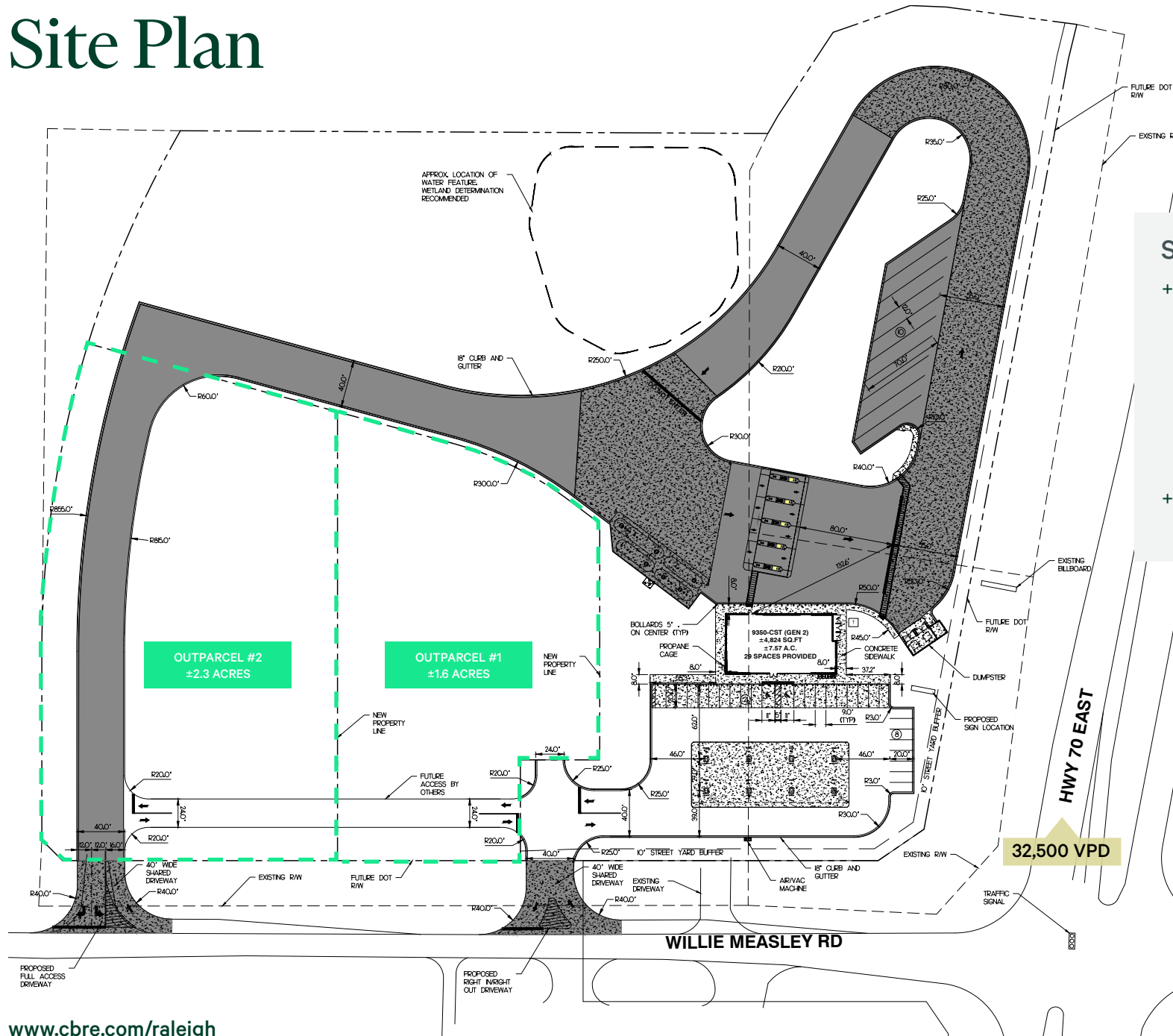
Jon Stanley
Senior Vice President
+1 919 831 8255
jon.stanley@cbre.com

Retail Pad Sites Available

Willie Measley Road at US 70 East, La Grange, NC 28551

Pads Available

Site Plan



SITE NOTES

- + Access allows for the segregation of cars and Trucks plus offers an easier egress experience for truckers from the CFL's to Willie Measley Road with the second access drive
- + RI/RO on Primary with full movement on secondary

Retail Pad Sites Available

Willie Measley Road at US 70 East, La Grange, NC 28551

Pads Available

CURRENT INTERCHANGE



FUTURE INTERCHANGE



The proposed Kinston Bypass would be a four-lane, median divided freeway (accessible via ramps at interchanges) that extends approximately 21 miles from U.S. 70 near La Grange (in Lenoir County) to U.S. 70 near Dover (on the Jones-Craven county line). The project has a design speed of 70 mph and, when complete, would help reduce traffic congestion and delays that currently exist along U.S. 70 in Lenoir, Jones and Craven County.

[WATCH THE NCDOT VIDEO ABOUT THE PROJECT](#)

Retail Pad Sites Available

Willie Measley Road at US 70 East, La Grange, NC 28551

Pads Available



© 2024 CBRE, Inc. All rights reserved. This information has been obtained from sources believed reliable but has not been verified for accuracy or completeness. CBRE, Inc. makes no guarantee, representation or warranty and accepts no responsibility or liability as to the accuracy, completeness, or reliability of the information contained herein. You should conduct a careful, independent investigation of the property and verify all information. Any reliance on this information is solely at your own risk. CBRE and the CBRE logo are service marks of CBRE, Inc. All other marks displayed on this document are the property of their respective owners, and the use of such marks does not imply any affiliation with or endorsement of CBRE.