

**200  
MAMARONECK AVE  
SUITE 303-305  
WHITE PLAINS NY**

**FOR SUBLET**



### PROPERTY INFORMATION

- 3,501 SQFT
- Elevators
- Recently Renovated Common Areas
- Operable Windows
- Convenient Public Parking Garage

**The office space is situated in the downtown district of White Plains. It has the convenience of the Cross Westchester Expressway to ensure connectivity to major business hubs, while mass transit options provide easy accessibility for clients and employees.**

### CONTACTS

PAUL MOULINS

PMoulins@kw.com

C: 914-714-3777

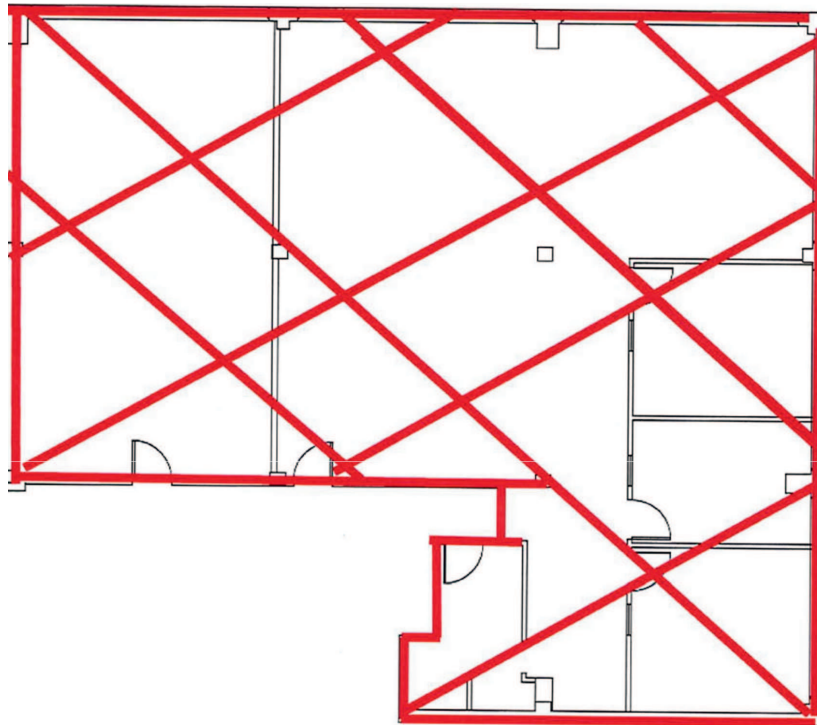
DEBBIE KNIGHT

Debbie-Knight@kw.com

C: 914-522-9256

# 200 MAMARONECK AVE, SUITE 303-305, WHITE PLAINS NY

## 3,501 SQFT - FOR SUBLET



### CONTACTS

PAUL MOULINS  
PMoulins@kw.com  
C: 914-714-3777

DEBBIE KNIGHT  
Debbie-Knight@kw.com  
C: 914-522-9258

**KW** COMMERCIAL<sup>SM</sup>  
DIVISION OF KELLER WILLIAMS REALTY GROUP

760 WHITE PLAINS RD, SCARSDALE, NY 10805 | 2300 EASTCHESTER RD, BRONX, NY 10469 | O: 914-902-8700 | KWCOMMERCIALNEWYORK.COM

The information contained herein has been obtained through sources deemed reliable but cannot be guaranteed as to its accuracy. Any information of special interest should be obtained through independent verification