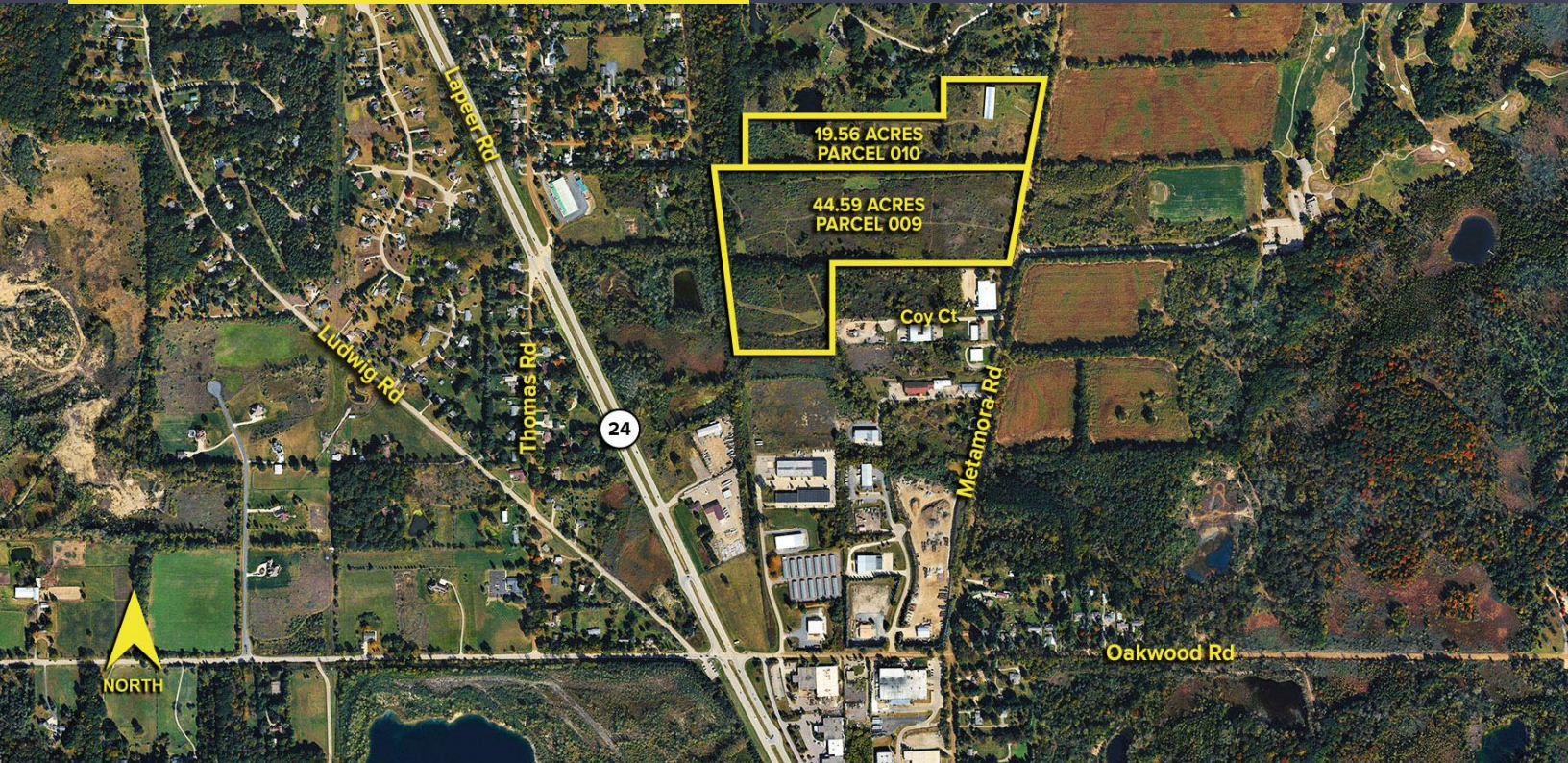


METAMORA ROAD OXFORD TWP., MICHIGAN



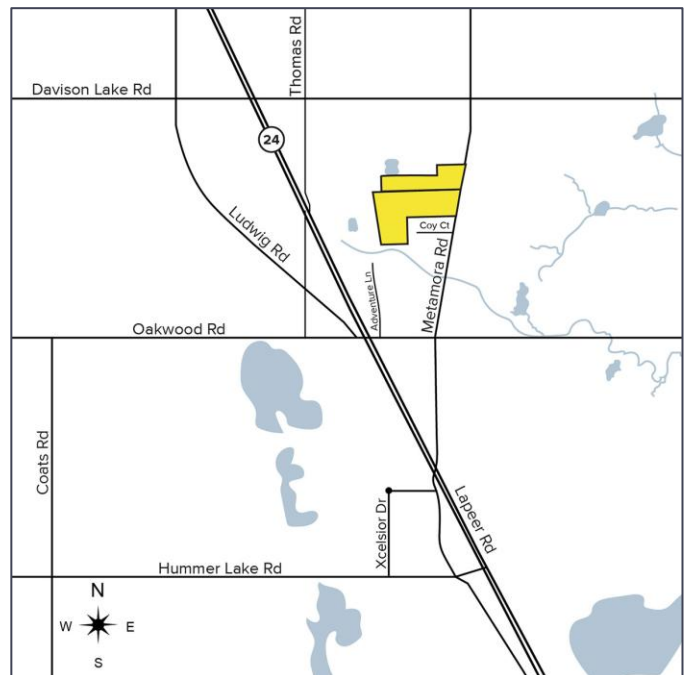
**SIGNATURE
ASSOCIATES**
KNOW SIGNATURE | KNOW RESULTS

LAND FOR SALE
64.15 Acres Available



PROPERTY FEATURES

- 64.15 acres available
- 24 stall horse farm could be beneficial to a buyer
- Golf course across the street
- Rolling land
- Close to Lapeer Road which connects Lapeer and Metamora to Auburn Hills and Orion Twp.
- Sale Price: \$2,345,000



For more information, please contact:

KRIS PAWLOWSKI

(248) 948 3801

kpawlowski@signatureassociates.com

PAUL HOGE

(248) 948 0103

paulhoge@signatureassociates.com

CHARLEY HENNEGHAN

(248) 359 3838

chenneghan@signatureassociates.com

Information is subject to verification and no liability for errors or omissions is assumed. Price is subject to change and listing withdrawal.