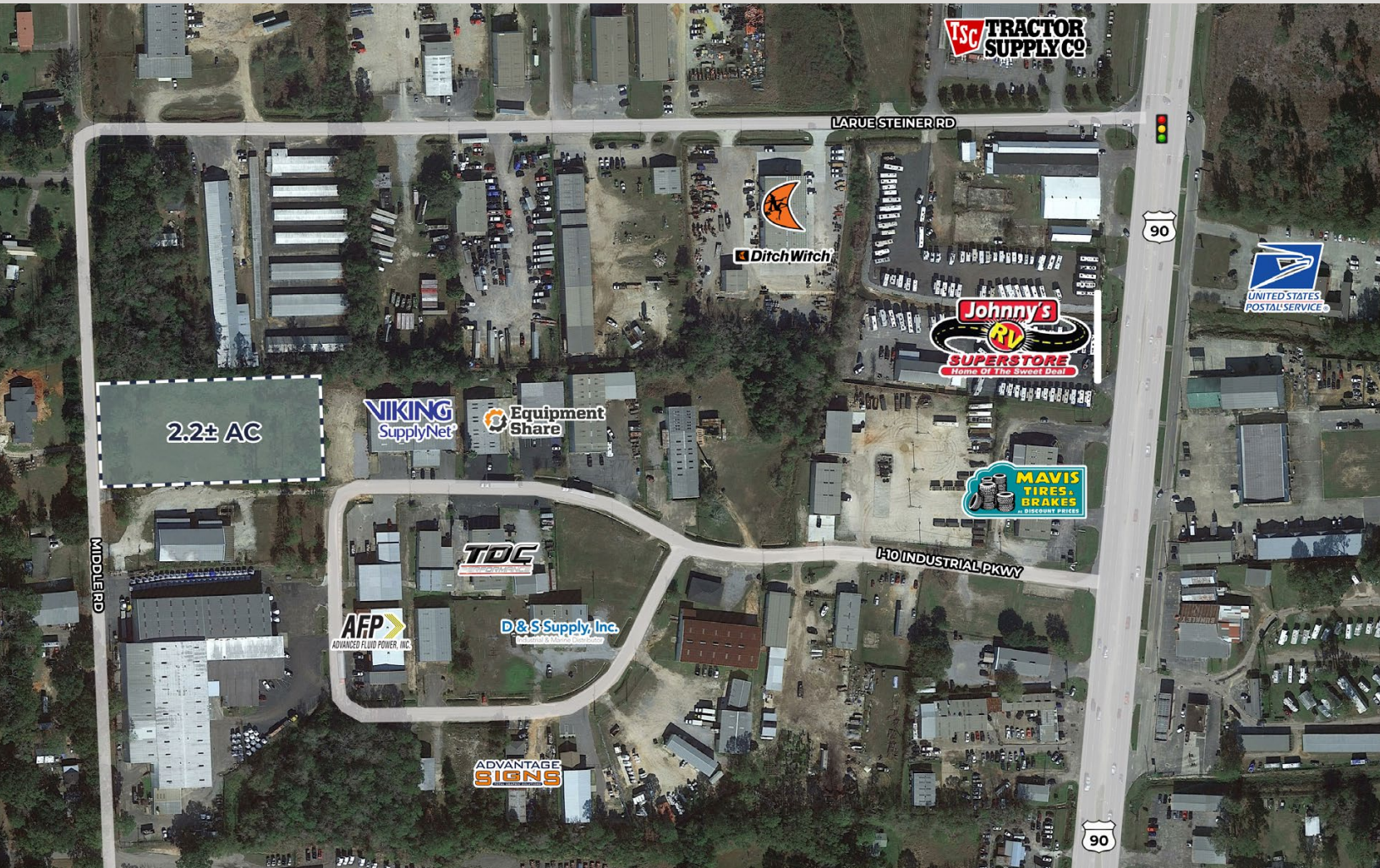


FOR LEASE

2.2± AC LOT

5880 Middle Rd | Theodore



PROPERTY DESCRIPTION:

- 2.2± AC lot
- Zoned I-1: Light Industrial
- Site improvements include crushed concrete and fencing
- Conveniently located less than two minutes from I-10 & only one exit from the 2M SF South Alabama Logistics Park with quick access to I-65 & AL Port
- Located in Tillman's Corner along the highly desired & booming I-10 corridor full of numerous industrial, showrooms, offices and more

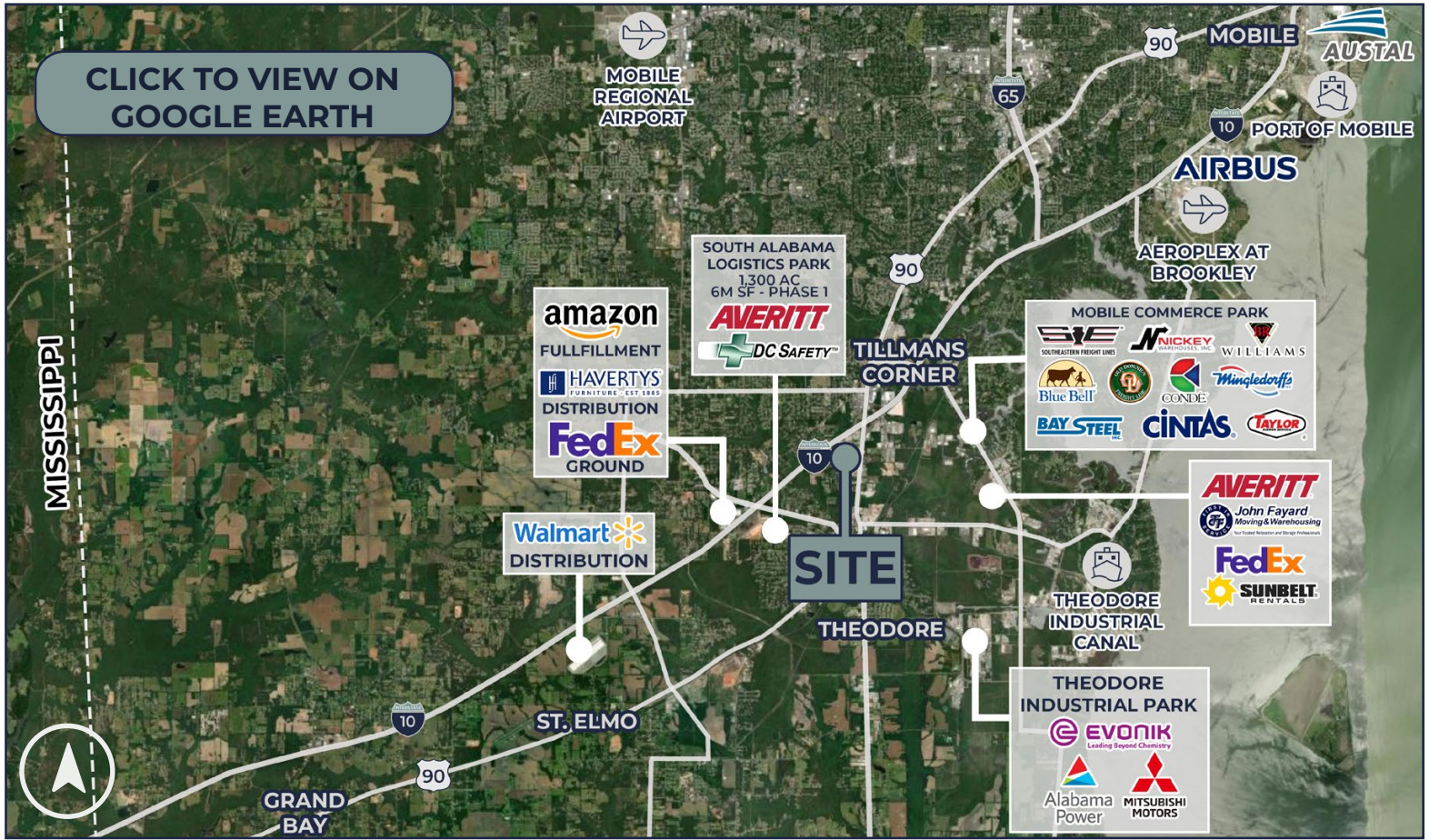
LEASE RATE: \$2,750/AC/MONTH

Tommy Gleason, CCIM
251.379.8285 | tgleason@cre-mobile.com

Pete Riehm, SIOR
251.442.4349 | priehm@cre-mobile.com



**CRE
MOBILE**
CRE-MOBILE.COM



CLICK TO VIEW ON GOOGLE EARTH



DISTANCES TO NOTABLE LOCATIONS

I-10	0.9 miles ±
I-65	5.5 miles ±
Rangeline Rd	2.5 miles ±
Aeroplex at Brookley	8 miles ±
Port of Mobile	13 miles ±
Mississippi State Line	13.5 miles ±

Distance measured as the crow flies

NO WARRANTY OR REPRESENTATION, EXPRESS OR IMPLIED, IS MADE AS TO THE ACCURACY OF THE INFORMATION CONTAINED HEREIN, AND THE SAME IS SUBMITTED SUBJECT TO ERRORS, OMISSIONS, CHANGE OF PRICE, RENTAL OR OTHER CONDITIONS, PRIOR SALE, LEASE OR FINANCING, OR WITHDRAWAL WITHOUT NOTICE, AND OF ANY SPECIAL LISTING CONDITIONS IMPOSED BY OUR PRINCIPALS. NO WARRANTIES OR REPRESENTATIONS ARE MADE AS TO THE CONDITION OF THE PROPERTY NOR ANY HAZARDS CONTAINED THEREIN ARE ANY TO BE IMPLIED.