

**AVISON
YOUNG**

Co-op Greystone Shopping Centre

264 Park Street, Cochrane, AB



Unbeatable Location in Greystone
Right Across from the SLS Recreation Centre!

Hani Abdelkader Principal
+1 403 232 4321 hani.abdelkader@avisonyoung.com

Josh Rahme Principal
+1 403 232 4333 josh.rahme@avisonyoung.com

Morena Ianniello Team Lead, Client Services
+1 587 293 3367 morena.ianniello@avisonyoung.com

Kirk Steinberg Associate
+1 403 571 4257 kirk.steinberg@avisonyoung.com

Emma MacIsaac Client Services Coordinator
+1 403 571 4256 emma.macisaac@avisonyoung.com

Highlights



Brand-New Retail Development in the heart of Cochrane, Alberta — one of the fastest-growing communities in the region.



Prime Location at 264 Park Street with easy access from Griffin Road and Park Street.



Ideal for Retail, Medical, Wellness, and QSR concepts. Anchored by Co-op, Tim Hortons, Burger King and many more national and local tenants.



Modern Design and Construction — Surrounded by Explosive Residential Growth — located near communities like River Heights, Sunset Ridge, and Southbow (projected to house 7,500+ residents).

Unbeatable Location in Greystone – Right Across from the SLS Recreation Centre!
Enjoy the best of Greystone living with direct access to the SLS Recreation Centre—just steps away from top-tier fitness and community amenities.



Particulars

ADDRESS:	264 Park Street Cochrane, AB
AVAILABLE:	B-202: 2,664 sf B-204: 2,298 sf B-218: 1,493 sf C-304: 943 sf - C/L D-410: 1,361 sf - C/L
OCCUPANCY:	Immediate
RENT:	Market
ADDITIONAL RENT:	\$14.00 psf (est. 2025)
PARKING:	Surface parking available

Photos



Demographics



Town of Cochrane


Cochrane is a town located in southern Alberta, Canada, approximately 18 miles (29 km) west of Calgary. It is situated in the foothills of the Rocky Mountains and along the banks of the Bow River.

With a population of over 35,825, Cochrane is known for its vibrant community, rich history, and scenic beauty. The town offers a range of outdoor recreational activities, including hiking, fishing, skiing, and golfing, and is home to several parks and trails.


Cochrane is also a popular tourist destination, attracting visitors with its historic downtown, which features unique shops, restaurants, and museums. The town hosts several annual events, including the Cochrane Fair and the Cochrane Winterfest, which celebrate the community's culture and traditions.

Overall, Cochrane is a welcoming and charming town with a strong sense of community and a rich natural and cultural heritage.







35,825
POPULATION



38.5
MEDIAN AGE



3,756
HOUSEHOLDS

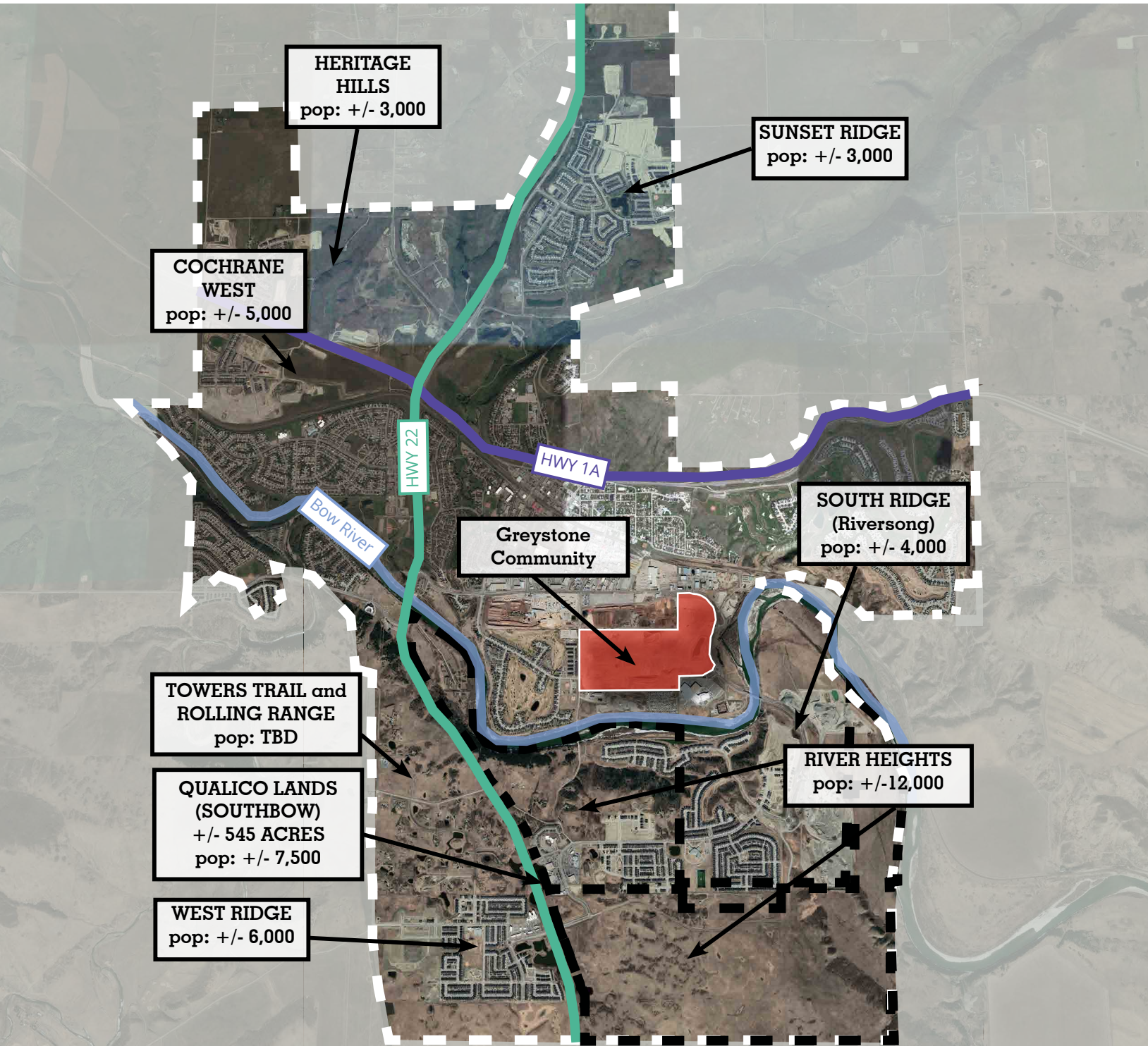


\$155,709
AVERAGE HOUSEHOLD INCOME

Upcoming Residential Growth & Estimated Population

Current total population of Cochrane is 35,825 and is expected to grow to 87,000 in the next 25 years. River Heights ASP is going to be home for 25,000 people at full buildout.

Unbeatable Location in Greystone – Right Across from the SLS Recreation Centre!
Enjoy the best of Greystone living with direct access to the SLS Recreation Centre—just steps away from top-tier fitness and community amenities.



Get more info.

Hani Abdelkader Principal
+1 403 232 4321 hani.abdelkader@avisonyoung.com

Josh Rahme Principal
+1 403 232 4333 josh.rahme@avisonyoung.com

Morena Ianniello Team Lead, Client Services
+1 587 293 3367 morena.ianniello@avisonyoung.com

Kirk Steinberg Associate
+1 403 571 4257 kirk.steinberg@avisonyoung.com

Emma MacIsaac Client Services Coordinator
+1 403 571 4256 emma.macisaac@avisonyoung.com

Visit us online
avisonyoung.com

© 2025, Avison Young. Information contained herein was obtained from sources deemed reliable and, while thought to be correct, have not been verified. Avison Young does not guarantee the accuracy or completeness of the information presented, nor assumes any responsibility or liability for any errors or omissions therein.
Eighth Avenue Place, 4300, 525 - 8th Avenue SW | Calgary, AB T2P 1G1 | +1 403 262 3082

**AVISON
YOUNG**