



HARBOUR ISLAND OFFICE CONDO FOR LEASE

**AVAILABLE
SEPT. 15TH
4,210 USF**
\$42 SF FULL SERVICE



701 S HARBOUR ISLAND BLVD. TAMPA, FL 33602

Located on the first floor, facing the channel, JW Marriott and Amellia Arena in Downtown Tampa.

Connected garage with 10 reserved, parking spaces.
Exterior signage available.

PROPERTY DETAIL



NO COMMON AREA FACTOR

- Useable Square Feet (USF), no common area factor, 100% of the SF the Tenant uses



PRIME LOCATION

- Surrounded by numerous hotels and restaurants such as Starbucks, Jackson's Bistro and the several along the iconic, Waterstreet Development



EASILY ACCESSIBLE

- Minutes from key highways such as i-275 and LeRoy Selmons Expressway
- 2 min. from Tampa Convention Center
- 20 min. to Tampa International Airport

CHELSEA DRINKARD

813-289-3700

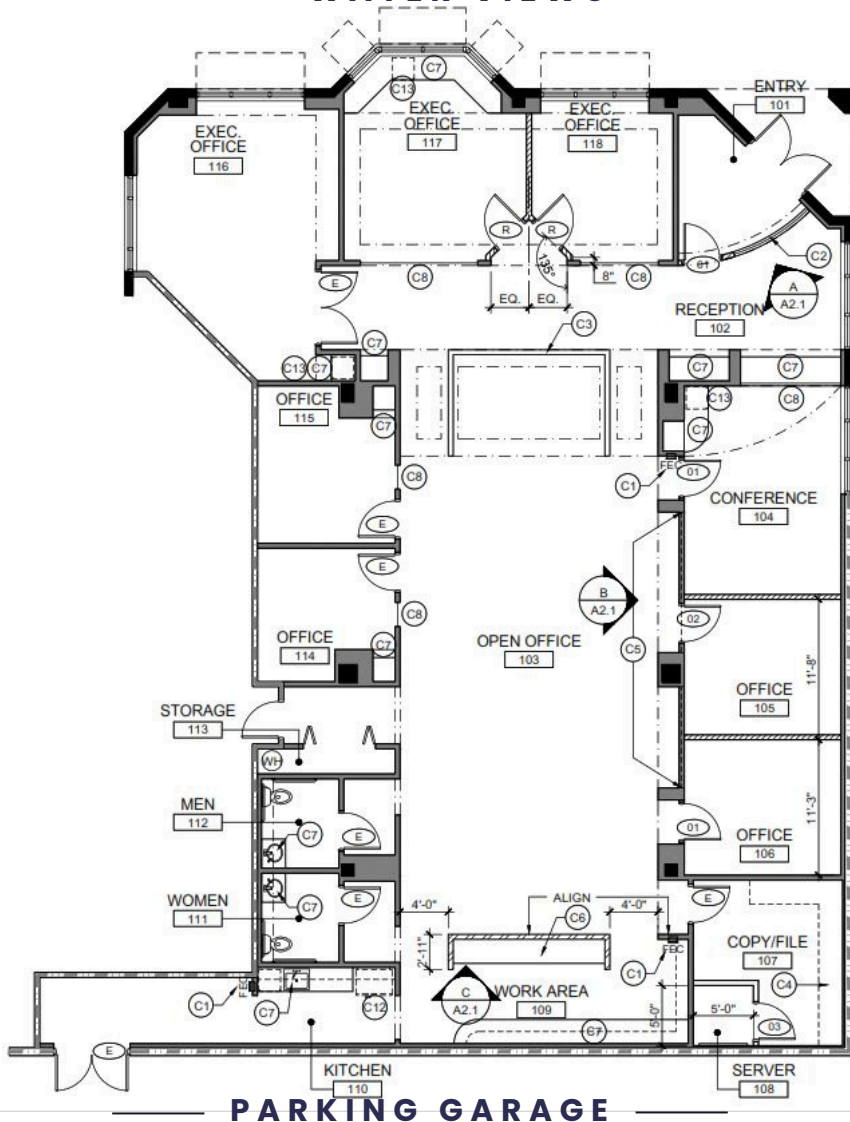
cd@officespacebrokers.com





CLICK FOR INTERIOR
VIDEO TOUR

WATER VIEWS



4,210 USF FLOOR PLAN:

- DOUBLE DOOR RECEPTION AREA
- 4 WINDOWED OFFICES FACING THE WATER
- 4 INTERIOR OFFICES
- IT/STORAGE
- OPEN OFFICE AREA
- KITCHEN
- 2 RESTROOMS