

BIG PARK SCHOOL CAMPUS

EXCLUSIVE LISTING | LOCATED IN THE HEART OF THE VILLAGE OF OAK CREEK



CONTACT FOR MORE INFORMATION

Michele Pino
mpino@landadvisors.com
480.874.4324

Laurie Sandau
lsandau@landadvisors.com
480.874.4321

Capri Barney
cbarney@landadvisors.com
928.445.4457



928.445.4457 | LandAdvisors.com



EXECUTIVE SUMMARY



LOCATION

25 West Saddlehorn Road, Sedona, Arizona 86351 (Yavapai County)



SIZE

Land: ±20.38 Acres

Buildings: ±69,712 SF constructed in 1990 and 2008 (Multipurpose building)

Classrooms: 29 in 5 buildings, one multipurpose building (5,046 SF), front office, library, gymnasium, and cafeteria.

Fire sprinkler, AC and centralized cooling tower and boiler system (1,504 SF maintenance room)



PARCELS

405-27-006C



ZONING

R1L-18 (Residential)



UTILITIES

Water: Arizona Water Company (Sedona)

Gas: UNS Gas, Inc.

Electric: Arizona Public Service

Sewer: Big Park



VIDEO TOUR

[Click link to view Property Video](#)



COMMENTS

Considerations of the property's unique features and surrounding are include:

- The scarcity of development opportunities in the area.
- The spectacular views of the world-renowned red rock mountains from the site.
- The recreational amenities within minutes from the property include three public golf courses, the national forest, year-round Oak Creek, hiking and biking trails, and world class restaurants, shopping, and art galleries.



PROPERTY SUMMARY

Nestled in the heart of The Village of Oak Creek, the Big Park School Campus is a unique property in an extraordinary location. The property offers breathtaking views of Sedona's iconic red rock buttes and is only a short distance to Oak Creek and the vibrant shops and restaurants in both The Village of Oak Creek and Sedona. The current facilities would be ideal for a community or culture center, vocational or specialized training facility, senior activity center, or health and wellness campus. The property also offers a redevelopment opportunity for a premier residential community designed for those seeking an extraordinary lifestyle in this spectacular setting.



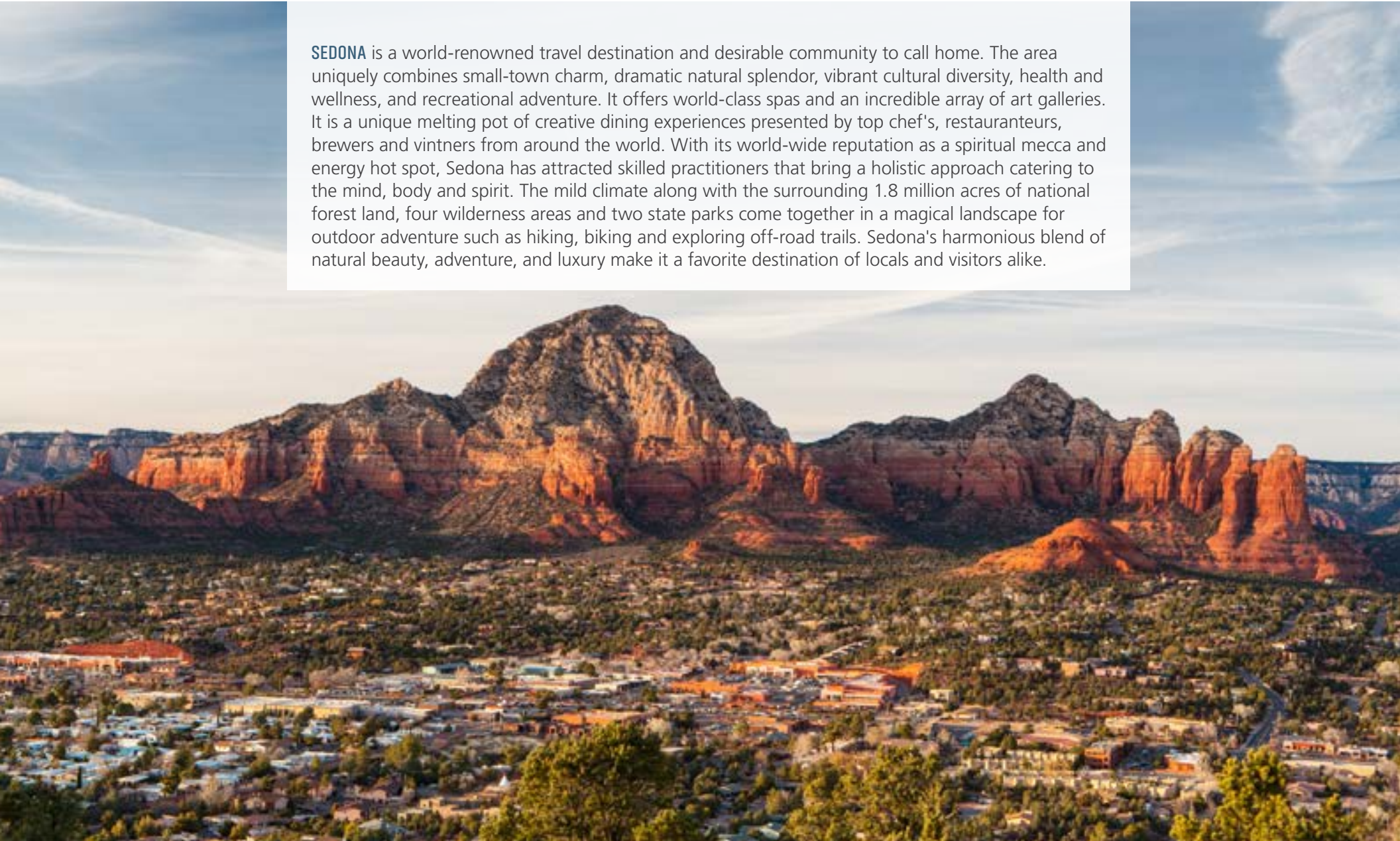
DEMOGRAPHICS

	1 Mile	3 Miles	5 Miles
The Village of Oak Creek			
2025 Population	3,582	6,424	8,350
2030 Population	3,601	6,475	8,436
2025 Median Income	\$78,579	\$81,817	\$83,893
2030 Median Income	\$87,971	\$97,010	\$98,554

AREA INFORMATION



SEDONA is a world-renowned travel destination and desirable community to call home. The area uniquely combines small-town charm, dramatic natural splendor, vibrant cultural diversity, health and wellness, and recreational adventure. It offers world-class spas and an incredible array of art galleries. It is a unique melting pot of creative dining experiences presented by top chef's, restaurateurs, brewers and vintners from around the world. With its world-wide reputation as a spiritual mecca and energy hot spot, Sedona has attracted skilled practitioners that bring a holistic approach catering to the mind, body and spirit. The mild climate along with the surrounding 1.8 million acres of national forest land, four wilderness areas and two state parks come together in a magical landscape for outdoor adventure such as hiking, biking and exploring off-road trails. Sedona's harmonious blend of natural beauty, adventure, and luxury make it a favorite destination of locals and visitors alike.



DETAIL | SEDONA OAK CREEK UNIFIED SCHOOL DISTRICT

Michele Pino | Laurie Sandau | Capri Barney | 480.483.8100 | landadvisors.com



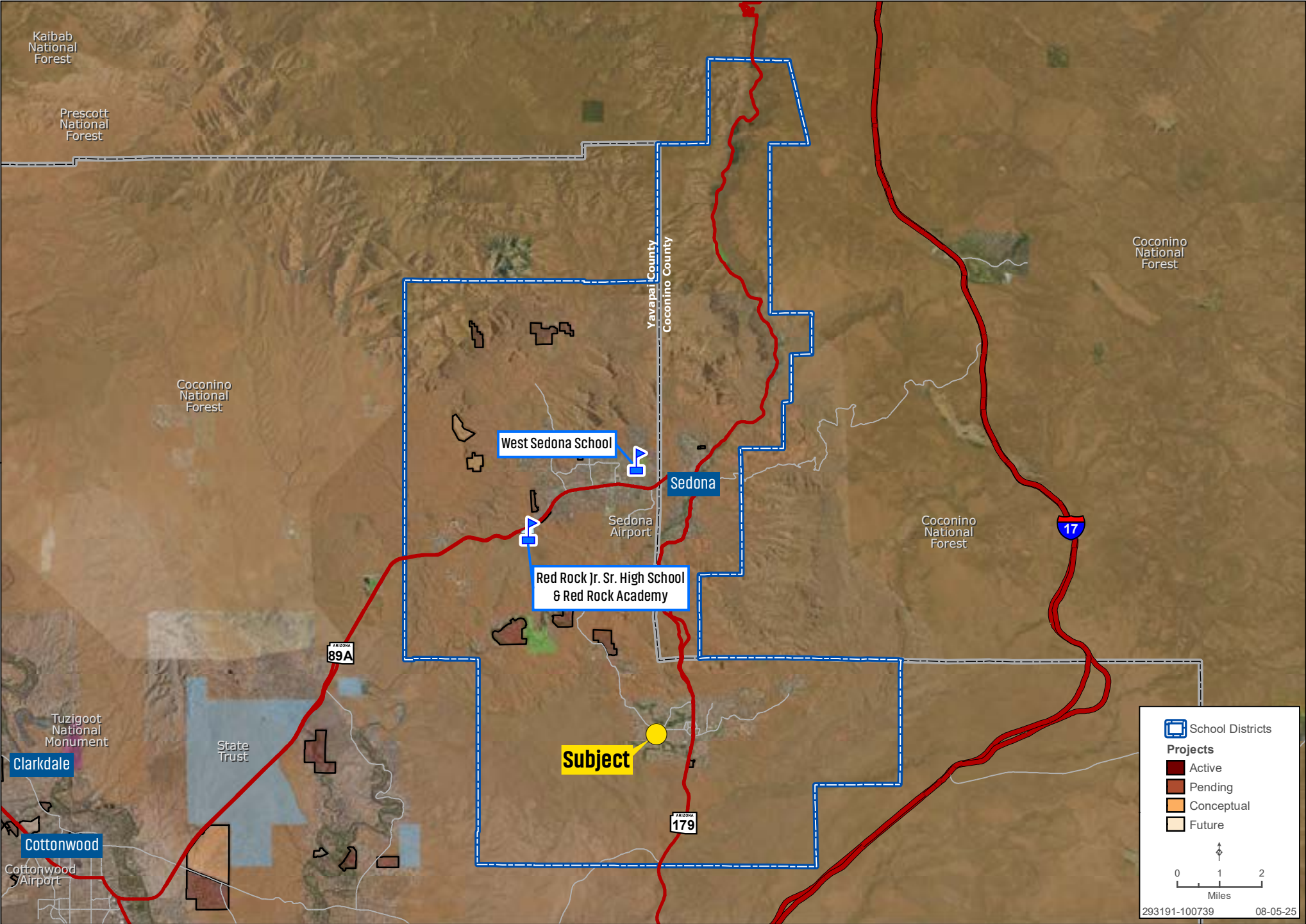
AREA | SEDONA OAK CREEK UNIFIED SCHOOL DISTRICT

Michele Pino | Laurie Sandau | Capri Barney | 480.483.8100 | landadvisors.com



REGIONAL | SEDONA OAK CREEK UNIFIED SCHOOL DISTRICT

Michele Pino | Laurie Sandau | Capri Barney | 480.483.8100 | landadvisors.com



PROPERTY PHOTOS





SCOTTSDALE, ARIZONA
4900 North Scottsdale Road
Suite 3000
Scottsdale, Arizona 85251
928.445.4457
LandAdvisors.com

The information in this document and any attachments regarding any property has been obtained from sources believed reliable, but we have not verified it and we make no guarantee, warranty, or representation as to its accuracy or completeness, and we do not undertake to update or correct any of the information presented. Any projections, opinions, assumptions, or estimates ("forward-looking statements") used are, for example, only and do not represent the current or future performance of the property and actual results may differ materially from such forward-looking statement due to, without limitation, changes in: (i) the market, (ii) governmental legal, regulatory or permitted use changes, and (iii) other factors. You and your advisors should conduct a careful, independent investigation of the property to determine to your satisfaction the property's suitability for your needs. Any reliance on this information is at your own risk and is subject to change, prior sale or complete withdrawal. AZYavapai293191 - 11.18.2025.