



**CONTACT LEASING TEAM:**

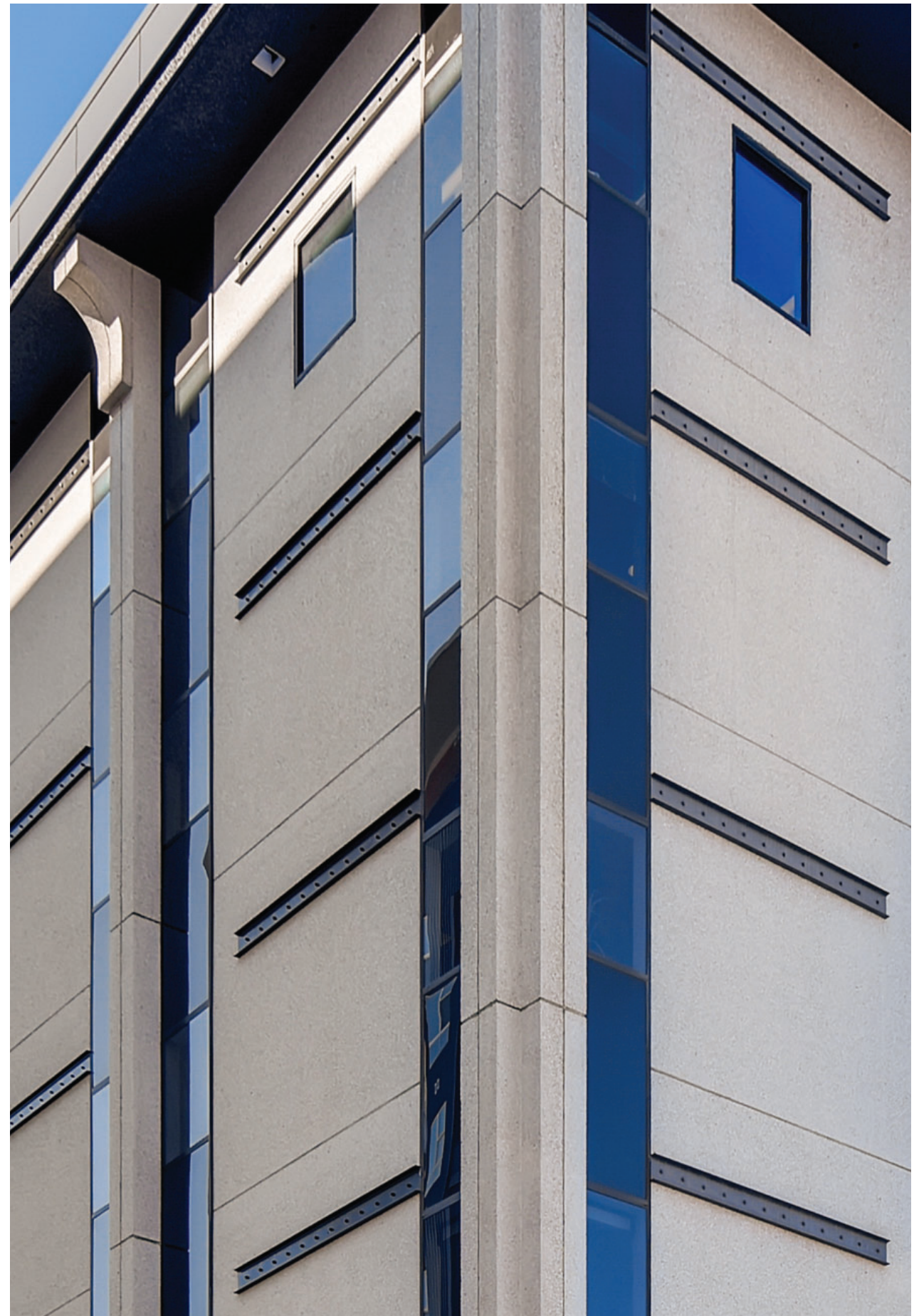


**BLAKE HOLCOMB** 303 957 5310 · [blake.holcomb@streamrealty.com](mailto:blake.holcomb@streamrealty.com)  
**JUDD ROBERTSON** 303 957 5303 · [judson.robertson@streamrealty.com](mailto:judson.robertson@streamrealty.com)  
Stream Realty Partners - Denver L.P.

© Stream Realty Partners, L.P. All information contained herein was obtained from sources deemed reliable.

Your new  
office awaits

3300  
E 1ST



Make Cherry  
Creek yours

3300  
E 1ST







# Your Cherry Creek access point

## DRIVE TIMES

Cherry Creek North	<5 MIN
Washington Park	7 MIN
Virginia Village	9 MIN
Colorado Blvd. / I-25	10 MIN
Downtown Denver	10 MIN
South Pearl Street	13 MIN
Colorado Blvd. / I-70	15 MIN



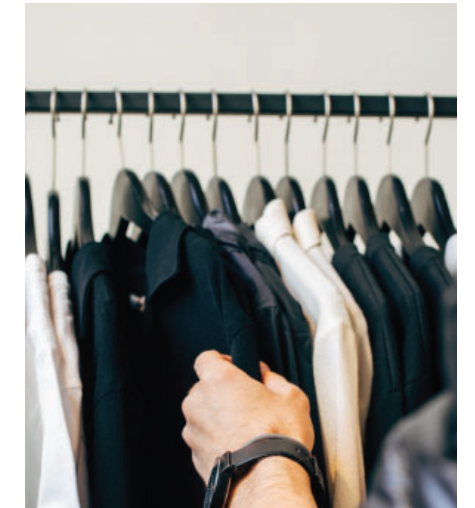


# Your new work experience



RECENTLY RENOVATED LOBBY AND COMMON AREAS

MODERN, CLASS A FINISHES THROUGHOUT



STEPS FROM FINE DINING AND  
HIGH-END RETAIL



SWEAT SESSION ON DEMAND AT  
ZONE FITNESS' ON-SITE LOCATION

3300  
E 1ST





GRAB BREAKFAST AND COFFEE OR ENJOY A PATIO LUNCH AT OLIVE & FINCH ON-SITE



WHITE BOX SPACE READY FOR YOUR MARK

MOVE-IN READY SPEC SUITES



**PROPERTY DETAILS**

**Address:** 3300 E 1st Avenue | Denver, Colorado  
**RBA:** 93,306 square feet  
**Floors:** Six (6)  
**Parking ratio:** 2.0:1,000

**FEATURES**

Recently renovated with modern, Class A finishes  
Directly accessible adjacent garage parking  
Shared conference room  
Monument signage available  
Ideal Cherry Creek location with superior access  
Spec suites and white box space available



3300  
E 1ST



# Abundant on-site & walkable amenities

## WALKABLE AMENITIES



on-site amenities



83

Walk Score

45+

Restaurants\*

145+

Retail/fitness\*

\*within Cherry Creek

