

FOR LEASE
Office/Medical

STARK
ACCELERATORS
COMMERCIAL REAL ESTATE

211 East Logan Street—Logan Plaza
CALDWELL, ID 83605

2,650± SF CALDWELL OFFICE/MEDICAL SUITE FOR LEASE



PROPERTY DESCRIPTION

- Excellent Office/Medical Plaza located next to West Valley Medical Center Hospital
- Suite 203 is a second floor unit with 8 Offices, Reception, Conference, Break Room, Copy Room, Storage and 2 Restrooms
- Gas & Electric included in NNN expenses Estimated at \$6.25/SF/Year
- Ample Parking

PROPERTY HIGHLIGHTS

- Located off of I-84 to 10th Avenue—Across from West Valley Medical Center
- Contact Agent for Showings
- Ideal location for:
 - Audiology/Hearing Center
 - Dental/Orthodontics
 - Accounting/Financial
 - Engineering/Architecture
 - Law Offices
 - Chiropractic/Massage
 - Medical Practice/Nursing

OFFERING SUMMARY

SF AVAILABLE	PRICE/SF/YEAR
2,650± SF	\$17.00
LEASE TERMS	BUILDING SIZE
NNN	21,836± SF
ZONING	TI ALLOWANCE
C-1	Negotiable

Distance from Logan Plaza:
to I-84 ± 4 minutes
to Nampa ±11 minutes
to Boise ± 35 minutes
to Ontario ±30 minutes

STEVE YATES

ID LICENSE: AB23900

Cell: **208-830-3173**



Main Office

208-722-2400

DENNIS KELLEY

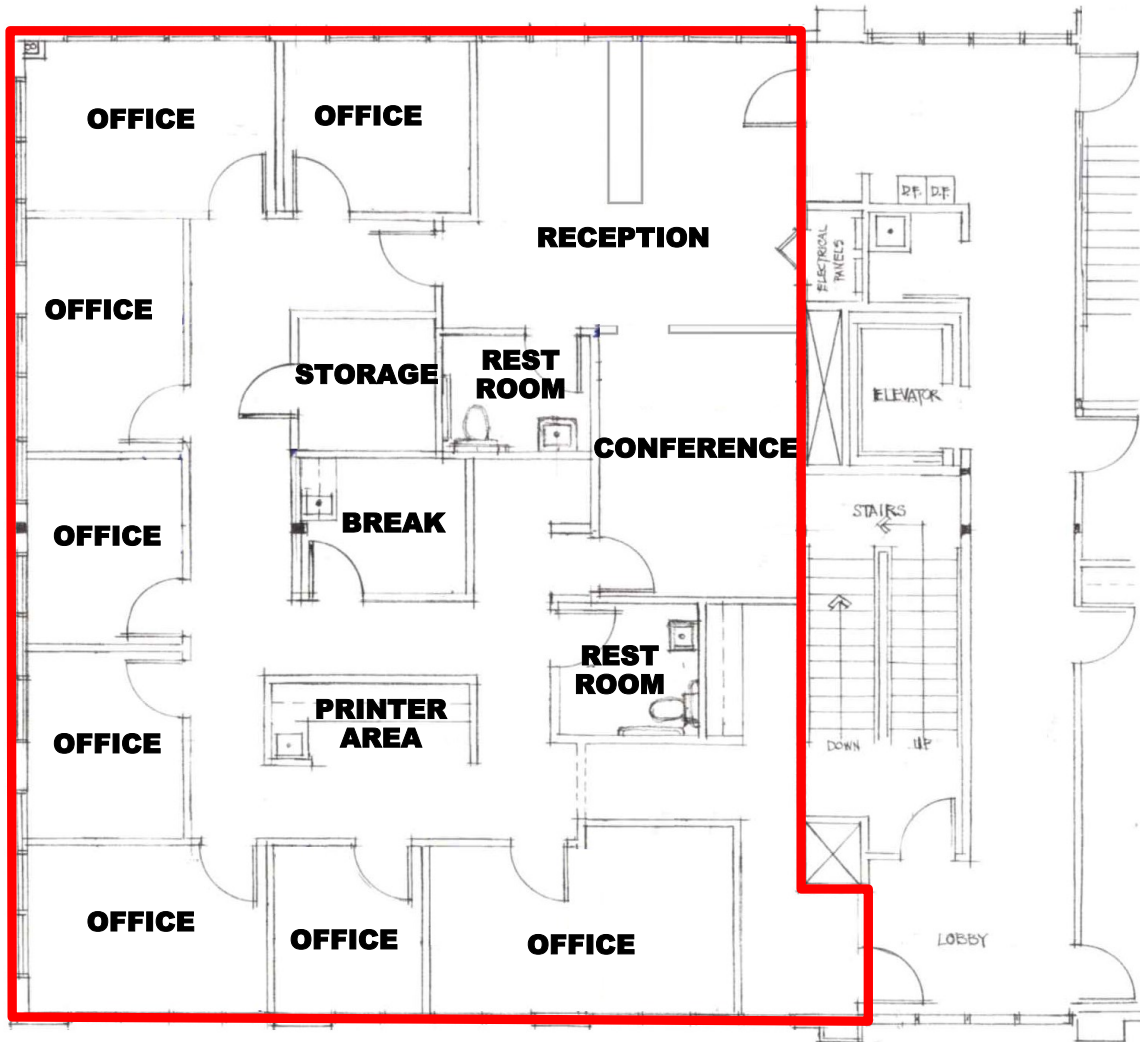
ID LICENSE: AB4297

Cell: **208-890-7700**

FOR LEASE
Office/Medical

211 East Logan Street—Logan Plaza
CALDWELL, ID 83605

2,650± SF
CALDWELL
OFFICE/MEDICAL
FOR LEASE



STEVE YATES

ID LICENSE: AB23900

CELL: 208-830-3173

EMAIL: SYates@stark.realestate




DENNIS KELLEY

ID LICENSE: AB4297

CELL: 208-890-7700

EMAIL: DKelley@stark.realestate

STARK
ACCELERATORS
COMMERCIAL REAL ESTATE

-  Office: 208-722-2400
-  WWW.STARK.REALESTATE
-  3100 N Lake Harbor Ln, Suite 166, Boise, Idaho 83703

Although all information is obtained from sources deemed reliable, we make no guarantee, warranty, expressed or implied, or representation as to the accuracy of content or other conditions, prior sales, leasing, financing, or withdrawals without notice.