

LEASE PLAN PREPARED BY:



DRAWING PREPARED FOR:



BLOCK C-1 SITE DATA

SHOPPING CENTER TRACT	9.08 ACRES
HOBBY LOBBY TRACT (C-1A)	3.79 ACRES
OUTPARCEL C-7 (SHOP) TRACT	2.51 ACRES
OUTPARCEL TRACTS	2.02 ACRES
ROADWAY TRACT	1.10 ACRES
DETENTION TRACT	4.12 ACRES
TOTAL	22.62 ACRES

BLOCK C-1 BUILDING DATA

HOBBY LOBBY (C-1A)	55,000 S.F.
BURLINGTON	25,090 S.F.
MARSHALLS	23,000 S.F.
ROSS DRESS FOR LESS	22,000 S.F.
OLD NAVY	12,500 S.F.
ULTA	10,150 S.F.
FIVE BELOW	9,486 S.F.
TOTAL	169,226 S.F.

BLOCK C-1 PARKING DATA

PARKING PROVIDED	713 SPACES
PARKING REQUIRED @ 4 SPACES PER 1,000 S.F.	629 SPACES

OUTPARCEL C-7 BUILDING DATA

SHOP 1	10,500 S.F.
SHOP 2	8,400 S.F.
TOTAL	18,900 S.F.

OUTPARCEL C-7 PARKING DATA

PARKING PROVIDED	135 SPACES
PARKING REQUIRED @ 4 SPACES PER 1,000 S.F.	77 SPACES

BLOCK C-2 SITE DATA

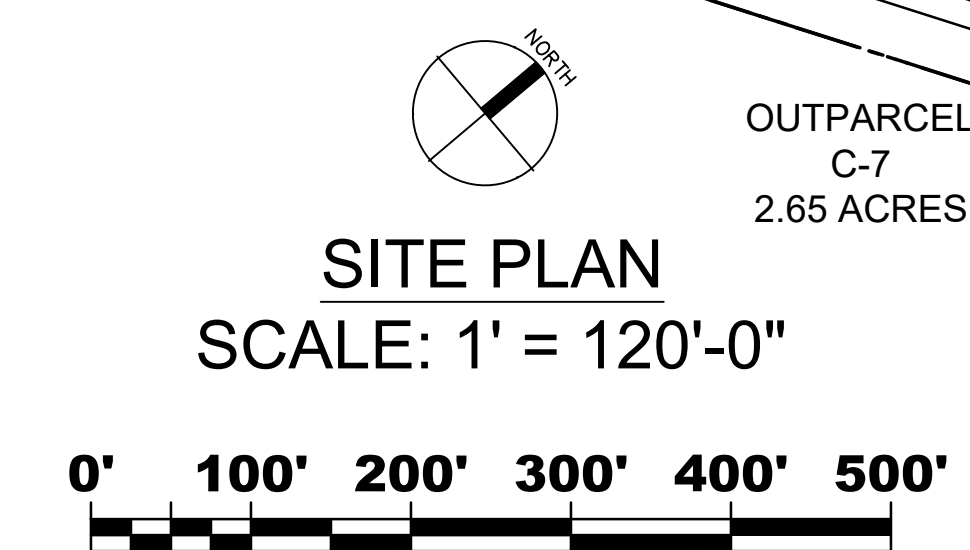
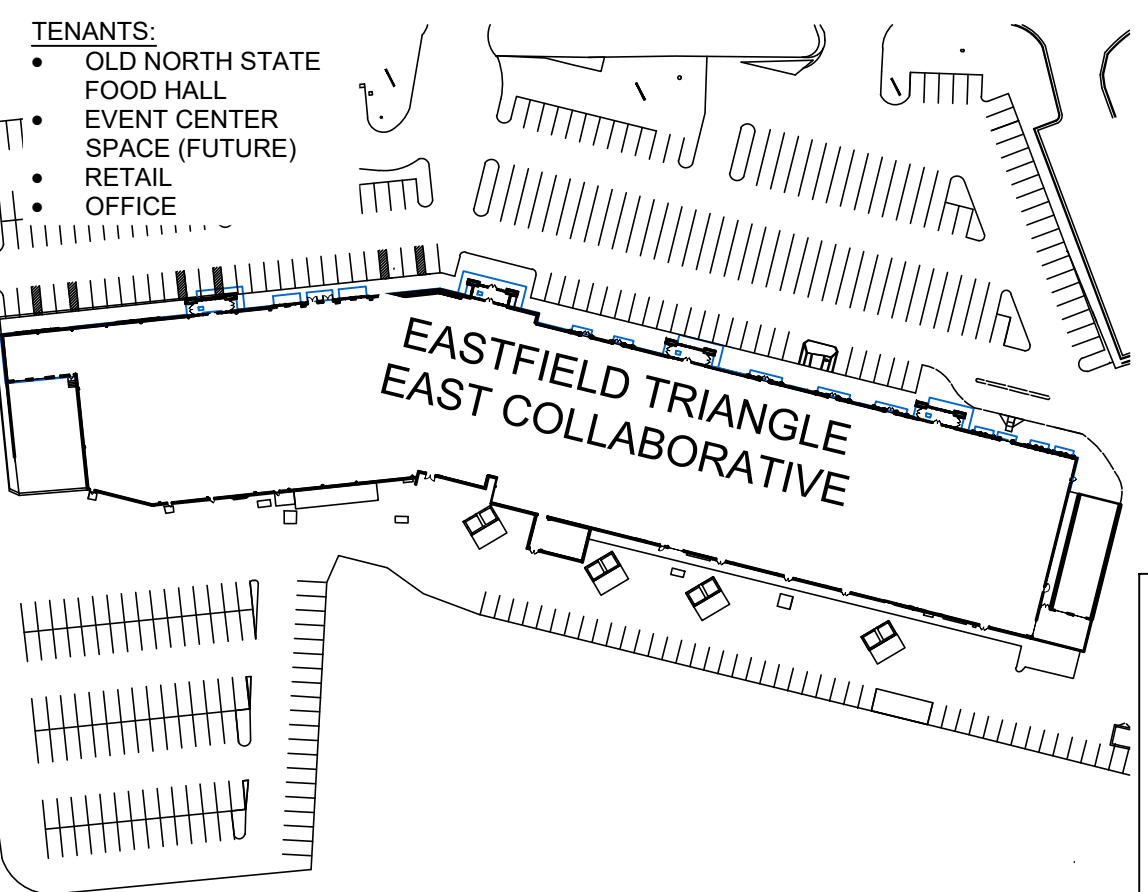
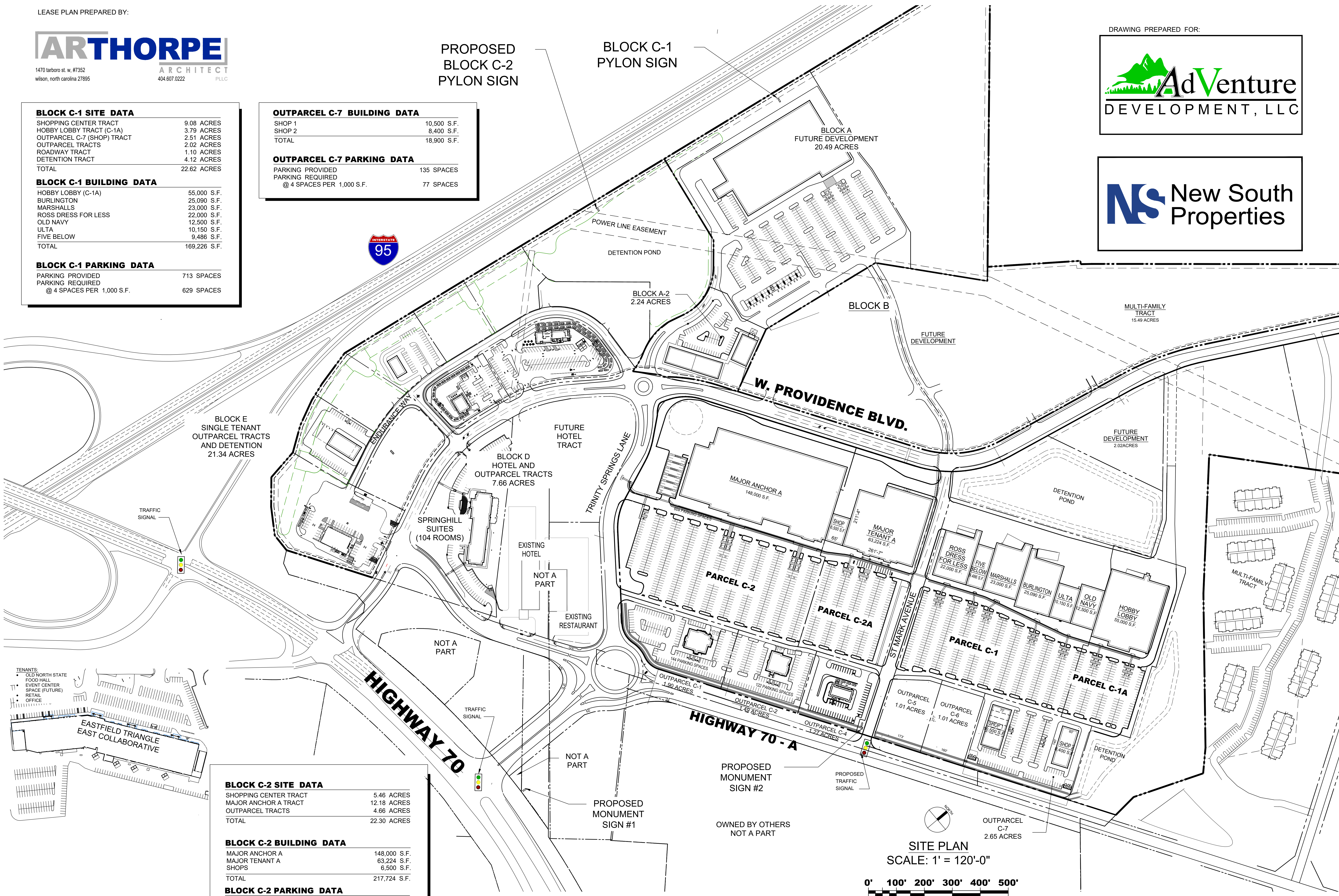
SHOPPING CENTER TRACT	5.46 ACRES
MAJOR ANCHOR A TRACT	12.18 ACRES
OUTPARCEL TRACTS	4.66 ACRES
TOTAL	22.30 ACRES

BLOCK C-2 BUILDING DATA

MAJOR ANCHOR A	148,000 S.F.
MAJOR TENANT A	63,224 S.F.
SHOPS	6,500 S.F.
TOTAL	217,724 S.F.

BLOCK C-2 PARKING DATA

PARKING PROVIDED	893 SPACES
PARKING REQUIRED @ 4 SPACES PER 1,000 S.F.	871 SPACES



EASTFIELD CROSSING
SELMA, NORTH CAROLINA

DRAWING PREPARED DECEMBER 11, 2023 © COPYRIGHT 2023, A R THORPE ARCHITECT PLLC

ALL INFORMATION HEREIN IS PRELIMINARY AND SUBJECT TO CHANGE AND IS NEITHER A REPRESENTATION, WARRANTY, OR AGREEMENT. NEITHER IS THERE ANY REPRESENTATION, WARRANTY, OR AGREEMENT THAT PROSPECTIVE TENANTS SHOWN HEREIN WILL BE TENANTS OF THE SHOPPING CENTER AT THE LOCATION SHOWN OR AT ANY OTHER LOCATIONS IN THE SHOPPING CENTER. THE INFORMATION PROVIDED HEREIN IS BASED IN PART FROM INFORMATION WHICH HAS BEEN OBTAINED FROM SOURCES THAT WE DEEM RELIABLE, HOWEVER, WE ASSUME NO RESPONSIBILITY FOR ACCURACY.