

FOR LEASE | OFFICE/RETAIL SPACE

27 WASHINGTON STREET BIDDEFORD, ME 04005



PROPERTY DETAILS

- Historic masonry building originally constructed in 1914 as a post office and formerly the home of York County's Courthouse.
- Ready for tenant improvements and completion of new systems including LED lighting, energy efficient windows, HVAC, elevator and interior finishes.
- Easily accessed from Maine Turnpike Exit 32
- One block from Biddeford's Main Street and in close proximity to several new restaurants and cafes
- Dedicated, on-site parking plus additional parking available in adjacent city-owned parking lot
- Lease Rate: \$10.00-12.00/sf NNN



FOR LEASE | OFFICE/RETAIL SPACE

27 WASHINGTON STREET BIDDEFORD, ME 04005



PROPERTY DETAILS

OWNER	27 Washington LLC
BUILDING SIZE	9,789 SF±
LOT SIZE	0.33 Acres±
ASSESSOR	Map 38, Lot 353
AVAILABLE SPACE	3,802 - 9,789 SF± First Floor: 5,072 SF± First Floor + Mezzanine: 5,987 SF± Lower Level: 3,802 SF±
HVAC	Oil-fired heat; Central A/C
YEAR BUILT	1914
ZONING	MSRD1
UTILITIES	Municipal water and sewer
ELEVATOR	To be installed
PARKING	11± dedicated spaces on-site, plus additional parking available in adjacent city-owned parking lot.
LEASE RATE	\$10.00 - 12.00 SF/yr (NNN)

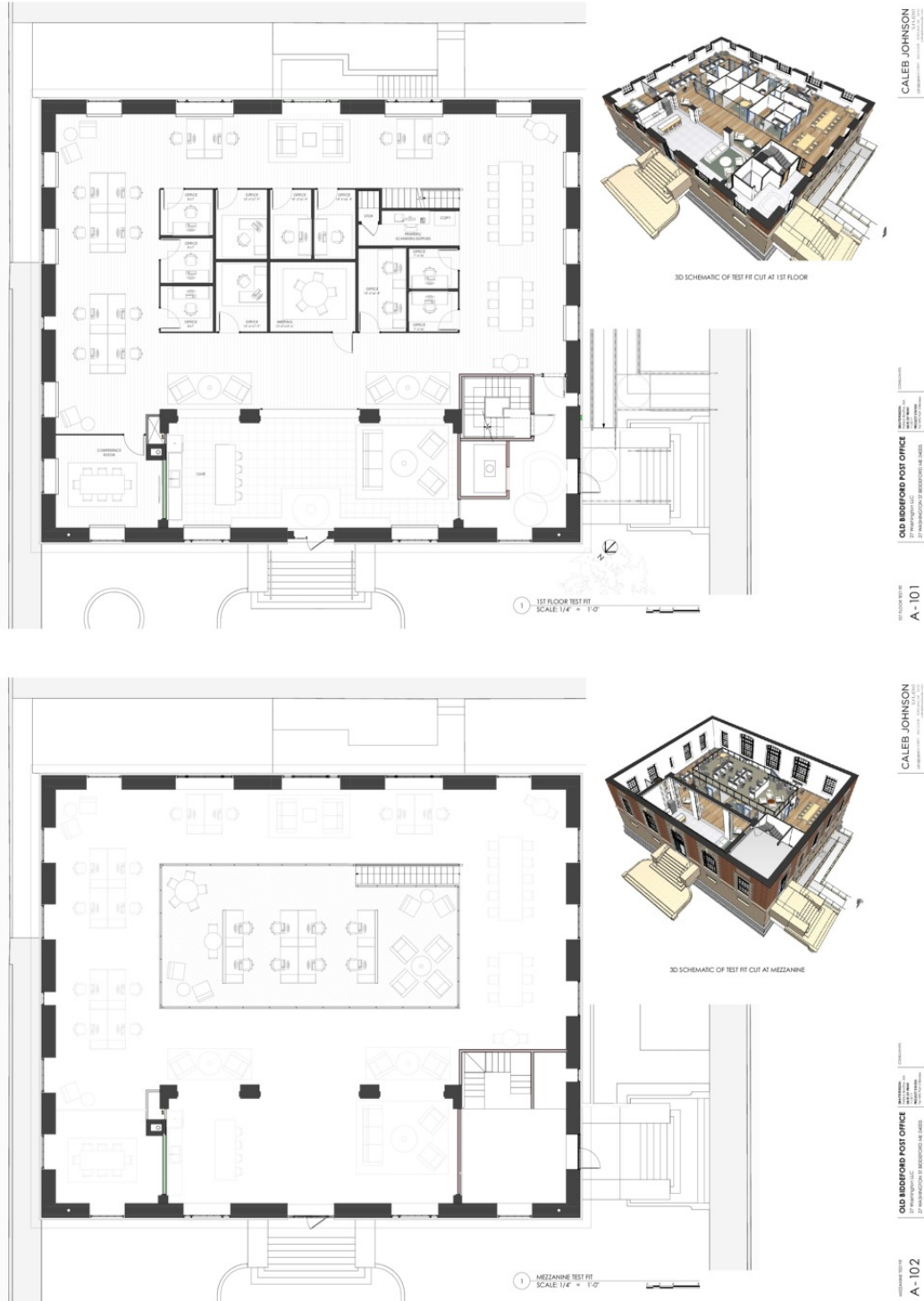


FOR LEASE | OFFICE/RETAIL SPACE

27 WASHINGTON STREET BIDDEFORD, ME 04005

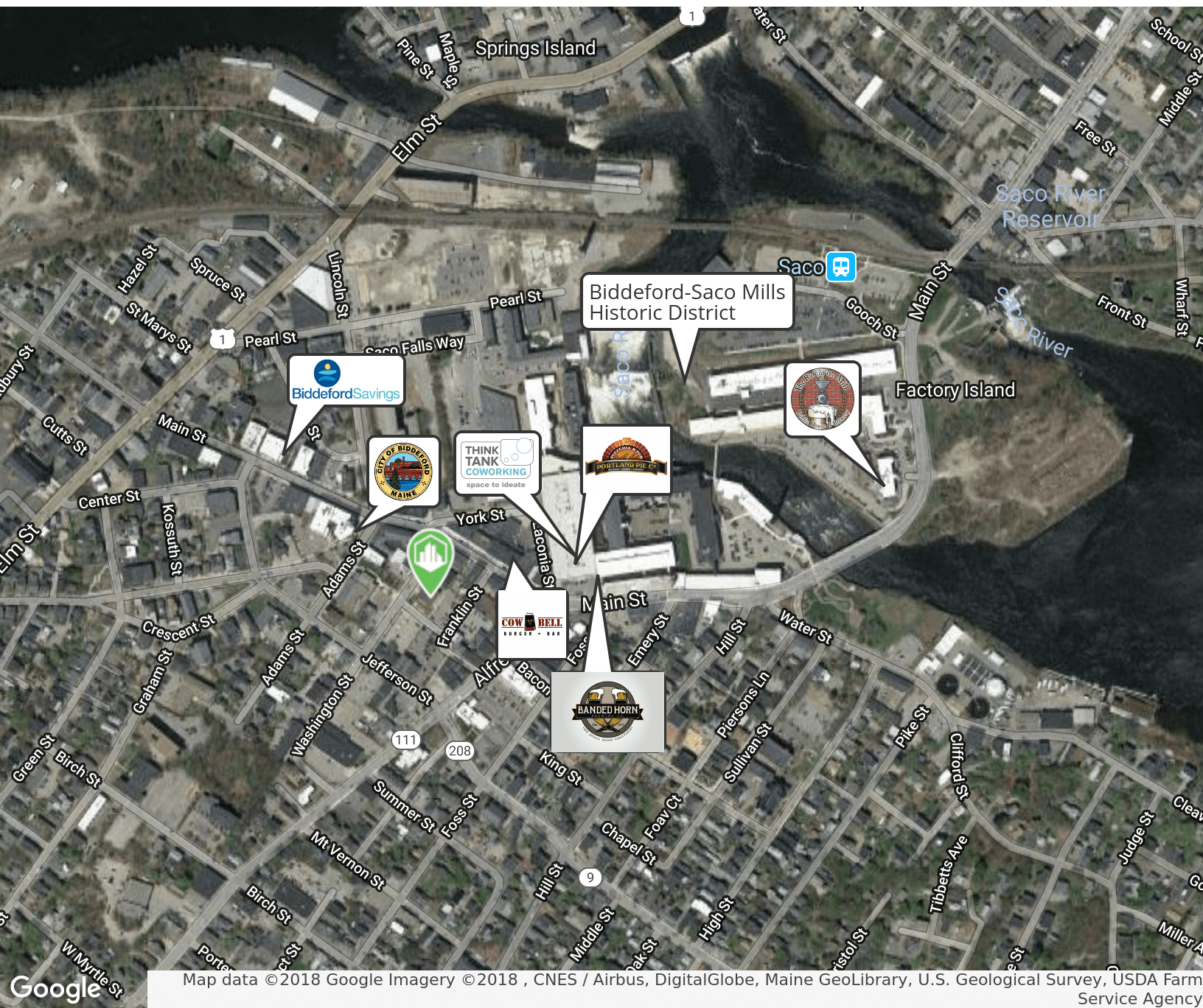


FLOOR PLANS



FOR LEASE | OFFICE/RETAIL SPACE

27 WASHINGTON STREET BIDDEFORD, ME 04005



CONTACT US



BRICE O'CONNOR

Associate
+1 207.553.1725 D
+1 603.674.2272 C
boconnor@boulos.com



JON RIZZO

Associate
+1 207.553.1712 D
+1 207.233.3304 C
jrizzo@boulos.com

©2018 The Boulos Company, Inc. All rights reserved. This information has been obtained from sources believed reliable, but has not been verified for accuracy or completeness. You should conduct a careful, independent investigation of the property and verify all information. Any reliance on this information is solely at your own risk. The Boulos Company and The Boulos Company logo are service marks of The Boulos Company, Inc. All other marks displayed on this document are the property of their respective owners. Photos herein are the property of their respective owners. Use of these images without the express written consent of the owner is prohibited.