

**Land** | ± 355.78 Acre Ranch For Sale

**CBRE**

# Alamo Ranch is a ±355.78 Acre Opportunity Located in California Historic Gold Country in Calaveras County with Panoramic Views.

7559 Alamo Road  
Mountain Ranch, Ca 95246

Ideal Retreat, Ranch, Farm, Hunting, Recreation, Getaway!

Off of Michel Road. Access also along Ponderosa Way





## Alamo Ranch

7559 Alamo Road, Mountain Ranch, Ca 95246

For Sale



## Property Highlights

- + 10 Minutes East of San Andreas, CA (Calaveras County Seat)
- + Several Great Homesite Locations
- + Ideal Private Retreat
- + Seasonal Stream
- + Gravel Road and Dirt Roads Throughout
- + General Agriculture (A1) Zoning (Per Future 2023 Zoning Update)
- + Zoning Permits One (1) House on Each Parcel
- + Generator, Well and Water Tank
- + Cell Service
- + Newer Metal Building -  $\pm 1,920$  SF ( $\pm 60'$  W x  $\pm 32'$  D)
- + Two (2) Grade Level Doors ( $\pm 17$  W x  $\pm 8'$  H)
- + Includes Highest Point in Surrounding Area

## Contact Us

### Greg Smyth

First Vice President  
C +1 510 541 1387  
greg.smyth@cbre.com  
Lic. 01131484

### CBRE, Inc.

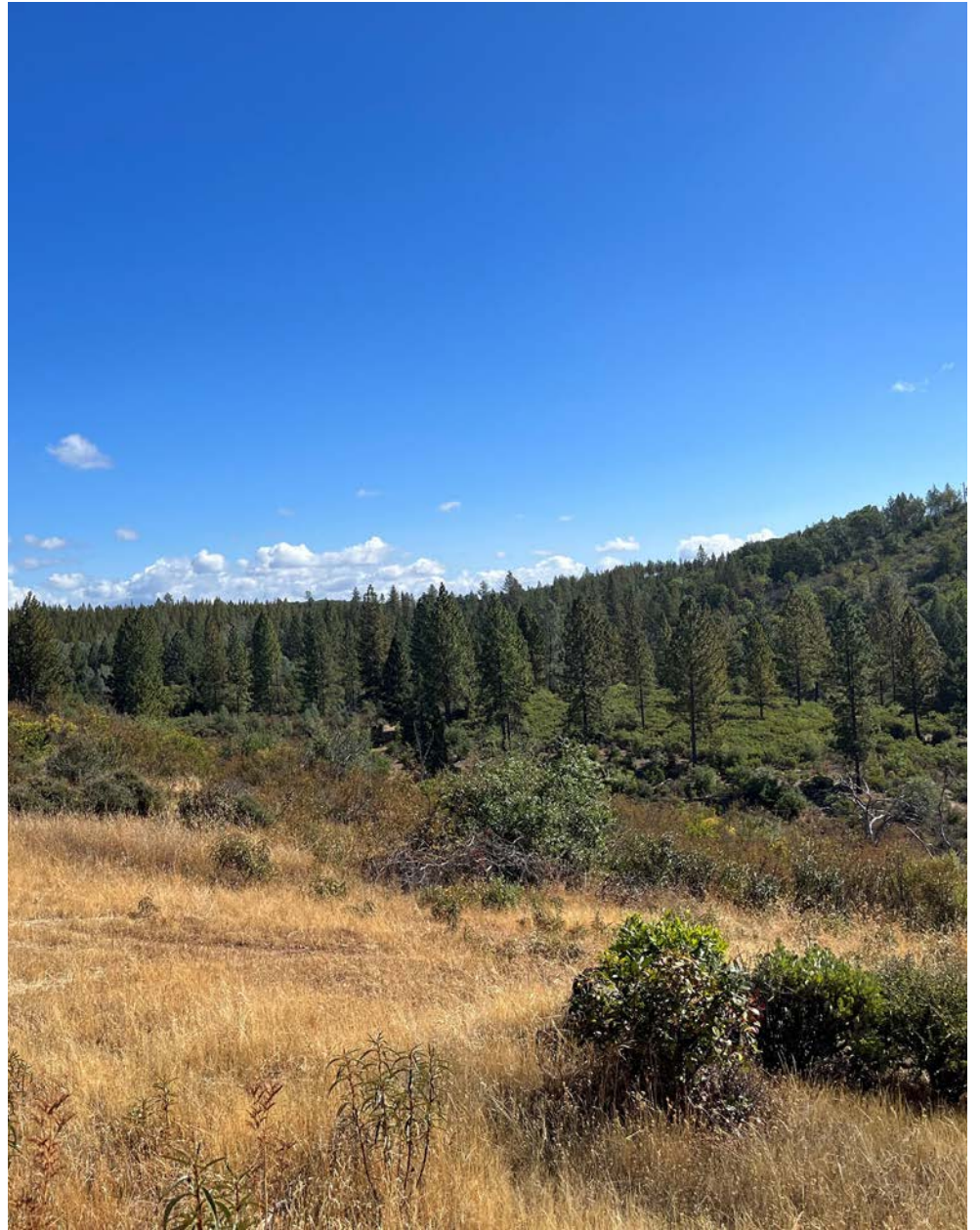
2175 N California Blvd, Suite 300  
Walnut Creek, Ca 94596  
+1 925 296 7700  
Lic. 00409987



## Alamo Ranch

7559 Alamo Road, Mountain Ranch, Ca 95246

For Sale





## Alamo Ranch

7559 Alamo Road, Mountain Ranch, Ca 95246

For Sale



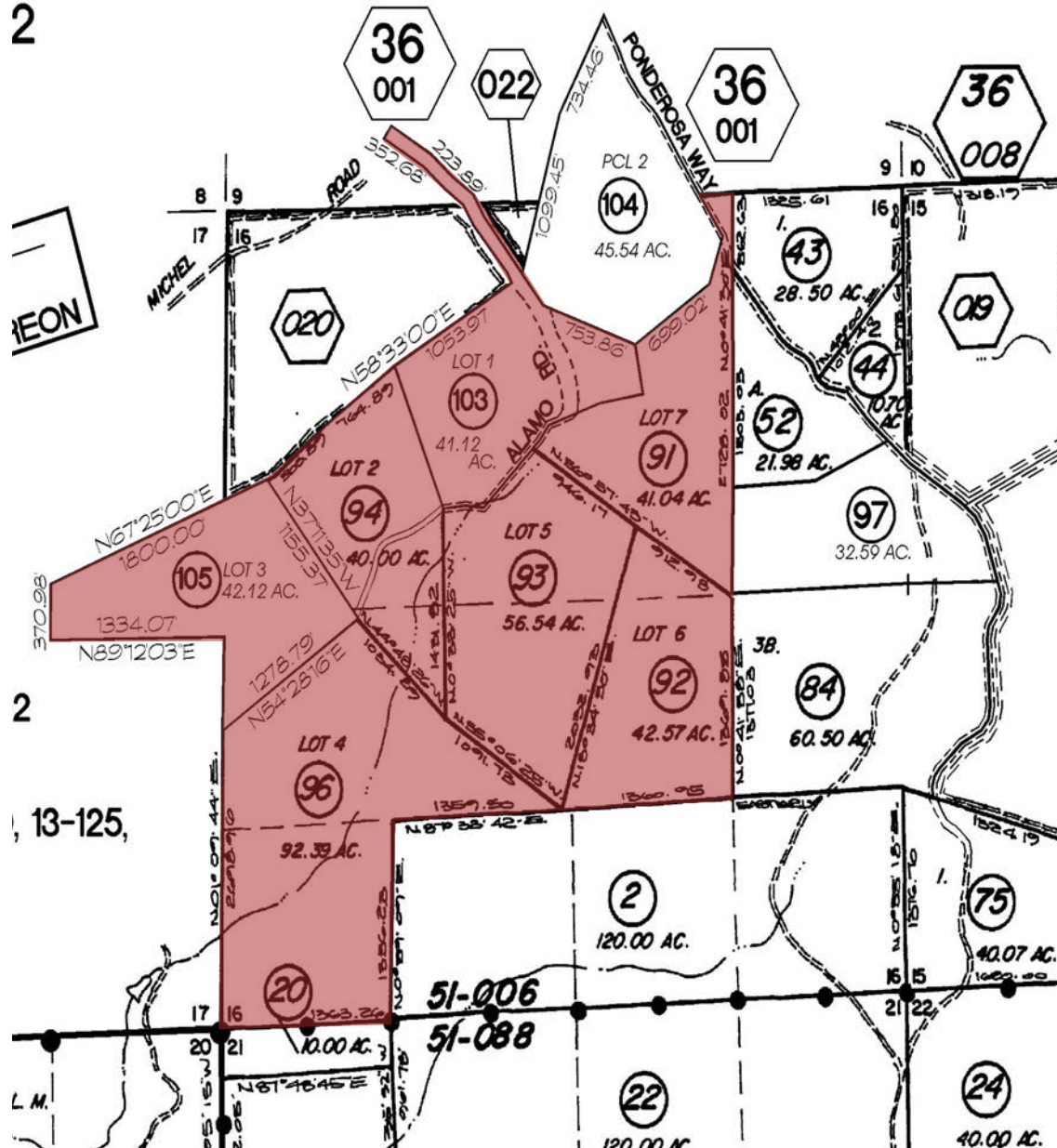


## Alamo Ranch

7559 Alamo Road, Mountain Ranch, Ca 95246

For Sale

2



## 7 Parcels | APN(s) & Acreage

1. 038-005-091 (±41.04 Ac)
2. 038-005-092 (±42.57 Ac)
3. 038-005-093 (±56.54 Ac)
4. 038-005-094 (±40.00 Ac)
5. 038-005-096 (±92.39 Ac)
6. 038-005-103 (±41.12 Ac)
7. 038-005-105 (±42.12 Ac)



## Alamo Ranch

7559 Alamo Road, Mountain Ranch, Ca 95246

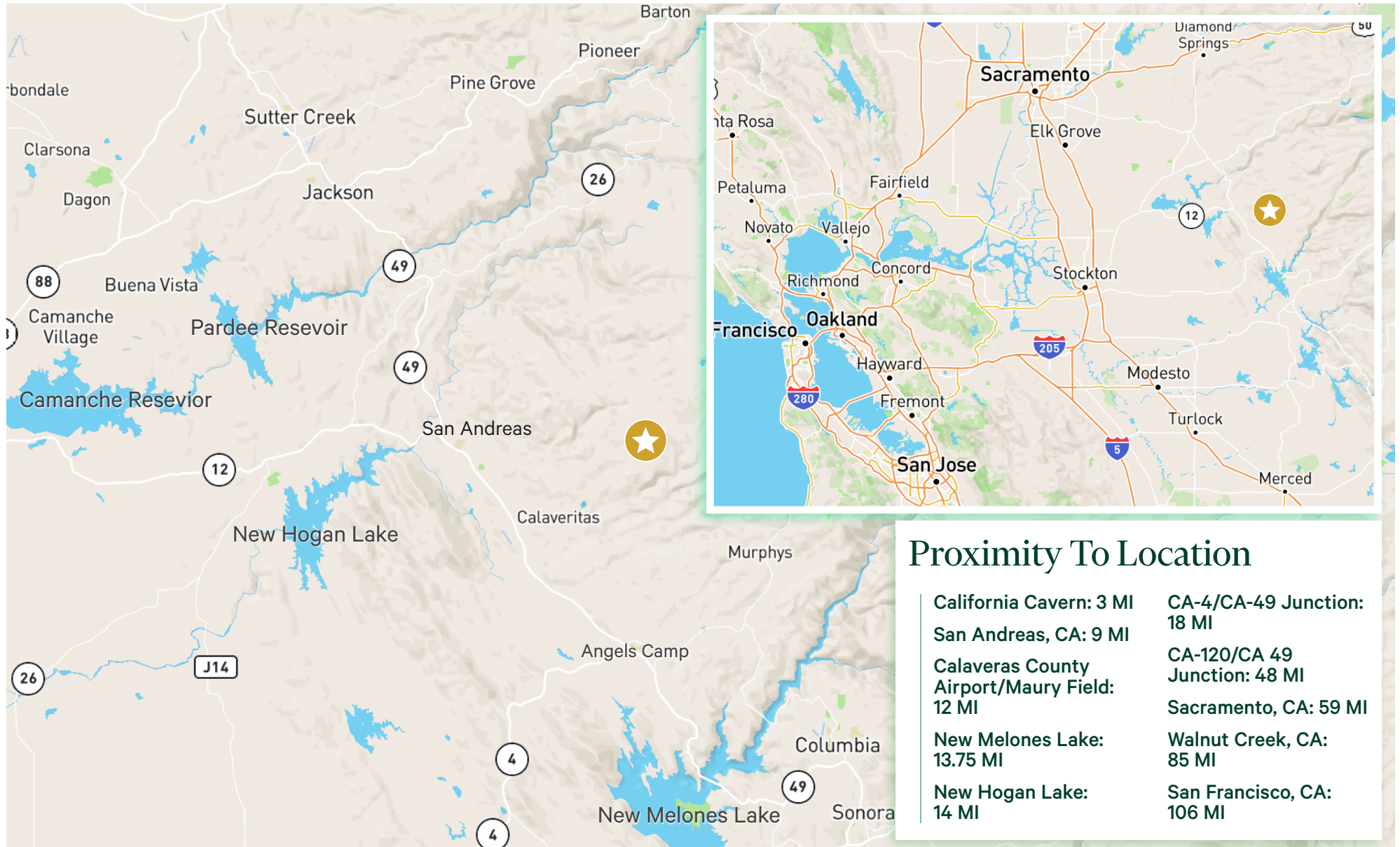
For Sale



## Alamo Ranch

7559 Alamo Road, Mountain Ranch, Ca 95246

For Sale



© 2023 CBRE, Inc. All rights reserved. This information has been obtained from sources believed reliable, but has not been verified for accuracy or completeness. You should conduct a careful, independent investigation of the property and verify all information. Any reliance on this information is solely at your own risk. CBRE and the CBRE logo are service marks of CBRE, Inc. All other marks displayed on this document are the property of their respective owners, and the use of such logos does not imply any affiliation with or endorsement of CBRE. Photos herein are the property of their respective owners. Use of these images without the express written consent of the owner is prohibited.