

POLLOCK

Office/Medical



**5635 Peachtree Parkway, STE 250
Norcross, GA 30092**

**1,984 SF
For Lease**

Renée Rosenheck
renee@pollockcommercial.com
O| (678) 524.5487

CORFAC
INTERNATIONAL



PROPERTY DESCRIPTION

5635 Peachtree Parkway is a Medical and Office building with excellent visibility along Peachtree Parkway in Peachtree Corners.

Suite 250 can be used for medical, therapy or office space and will be available in January 2026. \$25.00/SF Full Service.

PROPERTY HIGHLIGHTS

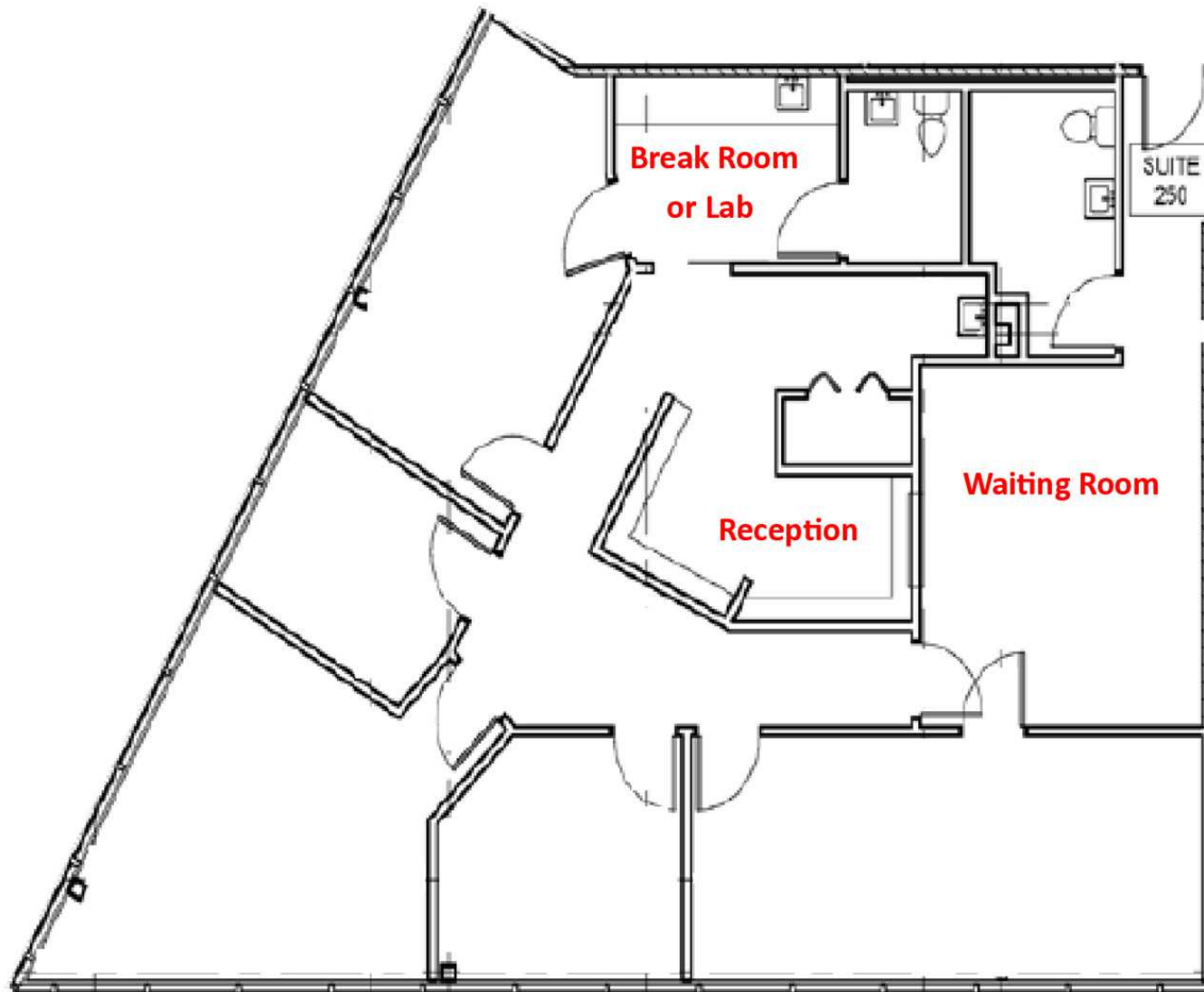
- Prime Peachtree Corners location with easy access to The Forum and surrounding residential communities
- Full-service lease offerings with flexible layouts suited for medical or professional office use
- Well-maintained building with ample parking, professional property management, and strong visibility along Peachtree Parkway

OFFERING SUMMARY

Lease Rate:	\$25.00 SF/yr (Full Service)
Available SF:	1,984 SF
Lot Size:	2.49 Acres
Building Size:	25,694 SF

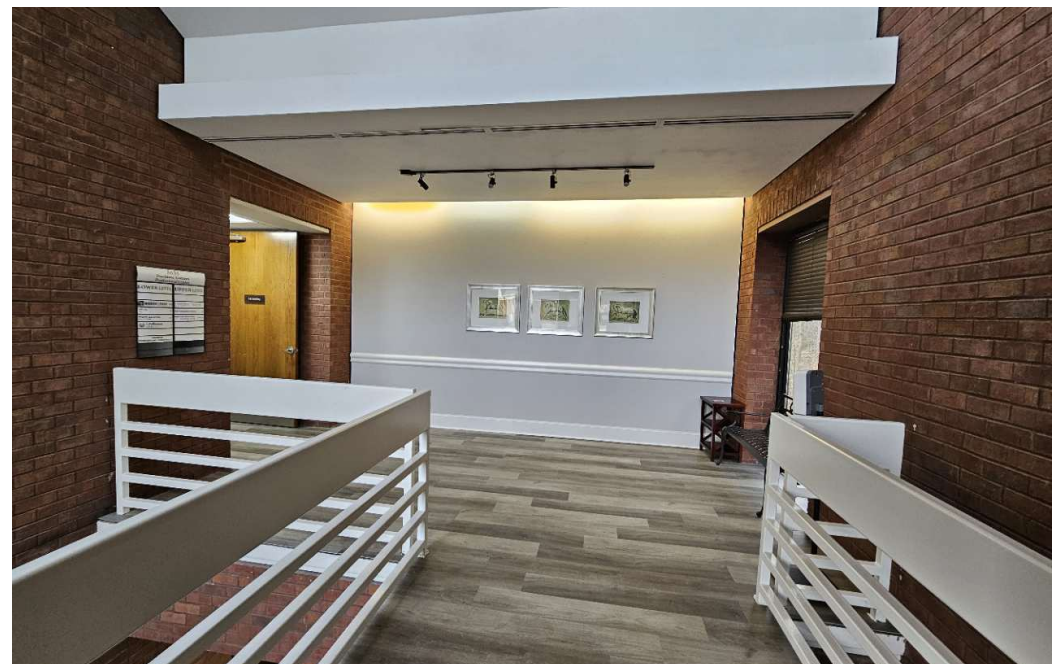
DEMOGRAPHICS	0.3 MILES	0.5 MILES	1 MILE
Total Households	14	194	2,335
Total Population	31	446	5,379
Average HH Income	\$109,826	\$134,777	\$142,545

SUITE 250 - 1,984 SF



POLLOCK

Suite 250





Let's get this leased.

Renée Rosenheck
renee@pollockcommercial.com
O| (678) 524.5487

POLLOCK

CORFAC
INTERNATIONAL

No warranty or representation, express or implied, is made as to the information contained herein, and the same is submitted subject to errors, omissions, change of price, rental, or other conditions, withdrawal without notice, and to any special listing conditions, imposed by our principals.