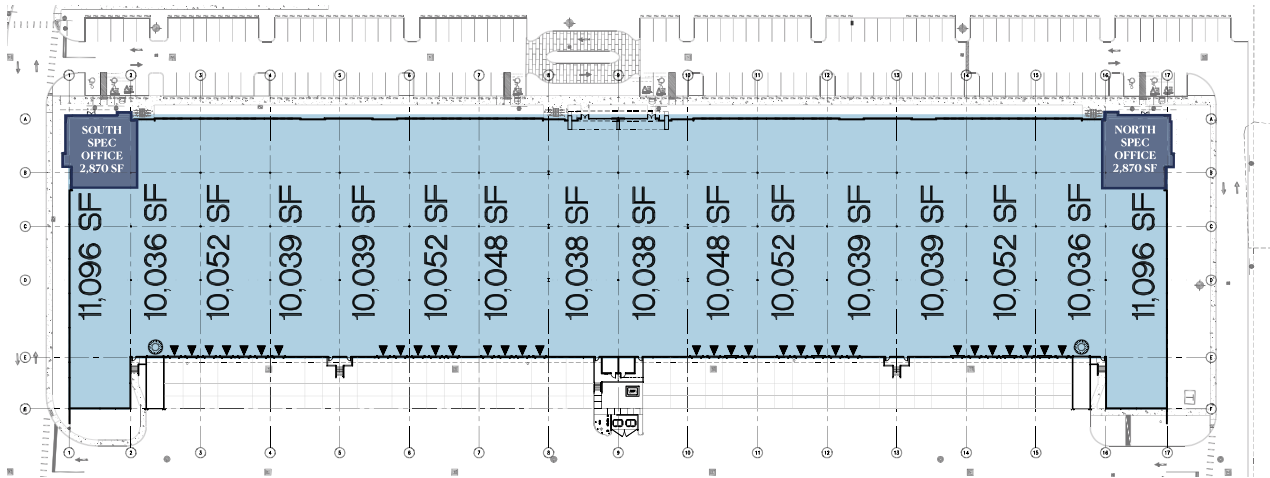
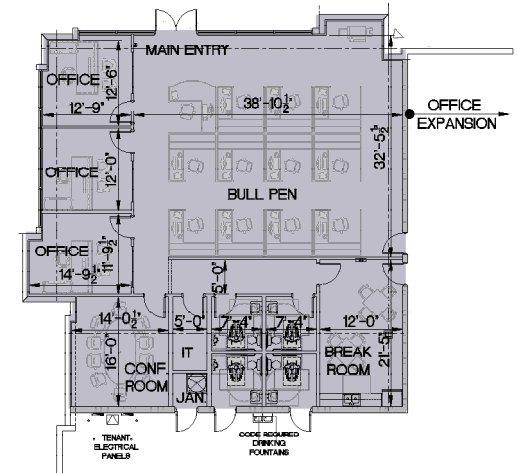


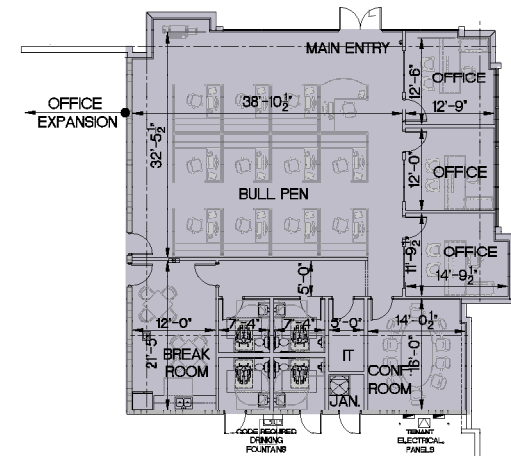
BUILDING B » 162,800 SF 4763 WEST ATLANTIC BOULEVARD



SOUTH SPEC OFFICE » 2,870 SF



NORTH SPEC OFFICE » 2,870 SF



BUILDING SPECIFICATIONS

» BUILDING SF:	162,800	» DRIVE-IN DOORS-RAMP:	2
» CLEAR HEIGHT:	32'	» CONSTRUCTION:	Type 11-8
» BUILDING DIMENSIONS:	852' X 185'	» ROOF SYSTEM:	R19
» LOADING:	Rear-Loading	» FIRE & LIFE SAFETY:	ESFR
» TRUCK COURT DEPTH:	178'	» SPEC OFFICE:	2,870 SF (S) 2,870 SF (N)
» PARKING:	136	» COLUMN SPACING:	54'
» PARKING RATIO:	1.02	» SLAB THICKNESS:	6"
» DOCK DOORS:	34	» DELIVERY:	3Q 2026