

# 18200 Ten Mile Road

*Eastpointe, MI*

- Professional Office Building
- 1,639 Square Feet For Lease
- 4 Exam Room Medical Suite
- Available for Medical or Dental
- Close Proximity to I-94
- Building Signage

## OFFICE BUILDING FOR LEASE

### FOR MORE INFORMATION:

Al Iafrate, SIOR  
Senior Vice President  
248.637.7791  
aiafrate@LMCap.com

248.637.9700 | LMCap.com

Information contained herein was obtained from sources deemed to be reliable but is not guaranteed. Subjects to prior sales, changes of price or withdrawal.



**L. MASON CAPITANI**

CORFAC INTERNATIONAL

CELEBRATING 60 YEARS



# 18200 Ten Mile Road

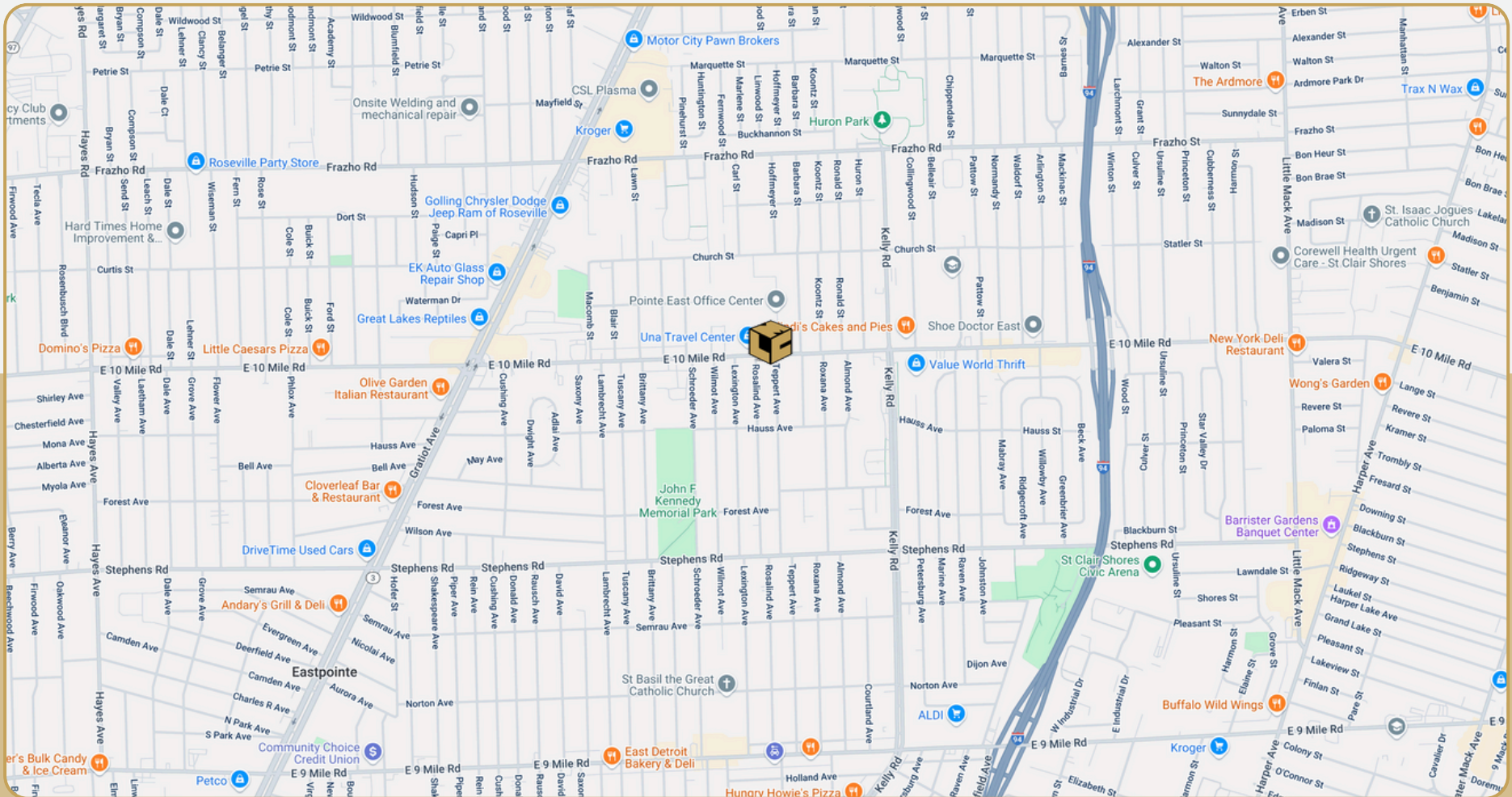
Eastpointe, MI



**L. MASON CAPITANI**

CORFAC INTERNATIONAL

CELEBRATING 60 YEARS



248.637.9700 | LMCap.com

Information contained herein was obtained from sources deemed to be reliable but is not guaranteed. Subjects to prior sales, changes of price or withdrawal.

# 18200 Ten Mile Road

Eastpointe, MI



**L. MASON CAPITANI**

CORFAC INTERNATIONAL

CELEBRATING 60 YEARS

## Office Property Details:

### Details:

**Location Description:** 10 Mile Rd & Kelly Rd

**Building Type:** Office/Medical

**Class:** C

**Zoning:** O-1

**Floors:** 1

**Year Built:** 1988

**Year Renovated:** -

**Gross SF:** 4,125 SF

**Total Rentable SF:** 4,125 SF

**Available SF:** 1,639 SF

**Acres:** 0.33

**Multitenant:** Yes

**Parcel ID:** 02-14-29-204-001

**Property Description:** Medical professional building. 4-exam room medical suite available. Excellent proximity to I-94 & Pointe Professional Centre.

### Economic:

**Min/Max Rental Rate:** \$21.50/SF

**Rental Terms:** + Utilities

**Annual Escalations:** \$0.50/SF

**Load Factor:** -

**Occupancy:** Immediate

**Parking:** 30 Spaces

**Partition Allowance:** Negotiable

**Signage:** Building

**Status:** Existing

248.637.9700 | LMCap.com

Information contained herein was obtained from sources deemed to be reliable but is not guaranteed. Subjects to prior sales, changes of price or withdrawal.

# 18200 Ten Mile Road

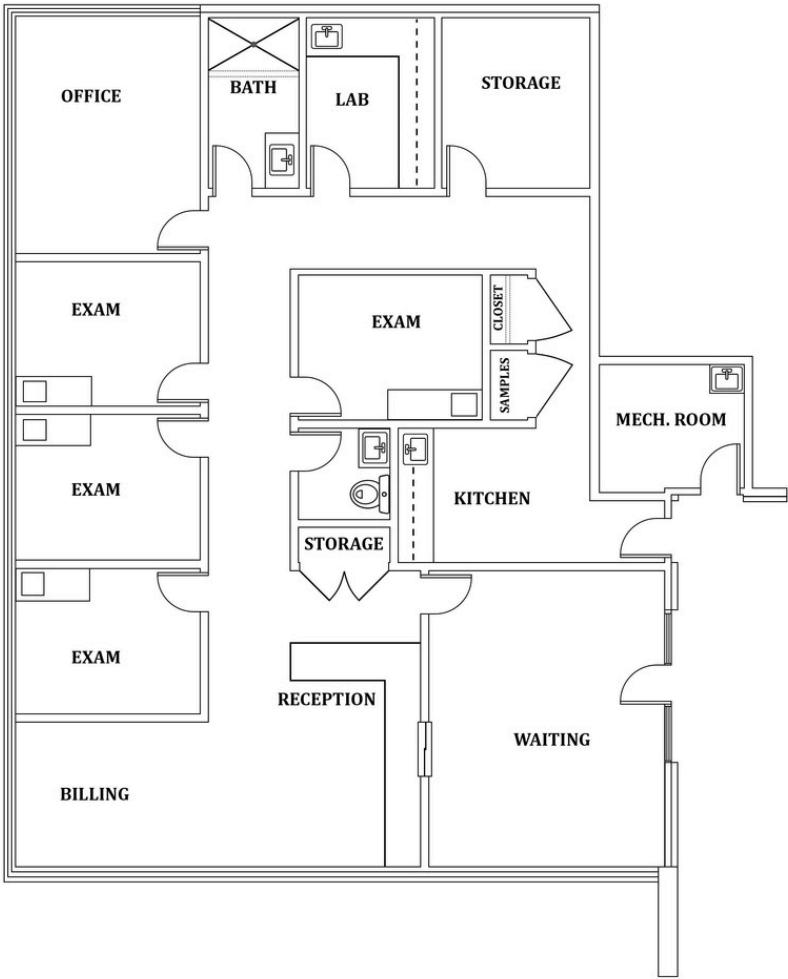
Eastpointe, MI



L. MASON CAPITANI

CORFAC INTERNATIONAL

CELEBRATING 60 YEARS



Suite Number	Square Footage
100	1,639

248.637.9700 | LMCap.com

Information contained herein was obtained from sources deemed to be reliable but is not guaranteed. Subjects to prior sales, changes of price or withdrawal.