

FOR SALE

5841 SW 29TH ST

Topeka, KS 66614

KANSAS COMMERCIAL
REAL ESTATE SERVICES, INC.



PROPERTY DESCRIPTION

Office suite well-located in southwest Topeka near the Wanamaker corridor. Surface parking and easy access to I-470. Excellent for an owner-user, investor, or anyone wanting space with visibility and convenience. Interior remodeled in 2024.

OFFERING SUMMARY

Sale Price	\$85,000
Building Size	1,150 ^{+/-} SF
Available Space	1,150 ^{+/-} SF
Lot Size	128,601 ^{+/-} SF
Year Built	1984
Interior Remodel	2024
Zoning	PUD, M2

Monthly association fees (includes water) are \$325.00.

VIRTUAL WALK-THRU LINK:

<https://my.matterport.com/show/?m=h6CM6bLGQVh>



Listed By:

MIKE MORSE

Partner, SIOR

785.228.5304

mike@kscommercial.com

All information furnished regarding property for sale or lease is from sources deemed reliable; but no warranty or representation is made as to the accuracy thereof and the same is submitted subject to errors, omissions, changes of price, rental or other conditions prior sale or lease, or withdrawal without notice. The purchaser and or leaser should conduct a careful, independent investigation of the property to determine if the property is suitable for your intended use.

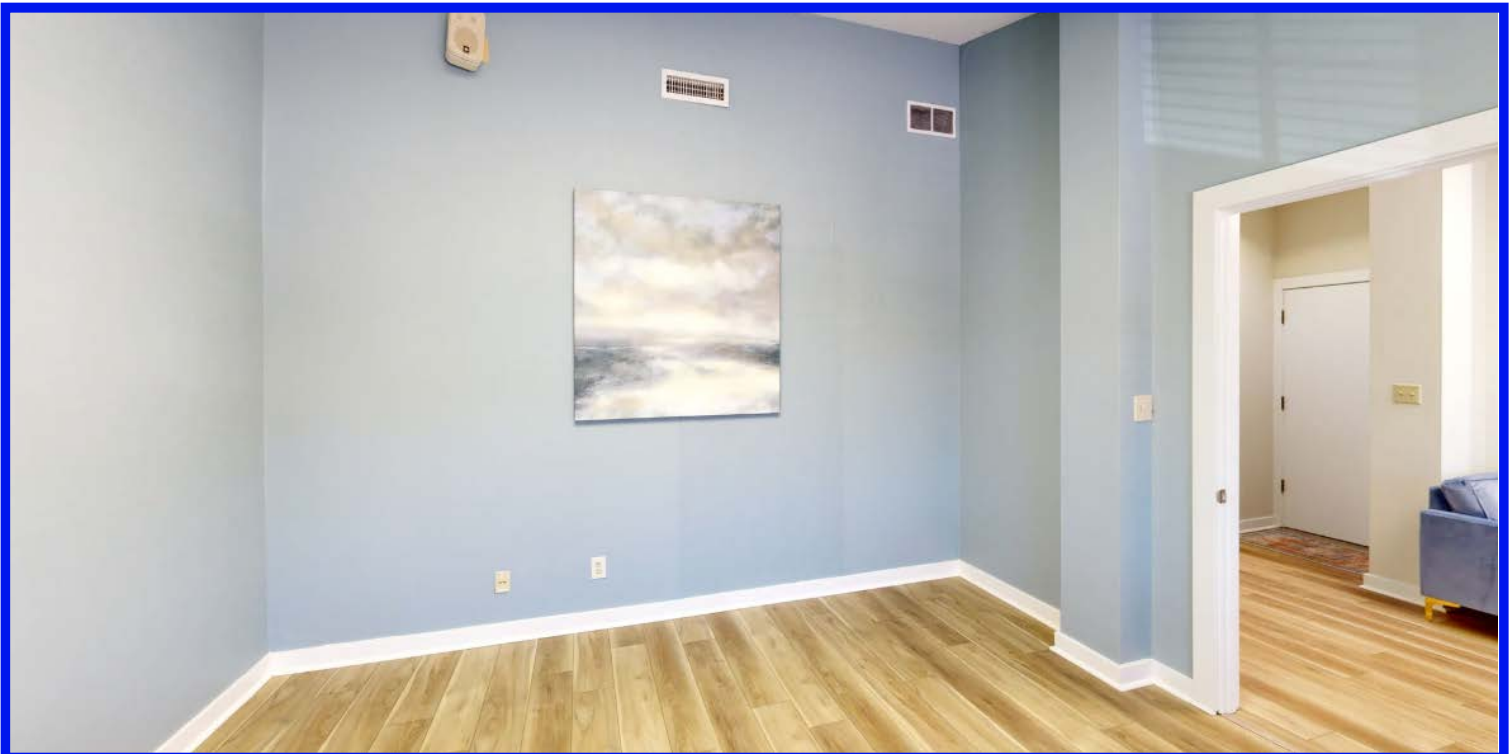
KS Commercial Real Estate Services, Inc. // 435 S Kansas Ave., Suite 200, Topeka, KS 66603 // 785.272.2525 // kscommercial.com

FOR SALE

5841 SW 29TH ST

Topeka, KS 66614

KANSAS COMMERCIAL
REAL ESTATE SERVICES, INC.



Listed By:

MIKE MORSE

Partner, SIOR

785.228.5304

mike@kscommercial.com

All information furnished regarding property for sale or lease is from sources deemed reliable; but no warranty or representation is made as to the accuracy thereof and the same is submitted subject to errors, omissions, changes of price, rental or other conditions prior sale or lease, or withdrawal without notice. The purchaser and or leaser should conduct a careful, independent investigation of the property to determine if the property is suitable for your intended use.

KS Commercial Real Estate Services, Inc. // 435 S Kansas Ave., Suite 200, Topeka, KS 66603 // 785.272.2525 // kscommercial.com