



## SECOND+STATE

FOR LEASING INFORMATION,  
PLEASE CONTACT:

### NADIA LETEY

t +1 801 869 8055  
m +1 801 201 8237  
e [nadia.letey@cbre.com](mailto:nadia.letey@cbre.com)

### SCOTT WILMARTH

t +1 801 869 8025  
m +1 801 580 1797  
e [scott.willmarth@cbre.com](mailto:scott.willmarth@cbre.com)

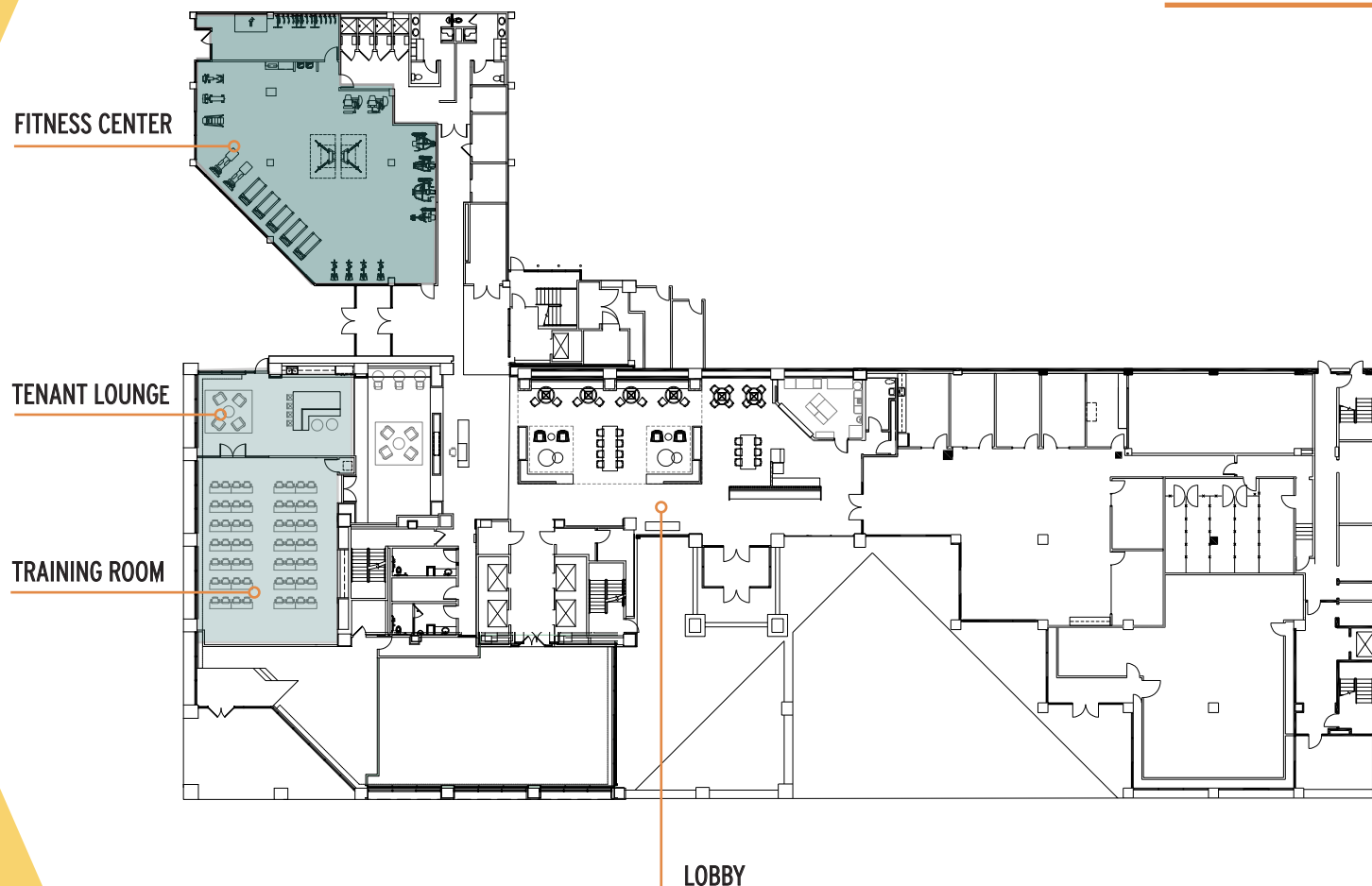
### ROMAN BERNARDO

t +1 801 930 6118  
m +1 801 879 2043  
e [roman.bernardo@cbre.com](mailto:roman.bernardo@cbre.com)

**KBS** **CBRE**

# FLOOR ONE

## AMENITY RICH



© 2025 CBRE, Inc. All rights reserved. This information has been obtained from sources believed reliable, but has not been verified for accuracy or completeness. You should conduct a careful, independent investigation of the property and verify all information. Any reliance on this information is solely at your own risk. CBRE and the CBRE logo are service marks of CBRE, Inc. All other marks displayed on this document are the property of their respective owners, and the use of such logos does not imply any affiliation with or endorsement of CBRE. Photos herein are the property of their respective owners. Use of these images without the express written consent of the owner is prohibited.



## SECOND+STATE

FOR LEASING INFORMATION,  
PLEASE CONTACT:

### NADIA LETEY

t +1 801 869 8055  
m +1 801 201 8237  
e [nadia.letey@cbre.com](mailto:nadia.letey@cbre.com)

### SCOTT WILMARTH

t +1 801 869 8025  
m +1 801 580 1797  
e [scott.willmarth@cbre.com](mailto:scott.willmarth@cbre.com)

### ROMAN BERNARDO

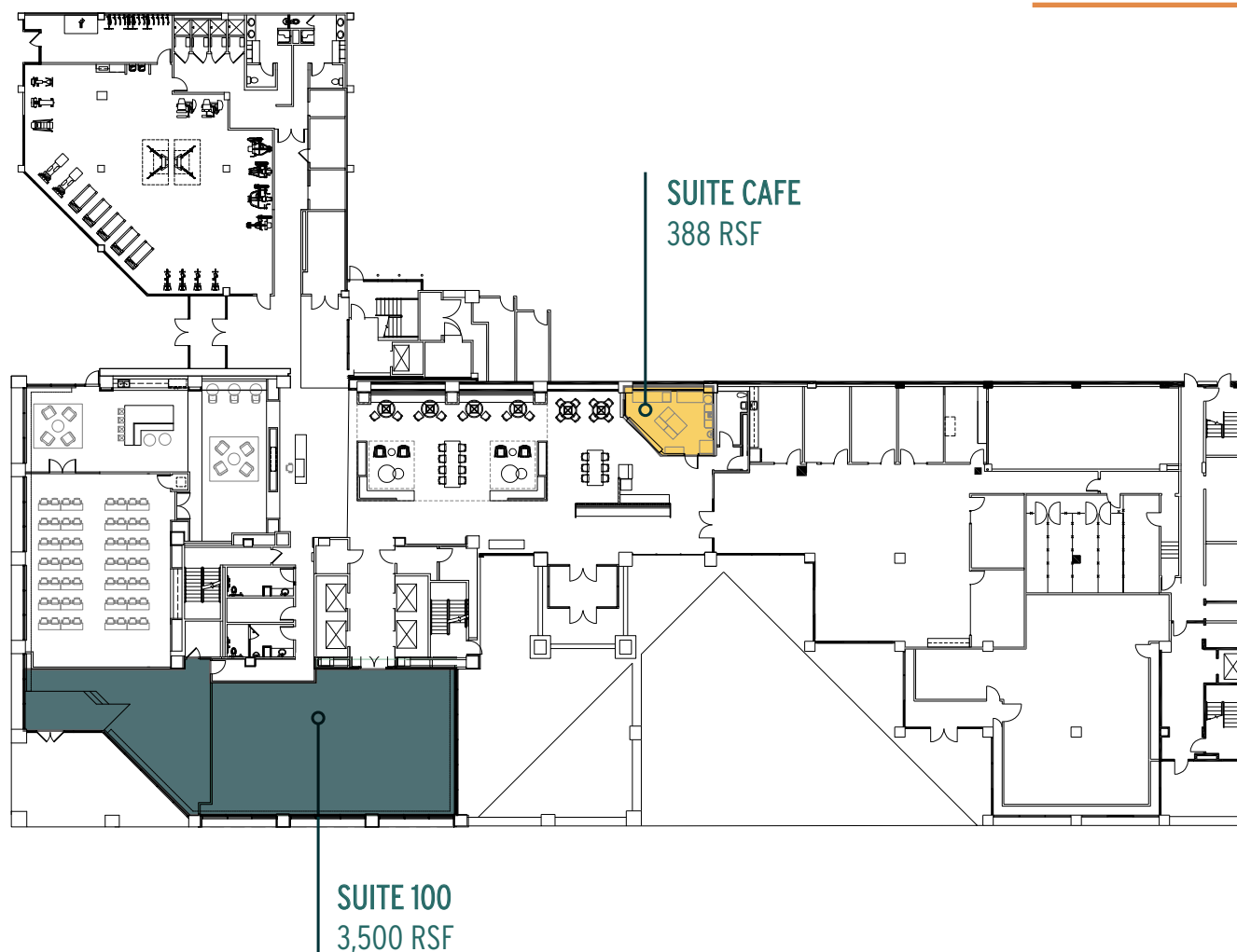
t +1 801 930 6118  
m +1 801 879 2043  
e [roman.bernardo@cbre.com](mailto:roman.bernardo@cbre.com)

**KBS** **CBRE**

# FLOOR ONE

388 SF

3,500 SF



© 2025 CBRE, Inc. All rights reserved. This information has been obtained from sources believed reliable, but has not been verified for accuracy or completeness. You should conduct a careful, independent investigation of the property and verify all information. Any reliance on this information is solely at your own risk. CBRE and the CBRE logo are service marks of CBRE, Inc. All other marks displayed on this document are the property of their respective owners, and the use of such logos does not imply any affiliation with or endorsement of CBRE. Photos herein are the property of their respective owners. Use of these images without the express written consent of the owner is prohibited.



SECOND+STATE

FOR LEASING INFORMATION,  
PLEASE CONTACT:

**NADIA LETEY**

t +1 801 869 8055  
m +1 801 201 8237  
e [nadia.letey@cbre.com](mailto:nadia.letey@cbre.com)

**SCOTT WILMARTH**

t +1 801 869 8025  
m +1 801 580 1797  
e [scott.wilmarth@cbre.com](mailto:scott.wilmarth@cbre.com)

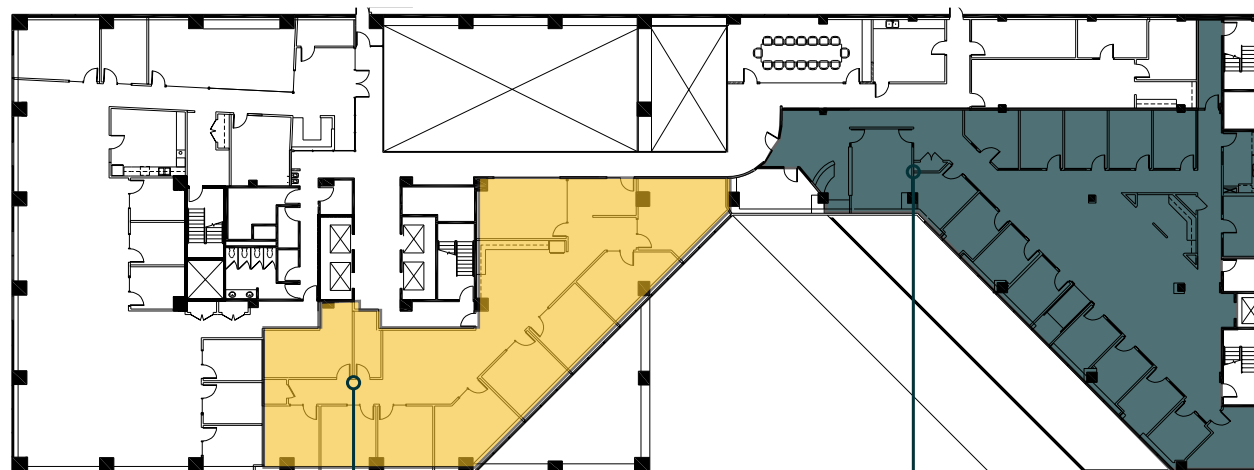
**ROMAN BERNARDO**

t +1 801 930 6118  
m +1 801 879 2043  
e [roman.bernardo@cbre.com](mailto:roman.bernardo@cbre.com)

**KBS CBRE**

# FLOOR THREE

UP TO 10,806 SF



SUITE 350  
4,428 RSF

SUITE 380  
6,378 RSF  
AVAILABLE JUNE 1, 2026

© 2025 CBRE, Inc. All rights reserved. This information has been obtained from sources believed reliable, but has not been verified for accuracy or completeness. You should conduct a careful, independent investigation of the property and verify all information. Any reliance on this information is solely at your own risk. CBRE and the CBRE logo are service marks of CBRE, Inc. All other marks displayed on this document are the property of their respective owners, and the use of such logos does not imply any affiliation with or endorsement of CBRE. Photos herein are the property of their respective owners. Use of these images without the express written consent of the owner is prohibited.



**SECOND+STATE**

**FOR LEASING INFORMATION,  
PLEASE CONTACT:**

**NADIA LETEY**

t +1 801 869 8055  
m +1 801 201 8237  
e [nadia.letey@cbre.com](mailto:nadia.letey@cbre.com)

**SCOTT WILMARTH**

t +1 801 869 8025  
m +1 801 580 1797  
e [scott.willmarth@cbre.com](mailto:scott.willmarth@cbre.com)

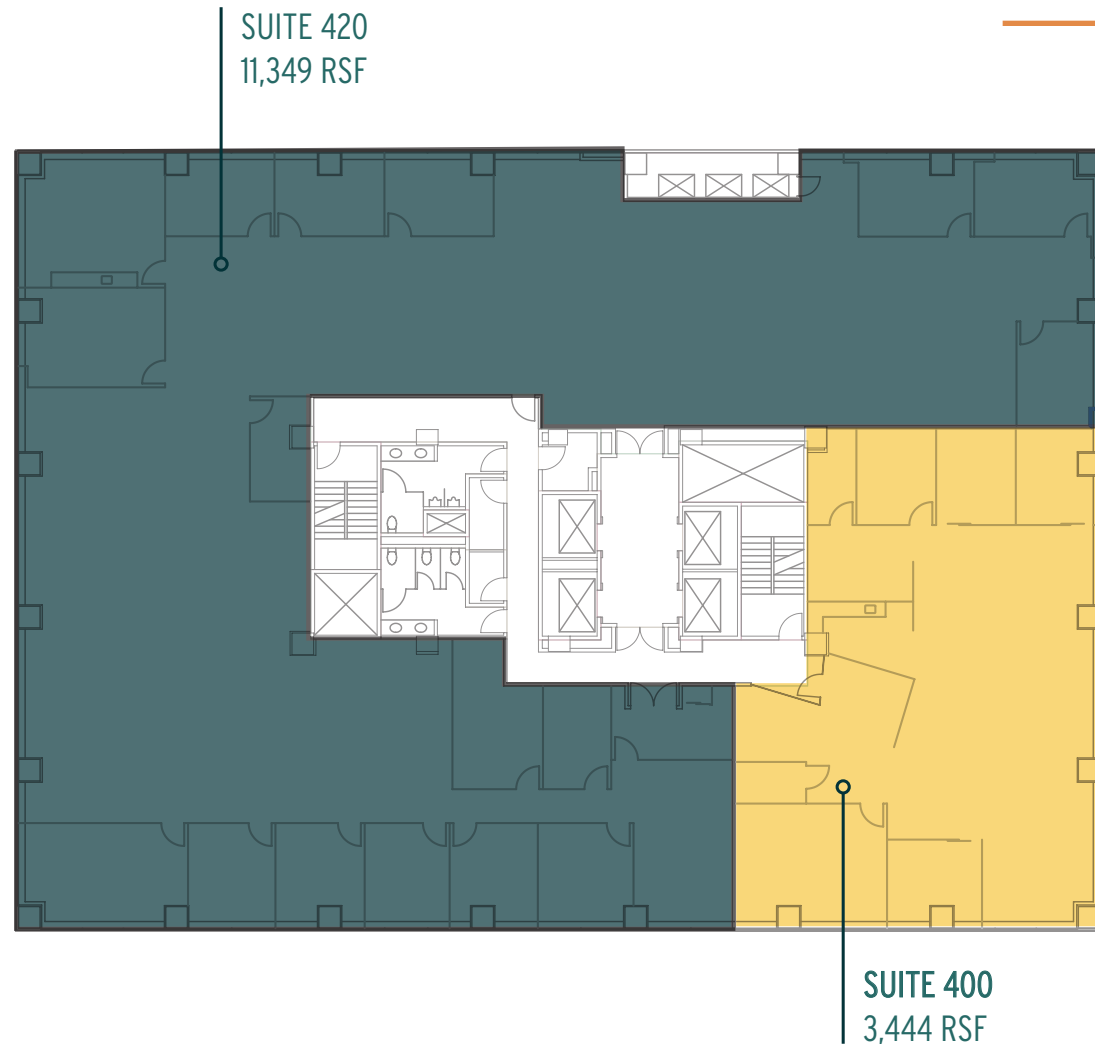
**ROMAN BERNARDO**

t +1 801 930 6118  
m +1 801 879 2043  
e [roman.bernardo@cbre.com](mailto:roman.bernardo@cbre.com)

**KBS CBRE**

# FLOOR FOUR

UP TO 14,793 SF



© 2025 CBRE, Inc. All rights reserved. This information has been obtained from sources believed reliable, but has not been verified for accuracy or completeness. You should conduct a careful, independent investigation of the property and verify all information. Any reliance on this information is solely at your own risk. CBRE and the CBRE logo are service marks of CBRE, Inc. All other marks displayed on this document are the property of their respective owners, and the use of such logos does not imply any affiliation with or endorsement of CBRE. Photos herein are the property of their respective owners. Use of these images without the express written consent of the owner is prohibited.



**SECOND+STATE**

**FOR LEASING INFORMATION,  
PLEASE CONTACT:**

**NADIA LETEY**

t +1 801 869 8055

m +1 801 201 8237

e [nadia.letey@cbre.com](mailto:nadia.letey@cbre.com)

**SCOTT WILMARTH**

t +1 801 869 8025

m +1 801 580 1797

e [scott.willmarth@cbre.com](mailto:scott.willmarth@cbre.com)

**ROMAN BERNARDO**

t +1 801 930 6118

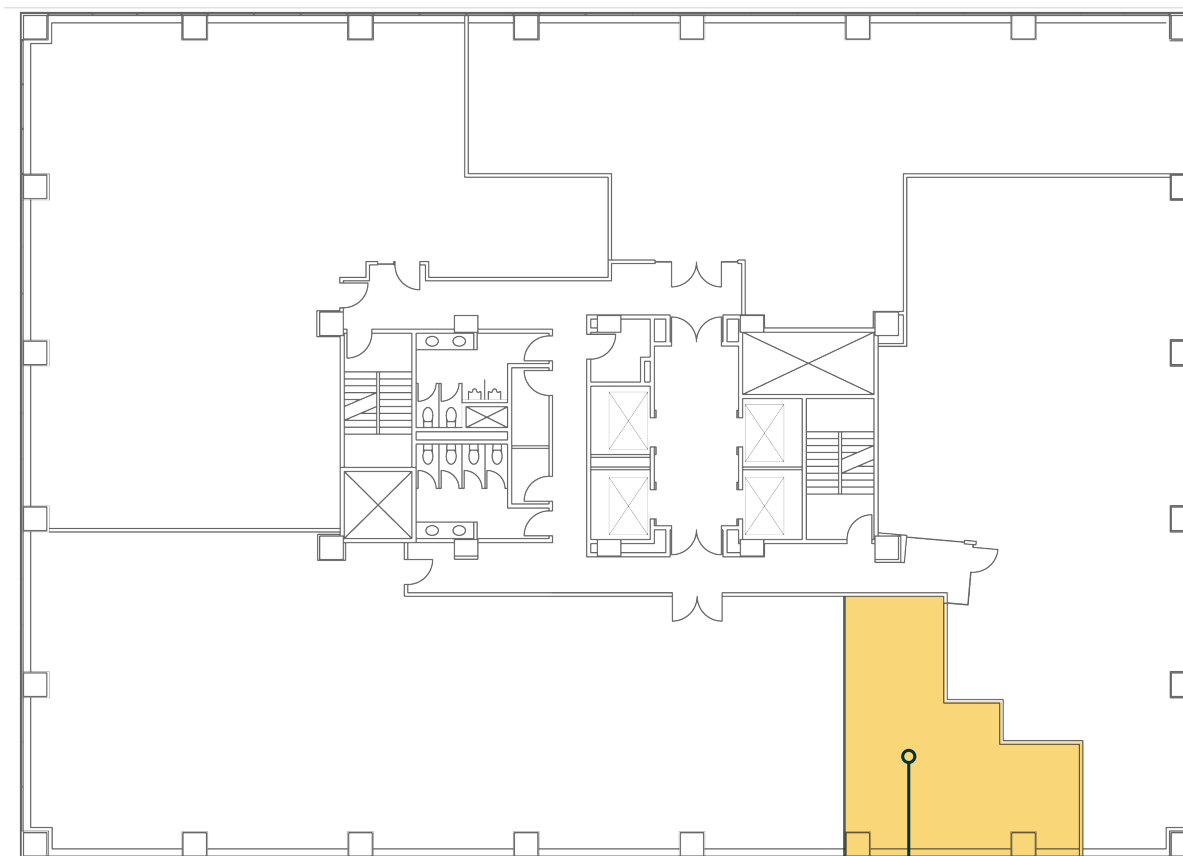
m +1 801 879 2043

e [roman.bernardo@cbre.com](mailto:roman.bernardo@cbre.com)

**KBS CBRE**

# SUITE 575

775 SF



**SUITE 575**  
775 RSF

© 2025 CBRE, Inc. All rights reserved. This information has been obtained from sources believed reliable, but has not been verified for accuracy or completeness. You should conduct a careful, independent investigation of the property and verify all information. Any reliance on this information is solely at your own risk. CBRE and the CBRE logo are service marks of CBRE, Inc. All other marks displayed on this document are the property of their respective owners, and the use of such logos does not imply any affiliation with or endorsement of CBRE. Photos herein are the property of their respective owners. Use of these images without the express written consent of the owner is prohibited.



SECOND+STATE

FOR LEASING INFORMATION,  
PLEASE CONTACT:

**NADIA LETEY**

t +1 801 869 8055  
m +1 801 201 8237  
e [nadia.letey@cbre.com](mailto:nadia.letey@cbre.com)

**SCOTT WILMARTH**

t +1 801 869 8025  
m +1 801 580 1797  
e [scott.wilmarth@cbre.com](mailto:scott.wilmarth@cbre.com)

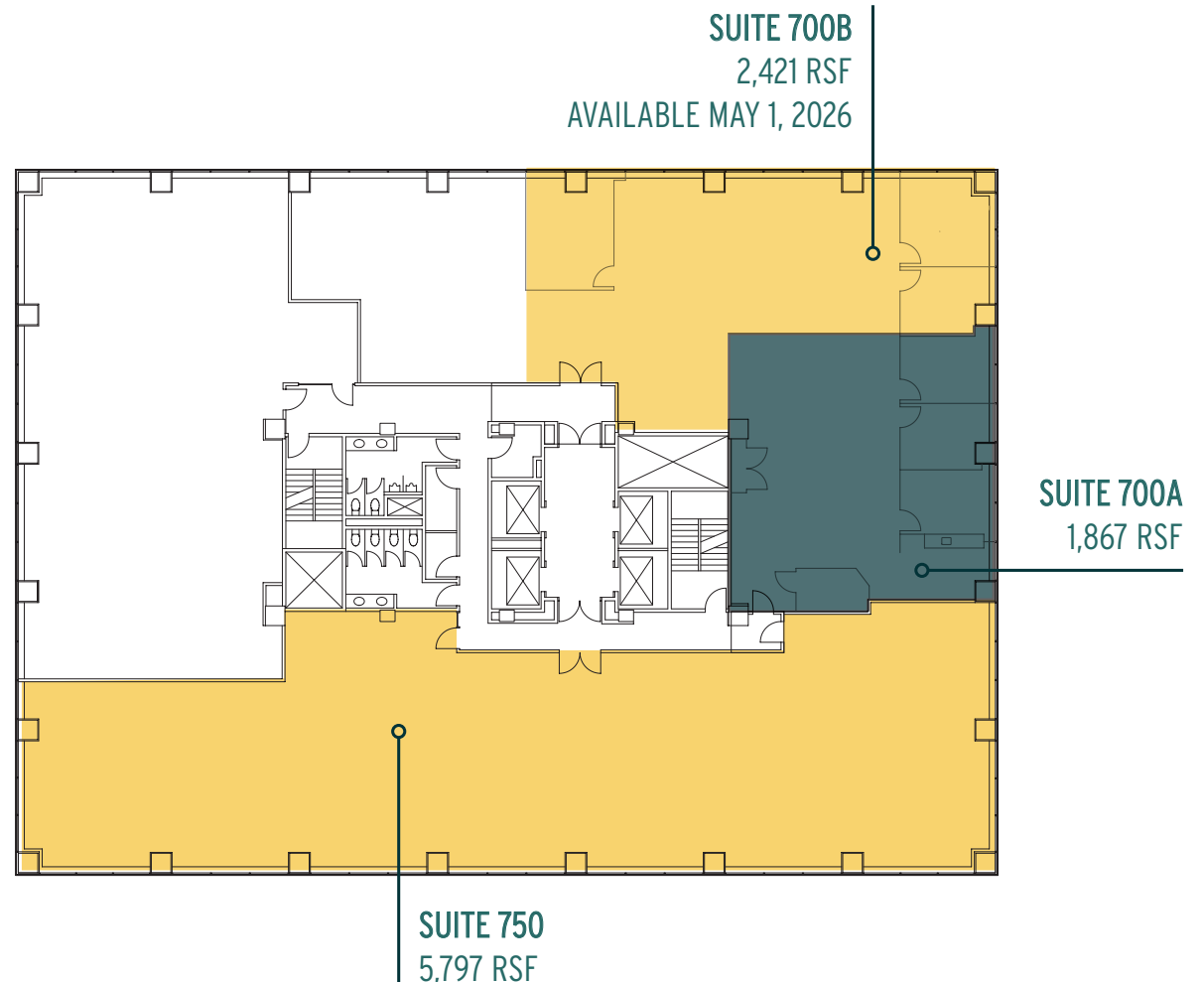
**ROMAN BERNARDO**

t +1 801 930 6118  
m +1 801 879 2043  
e [roman.bernardo@cbre.com](mailto:roman.bernardo@cbre.com)

**KBS CBRE**

# FLOOR SEVEN

UP TO 10,085 SF



© 2025 CBRE, Inc. All rights reserved. This information has been obtained from sources believed reliable, but has not been verified for accuracy or completeness. You should conduct a careful, independent investigation of the property and verify all information. Any reliance on this information is solely at your own risk. CBRE and the CBRE logo are service marks of CBRE, Inc. All other marks displayed on this document are the property of their respective owners, and the use of such logos does not imply any affiliation with or endorsement of CBRE. Photos herein are the property of their respective owners. Use of these images without the express written consent of the owner is prohibited.



## SECOND+STATE

FOR LEASING INFORMATION,  
PLEASE CONTACT:

### NADIA LETEY

t +1 801 869 8055  
m +1 801 201 8237  
e [nadia.letey@cbre.com](mailto:nadia.letey@cbre.com)

### SCOTT WILMARTH

t +1 801 869 8025  
m +1 801 580 1797  
e [scott.willmarth@cbre.com](mailto:scott.willmarth@cbre.com)

### ROMAN BERNARDO

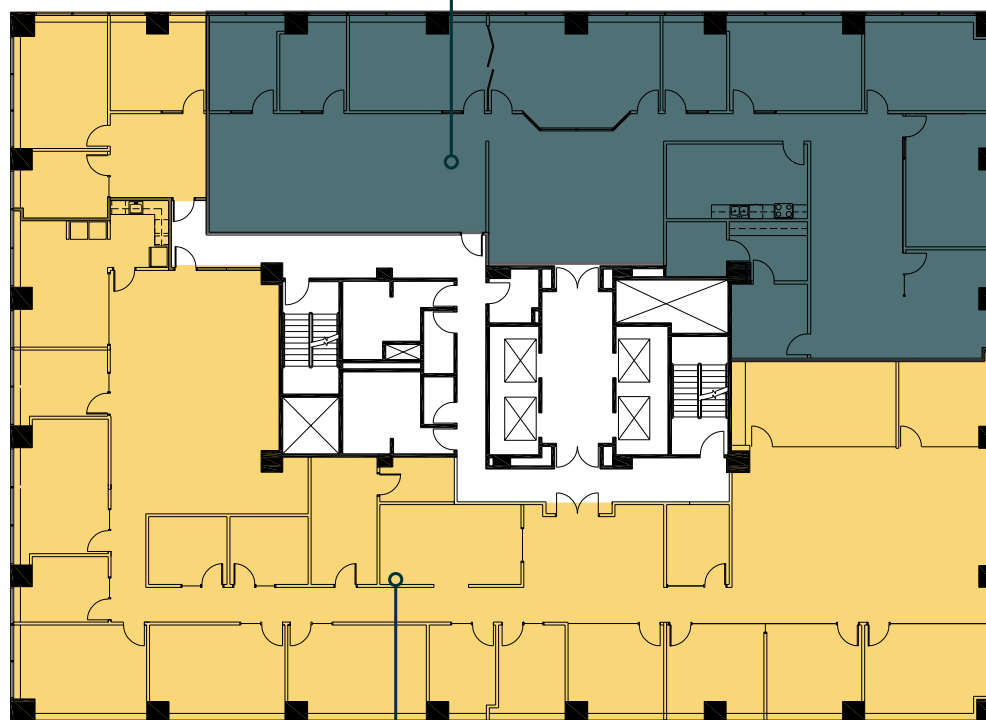
t +1 801 930 6118  
m +1 801 879 2043  
e [roman.bernardo@cbre.com](mailto:roman.bernardo@cbre.com)

**KBS** **CBRE**

# FLOOR EIGHT

14,956 SF

SUITE 800  
5,496 RSF  
AVAILABLE MAY 1, 2026



SUITE 825  
9,460 RSF

© 2025 CBRE, Inc. All rights reserved. This information has been obtained from sources believed reliable, but has not been verified for accuracy or completeness. You should conduct a careful, independent investigation of the property and verify all information. Any reliance on this information is solely at your own risk. CBRE and the CBRE logo are service marks of CBRE, Inc. All other marks displayed on this document are the property of their respective owners, and the use of such logos does not imply any affiliation with or endorsement of CBRE. Photos herein are the property of their respective owners. Use of these images without the express written consent of the owner is prohibited.



SECOND+STATE

FOR LEASING INFORMATION,  
PLEASE CONTACT:

**NADIA LETEY**

t +1 801 869 8055  
m +1 801 201 8237  
e [nadia.letey@cbre.com](mailto:nadia.letey@cbre.com)

**SCOTT WILMARTH**

t +1 801 869 8025  
m +1 801 580 1797  
e [scott.willmarth@cbre.com](mailto:scott.willmarth@cbre.com)

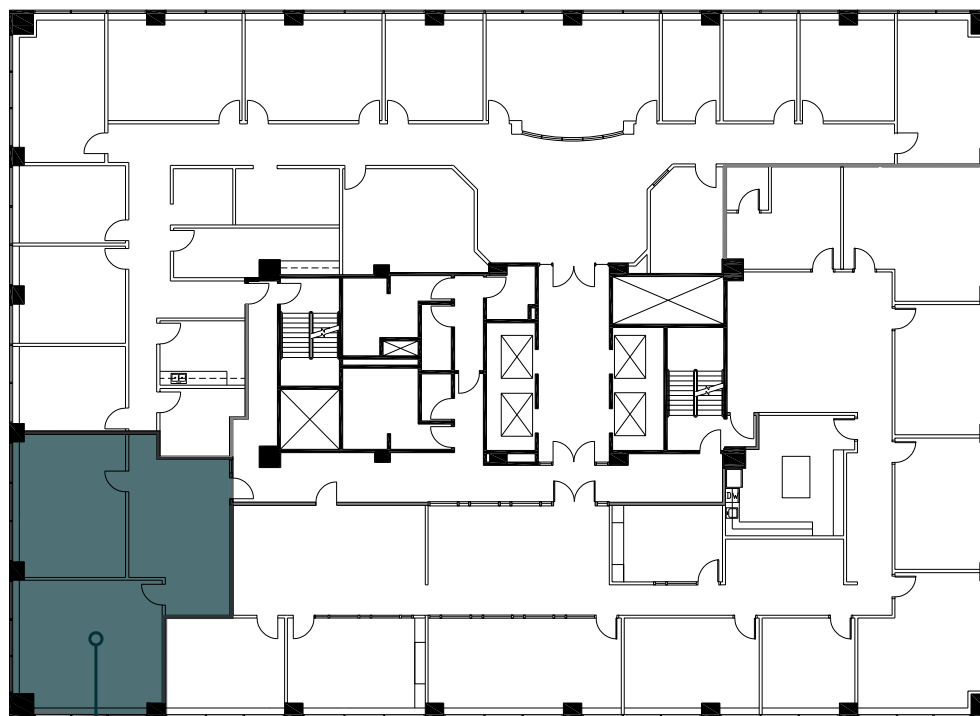
**ROMAN BERNARDO**

t +1 801 930 6118  
m +1 801 879 2043  
e [roman.bernardo@cbre.com](mailto:roman.bernardo@cbre.com)

**KBS CBRE**

# FLOOR NINE

1,407 SF



SUITE 950

1,407 RSF

AVAILABLE APRIL 1, 2026

© 2025 CBRE, Inc. All rights reserved. This information has been obtained from sources believed reliable, but has not been verified for accuracy or completeness. You should conduct a careful, independent investigation of the property and verify all information. Any reliance on this information is solely at your own risk. CBRE and the CBRE logo are service marks of CBRE, Inc. All other marks displayed on this document are the property of their respective owners, and the use of such logos does not imply any affiliation with or endorsement of CBRE. Photos herein are the property of their respective owners. Use of these images without the express written consent of the owner is prohibited.



**SECOND+STATE**

**FOR LEASING INFORMATION,  
PLEASE CONTACT:**

**NADIA LETEY**

t +1 801 869 8055

m +1 801 201 8237

e [nadia.letey@cbre.com](mailto:nadia.letey@cbre.com)

**SCOTT WILMARTH**

t +1 801 869 8025

m +1 801 580 1797

e [scott.willmarth@cbre.com](mailto:scott.willmarth@cbre.com)

**ROMAN BERNARDO**

t +1 801 930 6118

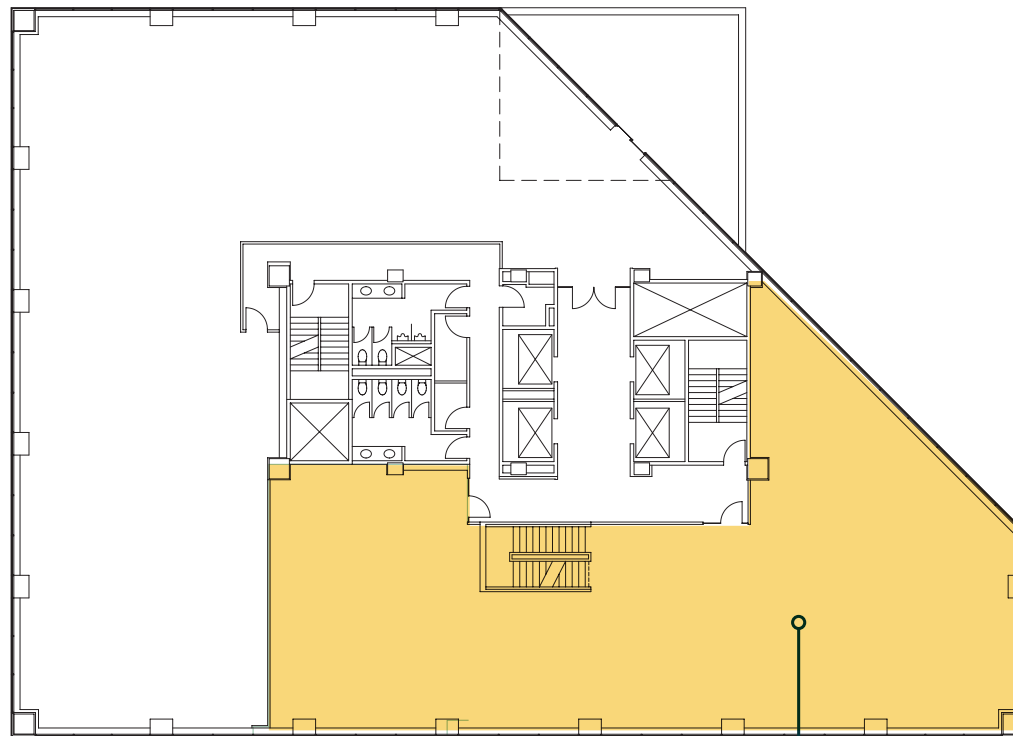
m +1 801 879 2043

e [roman.bernardo@cbre.com](mailto:roman.bernardo@cbre.com)

**KBS CBRE**

# FLOOR TWELVE

UP TO 4,930 SF



**SUITE 12-C3**  
4,930 RSF

© 2025 CBRE, Inc. All rights reserved. This information has been obtained from sources believed reliable, but has not been verified for accuracy or completeness. You should conduct a careful, independent investigation of the property and verify all information. Any reliance on this information is solely at your own risk. CBRE and the CBRE logo are service marks of CBRE, Inc. All other marks displayed on this document are the property of their respective owners, and the use of such logos does not imply any affiliation with or endorsement of CBRE. Photos herein are the property of their respective owners. Use of these images without the express written consent of the owner is prohibited.