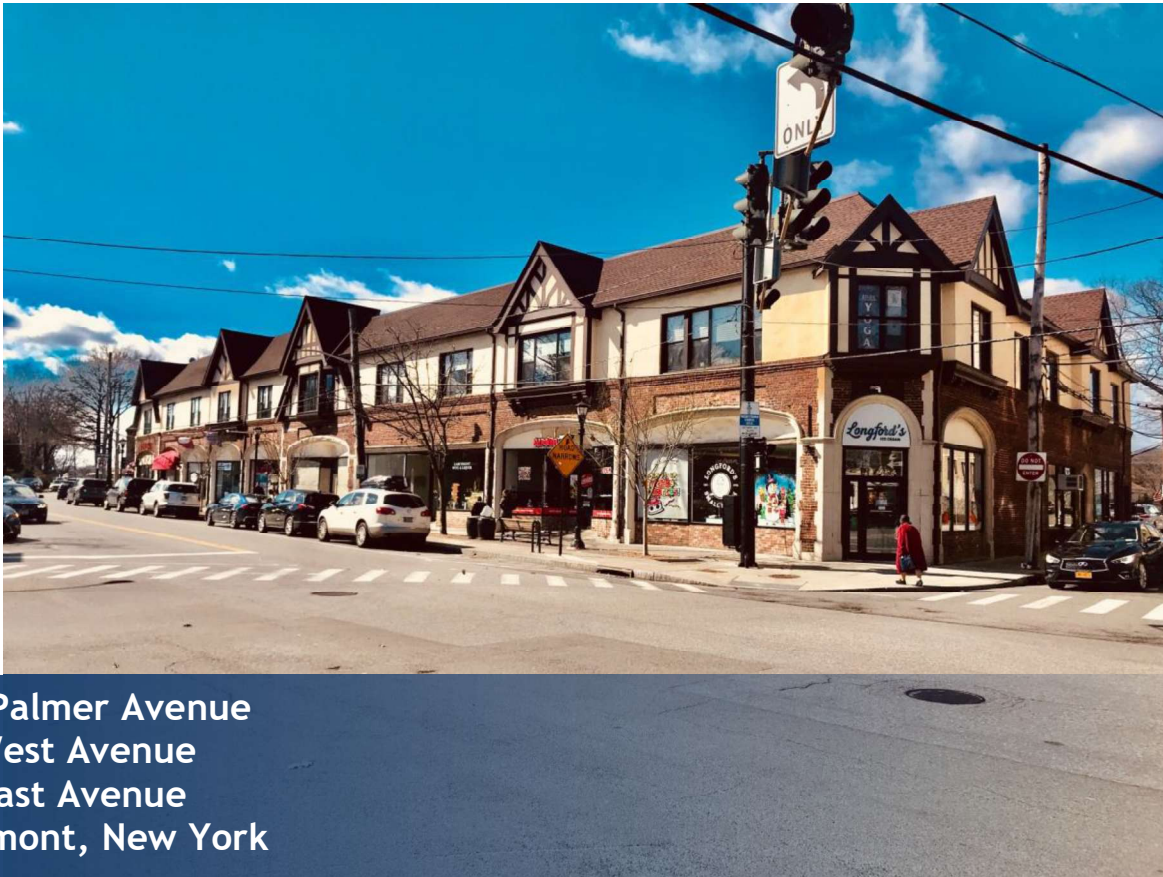


# OFFICE SPACES FOR LEASE



**GOLDSCHMIDT  
& ASSOCIATES**

Commercial Real Estate Group



1941 Palmer Avenue  
One West Avenue  
Two East Avenue  
Larchmont, New York

## Property Features

- » 592, 1,301 RSF Spaces Available
- » Elevator Building
- » Windowed
- » Separate Electric & HVAC
- » On Site and Street Parking
- » Short Walk to Metro North Train
- » 24/7 Access
- » Close to Exit 16 off I95
- » Close to Banks, Restaurants, Shopping
- » Immediate Occupancy

**Asking Rent: \$32- \$35 per SF**

## CONTACT

Exclusive Agent:

**Eric S. Goldschmidt**

Phone: 914-723-1616

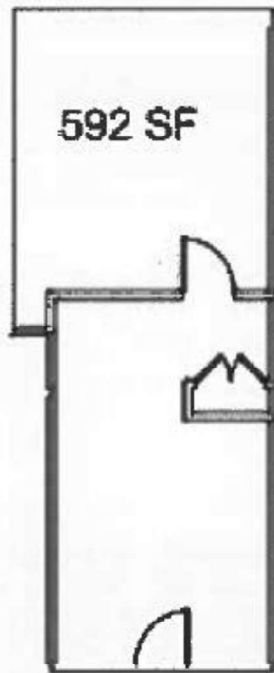
Email: [eric@ga-re.com](mailto:eric@ga-re.com)

All information furnished regarding property for sale, rental or financing is from sources deemed reliable; but no warranty or representation is made to the accuracy thereof and same is submitted subject to errors, omissions, changes of price, rental or other conditions prior sales, lease or withdrawal without notice.

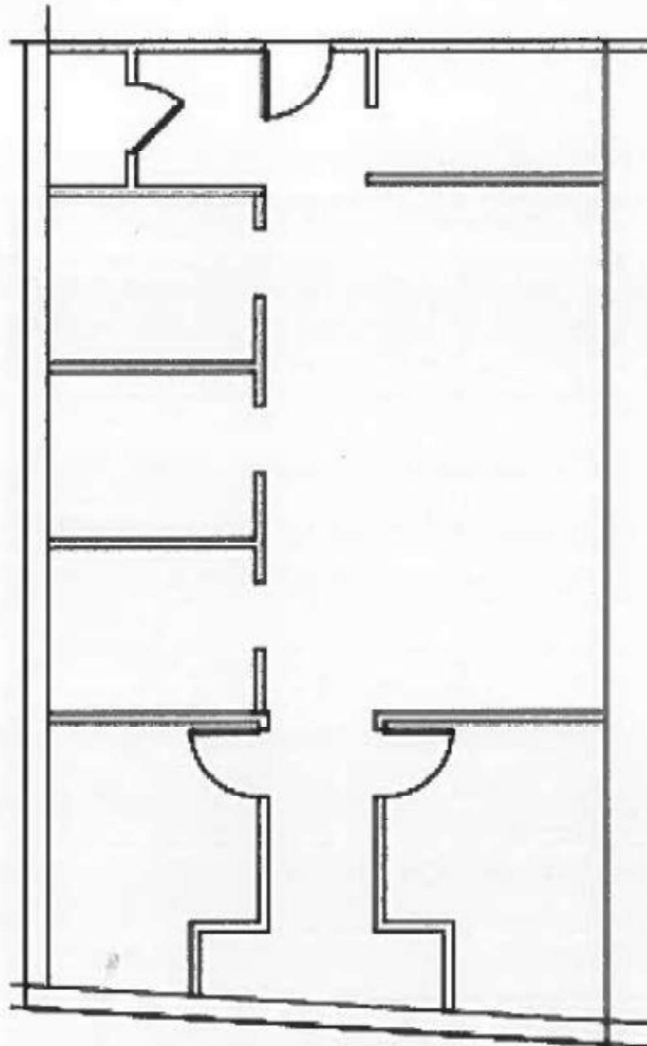
## 1941 Palmer Avenue Larchmont, NY

SUITE 207

592 SF



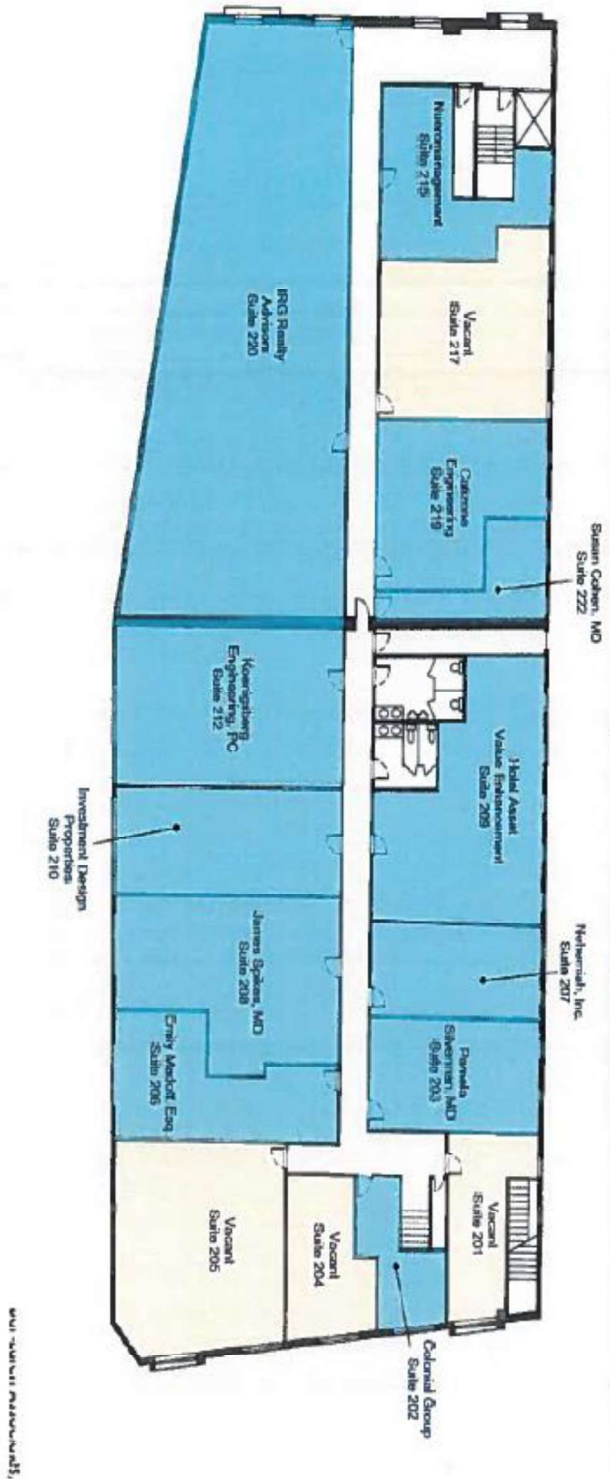
1941 Palmer Avenue Larchmont, NY



SUITE 212

# 1941 Palmer Avenue Larchmont, NY

## One West Avenue, Larchmont, NY Second Floor Office Floor Plan





## 1941 Palmer Avenue Larchmont, NY

