

0.92 ACRES AVAILABLE FOR GROUND LEASE OR SALE

RETAIL LAND OPPORTUNITY



3228 WESTERN BRANCH BLVD
CHESAPEAKE, VA 23321

Zoned B-2



THALHIMER

3228 WESTERN BRANCH BLVD

PROPERTY HIGHLIGHTS



- 0.92 Acres with access on Western Branch Blvd
- Zoned B-2 (General Business District)
- Centrally located in the heart of the Churchland Submarket
- Minutes from the Monitor Merrimac Bridge Tunnel, Portsmouth, Norfolk, and Harbour View
- Available for lease or sale
- Call Agent for Pricing



69,444
POPULATION
Within 3 Miles



\$82,768
AVG. INCOME
Within 3 Miles

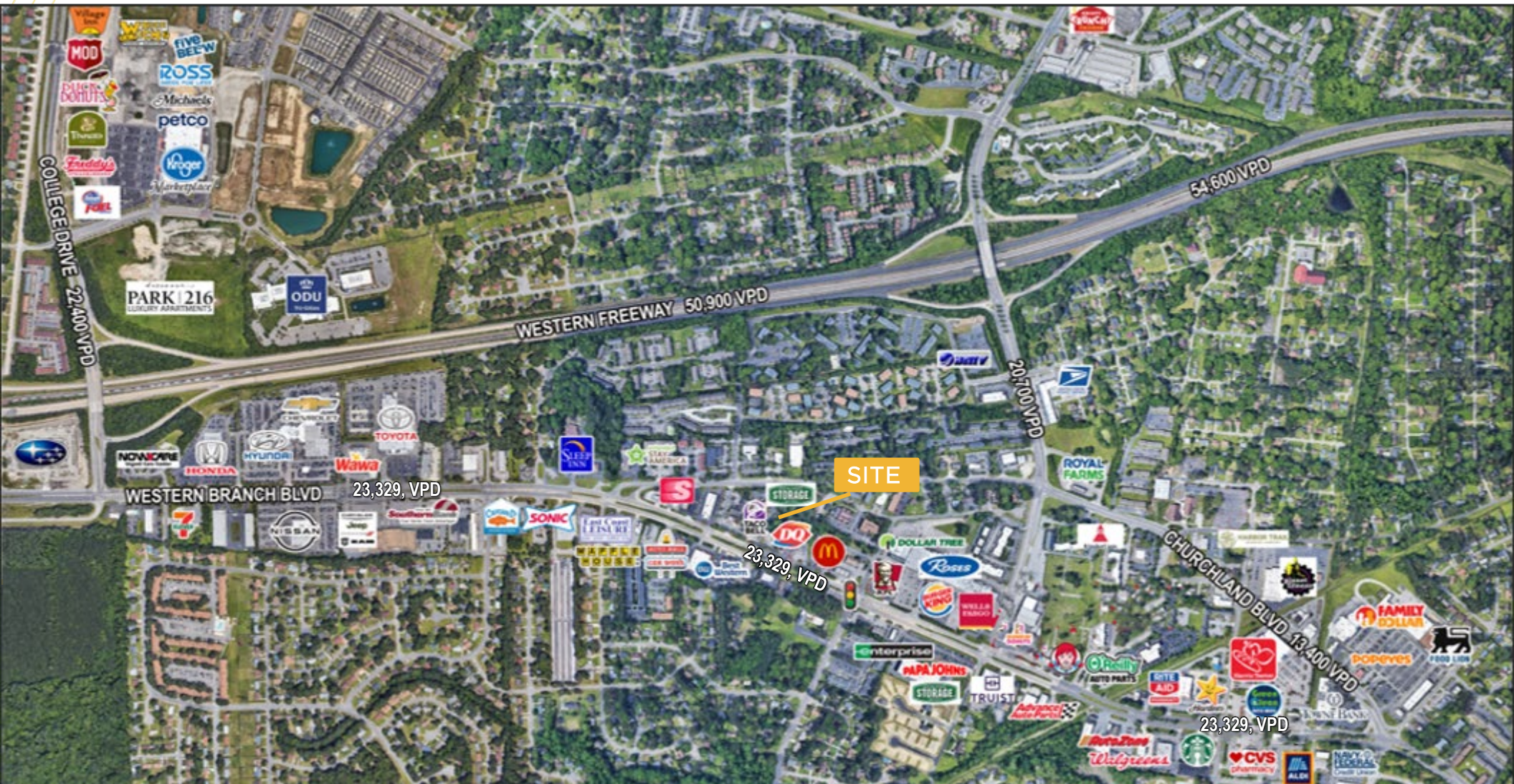


\$337,820
AVG. HOME VALUE
Within 3 Miles



38.3
AVG. AGE
Within 3 Miles

A DRIVING WORKFORCE



CLAY WILLIS
Associate
757 213 4143
clay.willis@thalhimer.com

ALEX WOTRING
Senior Vice President
804 344 7163
alex.wotring@thalhimer.com



Independently Owned and Operated / A Member of the Cushman & Wakefield Alliance

Cushman & Wakefield | Thalhimer © 2025. No warranty or representation, express or implied, is made to the accuracy or completeness of the information contained herein, and same is submitted subject to errors, omissions, change of price, rental or other conditions, withdrawal without notice, and to any special listing conditions imposed by the property owner(s). As applicable, we make no representation as to the condition of the property (or properties) in question.