

251-01 JAMAICA AVENUE

150 FEET OF FRONTAGE ON JAMAICA AVENUE | BELLEROSE



251-01 JAMAICA AVENUE

150 FEET OF FRONTAGE ON JAMAICA AVENUE | BELLEROSE

PROPERTY HIGHLIGHTS

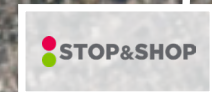
- High visibility frontage along Jericho Tpke
- 146 on-site, parking spaces
- High vehicle traffic area in dense residential neighborhood
- Easily accessible via Cross Island Parkway
- Neighboring tenants include: 7-11, Starbucks, Subway, Dollar Tree, Jiffy Lube, Foodtown, T-Mobile, CVS, Speedway, Mavis Discount Tire, Advance Auto Parts, Verizon, U-Haul, Cubesmart Storage

SIZE: 20,600 SF Ground Floor

FRONTAGE: 150'

POSSESSION: Immediate

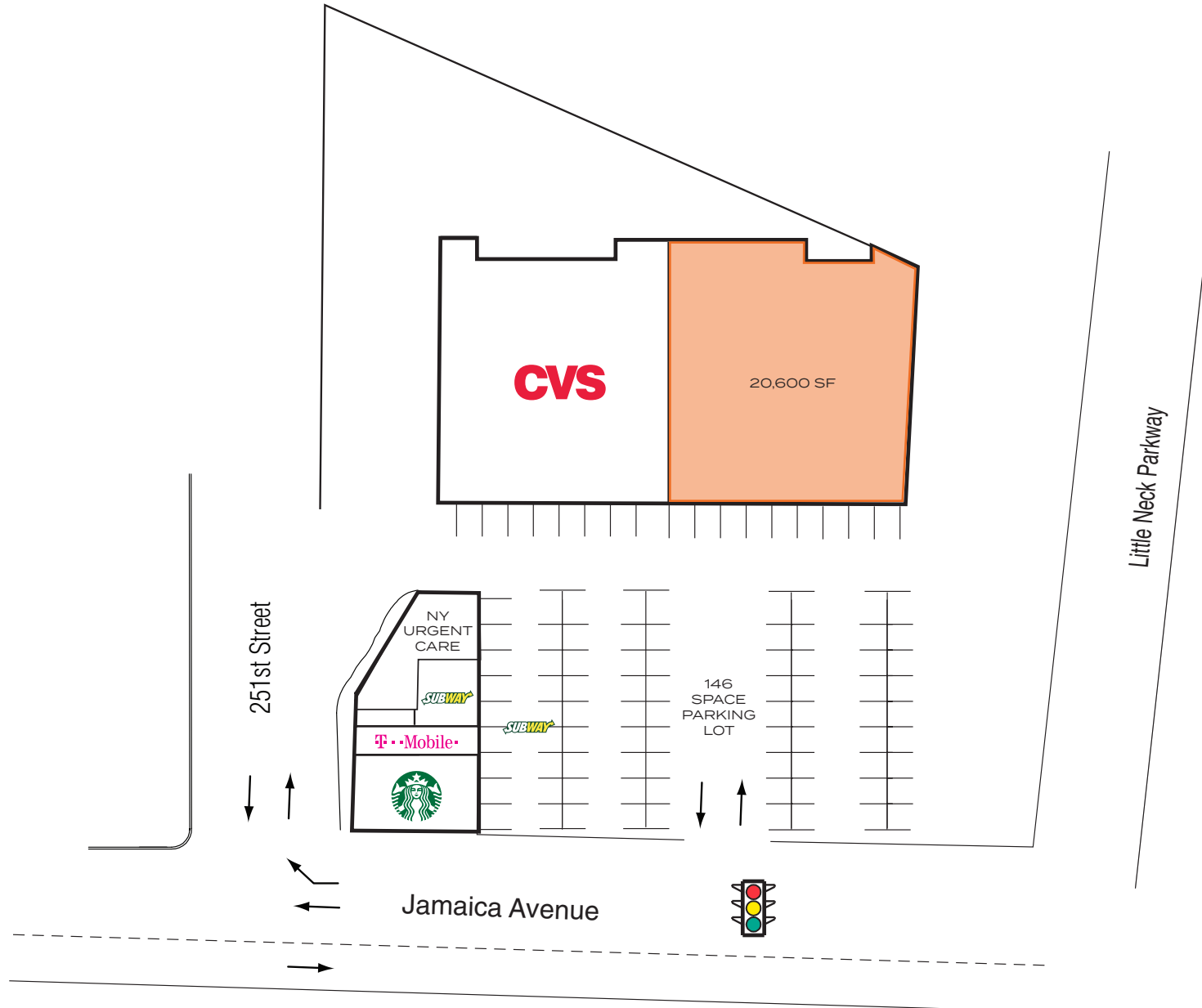
ASKING RENT: Upon Request



251-01 JAMAICA AVENUE

150 FEET OF FRONTAGE ON JAMAICA AVENUE | BELLEROSE

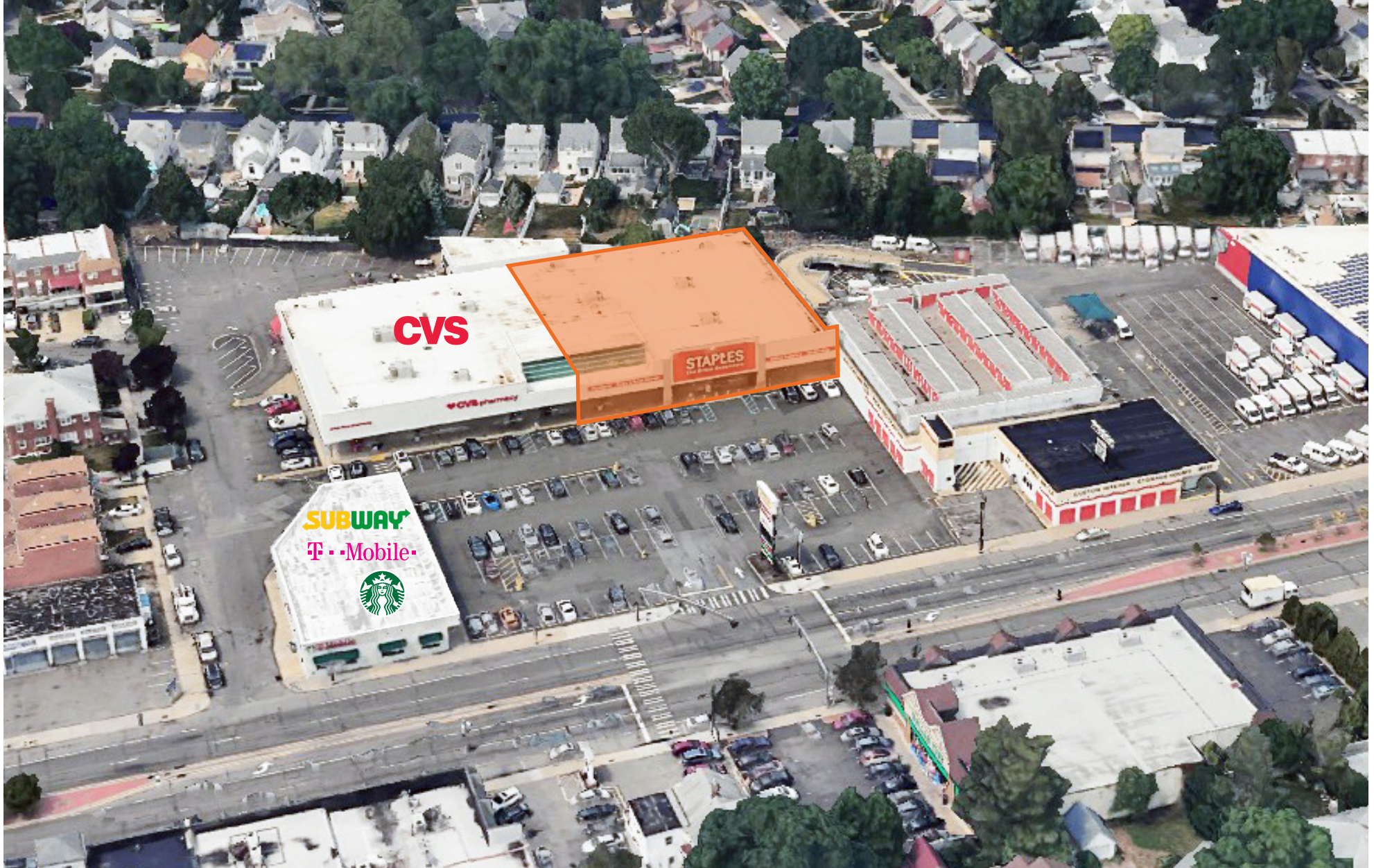
SITE PLAN:



251-01 JAMAICA AVENUE

150 FEET OF FRONTAGE ON JAMAICA AVENUE | BELLEROSE

AERIAL VIEW:



All information supplied in this marketing presentation and/or flyer is from sources deemed reliable and is furnished subject to errors, omissions, modifications, removal of listings from sale/lease and to any listing condition. Any square footage, dimensions, floor plans and/or technical data set forth are approximations and are subject to further elaboration/confirmation.

251-01 JAMAICA AVENUE

150 FEET OF FRONTAGE ON JAMAICA AVENUE | BELLEROSE

FOR MORE INFORMATION,
PLEASE CONTACT:

MARK GALLUCCI

718.551.5387 | MGallucci@ksrny.com

GEORGE SKALIARINIS

917.991.1539 | GeorgeS@ksrny.com

