

17354 Teunis Drive
Spring Lake, Michigan



Industrial Space For Lease

- 18,000 Square Foot Building
 - **9,000 SF Available (1,000 SF of office)**
- Zoned Industrial
- Year Built: 1985
- 16' - 18' Eave Height
- Covered Loading Dock with Leveler
- 2 Overhead Doors
- 480V | 3-Phase Power
- Fire Suppression
- **Lease Price: \$4.75/SF/Yr NNN**



For more information, please contact:

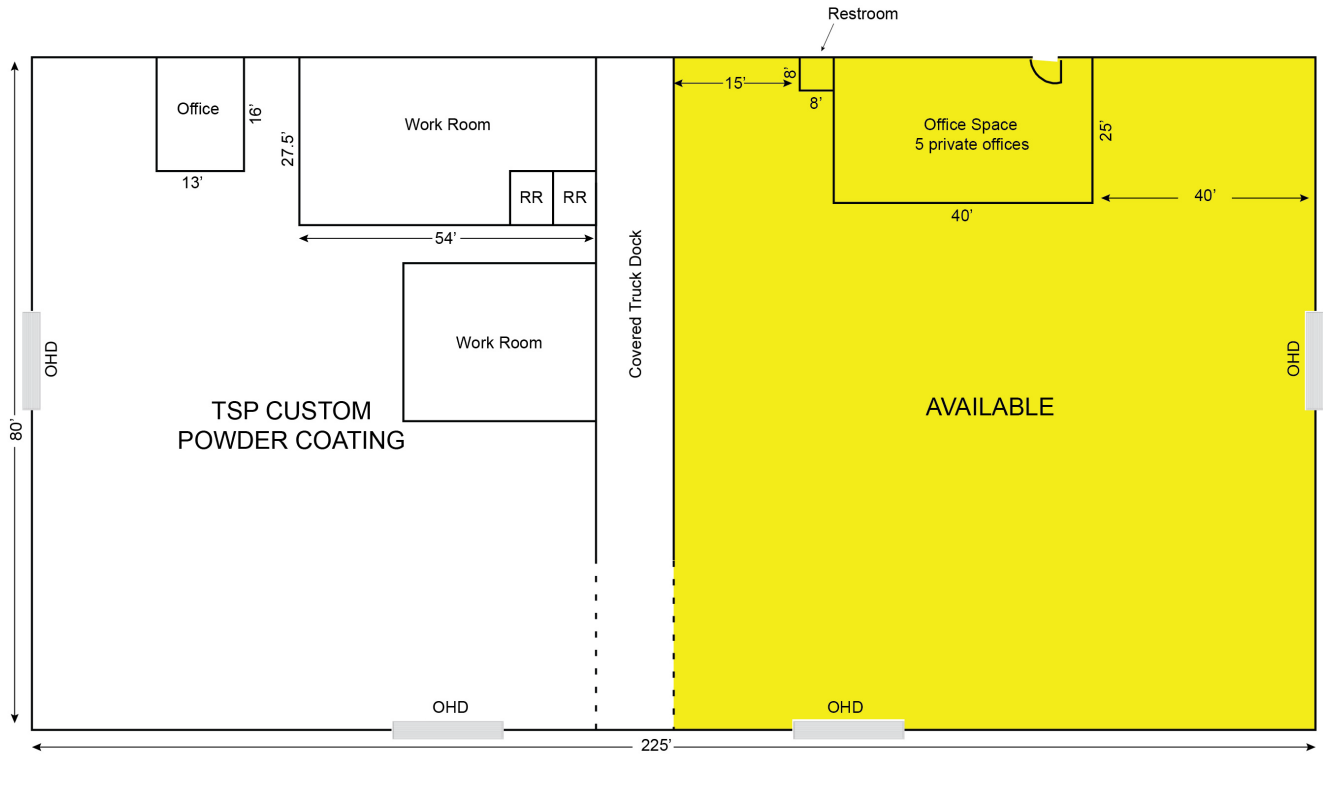
BRYAN BENCH
231 578 2508
bryanbench@corerealty.com

Connect with us:



CORE REALTY PARTNERS
700 Terrace Point Drive, Suite 200
Muskegon, MI 49440
www.corecommercialrealty.com

Floor Plan



*Dimensions are approximate and will require field verification.

For more information, please contact:

BRYAN BENCH
231 578 2508
bryanbench@corealty.com

Connect with us:



CORE REALTY PARTNERS
700 Terrace Point Drive, Suite 200
Muskegon, MI 49440
www.corecommercialrealty.com

Photos



For more information, please contact:

BRYAN BENCH
231 578 2508
bryanbench@corealty.com

Connect with us:

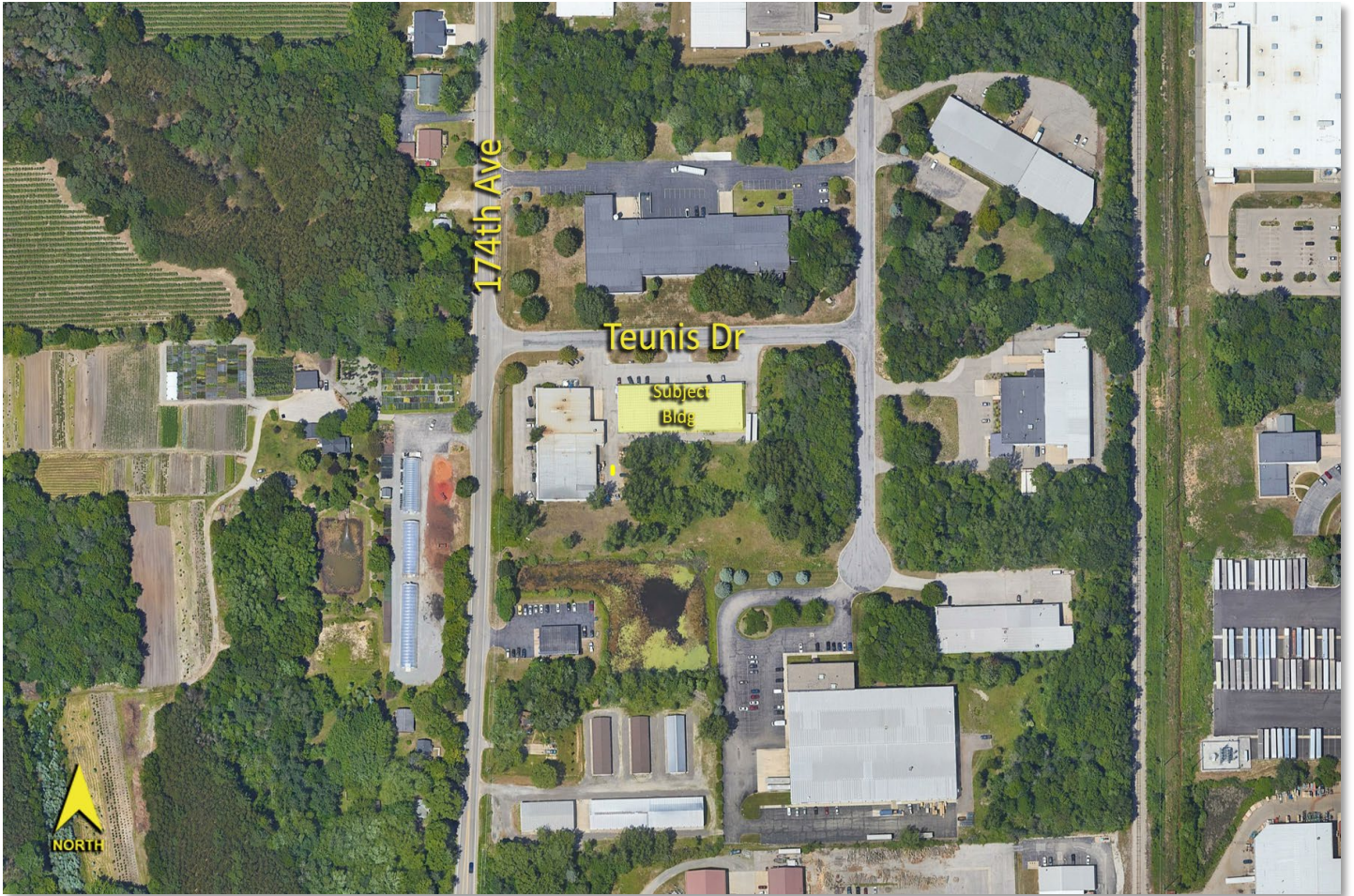


CORE REALTY PARTNERS
700 Terrace Point Drive, Suite 200
Muskegon, MI 49440
www.corecommercialrealty.com

17354 Teunis Drive
Spring Lake, Michigan

For Lease

Aerial



For more information, please contact:

BRYAN BENCH
231 578 2508
bryanbench@corealty.com

Connect with us:



CORE REALTY PARTNERS
700 Terrace Point Drive, Suite 200
Muskegon, MI 49440
www.corecommercialrealty.com

Information is subject to verification and no liability for errors or omissions is assumed. Price is subject to change and listing withdrawal.