

# SPECTRUM PROPERTIES

Commercial Real Estate Services

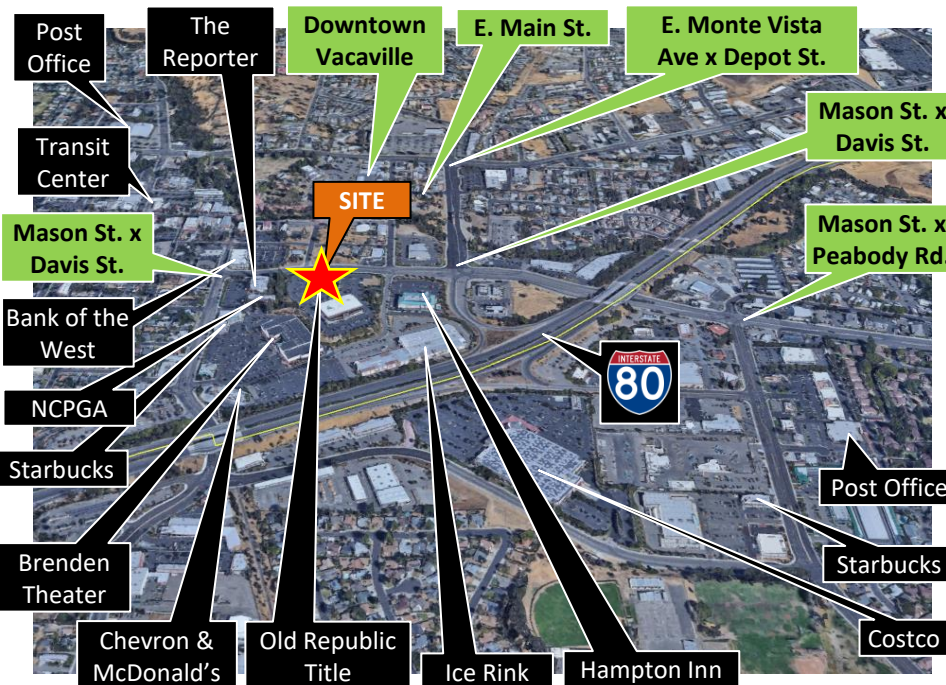
Spectrum Properties  
Commercial Real Estate Services  
(707) 359-2950  
[www.SpectrumPropertiesRE.com](http://www.SpectrumPropertiesRE.com)  
CA DRE # 01860534

## FURNISHED CLASS A SUBLEASE IN VACAVILLE, CA



**790 Mason St. – Vacaville CA** is a new construction Class A office building with beautiful views and professional office tenant mix. Sublease offered is in a furnished mortgage office. Some restrictions apply. Sorry, no real estate, title/escrow, mortgage, or counseling users.

**SUBJECT PROPERTY** is a marquee location at I-80 WB on- and off-ramps. Located on a prominent, signalized intersection near the Downtown District. Nearby amenities include lodging, food, entertainment and transportation.



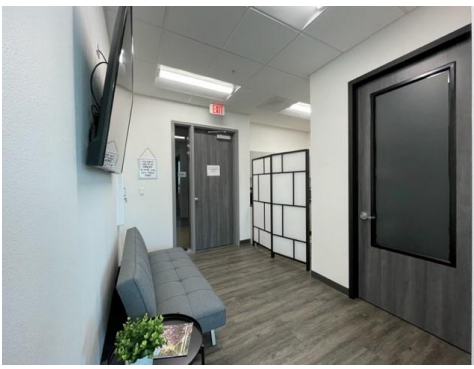
PROPERTY FEATURES	
<b>Building Size</b>	11,832 sf
<b>Features</b>	<ul style="list-style-type: none"> <li>• Close to Downtown</li> <li>• Easy Access to I-80</li> <li>• Signage / Parking</li> </ul>
<b>Suite 202-A</b> 991 sf	\$2.00/sf Mod FS 3 privates, 3 cubes, storage and break area
<b>Suite 202-B</b> 1,982 sf	\$2.25/sf Mod FS Reception, 5 privates, 4 cubes, open area

**FOR MORE INFORMATION  
PLEASE CALL 707- 359-2950**

**Spectrum Properties  
Commercial Real Estate Services**

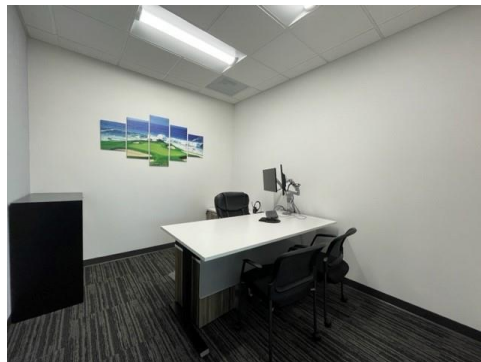
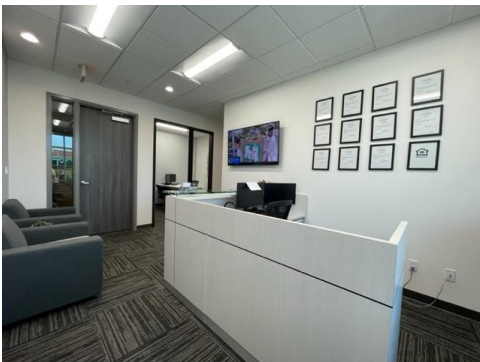
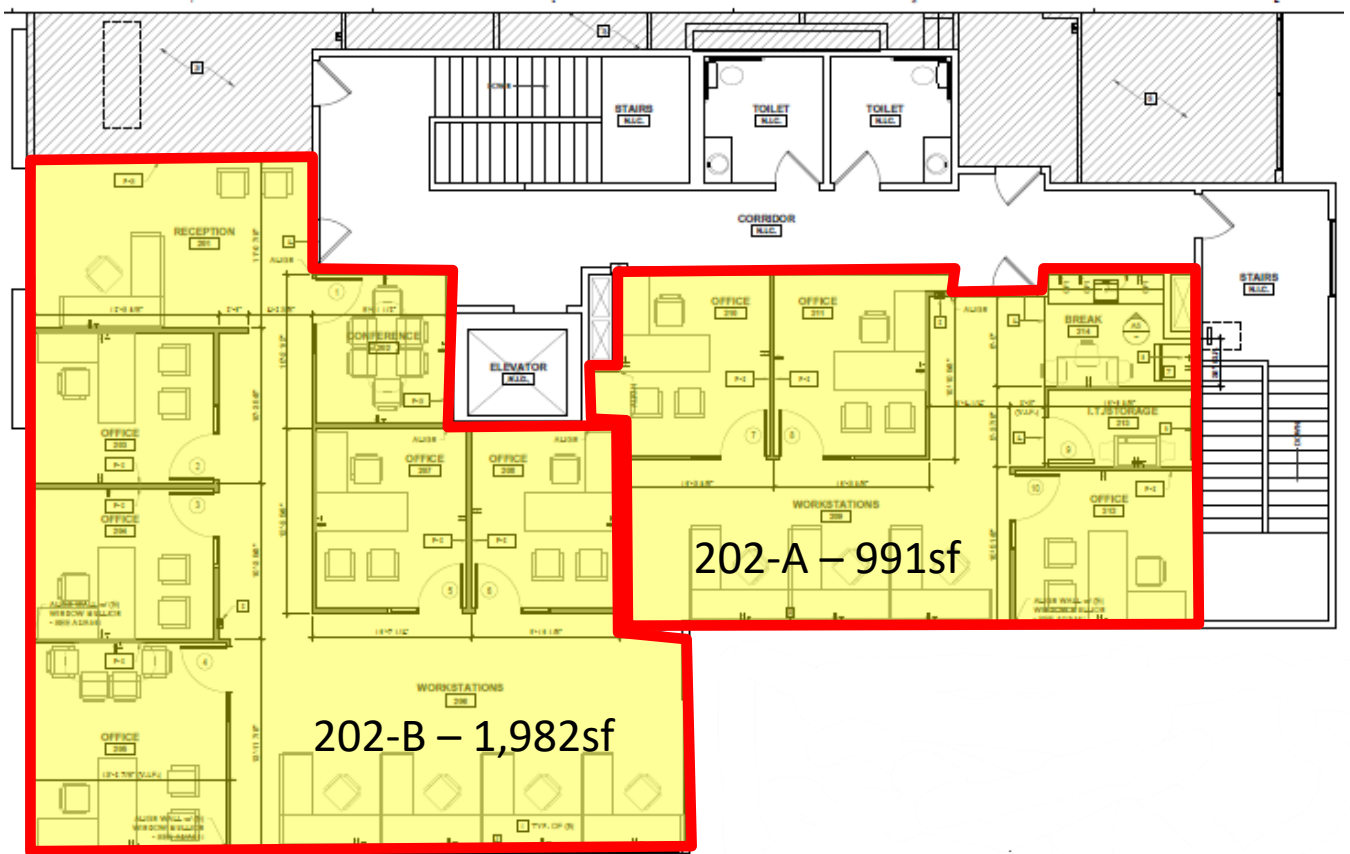
**785 Alamo Dr. Ste 170  
Vacaville, CA 95688  
[www.SpectrumPropertiesRE.com](http://www.SpectrumPropertiesRE.com)**

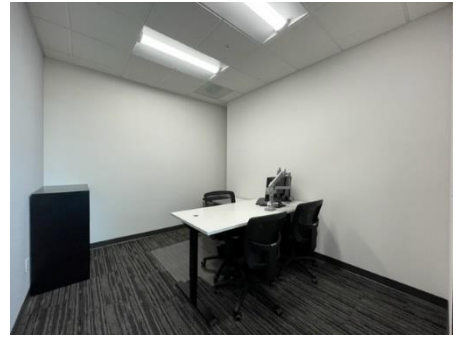
The depiction in the included photograph of any person, entity sign, logo, or property other than Spectrum Properties (S.P) client, and the property offered by S.P, is included only, and it not intended to connote any affiliation, connection, association, sponsorship or approval, by or between that which is incidentally depicted and S.P or it's clients. This listing shall not be deemed an offer to lease, sublease or sell such property; and, in the event of any transaction for such property, no commission shall be earned by or payable to any cooperating broker expect if otherwise provided pursuant to the express terms, rates and conditions of S.P agreement with it's principal, if, as and when such commission (if any) is actually received form such principal.



790 Mason St.  
Ste. 202  
Vacaville CA

202-A - 991sf OFFERED FOR LEASE BY  
202-B - 1,982sf **SPECTRUM PROPERTIES**





## Site Map

790 Mason St.  
Vacaville CA

Mason St.

