

OWNED BY

**Camber
Real Estate
Partners**

32,323
SQUARE FEET
WAREHOUSE
/ FLEX
FOR LEASE

IDEAL
LOCATION
JUST OFF I-295
AT EXIT 20

LOCATED IN
MID-ATLANTIC
CORPORATE
CENTER



AVAILABLE FOR LEASE

1707-1709 IMPERIAL WAY

WEST DEPTFORD, NJ

Scott Mertz, SIOR
+1 856 802 6529
scott.mertz@naimertz.com

NAI Mertz
21 Roland Avenue | Mount Laurel, NJ 08054
+1 856 234 9600 | naimertz.com

How & Where May We Help You?

NAI Mertz
COMMERCIAL REAL ESTATE SERVICES, WORLDWIDE

AVAILABLE FOR LEASE

1707-1709 IMPERIAL WAY

WEST DEPTFORD, NJ

CURRENT AVAILABILITIES

UNIT 1709

- 32,323 SF unit
 - 29,593 SF warehouse
 - 2,730 SF office area
- Loading:
 - (1) 12' x 12.5' drive-in, electrically operated
 - (3) 8.4' x 10' tailgates (2 w/ interior levelers, 1 w/ exterior levels)
 - (1) 8' x 10' tailgate
 - (1) 8' x 10' box truck
- 36' x 36' column spacing
- Power: 800a, 400-277v, 3P, 4w
- T-5 & T-8 motion sensor lighting
- Paddle fans
- 4 restrooms (1 mens, 1 womens, 2 private)

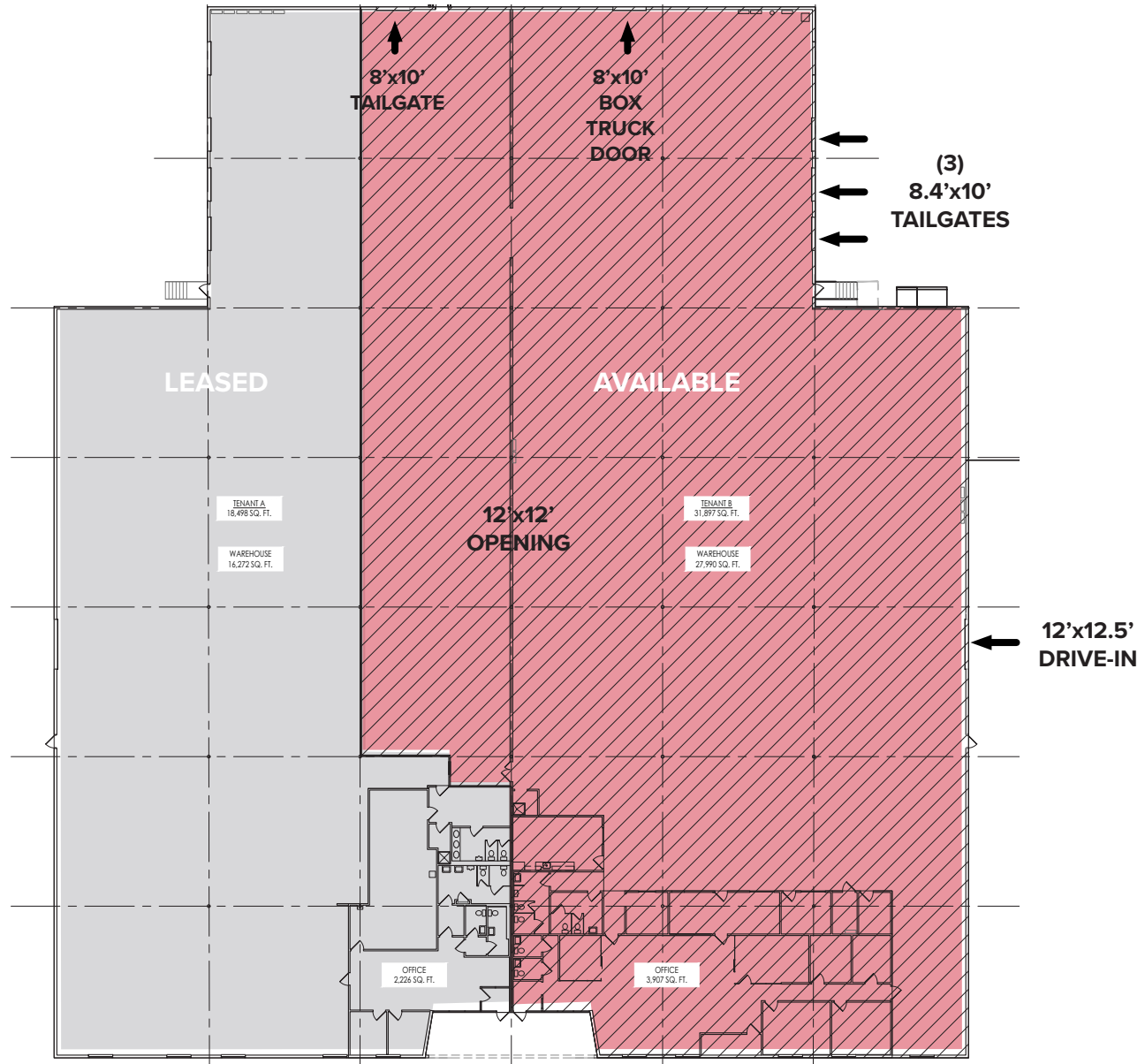
BUILDING DESCRIPTION

- 51,000 SF multi-tenanted, industrial / flex building
- 6.44 acre lot
- Tailgate loading
- 21'± clear ceiling height
- Located in Mid-Atlantic Corporate Center
- Just off I-295 (Exit 20)



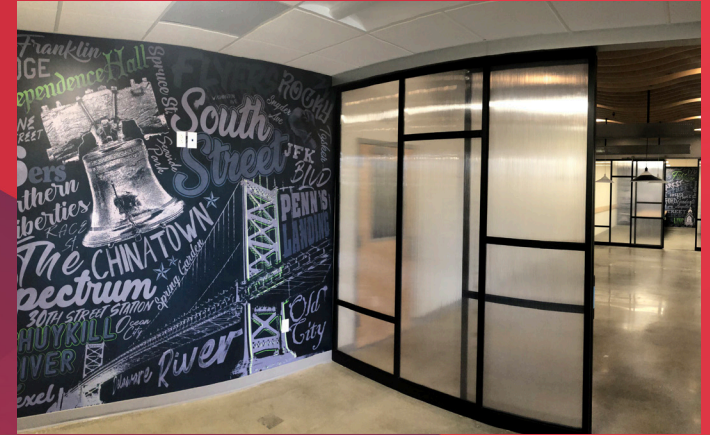
FLOORPLAN

AVAILABLE FOR LEASE
1707-1709 IMPERIAL WAY
WEST DEPTFORD, NJ

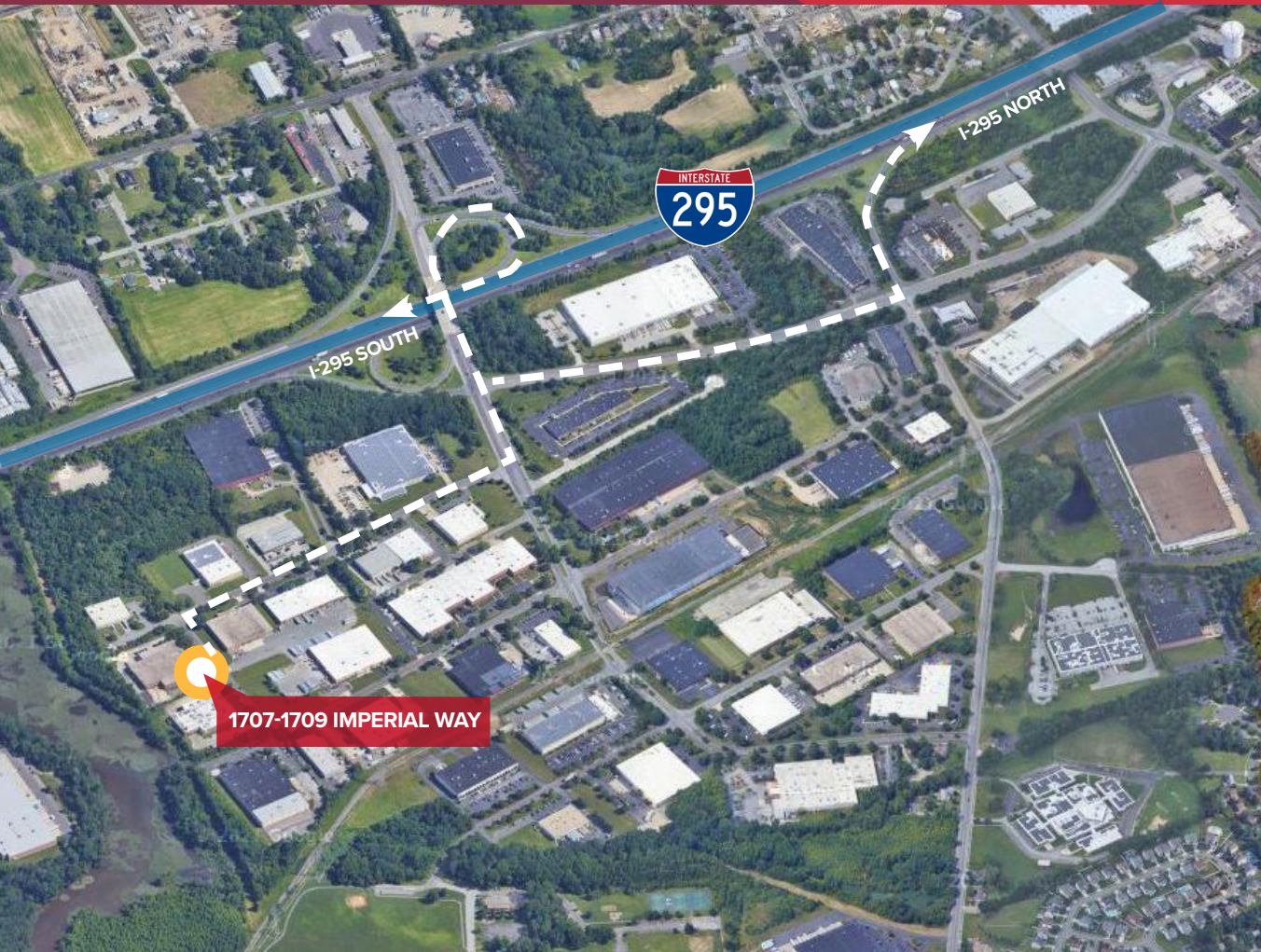


INTERIOR PHOTOS

AVAILABLE FOR LEASE
1707-1709 IMPERIAL WAY
WEST DEPTFORD, NJ



LOCATION INFORMATION



AVAILABLE FOR LEASE 1707-1709 IMPERIAL WAY

WEST DEPTFORD, NJ

Distance from

I-295 (Exit 20 S)	0.5 mi
I-295 (Exit 20 N)	1.0 mi
Route 55	6.5 mi
NJ Turnpike (Exit 3)	8.5 mi
Walt Whitman Bridge	9.2 mi
Commodore Barry Bridge	10.7 mi
I-95	11.5 mi
Center City Philadelphia	14.5 mi
Philadelphia Int'l Airport	16.5 mi

OWNED BY

**Camber
Real Estate
Partners**

Scott Mertz, SIOR

+1 856 802 6529

scott.mertz@naimertz.com

NAI Mertz

21 Roland Avenue | Mount Laurel, NJ 08054

+1 856 234 9600 | naimertz.com

NO WARRANTY OR REPRESENTATION, EXPRESS OR IMPLIED, IS MADE AS TO THE ACCURACY OF THE INFORMATION CONTAINED HEREIN, AND THE SAME IS SUBMITTED SUBJECT TO ERRORS, OMISSIONS, CHANGE OF PRICE, RENTAL OR OTHER CONDITIONS, PRIOR SALE, LEASE OR FINANCING, OR WITHDRAWAL WITHOUT NOTICE, AND OF ANY SPECIAL LISTING CONDITIONS IMPOSED BY OUR PRINCIPALS NO WARRANTIES OR REPRESENTATIONS ARE MADE AS TO THE CONDITION OF THE PROPERTY OR ANY HAZARDS CONTAINED THEREIN ARE ANY TO BE IMPLIED.

NAI Mertz

COMMERCIAL REAL ESTATE SERVICES, WORLDWIDE