

# Southpointe Office Park

8849 Shelby St | 8936, 8937, 8921, & 8851 Southpointe Dr | 1030 E. County Line Rd  
Indianapolis, IN 46227

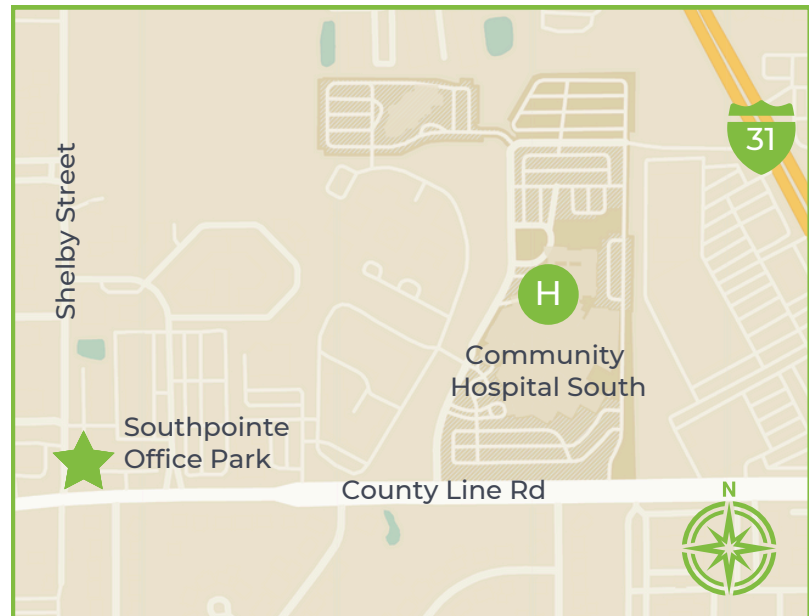
For Lease



## LOCATION DESCRIPTION

Southpointe Office Park is comprised of 6 garden style office buildings on Indy's south side. This convenient location is a mere half-mile from Community Hospital South and only 20 minutes from Downtown's Central Business District.

The last remaining availability in the park is located in the Southpointe V building [8921 Southpointe Drive]. The space is 6,159 SF and fully built out as medical office.



## LEASING INFORMATION

Drew Deffner  
Executive Vice President  
Drew@alopg.com  
C: 317.376.3897

Lora Moore  
Executive Managing Director  
Lora@alopg.com  
C: 765.918.4999

ALO Property Group  
9075 N Meridian St., Ste. 175  
Indianapolis, IN 46260  
O: 317.853.7500





# Southpointe Office Park

8849 Shelby St | 8936, 8937, 8921, & 8851 Southpointe Dr | 1030 E. County Line Rd  
Indianapolis, IN 46227

For Lease



## PROPERTY INFORMATION

- 75,984 SF Medical/Office Park
- 6,159 SF Available in Southpointe V
- Private Entrances Allow for Easy Entry and At-the-Door Parking for Patients.
- 4.10/1,000 Parking Ratio
- Building Signage Opportunity

## DEMOGRAPHIC DETAILS

- Within a five-mile radius, \$118,748,766 was spent on health care last year alone.
- The market boasts a growing population of 189,170 within a five-mile radius.
- Large employee base with 18.6% of workers in the health care and social assistance sector.

## KEY TENANTS



## LEASING INFORMATION

Drew Deffner  
Executive Vice President  
Drew@alopg.com  
C: 317.376.3897

Lora Moore  
Executive Managing Director  
Lora@alopg.com  
C: 765.918.4999

ALO Property Group  
9075 N Meridian St., Ste. 175  
Indianapolis, IN 46260  
O: 317.853.7500

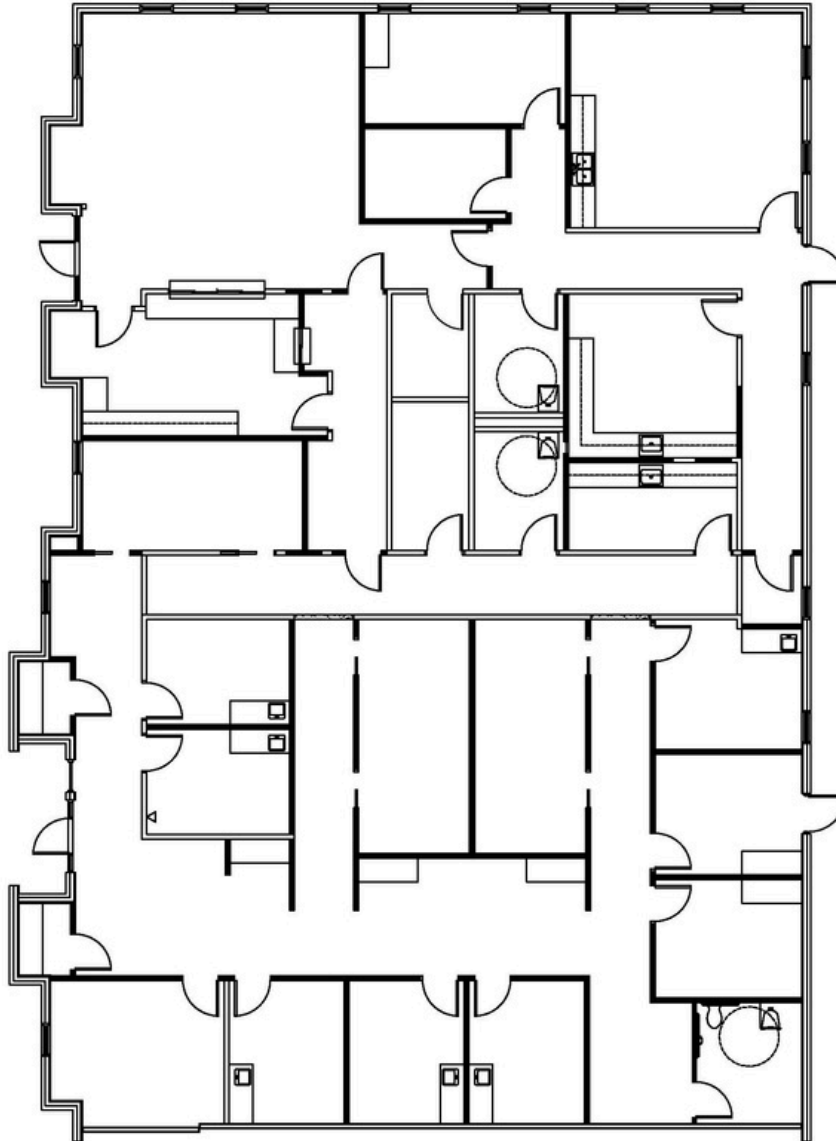


# Southpointe Office Park

8849 Shelby St | 8936, 8937, 8921, & 8851 Southpointe Dr | 1030 E. County Line Rd  
Indianapolis, IN 46227

For Lease

## 8921 Southpointe Drive [Southpointe V - 6,159 SF]



### LEASING INFORMATION

Drew Deffner  
Executive Vice President  
Drew@alopg.com  
C: 317.376.3897

Lora Moore  
Executive Managing Director  
Lora@alopg.com  
C: 765.918.4999

ALO Property Group  
9075 N Meridian St., Ste. 175  
Indianapolis, IN 46260  
O: 317.853.7500

