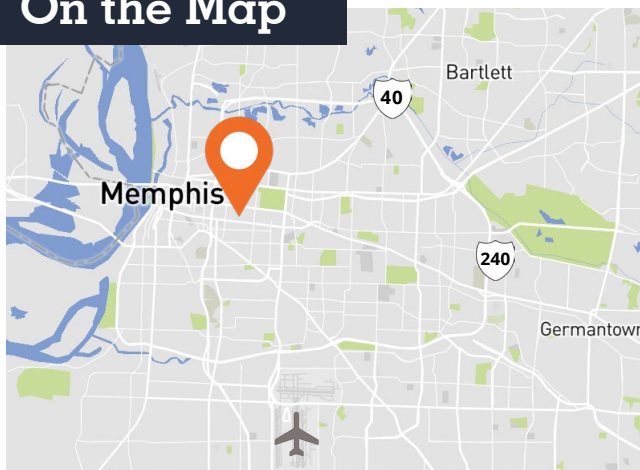




On the Map



Property highlights

- Office space available from 980 sf to 38,285 sf in landmark building on Union Avenue
- Full floor availability on the ground floor, including motorcourt, approximately 40,000 sf
- Secured covered parking available
- Building naming rights, electronic billboard availability and signage available
- Ideal location for medical users due to its proximity to Methodist Hospital, Southern College of Optometry, and the Medical District in Midtown
- Excellent access to nearby shopping and restaurants on Union and Madison Avenues

For more information, please contact:

Justin Syputl, Vice President

D 901 231 1403

C 901 497 7958

justin.sypult@avisonyoung.com

Michael Donahoe, Senior Vice President

D 901 231 1402

C 901 230 0601

michael.donahoe@avisonyoung.com

5350 Poplar Avenue, Suite 205

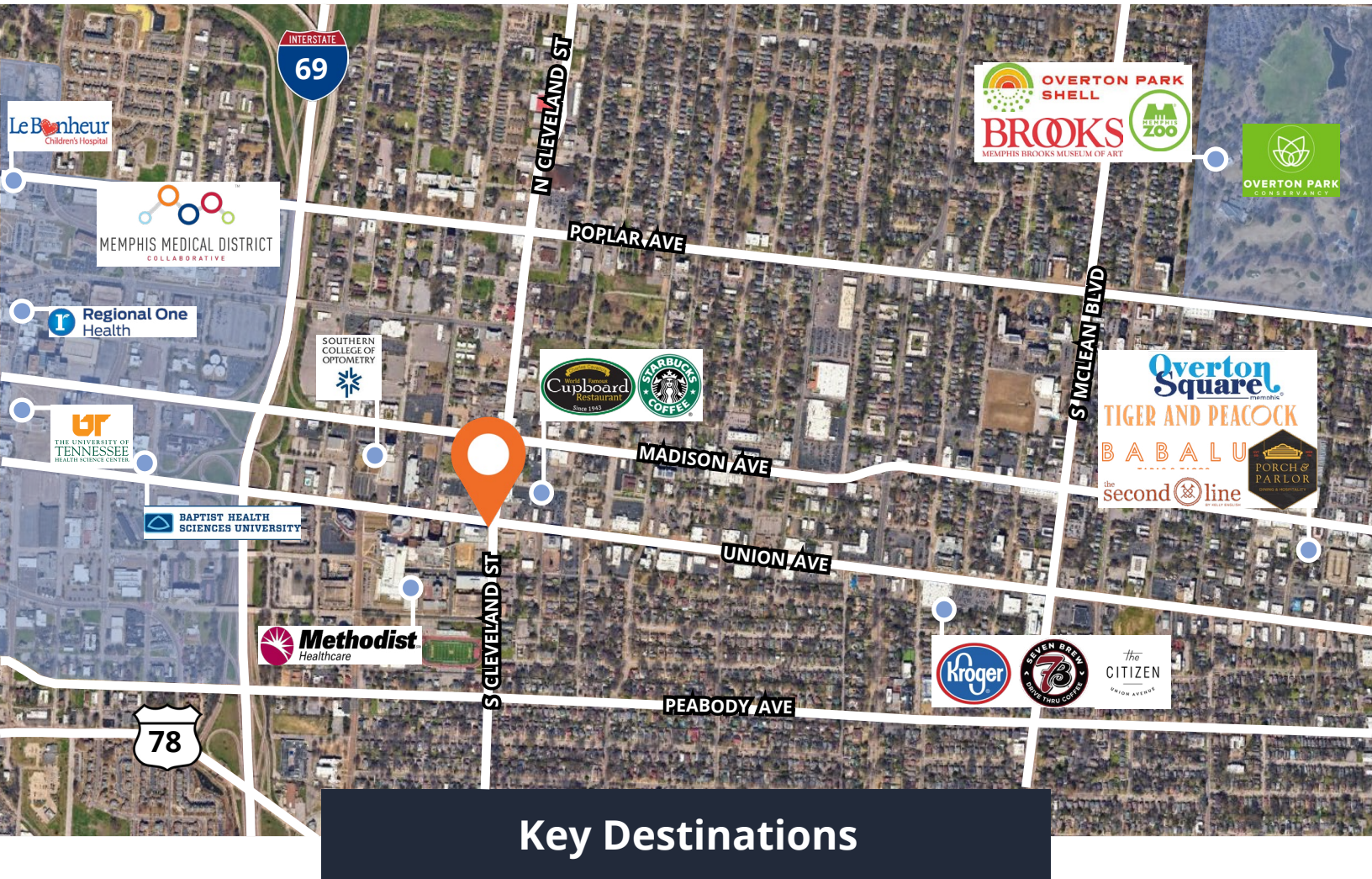
Memphis, TN 38119

901 231 1400



Justin Sypult, Vice President
D 901 231 1403
C 901 497 7958
justin.sypult@avisonyoung.com

Michael Donahoe, Senior Vice President
D 901 231 1402
C 901 230 0601
michael.donahoe@avisonyoung.com



I-240

0.4 mi / 1 min



I-55

7.0 mi / 8 min



I-40

1.3 mi / 3 min



Memphis Medical District

1.1 mi / 3 min



Memphis International Airport

10.0 mi / 15 min



Downtown Memphis

2.1 mi / 6 min



Overton Square

1.6 mi / 5 min

**AVISON
YOUNG**

Justin Syputl, Vice President
D 901 231 1403
C 901 497 7958
justin.sypult@avisonyoung.com

Michael Donahoe, Senior Vice President
D 901 231 1402
C 901 230 0601
michael.donahoe@avisonyoung.com