

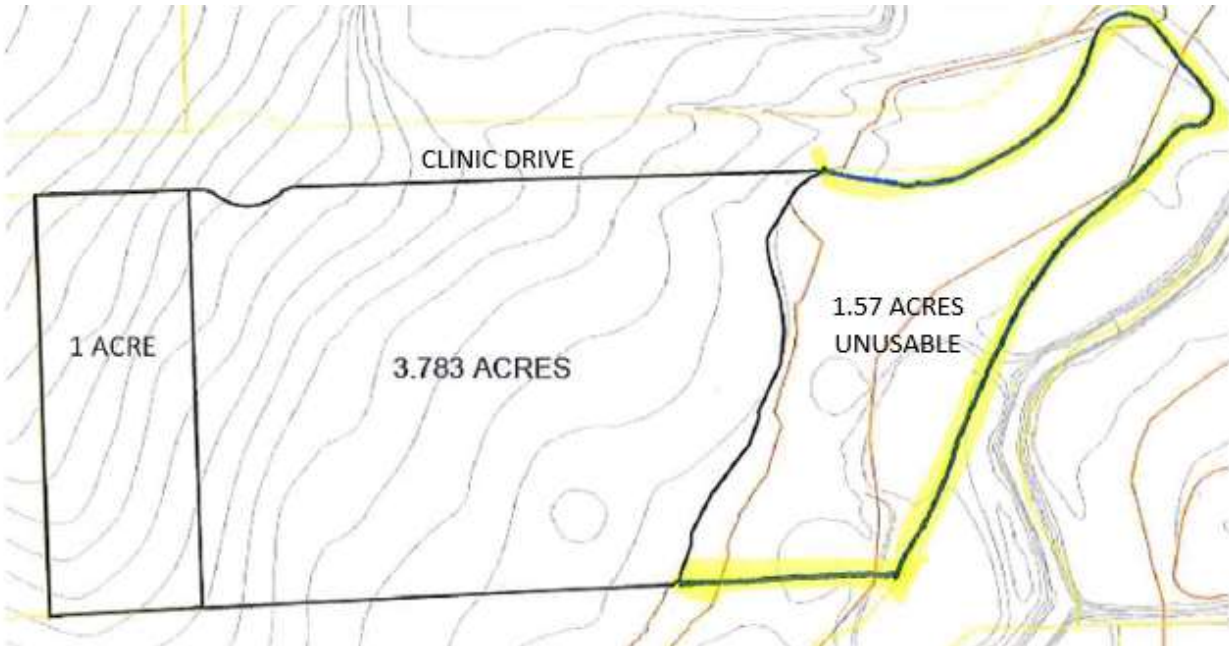


## Property Information

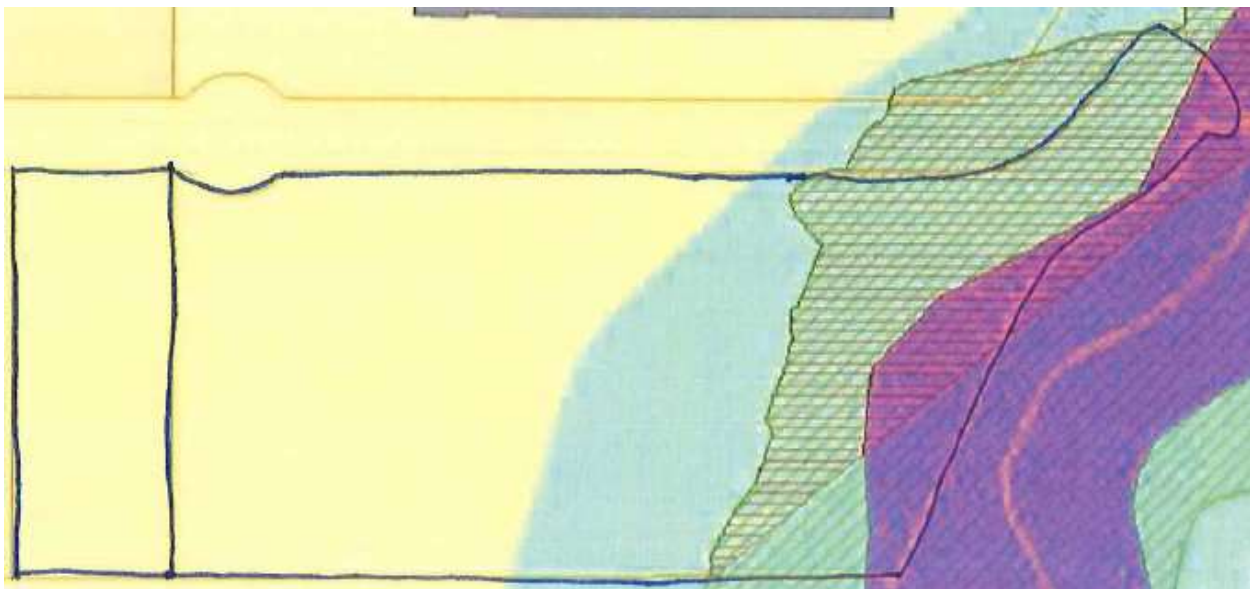
<b>Location:</b>	SW Corner of N. Fourth St. and Clinic Dr.
<b>Available Land:</b>	Approximately 6.35 Total Acres; 4.78 Usable Acres
<b>Sales Price:</b>	\$1,050,000.00
<b>Description:</b>	Prime location north of Longview Regional Hospital and south of Loop 281. Great opportunity for development.

*For more information:*  
**Walter R. Northcutt**  
**(903) 753-2191**  
[wnorthcutt@beerwellseasttexas.com](mailto:wnorthcutt@beerwellseasttexas.com)

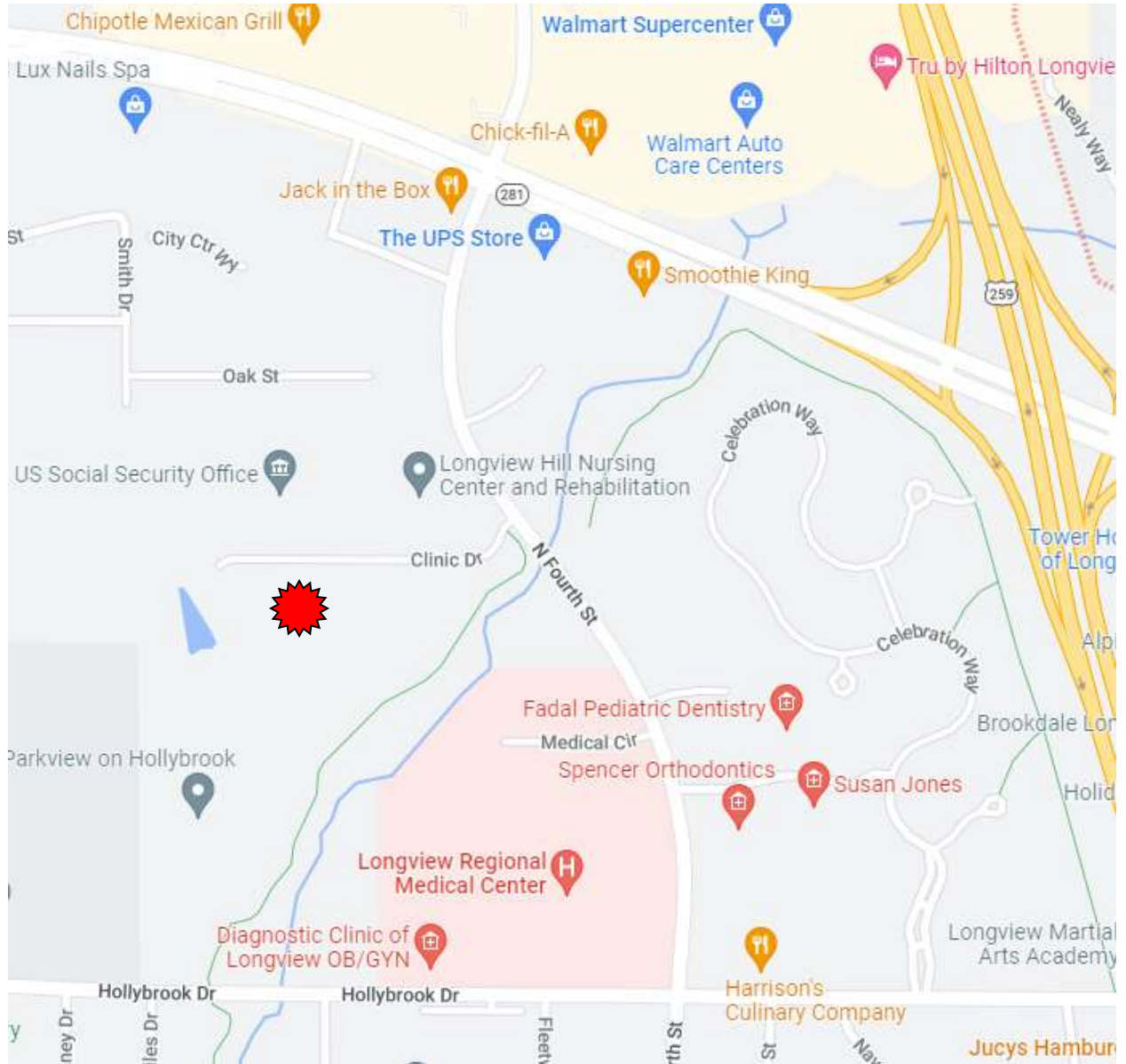
## PLAT



## FLOOD MAP



# MAP



## AERIAL



# ZONING

